



**USER MANUAL UMAX103000**  
**Version 1.0.3**

# **3 Universal Inputs, 2 HSLs Proportional Outputs, CAN Controller**

## **USER MANUAL**

**P/N: AX103000**

## VERSION HISTORY

<b>Version</b>	<b>Date</b>	<b>Author</b>	<b>Modification</b>
1.0.0	Feb., 2023	Dmytro Tsebrii	Initial Draft Apr, 2023: <ul style="list-style-type: none"><li>• Added examples for Math, Diagnostic, Conditional Logic, LUT, and PLB function blocks.</li></ul> May, 2023: <ul style="list-style-type: none"><li>• Added PID Function Block</li><li>• Added H-Bridge Function Block</li></ul>
1.0.1	Aug., 2023	M Ejaz	Fixed legacy issues
1.0.2	Jan., 2024	M Ejaz	Updated technical specifications Updated block diagram Added dimensional drawing Updated pin out table
1.0.3	Feb., 2024	M Ejaz	Updated dimensional drawing Added weight Removed 8A input comment

## ACRONYMS

ACK	Positive Acknowledgement (from SAE J1939 standard)
BATT +/-	Battery positive (a.k.a. Vps) or Battery Negative (a.k.a. GND)
DIN	Digital Input used to measure active high or low signals
DM	Diagnostic Message (from SAE J1939 standard)
DTC	Diagnostic Trouble Code (from SAE J1939 standard)
EA	Axiomatic Electronic Assistant (A Service Tool for Axiomatic ECUs)
ECU	Electronic Control Unit (from SAE J1939 standard)
GND	Ground reference (a.k.a. BATT-)
I/O	Inputs and Outputs
MAP	Memory Access Protocol
NAK	Negative Acknowledgement (from SAE J1939 standard)
PDU1	A format for messages that are to be sent to a destination address, either specific or global (from SAE J1939 standard)
PDU2	A format used to send information that has been labeled using the Group Extension technique, and does not contain a destination address.
PGN	Parameter Group Number (from SAE J1939 standard)
PropA	Message that uses the Proprietary A PGN for peer-to-peer communication
PropB	Message that uses a Proprietary B PGN for broadcast communication
PWM	Pulse Width Modulation
RPM	Rotations per Minute
SPN	Suspect Parameter Number (from SAE J1939 standard)
TP	Transport Protocol
UIN	Universal input used to measure voltage, current, frequency or digital inputs
Vps	Voltage Power Supply (a.k.a. BATT+)
%dc	Percent Duty Cycle (Measured from a PWM input)

# TABLE OF CONTENTS

<b>1. OVERVIEW OF CONTROLLER</b> .....	<b>8</b>
1.1. Input Function Blocks .....	9
1.1.1. Universal Input .....	9
1.1.2. Voltage Measurements .....	11
1.1.3. Discrete Voltage Level .....	12
1.1.4. Frequency and PWM .....	12
1.1.5. Software Filtering .....	13
1.1.6. Special Conditions .....	14
1.2. Proportional Output Function Blocks .....	15
1.3. H-Bridge Function Block .....	19
1.4. PID Control Function Block .....	20
1.5. Diagnostic Function Blocks .....	21
1.6. Math Function Block .....	25
1.7. Conditional Block .....	27
1.8. Set / Reset Latch Function Block .....	29
1.9. Lookup Table Function Block .....	29
1.10. Programmable Logic Function Block .....	32
1.11. Constant Data .....	33
1.12. DTC React .....	34
1.13. CAN Transmit Message Function Block .....	34
1.13.1. CAN Transmit Message Setpoints .....	34
1.13.2. CAN Transmit Signal Setpoints .....	35
1.14. CAN Receive Function Block .....	35
1.15. Available Control Sources .....	36
1.16. Selectable Voltage Reference .....	37
<b>2. INSTALLATION INSTRUCTIONS</b> .....	<b>38</b>
2.1. Dimensions and Pinout .....	38
<b>3. OVERVIEW OF J1939 FEATURES</b> .....	<b>39</b>
3.1. Introduction to Supported Messages .....	39
3.2. NAME, Address and Software ID .....	40
<b>4. ECU SETPOINTS ACCESSED WITH AXIOMATIC ELECTRONIC ASSISTANT</b> .....	<b>43</b>
4.1. Accessing the ECU Using Axiomatic Electronic Assistant .....	43
4.2. J1939 Network Parameters .....	43
4.3. Universal Input Setpoints .....	45
4.4. Proportional Output Setpoints .....	45
4.5. Constant Data List .....	47
4.6. Lookup Table .....	47
4.7. Programmable Logic .....	49
4.8. Math Function Block .....	51
4.9. Conditional Logic Block Setpoints .....	53
4.10. Set-Reset Latch Block .....	54
4.11. CAN Transmit Setpoints .....	55
4.12. CAN Receive Setpoints .....	56
4.13. General Diagnostics Options .....	58
4.14. Diagnostics Blocks .....	58
4.15. DTC React Function Block .....	61
<b>5. REFLASHING OVER CAN WITH EA BOOTLOADER</b> .....	<b>63</b>

Table 1. Universal Input Function Block Output Signal ..... 10

Table 2. Universal Input Function Block Configuration Parameters..... 10

Table 3. Universal Input Analog Input Filter Parameters ..... 12

Table 4. Universal Input Function Block Counters ..... 13

Table 5. Setting Pull-Up/Pull-Down Resistor for Selected Input Polarity. Universal Inputs ..... 13

Table 6 – Enable Response Options..... 15

Table 7 – Override Response Options ..... 15

Table 8 – Output Type Options for Proportional Output..... 17

Table 9 – Digital Response Options ..... 17

Table 10 – Fault Response Options ..... 18

Table 11: Control Response Options ..... 19

Table 12: PID Response Options ..... 20

Table 13 – Lamp Set by Event in DM1 Options ..... 23

Table 14 – FMI for Event Options..... 23

Table 15 – Low Fault FMIs and corresponding High Fault FMIs ..... 24

Table 16. Math function X Operator Options ..... 26

Table 17. Input Operator Options ..... 28

Table 18. Condition Operator Options..... 28

Table 19. Set-Reset Function block operation ..... 29

Table 20. X-Axis Type Options ..... 30

Table 21. Response # Options ..... 30

Table 22. Table X – Condition Y Operator Options ..... 32

Table 23. Table X – Conditions Logical Operator Options ..... 32

Table 24 – Available Control Sources and Numbers ..... 36

Table 25 – AX103000 Connector Pinout..... 38

Table 26 – J1939 Network Setpoints..... 44

Table 27 – Universal Input Setpoints..... 45

Table 28 – Proportional Output Setpoints ..... 46

Table 29 – Lookup Table Setpoints..... 48

Table 30 – Programmable Logic Setpoints ..... 51

Table 31 – Math Function Setpoints..... 52

Table 32. Default Conditional Block Setpoints ..... 53

Table 33. Default Set-Reset Latch Block Setpoints ..... 54

Table 34 – CAN Transmit Message Setpoints ..... 56

Table 35 – CAN Receive Setpoints ..... 56

Table 36 – General Diagnostics Options Setpoints..... 58

Table 37 – Diagnostic Block Setpoints ..... 59

Table 38 – DTC React Setpoints..... 61

Figure 1 The ECU Flowchart ..... 9

Figure 2 – Hotshot Digital Profile ..... 18

Figure 3 – Double Minimum and Maximum Error Thresholds ..... 22

Figure 4. The Diagnostics Configuration ..... 25

Figure 5. The Example of DM1 Message ..... 25

Figure 6. Math Configuration ..... 26

Figure 7. The Math Function Block Output ..... 27

Figure 8: Conditional Block Diagram ..... 27

Figure 9. The conditional Logic Block’s Output ..... 29

Figure 10. First Lookup Table Response Configuration ..... 31

Figure 11. Second Lookup Table Response Configuration ..... 31

Figure 12. Graphical Representation of the Lookup Table Example ..... 31

Figure 13. Programmable Logic Block Configuration ..... 33

Figure 14. The Programmable Logic Block Output ..... 33

Figure 5 – Analog source to Digital input ..... 37

Figure 6 – AX103000 Dimensional Drawing ..... 38

Figure 7 – General ECU Information ..... 41

Figure 8 – Screen Capture of J1939 Setpoints ..... 44

Figure 9 – Screen Capture of Universal Input Setpoints ..... 45

Figure 11 – Screen Capture of Proportional Output Setpoints ..... 46

Figure 12 – Screen Capture of Constant Data List Setpoints ..... 47

Figure 13 – Screen Capture of Lookup table Setpoints ..... 48

Figure 14 – Screen Capture of Programmable Logic Setpoints ..... 50

Figure 15 – Screen Capture of Math Function Block Setpoints ..... 52

Figure 16: Screen Capture of Conditional Block Setpoints ..... 53

Figure 17: Screen Capture of Set-Reset Latch Block Setpoints ..... 54

Figure 18 – Screen Capture of CAN Transmit Message Setpoints ..... 55

Figure 19 – Screen Capture of CAN Receive Message Setpoints ..... 56

Figure 20 – Screen Capture of General Diagnostics Options Setpoints ..... 58

Figure 21 – Screen Capture of Diagnostic Block Setpoints ..... 59

Figure 22 DTC React Setpoints ..... 61

## REFERENCES

J1939	Recommended Practice for a Serial Control and Communications Vehicle Network, SAE, April 2011
J1939/21	Data Link Layer, SAE, December 2010
J1939/71	Vehicle Application Layer, SAE, March 2011
J1939/73	Application Layer-Diagnostics, SAE, February 2010
J1939/81	Network Management, SAE, March 2017
TDAX103000	Technical Datasheet, Axiomatic Technologies 2023
UMAX07050x	User Manual, Axiomatic Electronic Assistant and USB-CAN, Axiomatic Technologies, July 2023

***This document assumes the reader is familiar with the SAE J1939 standard. Terminology from the standard is used, but not described in this document.***



NOTE: This product is supported by Axiomatic Electronic Assistant V4.10.78.0 and higher.

## 1. OVERVIEW OF CONTROLLER

---

This H-bridge controller measures numerous types of input signals as well as provides different outputs. It has three Universal Inputs. The two outputs can provide up to 2.5 A of current. Each output is a half-bridge. They form a full H-bridge when used together. Flexible circuit design gives the user a wide range of configurable input and output types. Powerful control algorithms allow the user to program the controller for a wide range of applications without the need for custom firmware. It features auto-baud-rate detection.

The Axiomatic Electronic Assistant is used to configure the device. Programming configurable properties, EA setpoints, are listed in chapter 4. Setpoint configuration can be saved in a file which can then be utilized to program the same configuration to another AX103000. Throughout this document EA setpoint names are referred with bolded text in double-quotes and the setpoint option is referred with italicized text in single-quotes. For example, “**Input Type**” setpoint set to option ‘*Voltage Input*’.

In this document the configurable properties of the ECU are divided into function blocks, namely input function block, output function block, diagnostic function block, lookup table function block, programmable logic function block, math function block, CAN transmit message function block and CAN receive message function block. Input function block includes properties used to select input sensor functionality. Diagnostic function block properties are used to configure fault detection and reaction functionalities. Lookup table function blocks, programmable logic function blocks, math function blocks offer some logical programming to convert signals. The CAN transmit message function block configures properties of the messages sent to the CAN busses. And the CAN receive message function block configures properties of the messages received from the CAN buses. These function blocks are presented in detail in next subchapters.



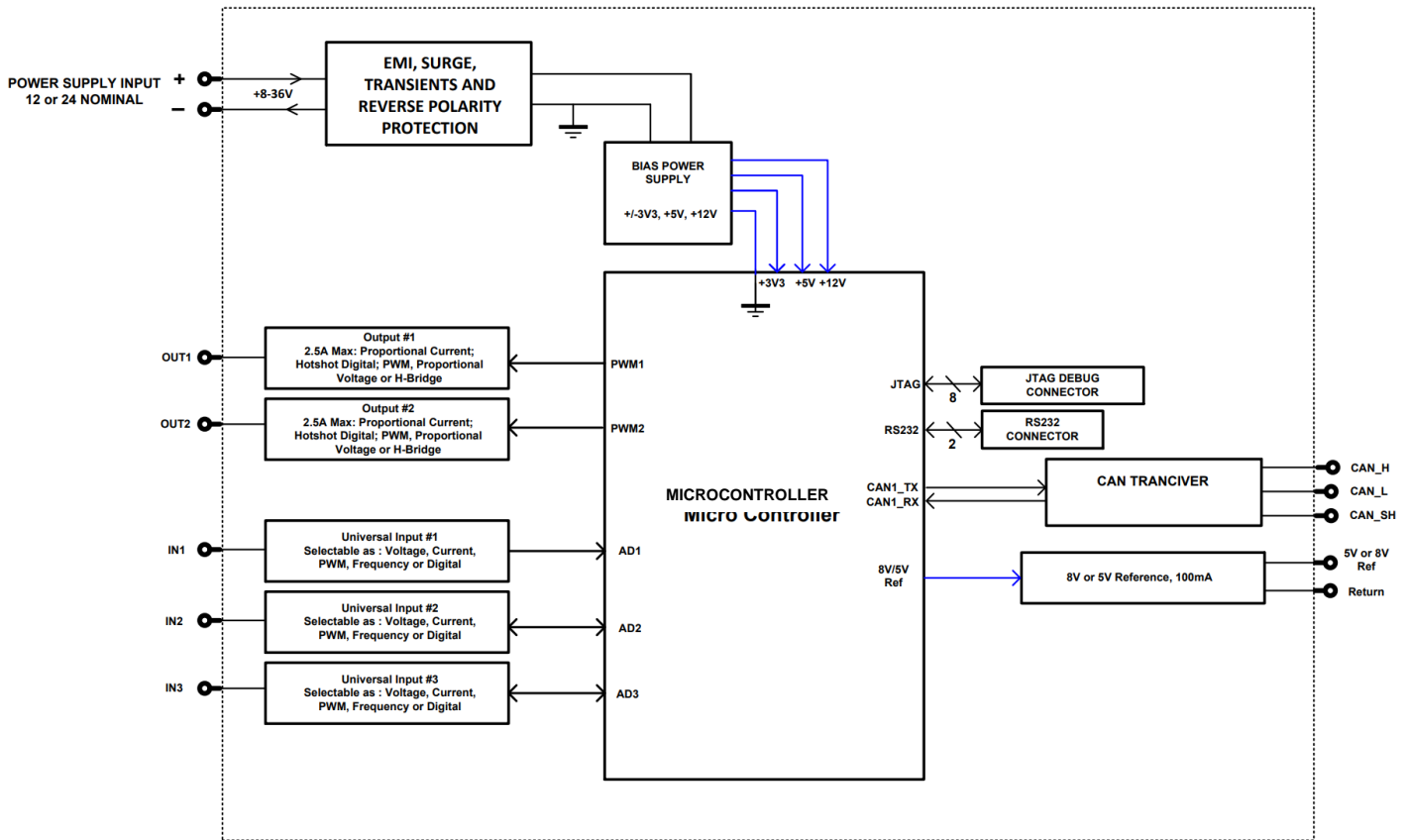


Figure 1 The ECU Flowchart

## 1.1. Input Function Blocks

The controller has seven Universal Inputs. They can be configured to measure voltage, frequency, pulse width modulation (PWM) or digital signal.

### 1.1.1. Universal Input

The Universal Input function block translates physical input signals into the internal function block output signal that can be used by other function blocks of the controller.

There are 3 independent Universal Input function blocks presenting their own universal physical inputs.

The internal function block output signal type and units of measurement are presented below.

Table 1. Universal Input Function Block Output Signal

Input Parameter	Type	Units
Voltage	Continuous	V
Discrete Voltage Level	Discrete	{0,1}
Frequency	Continuous	Hz
PWM Duty Cycle	Continuous	%

Each Universal Input function block has the following configuration parameters.

Table 2. Universal Input Function Block Configuration Parameters

Parameter	Default Value	Range	Units	Description
Input Parameter	1 - Voltage	0 - Input Disabled, 1 - 1Voltage, 2 - Discrete Voltage Level, 3 - Frequency, 4 - PWM Duty Cycle	–	Defines the input physical parameter that will be measured by the function block.
Input Voltage Range	0 - 0...5V	0 - 0...5 V, 1 - 0...10 V	V	Used in the "Voltage" mode
Input Range Min	0	0...100	-	Depends on the Input Parameter. Used for diagnostic purposes
Input Range Max	5	0...100	-	Depends on the Input Parameter. Used for diagnostic purposes
Voltage LoZ Input	0 - No	0 - Pull Down Disabled, 1 - Pull Down Enabled	–	Activates a 10kOhm pull-down resistor to avoid ghost voltages in the "Voltage" mode. Warning: Measurement accuracy will be decreased!
Analog Input Filter	0 - Disabled	0 - Disabled, 1 - 50Hz Noise Rejection, 2 - 60Hz Noise Rejection, 3 - Both: 60Hz and 50Hz Noise Rejection	–	Noise Rejection in "Voltage", "Current" and "Resistance" modes
Pull-Up/Pull-Down Resistor	0 - Disabled	0 - Disabled, 1 - 10kOhm Pull-Up,	–	Used in "Discrete Voltage Level", "Frequency", and

Parameter	Default Value	Range	Units	Description
		2 - 10kOhm Pull-Down		"PWM Duty Cycle" modes.
Input Polarity	0 - Active High	0 - Active High, 1 - Active Low	–	Used in "Discrete Voltage Level", "Frequency", and "PWM Duty Cycle" modes.
Discrete Input Debounce Time	50ms	0...1000	ms	Used in "Discrete Voltage Level" mode. If 0 - no debouncing.
Frequency Range	1Hz...10kHz	1Hz...10kHz,	Hz	A 16-bit counter is used. Used in "Frequency", and "PWM Duty Cycle" modes.
Frequency/PWM Debounce Filter	0 - Disabled	0 - Disabled, 1 - 142ns, 2 - 1.14us, 3 - 6.10us	–	Used in "Frequency", and "PWM Duty Cycle" modes.
Frequency/PWM Averaging	0 - No Averaging	0 - No Averaging, 1 - 3 Readings, 2 - 5 Readings, 3 - 10 Readings	–	Defines a moving average filter used in "Frequency", and "PWM Duty Cycle" modes.
Software Filter Type	0 – Disabled	0 – Disabled, 1 – Moving Average, 2 – Repeating Average		
Software Filter Constant	10	0...60000		

### 1.1.2. Voltage Measurements

The Universal Inputs can measure voltages in voltage ranges set by the Voltage Range configuration parameter.

To avoid an influence of ghost voltages, the “**Voltage LoZ Input**” configuration parameter can be activated. This will reduce the accuracy of voltage measurements due to the influence of the

10kOhm pull-down shunt resistor and should be used only after careful consideration of the shunt resistor influence on the measured circuit.

The user can set the Analog Input Filter configuration parameter to reduce noise in voltage and other analog signal measurements. The filter is designed to suppress noise from industrial offline voltages. Even when the analog input filter is disabled, the minimum signal filtering is performed by the function block. The parameters of the analog input filter are presented below.

Table 3. Universal Input Analog Input Filter Parameters

Analog Input Filter	Cut-off Frequency (at -3dB)	Settling Time (to 100% of Final Value)	Output Signal Update Rate
Disabled <sup>1</sup>	70Hz	10ms	1.67ms
50Hz Noise Rejection	12Hz	76.7ms	3.33ms
60Hz Noise Rejection	14Hz	63.3ms	3.33ms
Both: 60Hz and 50Hz Noise Rejection	2.3Hz	396.7ms	16.67ms

<sup>1</sup> Minimum filtering is still performed.

### 1.1.3. Discrete Voltage Level

The Universal Inputs can accept discrete voltage levels. The user should specify the input polarity and define whether the pull-up/pull-down resistor is necessary on the input.

When the “10kOhm Pull-Up” is selected, the pull-up resistor is connected to the internal +5V voltage rail.

The input states are sampled every 1ms. If debouncing is required, it is set by the “**Discrete Input Debounce Time**” configuration parameter. If the “**Discrete Input Debounce Time**” is zero, the discrete voltage level input is not debounced.

### 1.1.4. Frequency and PWM

The frequency and PWM duty cycle measurements are performed by counting high-frequency internal clock pulses on every period of the input signal. The universal input channels have different internal organization due to limited hardware resources.

All universal inputs use 16-bit counters with the constant frequency range of 1...10kHz

Table 4. Universal Input Function Block Counters

Function Block	Counter	Frequency Range	Counter Base	Shared Input	Frequency Range and Debounce Filter Setting
Universal Input #1	16-bit	1Hz...10kHz,	Dedicated	N/A	Same input
Universal Input #2			Dedicated	N/A	Same input
Universal Input #3			Dedicated	N/A	Same input

To measure frequency or PWM duty cycle, the user should first select the Frequency Range parameter and then define how the Pull-Up/Pull-Down Resistor, Frequency/PWM Debounce Filter, and the Frequency/PWM Averaging parameters should be set.

The Input Polarity defines the active edge of the input signal. The Pull-Up/Pull-Down Resistor can be used to pull the input to a no-signal state to avoid an undefined input condition when the signal source is disconnected. The Input Polarity and Pull-Up/Pull-Down Resistor are normally set the following way.

Table 5. Setting Pull-Up/Pull-Down Resistor for Selected Input Polarity. Universal Inputs

Input Polarity	Pull-Up/Pull-Down Resistor
Active High	“Disabled” or “10kOhm Pull-Down”
Active Low	“Disabled” or “10kOhm Pull-Up”

The frequency/PWM debounce filter is used to filter out parasitic spikes that can be present in a noisy input signal. It can be helpful to prevent the input from going into the Recovery state (see 1.1.6 Special Conditions) when, for example, mechanical switches are used to commutate the input signal.

The debounce filter should be used with caution since it can reduce the accuracy and resolution of frequency and PWM measurements if the debouncing time is not significantly less than the period of the input signal.

When a frequency or PWM signal presents a slowly changing parameter, setting an additional moving average filter using the Frequency/PWM Averaging configuration parameter can be helpful in smoothing the results of the input measurements.

### 1.1.5. Software Filtering

There are three options under **“Software Filter Type”** with two actual types of software filtering: *‘Moving Average’* and *‘Repeating Average’*. Both are used to smoothen the actual sampling and provide more precise data.

If customer use the *‘Moving Average’* type under the **“Software Filter Type”** setpoint the unit will collect the number of samples equal to the value under the **“Software Filter Constant”** setpoint

and then calculate the average. Each new sample will replace the oldest sample and the average will be recalculated during each new iteration. The algorithm is shown below:

Moving Average:

1. Calculating the first average:

$$N_{avg} = \frac{\sum_{i=0}^C N_i}{C} (1), \text{ where}$$

$C$  – Software Filter Constant value;

$N_i$  – the number of current value;

$N_{avg}$  – Average sample.

2. Replacing the latest item and recalculating the average using formula (1):

$$N_{avg}^{(i)} = \frac{N_{avg}^{(i-1)} - N_l + N_{new}}{C} (2), \text{ where}$$

$C$  – Software Filter Constant value;

$N_{avg}^{(i)}$  – the new average sample;

$N_{avg}^{(i-1)}$  – a previous average sample;

$N_l$  – the oldest sample;

$N_{new}$  – a current sample.

After first average has been calculated by using formula (1), the second formula is applied during each iteration.

Repeating Average:

The repeating average method is similar to the moving average except that instead of recalculating the average after each new sample, the unit will gather the required number of samples each time instead.

### 1.1.6. Special Conditions

Even though the Frequency range is 1Hz...10kHz, each Universal Input can measure frequency within the range of 0.8Hz to 12.5kHz.

When the PWM signal is absent, the duty cycle is measured as 0 or 100% based on the voltage level on the input and the selected Input Polarity. The voltage level is sampled on the counter saturation events until the PWM signal is back on the input.

The transient time between the PWM signal duty cycle and the duty cycle of the DC level when the signal disappears can be up to the Maximum Recovery Time. During the transient time, the measured value will stay equal to the last measured value of the PWM signal duty cycle.

The PWM input signal with a frequency above zero but below the Minimum Frequency value is not allowed. The duty cycle will not be measured, instead, it will be jumping between 0% and 100% depending on the voltage level at the input on the counter saturation events.

When the PWM input signal frequency exceeds the Maximum Frequency value, the input goes into the Recovery state and the PWM duty cycle is measured as 0%. Similar to frequency measurements, the input will stay in the Recovery state for up to the Maximum Recovery Time before the duty cycle is measured again.

## 1.2. Proportional Output Function Blocks

The controller has altogether five Proportional Outputs. The Proportional Output is half-bridge drive with high side sourcing up to 2.5A. The current drawn from the output is measured to form a current feedback loop. All outputs have configurable setpoints. The Proportional Output and its setpoints are discussed in detail in the Section 4.4.

The “**Control Source**” setpoint together with “**Control Number**” setpoint determine which signal is used to drive the output. For example, setting “**Control Source**” to ‘*Universal Input Measured*’ and “**Control Number**” to ‘1’, connects signal measured from Universal Input1 to the output in question. The input signal is scaled per input type range between 0 and 1 to form control signal. Outputs respond in a linear fashion to changes in control signal.

The “**Enable Source**” setpoint together with “**Enable Number**” setpoint determine the enable signal for the output in question. The “**Enable Response**” setpoint is used to select how output will respond to the selected Enable signal. “**Enable Response**” setpoint options are listed in Table 6. If “**Enable Source**” is set to ‘*Control not used*’, the Enable signal is interpreted to be ON. If a non-digital signal is selected as Enable signal the signal is interpreted as shown in Figure 15.

Table 6 – Enable Response Options

0	<i>Enable When On, Else Shutoff</i>
1	<i>Enable When On, Else Rampoff</i>
2	<i>Enable When On, Else Keep</i>
3	<i>Enable When Off, Else Shutoff</i>
4	<i>Enable When Off, Else Rampoff</i>
5	<i>Enable When Off, Else Keep</i>

The Override option allows the user to choose whether to drive the output with the override input engaged/disengaged, depending on the logic selected in “**Override Response.**” The options for “**Override Response**” are listed in Table 7. When override is active, the output will be driven to the value in “**Output at Override Command**” regardless of the value of the Control input.

Table 7 – Override Response Options

0	<i>Override When On</i>
1	<i>Override When Off</i>

The options for both “**Enable Source**” and “**Override Source**” are the same as the sources listed in Table 7.

*Please note that the using parameters “**Enable When Off/On, Else Ramp**” are not recommended and should not be used for the Digital On/Off and Digital Hotshot.*

Another fault response which can be enabled is that of a microprocessor over-temperature or power faults automatically disabling the outputs until it has cooled back to the operating range, if the corresponding setpoint is enabled. This will be described in more detail in Section 1.5

Fault conditions are checked for first, and the control signal will then be evaluated only if they are not present. If Enable, Override and Control inputs are all used, the Enable logic is evaluated first, then the Override, and lastly the Control.

“**Output Type**” setpoint options for the Proportional Output are listed in Table 8. “**Output Type**” setpoint determines what kind of signal the output produces. Changing this setpoint causes other setpoints in the group to update to match selected type, thus the “**Output Type**” should be selected before configuring other setpoints within the setpoint group.

For Proportional outputs signal minimum and maximum values are configured with “**Output At Minimum Command**” and “**Output At Maximum Command**” setpoints. Value range for both of the setpoints is limited by selected “**Output Type**”.

Regardless of what type of control input is selected, the output will always respond in a linear fashion to changes in the input per Equation 1.

$$y = mx + a$$

$$m = \frac{Y_{max} - Y_{min}}{X_{max} - X_{min}}$$

$$a = Y_{min} - m * X_{min}$$

*Equation 1 - Linear Slope Calculations*

In the case of the Output Control Logic function block, X and Y are defined as

Xmin = Control Input Minimum    Ymin = “**Output at Minimum Command**”

Xmax = Control Input Maximum    Ymax = “**Output at Maximum Command**”

In all cases, while X-axis has the constraint that Xmin < Xmax, there is no such limitation on the Y-axis. Thus configuring “**Output At Minimum Command**” to be greater than “**Output At Maximum Command**” allows output to follow control signal inversely.

In order to prevent abrupt changes at the output due to sudden changes in the command input, the user can choose to use the independent up or down ramps to smooth out the coil’s response. The “**Ramp Up**” and “**Ramp Down**” setpoints are in milliseconds, and the step size of the output change will be determined by taking the absolute value of the output range and dividing it by the ramp time.



Table 8 – Output Type Options for Proportional Output

0	<i>Disabled</i>
1	<i>Proportional Current (0-2A)</i>
2	<i>Digital Hotshot (0-2A)</i>
3	<i>Proportional Voltage (0-Vps)</i>
4	<i>Digital On/off (0-Vps)</i>
5	<i>PWM Duty Cycle</i>

‘*Proportional Current*’ type has associated with it two setpoints not used by other types, which are the “**Dither Frequency**” and “**Dither Amplitude**” values. The output is controlled by high frequency signal (25kHz), with the low frequency dither superimposed on top. The dither frequency will match exactly what is programmed into the setpoint, but the exact amplitude of the dither will depend on the properties of the load coil. When adjusting the dither amplitude value, select one that is high enough to ensure an immediate response to the coil to small changes in the control inputs, but not so large as to effect the accuracy or stability of the output. Refer to the coil’s datasheet for more information.

The ‘*Proportional Voltage*’ uses the measured value of the power supply, and adjusts the duty cycle of the output such that the average value will match the target output voltage. Since the output is running at a high frequency (25kHz), the voltage can be easily averaged using a simple low pass filter.

The ‘*PWM Duty Cycle*’ option allows the user to run the output at fixed frequency configure with “**PWM Output Frequency**” setpoint, while the duty cycle changes depending on the control signal.

Instead of proportional, there are also two types of digital responses possible as well. With the ‘*Digital On/Off*’ type, should the control require the output to be on, it will be turned on at whatever the system power supply is. The output will source whatever current is required by the load, up to 3.5A.

If a digital “**Output Type**” has been selected the “**Digital Response**” setpoint will be enabled as shown in Table 9.

Table 9 – Digital Response Options

0	<i>Normal On/Off</i>
1	<i>Inverse Logic</i>
2	<i>Latched Logic</i>
3	<i>Blinking Logic</i>

In a ‘*Normal*’ response, when the Control input commands the output ON, then the output will be turned ON. However, in an ‘*Inverse*’ response, the output will be ON unless the input commands the output ON, in which case it turns OFF.

If a ‘*Latched*’ response is selected, when the input commands the state from OFF to ON, the output will change state.

If a ‘*Blinking*’ response is selected, then while the input command the output ON, it will blink at the rate in the “**Digital Blink Rate**” setpoint. When commanded OFF, the output will stay off. A blinking response is only available with a ‘*Digital On/Off*’ type of output (not a Hotshot type.)

The 'Hotshot Digital' type is different from a simple 'Digital On/Off' in that it still controls the current through the load. This type of output is used to turn on a coil then reduce the current so that the valve will remain open, as shown in Figure 2. Since less energy is used to keep the output engaged, this type of response is very useful to improve overall system efficiency. With this output type there are associated three setpoints: "Hold Current", "Hotshot Current" and "Hotshot Time" which are used to configure form of the output signal as shown in Figure 2.

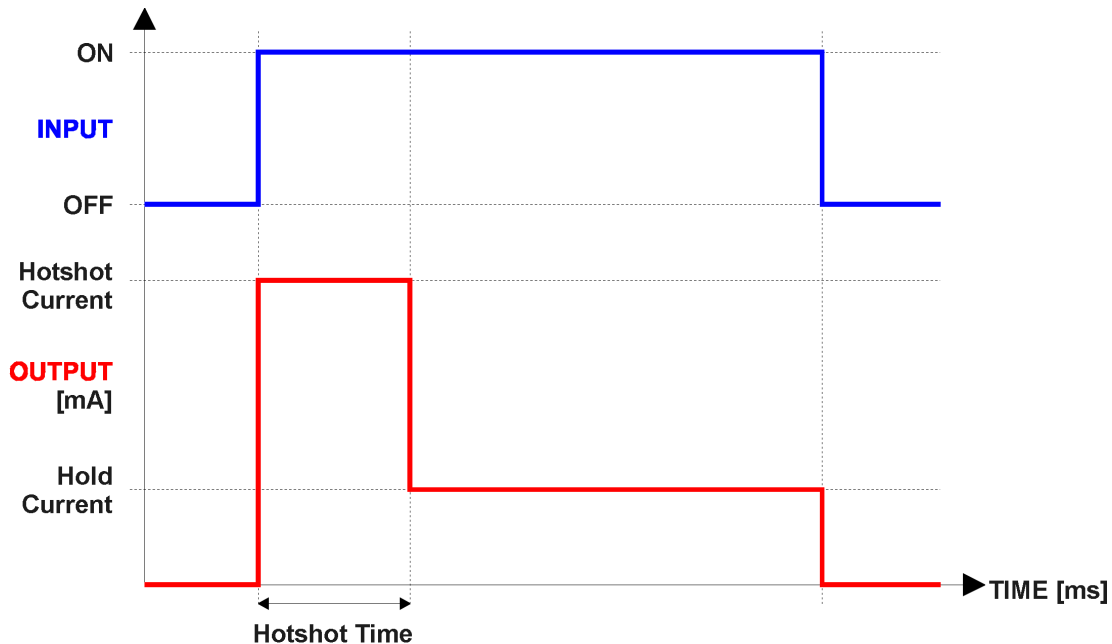


Figure 2 – Hotshot Digital Profile

Fault detection is available for current output types. A current feedback signal is measured and compared to desired output current value. Fault detection and associated setpoints are presented in section 1.5. When fault is detected the output will respond per "Control Fault Response" setpoint as outlined in Table 10.

Table 10 – Fault Response Options

0	Shutoff Output
1	Apply Fault Value
2	Hold Last Value

Another fault response that can be enabled is that a power supply over voltage or under voltage will automatically disable ALL outputs. Note: this setpoint is associated with the **Power Supply Diag** function block. Also, if the **Over Temperature Diag** function block is enabled, then a microprocessor over-temperature reading disables all the outputs until it has cooled back to the operating range.

The proportional output is inherently protected against a short to GND or +Vps by circuitry. In case of a dead short, the hardware will automatically disable the output drive, regardless of what the processor is commanding for the output. When this happens, the processor detects output hardware shutdown and commands off the output in question. It will continue to drive non-shortened outputs normally and periodically (every 5 seconds) try to re-engage the short load, if still commanded to do so. If the fault has gone away since the last time the output was engaged while shorted, the controller will automatically resume normal operation.

In the case of an open circuit, there will be no interruption of the control for the output. The processor will continue to attempt to drive the open load.

The measured current through the load is available to be broadcasted on a CAN message if desired. It is also used as the input to the diagnostic function block for each output, and an open or shorted output can be broadcasted in a DM1 message on the CAN network

### 1.3. H-Bridge Function Block

The H-Bridge Function Block combines two proportional outputs into one to provide an H-Bridge output driver. To enable it, the **"H-Bridge Enabled"** setpoint needs to be set to 1, True. In this case, both proportional outputs will be controlled by this function block.

**Please note:** if the **"H-Bridge Enabled"** setpoint is set to 1, True, the Proportional Output Blocks 1 and 2 will not be available for modification. However, the PID coefficients still can be modified and visible via Axiomatic Electronic Assistant tool.

The control sources, direction source, ramp up/down time, and responses are available in this function block. **"Output At Maximum/Minimum Command"** setpoints define the current output limits that can be set according to the **"Control Source"** settings. The momentary direction of the h-bridge is defined according to the **"Direction Source"**. The **"Output At Maximum/Minimum Command"** setpoints provide a bipolar range defined by the direction control source. If the range is set to 0...1500mA, it means that the possible output will vary in this range if direction is forward and -1500...0mA if the direction is backward. It is the case for the **"Override Output Value"** setpoint as well.

**Please note:** if **"Control Source"** or **"Direction Source"** is set to 0, 'No Source', the output will be disabled. Both sources should be set to any non-zero value to allow further configuration.

The control source has also an additional setting: the **"Control Response"** setpoint. It matches the one from Proportional Output Function Block. All possible options for this setpoint are shown below.

Table 11: Control Response Options

0	Single Out Profile
1	OFF When Below Minimum
2	OFF When Above Maximum

To control the speed of output rising or falling the **"Ramp Up/Down Time"** should be used. These setpoints define the time needed to rise the output from **"Output At Minimum Command"** to **"Output At Maximum Command"** value for the ramp up and vice versa for the ramp down. For example, if range is set to 0 to 1000mA, current output is 0mA, and the **"Ramp Up Time"** is set to 5000, the ECU will require 5s to ramp the output up to the maximum. If the current target output value is 500mA, the ECU will spend 2.5s to set it to the maximum. Both ramp up and down setpoints cannot be set to a value lower than 100ms.

**Please note:** the **"Ramp Up/Down Time"** setpoints are meant to ramp output in one direction per time only. If the direction is changed, the Output will drop to 0 and then will ramp up/down to a needed value. For example, if the current output's value is 500mA and the direction is backward

(the actual output is -500mA), at the direction change, the output will drop to 0mA and only after that will ramp up to a 500mA (or to any new commanded value).

The “**Enable Source**”, and “**Override Source**” setpoints match the functionality of the Proportional Output Function Block and are shown in the Section 1.2.

The “**Enable Response**” setpoint has the same configuration options as Proportional Output block. However, options ‘Enable When ON Else Shutoff’ and ‘Enable When OFF Else Shutoff’ are not recommended to be used since they will rapidly reset output to 0mA.

#### 1.4. PID Control Function Block

The PID Control function block is an independent logic block, but it is normally intended to be associated with proportional output control blocks described in the chapters before. When the **Control Source** for an output has been setup as a *PID Function Block*, the command from the selected PID block drives the physical output on the motor controller unit.

To enable the PID Control function the “**PID Enabled**” setpoint should be set to ‘1, True’. The “**Target Source**” and “**Target Number**” setpoints determine control input and the “**Feedback Source**” and “**Feedback Number**” setpoints determine the established the feedback signal to the PID Control function block. The “**Control Response**” will use the selected inputs as per the options listed in Table 12. When active, the PID algorithm will be called every “**Cycle Time**” in milliseconds.

Table 12: PID Response Options

0	Single Output
1	Setpoint Control
2	On When Over Target
3	On When Below Target

When a ‘*Single Output*’ response is selected, the Target and Feedback inputs do not have to share the same units. In both cases, the signals are converted to a percentage value based on the minimum and maximum values associated with the source function block.

For example, a CAN command could be used to set the target value, in which case it would be converted to a percentage value using “**Data Minimum**” and “**Data Maximum**” setpoints in the appropriate *CAN Receive X* function block. The closed-loop feedback signal, i.e. a Current Feedback from the proportional current output, could be selected as the feedback source. In this case the value of the input would be converted to a percentage based on the “**Output Data Min**” and “**Output Data Max**” setpoints in the output block. The output of the PID function would depend on the difference between the commanded target and the measured feedback as a percentage of each signals range. In this mode, the output of the block would be a value from 0 to 100%.

In Order to allow the output to stabilize, the user can select a non-zero value for “**Output Tolerance**”. If the absolute value of  $Error_k$  is less than this value,  $Error_k$  in the formula below will be set to zero.

The PID algorithm used is shown below, where  $G$ ,  $K_i$ ,  $T_i$ ,  $K_d$ ,  $T_d$  and  $Loop\_Update\_Rate$  are configurable parameters.

$$PIDOutput_k = P_k + I_k + D_k$$

$$P_k = P\_Gain * Error_k$$

$$I_k = I\_Gain * ErrorSum_k$$

$$D_k = D\_Gain * (Error_k - Error_{k-1})$$

$$Error_k = Target - Feedback$$

$$ErrorSum_k = ErrorSum_{k-1} + Error_k$$

$$P\_Gain = G$$

$$I\_Gain = G * K_i * T / T_i \text{ (Note: If } T_i \text{ is zero, } I\_Gain = 0)$$

$$D\_Gain = G * K_d * T_d / T$$

$$T = Loop\_Update\_Rate * 0.001$$

*Please Note: Each system will have to be turned for the optimum output response. Response times, overshoots and other variables will have to be decided by the customer using an appropriate PID tuning strategy. Axiomatic is not responsible for tuning the control system.*

## 1.5. Diagnostic Function Blocks

### 1.5.1. Description

The ECU supports diagnostic messaging. DM1 message is a message, containing Active Diagnostic Trouble Codes (DTC) that is sent to the J1939 network in case a fault has been

SPN	Suspect Parameter Number	(user defined)
FMI	Failure Mode Identifier	(see Table 15)
CM	Conversion Method	(always set to 0)
OC	Occurrence Count	(number of times the fault has happened)

detected. A Diagnostic Trouble Code is defined by the J1939 standard as a four byte value which is a combination of:

In addition to supporting the DM1 message, the ECU Input also supports:

DM2	Previously Active Diagnostic Trouble Codes	Sent only on request
DM3	Diagnostic Data Clear/Reset of Previously Active DTCs	Done only on request
DM11	Diagnostic Data Clear/Reset for Active DTCs	Done only on request

Fault detection and reaction is a standalone functionality that can be configured to monitor and report diagnostics of various controller parameters.

By default, the monitoring of operating voltage, CPU temperature and receive message timeouts is configured to diagnostics blocks 1, 2 and 3., In case any of these three diagnostics blocks are needed for some other use, the default settings can be adjusted by the user to suit the application. There are 4 fault types that can be used, “*Minimum and maximum error*”, “*Absolute value error*”, “*State error*” and “*Double minimum and maximum error*”.

“*Minimum and maximum error*” has two thresholds, “*MIN Shutdown*” and “*MAX Shutdown*” that have configurable, independent diagnostics parameters (SPN, FMI, Generate DTCs, delay before flagging status). In case the parameter to monitor stays between these two thresholds, the diagnostic is not flagged.

**Absolute value error** has one configurable threshold with configurable parameters. In case the parameter to monitor stays below this threshold, the diagnostic is not flagged.

**State error** is similar to the Absolute value error, the only difference is that State error does not allow the user to specify specific threshold values; thresholds ‘1’ and ‘0’ are used instead. This is ideal for monitoring state information, such as received message timeouts.

**Double minimum and maximum error** lets user to specify four thresholds, each with independent diagnostic parameters. The diagnostic status and threshold values is determined and expected as show in Figure 3 below.

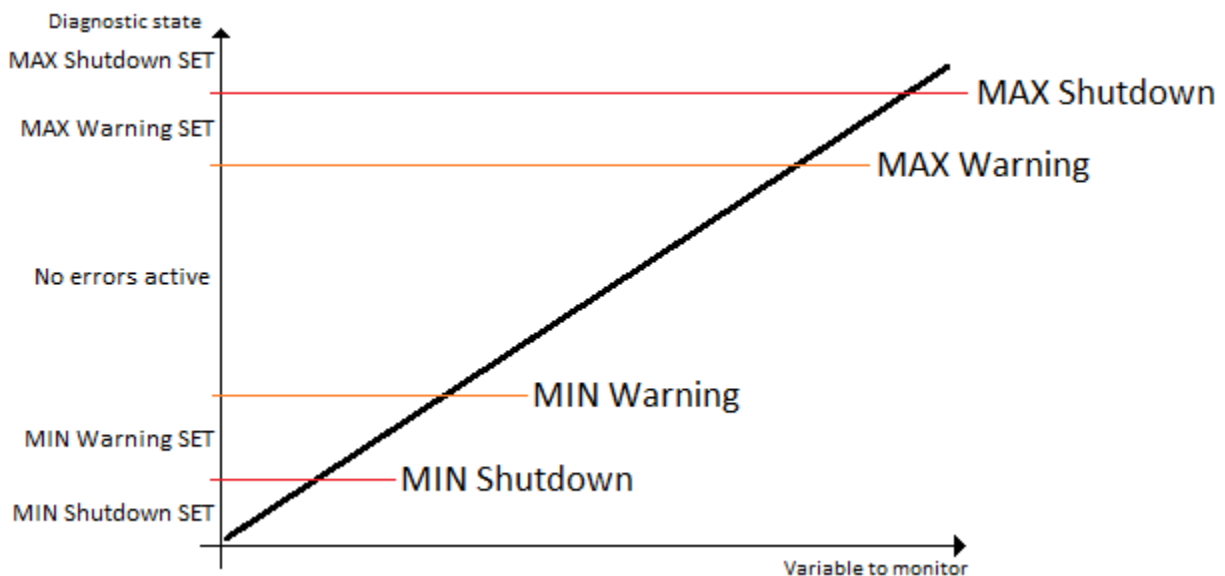


Figure 3 – Double Minimum and Maximum Error Thresholds

In case any of the Diagnostics blocks is configured to monitor Output Current Feedback, there is an internal error status flag maintained automatically for that particular output. This internal flag can be used for driving the particular output to a specified state in case of diagnostic event using Proportional Current Output setpoints “**Control Fault Response**”, “**Output in Fault Mode**” and “**Fault Detection Enabled**”.

There is also built in error status flags for power supply and CPU temperature monitoring. In case any of the diagnostics blocks is measuring these two parameters, the corresponding internal error status flags can be used for shutting down the unit in case of failure. The setpoints “**Power Fault**

**Disables Outputs” and “Over Temperature Shutdown”** can be used for enabling the shutdown of the unit (shutdown == output driving is turned off).

While there are no active DTCs, the ECU will send “No Active Faults” message. If a previously inactive DTC becomes active, a DM1 will be sent immediately to reflect this. As soon as the last active DTC goes inactive, a DM1 indicating that there are no more active DTCs will be sent. If there is more than one active DTC at any given time, the regular DM1 message will be sent using a multipacket message to the Requester Address using the Transport Protocol (TP).



At power up, the DM1 message will not be broadcasted until after 5 second delay. This is done to prevent any power up or initialization conditions from being flagged as an active error on the network.

When the fault is linked to a DTC, a non-volatile log of the occurrence count (OC) is kept. As soon as the controller detects a new (previously inactive) fault, it will start decrementing the **“Delay Before Event is Flagged”** timer for that Diagnostic function block. If the fault has remained present during the delay time, then the controller will set the DTC to active, and will increment the OC in the log. A DM1 will immediately be generated that includes the new DTC. The timer is provided so that intermittent faults do not overwhelm the network as the fault comes and goes, since a DM1 message would be sent every time the fault shows up or goes away.

By default, the fault flag is cleared when error condition that has caused it goes away. The DTC is made Previously Active and is it is no longer included in the DM1 message. To identify a fault having happened, even if the condition that has caused is one away, the **“Event Cleared only by DM11”** setpoint can be set to ‘True’. This configuration enables DTC to stay Active, even after the fault flag has been cleared, and be included in DM1 message until a Diagnostic Data Clear/Reset for Active DTCs (DM11) has been requested.

As defined by J1939 Standard the first byte of the DM1 message reflects the Lamp status. **“Lamp Set by Event”** setpoint determines the lamp type set in this byte of DTC. **“Lamp Set by Event”** setpoint options are listed in Table 13. By default, the ‘Amber, Warning’ lamp is typically the one set be any active fault.

Table 13 – Lamp Set by Event in DM1 Options

0	Protect
1	Amber Warning
2	Red Stop
3	Malfunction

**“SPN for Event”** defines suspect parameter number used as part of DTC. The default value zero is not allowed by the standard, thus no DM will be sent unless **“SPN for Event”** in is configured to be different from zero. **It is user’s responsibility to select SPN that will not violate J1939 standard.** When the **“SPN for Event”** is changed, the OC of the associated error log is automatically reset to zero.

Table 14 – FMI for Event Options

0	Data Valid But Above Normal Operational Range - Most Severe Level
1	Data Valid But Below Normal Operational Range - Most Severe Level
2	Data Intermittent
3	Voltage Above Normal, Or Shorted To High Source
4	Voltage Below Normal, Or Shorted To Low Source
5	Current Below Normal Or Open Circuit
6	Current Above Normal Or Grounded Circuit

7	<i>Mechanical Error</i>
8	<i>Abnormal Frequency Or Pulse Width Or Period</i>
9	<i>Abnormal Update Rate</i>
10	<i>Abnormal Rate Of Change</i>
11	<i>Root Cause Not Known</i>
12	<i>Bad Component</i>
13	<i>Out Of Calibration</i>
14	<i>Special Instructions</i>
15	<i>Data Valid But Above Normal Operating Range – Least Severe Level</i>
16	<i>Data Valid But Above Normal Operating Range – Moderately Severe Level</i>
17	<i>Data Valid But Below Normal Operating Range – Least Severe Level</i>
18	<i>Data Valid But Below Normal Operating Range – Moderately Severe Level</i>
19	<i>Network Error</i>
20	<i>Data Drifted High</i>
21	<i>Data Drifted Low</i>
31	<i>Condition Exists</i>

Every fault has associated a default FMI with them. The used FMI can be configured with “**FMI for Event**” setpoint, presented in Table 14. When an FMI is selected from Low Fault FMIs in Table 15 for a fault that can be flagged either high or low occurrence, it is recommended that the user would select the high occurrence FMI from the right column of Table 15. There is no automatic setting of High and Low FMIs in the firmware, the user can configure these freely.

Table 15 – Low Fault FMIs and corresponding High Fault FMIs

Low Fault FMIs	High Fault FMIs
<i>FMI=1, Data Valid But Below Normal Operation Range – Most Severe Level</i>	<i>FMI=0, Data Valid But Above Normal Operational Range – Most Severe Level</i>
<i>FMI=4, Voltage Below Normal, Or Shorted to Low Source</i>	<i>FMI=3, Voltage Above Normal, Or Shorted To High Source</i>
<i>FMI=5, Current Below Normal Or Open Circuit</i>	<i>FMI=6, Current Above Normal Or Grounded Circuit</i>
<i>FMI=17, Data Valid But Below Normal Operating Range – Least Severe Level</i>	<i>FMI=15, Data Valid But Above Normal Operating Range – Least Severe Level</i>
<i>FMI=18, Data Valid But Below Normal Operating Level – Moderately Severe Level</i>	<i>FMI=16, Data Valid But Above Normal Operating Range – Moderately Severe Level</i>
<i>FMI=21, Data Drifted Low</i>	<i>FMI=20, Data Drifted High</i>

### 1.5.2. Example

In this example the Diagnostic Function Block is configured to monitor the power supply voltage level and send the DM1 message if the voltage level drops under 11V.

Here is the DM1 message configuration:

<b>SP</b> MINIMUM SHUTDOWN, Event Generates a DTC in DM1	1	True
<b>SP</b> MINIMUM SHUTDOWN, Lamp Set by Event	1	Amber,Warning
<b>SP</b> MINIMUM SHUTDOWN, SPN for Event	0x007FF00	SPN: 524032
<b>SP</b> MINIMUM SHUTDOWN, FMI for Event	0	Data Valid But Above Normal Operational Range - Most Severe Level
<b>SP</b> MINIMUM SHUTDOWN, Delay Before Event is Flagged	1000	ms

Please note: even though the Diagnostics Function Block is configured as “**Min and Max Error**”, only the low limit will be monitored. Thus a “**Event Generates a DTC in DM1**” setpoint for a maximum shutdown limit is set to 0, False.



To monitor the supply voltage, the **“Function Type to Monitor”** setpoint is set to ‘Power Supply Measured’. The rest of configurations are shown on the Figure 4.

SP Fault Detection Type	0	Min and Max Error
SP Maximum Value for Diagnostic Data	24.00	
SP Minimum Value for Diagnostic Data	0.00	
SP Use Hysteresis When Defining Thresholds	1	True
SP Hysteresis	1.00	
SP Event Cleared Only by DM11	0	False
SP Set Limit for MINIMUM WARNING		Parameter not used with current Fault Detection Type
SP Clear Limit for MINIMUM WARNING		Parameter not used with current Fault Detection Type
SP Set Limit for MAXIMUM WARNING		Parameter not used with current Fault Detection Type
SP Clear Limit for MAXIMUM WARNING		Parameter not used with current Fault Detection Type
SP Set Limit for MINIMUM SHUTDOWN	11.00	
SP Clear Limit for MINIMUM SHUTDOWN		Parameter not used - Hysteresis used when defining thresholds
SP Set Limit for MAXIMUM SHUTDOWN	22.00	

Figure 4. The Diagnostics Configuration

With this configuration, when the power supply voltage measured drops below **“Set Limit for MINIMUM SHUTDOWN”**, the DM1 message with a fault information will be broadcasted after a programmed in **“Delay Before Event is Flagged”** value in milliseconds.

The example of the DM1 message is shown below.

PR	PGN	DA	SA	Len	D0	D1	D2	D3	D4	D5	D6	D7
6	0FECA	-	80	8	04	FF	00	FF	E0	01	FF	FF

Figure 5. The Example of DM1 Message

## 1.6. Math Function Block

### 1.6.1. Description

There are five mathematical function blocks that allow the user to define basic algorithms. A math function block can take up to six input signals. Each input is then scaled according to the associated limit and scaling setpoints.

Inputs are converted into percentage value based on the **“Input X Minimum”** and “Input X Maximum” values selected. For additional control the user can also adjust the “Input X Gain” setpoint to increase the resolution of the input data and the min and max values.

A mathematical function block includes three selectable functions, in which each implements equation  $A \text{ operator } B$ , where A and B are function inputs and operator is function selected with a setpoint **“Math Function X”**. Setpoint options are presented in Table 16. The functions are connected together, so that result of the preceding function goes into Input A of the next function. Thus, Function 1 has both Input A and Input B selectable with setpoints, where Functions 2 to 4 have only Input B selectable. Input is selected by setting **“Function X Input Y Source”** and **“Function X Input Y Number”**. If **“Function X Input B Source”** is set to 0 ‘Control not used’ signal goes through function unchanged.

$$\text{Math Block Output} = \left( \left( (A1 \text{ op1 } B1) \text{ op2 } B2 \right) \text{ op3 } B3 \right) \text{ op4 } B4$$

Table 16. Math function X Operator Options

0	=, True when InA equals InB
1	!=, True when InA not equal InB
2	>, True when InA greater than InB
3	>=, True when InA greater than or equal InB
4	<, True when InA less than InB
5	<=, True when InA less than or equal InB
6	OR, True when InA or InB is True
7	AND, True when InA and InB are True
8	XOR, True when either InA or InB is True, but not both
9	+, Result = InA plus InB
10	-, Result = InA minus InB
11	x, Result = InA times InB
12	/, Result = InA divided by InB
13	MIN, Result = Smallest of InA and InB
14	MAX, Result = Largest of InA and InB

For logic operations (6, 7, and 8) scaled input greater than or equal to 1 is treated as TRUE. For logic operations (0 to 8), the result of the function will always be 0 (FALSE) or 1 (TRUE). For the arithmetic functions (9 to 14), it is recommended to scale the data such that the resulting operation will not exceed full scale (0 to 100%) and saturate the output result.

When dividing, a zero divider will always result in a 100% output value for the associated function.

Lastly the resulting mathematical calculation, presented as a percentage value, can be scaled into the appropriate physical units using the **“Math Output Minimum Range”** and **“Math Output Maximum Range”** setpoints. These values are also used as the limits when the Math Function is selected as the input source for another function block.

### 1.6.2. Example

This example shows the Math Function Block configured to provide a 4x times the input. There are multiple ways to configure Math Block to do it. One of them is shown below.

SP Math Enabled	1	True	SP Input 3 Source	3	Lookup Table
SP Math Output Minimum Range	0.00		SP Input 3 Number	5	
SP Math Output Maximum Range	100.00		SP Input 3 Minimum	0.00	
SP Input 1 Source	3	Lookup Table	SP Input 3 Maximum	100.00	
SP Input 1 Number	5		SP Input 3 Gain	1.00	
SP Input 1 Minimum	0.00		SP Input 4 Source	3	Lookup Table
SP Input 1 Maximum	100.00		SP Input 4 Number	5	
SP Input 1 Gain	1.00		SP Input 4 Minimum	0.00	
SP Input 2 Source	3	Lookup Table	SP Input 4 Maximum	100.00	
SP Input 2 Number	5		SP Input 4 Gain	1.00	
SP Input 2 Minimum	0.00		SP Math Function 1	9	+, Result = InA plus InB
SP Input 2 Maximum	100.00		SP Math Function 2	9	+, Result = InA plus InB
SP Input 2 Gain	1.00		SP Math Function 3	9	+, Result = InA plus InB

Figure 6. Math Configuration

As an input source the Lookup Table in Time Response mode is used. It ramps the data from 0 to 20 within 5 seconds, thus the Math Output is ranging from 0 to 80. The Math output is on the right with a scale of 10 per 1 square. On the left side there is the LUT output with a scale of 2 per 1 square.

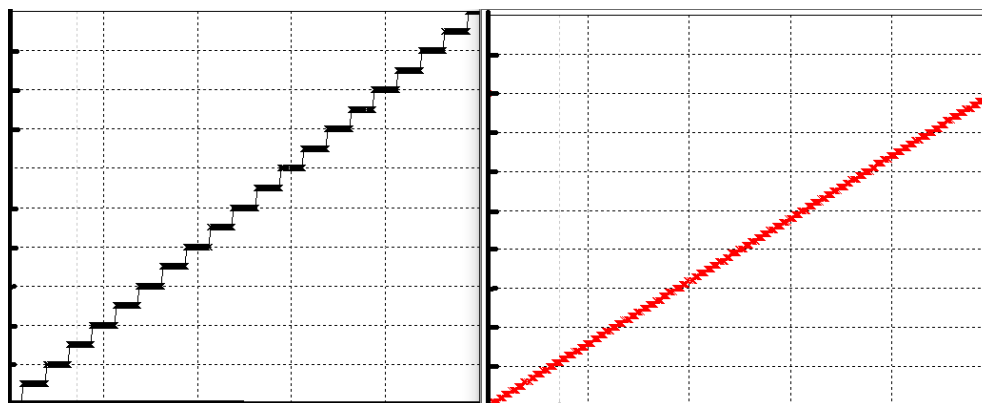


Figure 7. The Math Function Block Output

## 1.7. Conditional Block

### 1.7.1. Description

The Conditional Block compares up to four different input sources with different logical or relational operators. The result of each block can therefore only be true (1) or false (0). Figure 8 demonstrates the connections between all parameters.

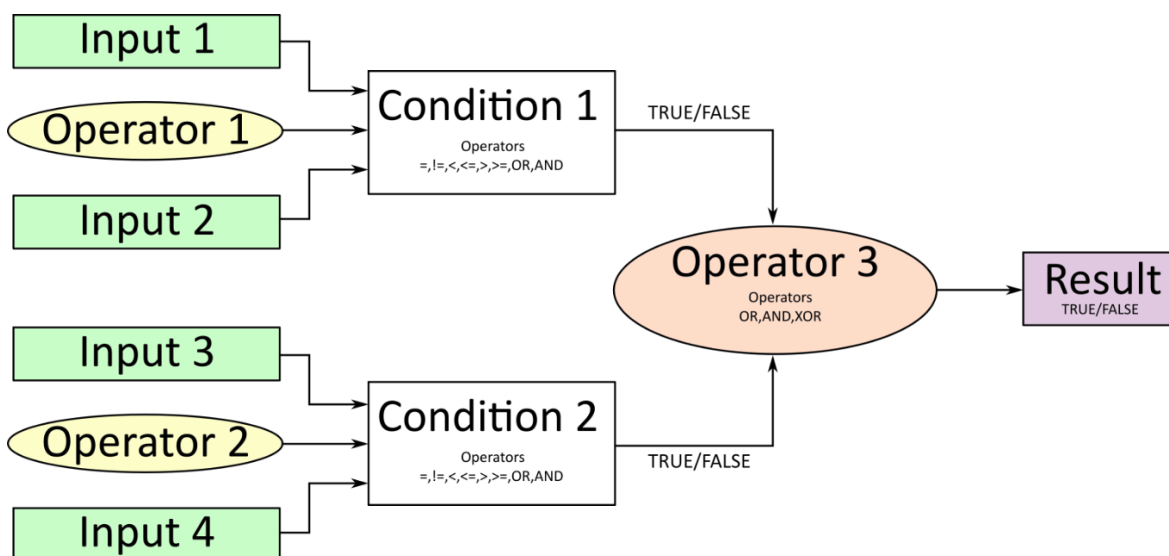


Figure 8: Conditional Block Diagram

Each Conditional Block offers two conditions. Both compare two inputs, which can hold a logical value or an integer value. The output of the conditions can only be true or false and will be compared by Operator 3 with a logical operator. This comparison is the result of the Conditional Block and can control any output source.

Value of each source will then be compared to each other with an operator of Table 17. If no source is selected, the output value of an Input will be zero.

Table 17. Input Operator Options

Value	Meaning
0	==, True when Argument 1 is equal to Argument 2
1	!=, True when Argument 1 is not equal to Argument 2
2	>, True when Argument 1 is greater than Argument 2
3	>=, True when Argument 1 is greater than Argument 2
4	<, True when Argument 1 is less than Argument 2
5	<=, True when Argument 1 is less than or equal Argument 2
6	OR, True when Argument 1 or Argument 2 is True
7	AND, True when Argument 1 and Argument 2 are True

Operator 1 and Operator 2 are configured to OR by default. The table above cannot be used for comparing the conditions because they can only be compared with logical operators, which are listed in Table 18.

Table 18. Condition Operator Options

Value	Meaning
0	OR, True when Argument 1 or Argument 2 is True
1	AND, True when Argument 1 and Argument 2 are True
2	XOR, True when Argument 1 is not equal to Argument 2

If only one condition is used, it is to make sure that Operator 3 is set to OR so that the result is based solely on the condition which has been chosen.

### 1.7.2. Example

This example shows the Conditional Logic Block configured to set the output to 1, True if the input data is more than 50. The configuration is shown below.

SP Conditional Block Enable	1 Enabled
SP Condition 1 Argument 1 Source	3 Lookup Table
SP Condition 1 Argument 1 Number	2
SP Condition 1 Argument 2 Source	8 Control Constant Data
SP Condition 1 Argument 2 Number	3
SP Condition 1 Operator (Argument 1/2)	2 >, True When Arg1 Greater Than Arg2
SP Condition 2 Argument 1 Source	0 Control Not Used
SP Condition 2 Argument 1 Number	Parameter not used with current Control Source selected
SP Condition 2 Argument 2 Source	0 Control Not Used
SP Condition 2 Argument 2 Number	Parameter not used with current Control Source selected
SP Condition 2 Operator (Argument 1/2)	0 ==, True When Arg1 Equal to Arg2
SP Conditional Result Operator	0 OR

As a control source, the Lookup Table output is used. The LUT is program to ramp the output from 0 to 100 and it is shown on the left of the picture below. The Conditional logic output is shown on the right side of the figure.

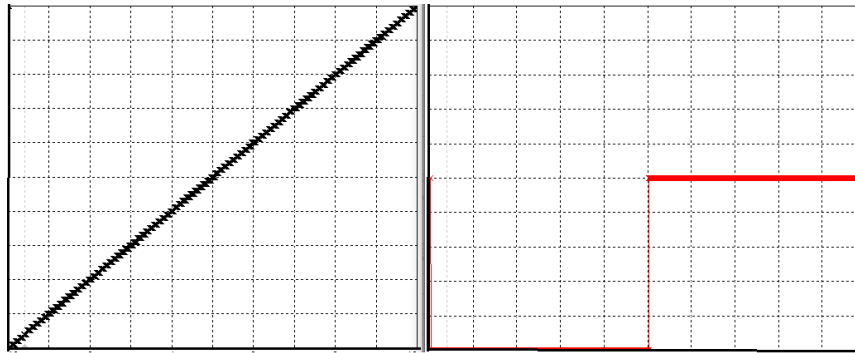


Figure 9. The conditional Logic Block's Output

## 1.8. Set / Reset Latch Function Block

Set-Reset Block consists of only 2 control sources: Reset Source and Set Source. The purpose of these blocks is to simulate a modified latching function in which the 'Reset Signal' has more precedence. The 'latching' function works as per the Table 19 below.

Table 19. Set-Reset Function block operation

'Set Signal'	'Reset Signal'	'Set-Reset Block Output' (Initial State: OFF)
OFF	OFF	Latched State
OFF	ON	OFF
ON	OFF	ON
ON	ON	OFF

The Reset and Set sources have associated with them a minimum and maximum threshold values which determine the ON and OFF state. For the Reset Source are Reset Minimum Threshold and Reset Maximum Threshold. Similarly, for the Set Source are Set Minimum Threshold and Set Maximum Threshold. These setpoints also allow to have a dead band in between ON/OFF states and they are in terms of percentage of input selected.

As seen in Table 19 above, the 'Reset Signal' has more precedence over the 'Set Signal' - if the state of 'Reset Signal' is ON, the state of 'Set-Reset Block Output' will be OFF. To create an ON state in 'Set-Reset Block Output' the state of 'Reset Signal' must be OFF while the state of 'Set Signal' is ON. In this case, the state of 'Set-Reset Block Output' will remain ON even if 'Set Signal' turns OFF as long as 'Reset Signal' remains OFF. As soon as the 'Reset Signal' turns ON the 'Set-Reset Block Output' will turn OFF regardless of the state of 'Set Signal'.

## 1.9. Lookup Table Function Block

### 1.9.1. Description

Lookup Tables are used to give output response up to 10 slopes per input. If more than 10 slopes are required, A Programmable Logic Block can be used to combine up to three tables to get 30 slopes as described in Section 1.10.

Lookup tables have two differing modes defined by “**X-Axis Type**” setpoint, given in Table 20. Option ‘0 – *Data Response*’ is the normal mode where block input signal is selected with the “**X-Axis Source**” and “**X-Axis Number**” setpoints and X values present directly input signal values. With option ‘1 – *Time Response*’ the input signal is time and X values present time in milliseconds. And selected input signal is used as digital enable.

Table 20. X-Axis Type Options

0	Data Response
1	Time Response

The “**Auto Repeat**” setpoint determines either lookup table’s output cycle is repeated after reaching the last configured “**Point Y#**”. This setpoint is used only if “**X-Axis Type**” is set to ‘1 – *Time Response*’, and doesn’t affect the output in if it set to ‘0 - *Data Response*’ mode.

The slopes are defined with (x, y) points and associated point response. X value presents input signal value and Y value corresponding Lookup Table output value. “**Response #**” setpoint defines type of the slope from preceding point to the point in question. Response options are given in Table 21. ‘*Ramp To*’ gives a linearized slope between points, whereas ‘*Jump to*’ gives a point-to-point response, where any input value between XN-1 and XN will result Lookup Table output being YN. “**Response 0**” is always ‘*Jump To*’ and cannot be edited. Choosing ‘*Ignored*’ response causes associated point and all the following points to be ignored.

Table 21. Response # Options

0	Ignore
1	Ramp To
2	Jump To

The X-Axis is constraint to be in rising order, thus value of the next index is greater than or equal to preceding one. Therefore, when adjusting the X-Axis data, it is recommended that X10 is changed first, then lower indexes in descending order.

$$X_{min} \leq X_0 \leq X_1 \leq X_2 \leq X_3 \leq X_4 \leq X_5 \leq X_6 \leq X_7 \leq X_8 \leq X_9 \leq X_{10} \leq X_{max}$$

The Y-Axis has no constraints on the data it presents, thus inverse, decreasing, increasing or other response can be easily established. The Smallest of the Y-Axis values is used as Lookup Table output min and the largest of the Y-Axis values is used as Lookup Table output max (i.e. used as Xmin and Xmax values in linear calculation.). Ignored points are not considered for min and max values.

### 1.9.2. Example

This example is designed to represent the Lookup Table function block in various modes. First lookup table is configured as Time Response with all responses set to ‘1 – *Ramp To*’. The “**X-Axis Type**” is set to ‘1 – *Time Response*’, and the “**Auto Repeat**” setpoint is set to ‘1 – *True*’. The

control source is set to the 'Control Constant Data' with a value of 1 to be constantly active. The configuration of other setpoints is shown below.

			SP Point X0	0.000	ms	SP Point Y0	0.000
SP Response 1	1	Ramp To	SP Point X1	1000.000	ms	SP Point Y1	10.000
SP Response 2	1	Ramp To	SP Point X2	1000.000	ms	SP Point Y2	20.000
SP Response 3	1	Ramp To	SP Point X3	1000.000	ms	SP Point Y3	30.000
SP Response 4	1	Ramp To	SP Point X4	1000.000	ms	SP Point Y4	40.000
SP Response 5	1	Ramp To	SP Point X5	1000.000	ms	SP Point Y5	50.000
SP Response 6	1	Ramp To	SP Point X6	1000.000	ms	SP Point Y6	60.000
SP Response 7	1	Ramp To	SP Point X7	1000.000	ms	SP Point Y7	70.000
SP Response 8	1	Ramp To	SP Point X8	1000.000	ms	SP Point Y8	80.000
SP Response 9	1	Ramp To	SP Point X9	1000.000	ms	SP Point Y9	90.000
SP Response 10	1	Ramp To	SP Point X10	1000.000	ms	SP Point Y10	100.000

Figure 10. First Lookup Table Response Configuration

The second lookup table is configured to provide output in data response mode and controlled by the first lookup table. The rest of configuration is shown on the Figure 11 below.

			SP Point X0	0.000		SP Point Y0	0.000
SP Response 1	2	Jump To	SP Point X1	10.000		SP Point Y1	10.000
SP Response 2	2	Jump To	SP Point X2	20.000		SP Point Y2	20.000
SP Response 3	2	Jump To	SP Point X3	30.000		SP Point Y3	30.000
SP Response 4	2	Jump To	SP Point X4	40.000		SP Point Y4	40.000
SP Response 5	1	Ramp To	SP Point X5	50.000		SP Point Y5	50.000
SP Response 6	1	Ramp To	SP Point X6	60.000		SP Point Y6	60.000
SP Response 7	1	Ramp To	SP Point X7	70.000		SP Point Y7	70.000
SP Response 8	1	Ramp To	SP Point X8	80.000		SP Point Y8	80.000
SP Response 9	1	Ramp To	SP Point X9	90.000		SP Point Y9	90.000
SP Response 10	1	Ramp To	SP Point X10	100.000		SP Point Y10	100.000

Figure 11. Second Lookup Table Response Configuration

With such a configuration the second lookup table will jump from 0 to 40 and then ramp to 100. The graphical representation of lookup tables output is shown below. On the left graph the time response lookup table, and on the left is a controlled table. The X axis represents the time with a resolution of 1 second per square. The Y axis is the LUT output with a resolution of 10 per square.

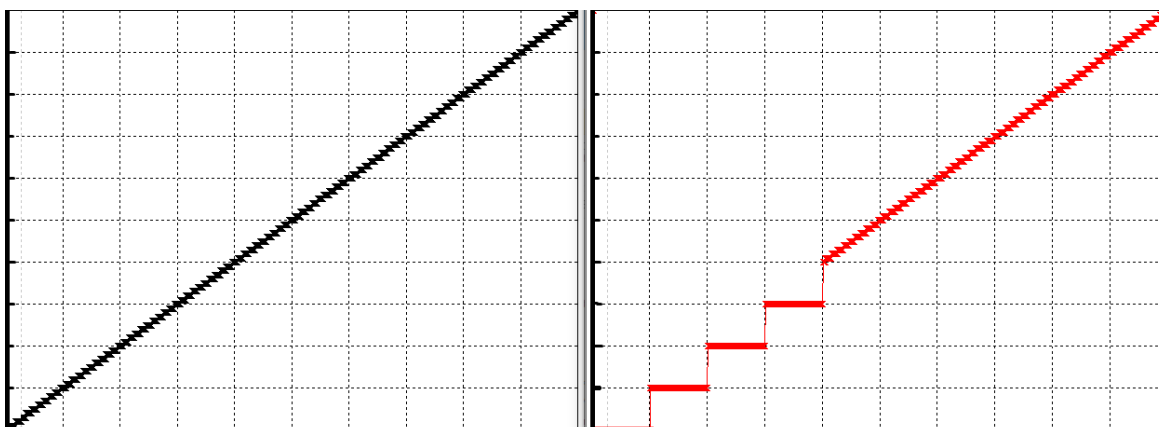


Figure 12. Graphical Representation of the Lookup Table Example

## 1.10. Programmable Logic Function Block

### 1.10.1. Description

The Programmable Logic Function Block is a powerful tool. Programmable Logic can be linked to up to three Lookup Tables, any of which would be selected only under given conditions. Thus, the output of a Programmable Logic at any given time will be the output of the Lookup Table selected by the defined logic. Therefore, up to three different responses to the same input, or three different responses to different inputs, can become the input to another function block.

In order to enable any one of the Programmable Logic blocks, the **“Logic Enabled”** setpoint must be set to *‘True’*. By default, all Logic blocks are disabled.

The three associated tables are selected by setting **“Table Number X”** setpoint to desired Lookup Table number, for example selecting 1 would set Lookup Table 1 as TableX.

For each TableX there are three conditions that define the logic to select the associated Lookup Table as Logic output. Each condition implements function *Argument1 Operator Argument2* where Operator is logical operator defined by setpoint **“Table X – Condition Y Operator”**. Setpoint options are listed in Table 22. Condition arguments are selected with **“Table X – Condition Y Argument Z Source”** and **“Table X – Condition Y Argument Z Number”** setpoints. If *‘0 – Control not Used’* option is selected as **“Table x – Condition Y Argument Z Source”** the argument is interpreted as 0.

Table 22. Table X – Condition Y Operator Options

0	=, Equal
1	!=, Not Equal
2	>, Greater Than
3	>=, Greater Than or Equal
4	<, Less Than
5	<=, Less Than or Equal

The three conditions are evaluated and if the result satisfies logical operation defined with **“Logical Operator X”** setpoint, given in Table 23, the associated Lookup Table is selected as output of the Logical block. Option *‘0 – Default Table’* selects associated Lookup Table in all conditions.

Table 23. Table X – Conditions Logical Operator Options

0	Default Table (Table1)
1	Cnd1 And Cnd2 And Cnd3
2	Cnd1 Or Cnd2 Or Cnd3
3	(Cnd1 And Cnd2) Or Cnd3
4	(Cnd1 Or Cnd2) And Cnd3

The three logical operations are evaluated in order and the first to satisfy gets selected, thus if Table1 logical operation is satisfied, the Lookup Table associated with Table1 gets selected regardless of two other logical operations. In addition, if none of the logical operations is satisfied the Lookup Table associated with Table1 gets selected.



### 1.10.2. Example

This example will show how to use 4 Lookup Tables by using the simplest configuration of Programmable Logic Block (PLB). One LUT is configured to jump from 0 to 100 with a step of 10. The second table ramps the output from 0 to 100 and the third one provides a constant output of 50. The last table configured to control previous tables. The PLB uses table 1 if fourth table's output is below 40, table 2 if it is greater than 60, and table 3 otherwise. The configuration of the Programmable Logic Block is shown below.

SP Table Number 1	1	Lookup Table 1	SP Table Number 2	4	Lookup Table 4
SP Logical Operator 1	2	Cnd1 Or Cnd2 Or Cnd3	SP Logical Operator 2	2	Cnd1 Or Cnd2 Or Cnd3
SP Table 1 - Condition 1 Argument 1 Source	3	Lookup Table	SP Table 2 - Condition 1 Argument 1 Source	3	Lookup Table
SP Table 1 - Condition 1 Argument 1 Number	2		SP Table 2 - Condition 1 Argument 1 Number	2	
SP Table 1 - Condition 1 Argument 2 Source	8	Control Constant Data	SP Table 2 - Condition 1 Argument 2 Source	8	Control Constant Data
SP Table 1 - Condition 1 Argument 2 Number	3		SP Table 2 - Condition 1 Argument 2 Number	4	
SP Table 1 - Condition 1 Operator	5	<=, Less Than or Equal	SP Table 2 - Condition 1 Operator	3	>=, Greater Than or Equal
SP Table 1 - Condition 2 Argument 1 Source	0	Control Not Used	SP Table 2 - Condition 2 Argument 1 Source	0	Control Not Used
SP Table 1 - Condition 2 Argument 1 Number		Parameter not used with	SP Table 2 - Condition 2 Argument 1 Number		Parameter not used with current
SP Table 1 - Condition 2 Argument 2 Source	0	Control Not Used	SP Table 2 - Condition 2 Argument 2 Source	0	Control Not Used
SP Table 1 - Condition 2 Argument 2 Number		Parameter not used with	SP Table 2 - Condition 2 Argument 2 Number		Parameter not used with current
SP Table 1 - Condition 2 Operator		Parameter not used with	SP Table 2 - Condition 2 Operator		Parameter not used with current
SP Table 1 - Condition 3 Argument 1 Source	0	Control Not Used	SP Table 2 - Condition 3 Argument 1 Source	0	Control Not Used
SP Table 1 - Condition 3 Argument 1 Number		Parameter not used with	SP Table 2 - Condition 3 Argument 1 Number		Parameter not used with current
SP Table 1 - Condition 3 Argument 2 Source	0	Control Not Used	SP Table 2 - Condition 3 Argument 2 Source	0	Control Not Used
SP Table 1 - Condition 3 Argument 2 Number		Parameter not used with	SP Table 2 - Condition 3 Argument 2 Number		Parameter not used with current
SP Table 1 - Condition 3 Operator		Parameter not used with	SP Table 2 - Condition 3 Operator		Parameter not used with current
SP Table Number 3	3	Lookup Table 3			
SP Logical Operator 3	0	Default Table			

Figure 13. Programmable Logic Block Configuration

With the current configuration the PLB will ramp from 0 to 40, then stay at 50, and after will jump from 60 to 100. The picture below captures the PLB output. On the left, the Lookup Table output and to the left there is a PLB corresponding output.

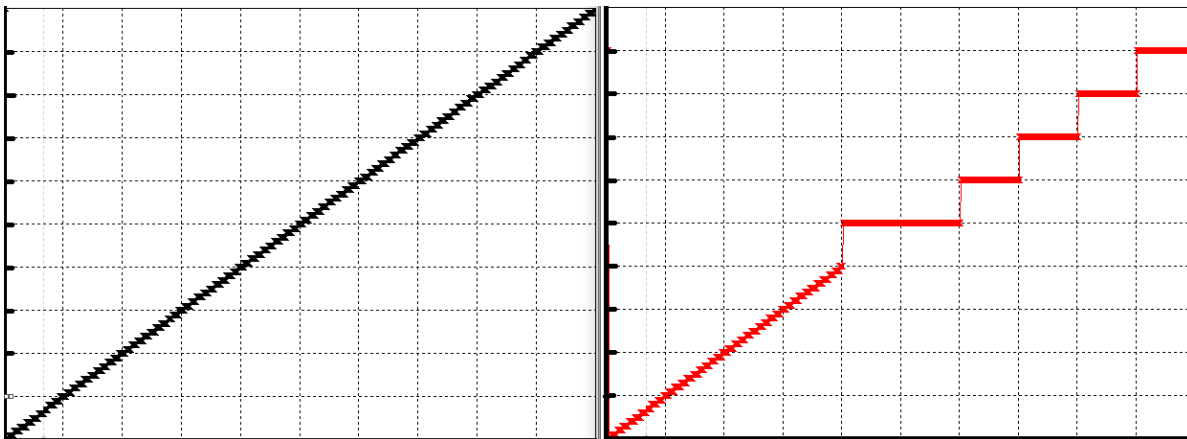


Figure 14. The Programmable Logic Block Output

### 1.11. Constant Data

The Constant Data Block contains 2 fixed (False/True) and 13 configurable constant data setpoints which can be used as a control source for other functions. While they are available as a control

source to all functions, it is recommended not to use constant data as a control source for the Set-Reset Latch Block.

## 1.12. DTC React

DTC React is a function block that allows the ECU to receive and process the DM1 messages. There are 16 separated function blocks that can capture up to 16 different DM1 messages. Each DTC React has two mandatory and 2 optional parameters. The mandatory parameters are the SPN and FMI. If only these parameters are used, the output will be set to high if the DM1 message with the combination of selected SPN and FMI. The state will remain high for five seconds and will be set if the DM1 message will be received again.

Among optional parameters there are lamp setting and the source address. To enable them, the “**Lamp Used to Trigger Reaction**” and “**Source Address Used to Trigger Reaction**” should be set to 1, *True*. In this case, beside SPN and FMI the ECU will compare the Lamp Setting and/or Source Address of the received message.

The exceptions are the following SPN:

- SPN 1213 and Lamp Status 0x40;
- SPN623 and Lamp Status 0x10;
- SPN624 and Lamp Status 0x04;
- SPN624 and Lamp Status 0x01;

In case if the SPNs above are chosen, the DTC React function block will set the output to HIGH if SPN and Lamp Status matches even if FMI doesn't match. However, if the “**Source Address Used to Trigger Reaction**” is set to 1, *True* and selected address doesn't match, the DTC React output will be set to FALSE.

## 1.13. CAN Transmit Message Function Block

The CAN Transmit function block is used to send any output from another function block (i.e. input, CAN receive) to the J1939 network. The AX103000 ECU has eleven CAN Transmit Messages and each message has four completely user defined signals.

### 1.13.1. CAN Transmit Message Setpoints

Each CAN Transmit Message setpoint group includes setpoints that effect the whole message and are thus mutual for all signals of the message. These setpoints are presented in this section. The setpoints that configure an individual signal are presented in next section.

The “**Transmit PGN**” setpoint sets PGN used with the message. **User should be familiar with the SAE J1939 standard, and select values for PGN/SPN combinations as appropriate from section J1939/71.**

“**Repetition Rate**” setpoint defines the interval used to send the message to the J1939 network. If the “**Repetition Rate**” is set to zero, the message is disabled unless it shares its PGN with another message. In case of a shared PGN repetition rate of the LOWEST numbered message are used to send the message ‘bundle’.



At power up, transmitted message will not be broadcasted until after a 5 second delay. This is done to prevent any power up or initialization conditions from creating problems on the network.

By default, all messages are sent on Proprietary B PGNs as broadcast messages. Thus “**Transmit Message Priority**” is always initialized to 6 (low priority) and the “**Destination Address**” setpoint is not used. This setpoint is only valid when a PDU1 PGN has been selected, and it can be set either to the Global Address (0xFF) for broadcasts, or sent to a specific address as setup by the user.

### 1.13.2. CAN Transmit Signal Setpoints

Each CAN transmit message has four associated signals, which define data inside the Transmit message. “**Control Source**” setpoint together with “**Control Number**” setpoint define the signal source of the message. “**Control Source**” and “**Control Number**” options are listed in Table 24. Setting “**Control Source**” to ‘*Control Not Used*’ disables the signal.

“**Transmit Data Size**” setpoint determines how many bits signal reserves from the message. “**Transmit Data Index in Array**” determines in which of 8 bytes of the CAN message LSB of the signal is located. Similarly “**Transmit Bit Index in Byte**” determines in which of 8 bits of a byte the LSB is located. These setpoints are freely configurable, thus **it is the user’s responsibility to ensure that signals do not overlap and mask each other.**

“**Transmit Data Resolution**” setpoint determines the scaling done on the signal data before it is sent to the bus. “**Transmit data Offset**” setpoint determines the value that is subtracted from the signal data before it is scaled. Offset and Resolution are interpreted in units of the selected source signal.

### 1.14. CAN Receive Function Block

The CAN Receive function block is designed to take any SPN from the J1939 network, and use it as an input to another function block (i.e. Outputs).

“**CAN Interface**” setpoint is used to define from which of the two CAN Interfaces the message in question is received.

The “**Receive Message Enabled**” is the most important setpoint associated with this function block and it should be selected first. Changing it will result in other setpoints being enabled/disabled as appropriate. By default ALL receive messages are disabled.

Once a message has been enabled, a Lost Communication fault will be flagged if that message is not received off the bud within the “**Receive Message Timeout**” period. This could trigger a Lost Communication event as described in section 1.5. In order to avoid timeouts on a heavily saturated network, it is recommended to set the period at least three times longer than the expected update

rate. To disable the timeout feature, simply set this value to zero, in which case the received message will never trigger a Lost Communication fault.

By default, all control messages are expected to be sent to the AX103000 on Proprietary B PGNs. However, should a PDU1 message be selected, the AX103000 can be setup to receive it from any ECU by setting the “**PGN From Specific Address**” to False (0x00). If a specific address is selected instead, then any other ECU data on the PGN will be ignored.

The “**Receive Data Size**”, “**Receive Data Index in Array (LSB)**”, “**Receive Bit Index in Byte (LSB)**”, “**Receive Resolution**” and “**Receive Offset**” can all be used to map any SPN supported by the J1939 standard to the output data of the Received function block.

As mentioned earlier, a CAN receive function clock can be selected as the source of the control input for the output function blocks. When this is case, the “**Received Data Min (Off Threshold)**” and “**Received Data Max (On Threshold)**” setpoints determine the minimum and maximum values of the control signal. As the names imply, they are also used as the On/Off thresholds for digital output types. These values are in whatever units the data is AFTER the resolution and offset is applied to CAN receive signal.

The AX103000 supports up to nine unique CAN Receive Messages. Defaults setpoint values are listed in section 4.12.

### 1.15. Available Control Sources

Many of the Function Blocks have selectable input signals, which are determined with “**[Name] Source**” and “**[Name] Number**” setpoints. Together, these setpoints uniquely select how the I/O of the various function blocks are linked together. “**[Name] Source**” setpoint determines the type of the source and “**[Name] Number**” selects the actual source if there is more than one of the same type. Available “**[Name] Source**” options and associated “**[Name] Number**” ranges are listed in Table 24. All sources, except “CAN message reception timeout”, are available for all blocks, including output control blocks and CAN Transmit messages. Thought input Sources are freely selectable, not all options would make sense for any particular input, and it is up to the user to program the controller in a logical and functional manner.

Table 24 – Available Control Sources and Numbers

<b>Control Source</b>	<b>Number Range</b>	<b>Notes</b>
<i>0: Control Not Used</i>	N/A	When this is selected, it disables all other setpoints associated with the signal in question.
<i>1: Received CAN Message</i>	1 to 10	
<i>2: Universal Input Measured</i>	1 to 3	
<i>6: Lookup Table</i>	1 to 10	
<i>7: Programmable Logic</i>	1 to 4	
<i>8: Math Logic</i>	1 to 5	
<i>9: Conditional Logic</i>	1 to 10	
<i>10: Set-Reset Latch</i>	1 to 5	
<i>11: Constant Data</i>	1 to 15	
<i>12: Output Target Value</i>	1 to 2	

13: Output Current Feedback	1 to 2	Measured Feedback current from the proportional output in mA, used in Output Diagnostics.
14: Power Supply Measured	0 to 255	Measured power supply value in Volts. The Parameter sets the threshold in Volts to compare with.
15: Processor Temperature Measured	0 to 255	Measured processor temperature in °C. The Parameter sets the threshold in Celcius to compare with.
16: CAN Reception Timeout	1 to 10	
17: DTC React	1 to 16	

If a non-digital signal is selected to drive a digital input, the signal is interpreted to be OFF at or below the minimum of selected source and ON at or above the maximum of the selected source, and it will not change in between those points. Thus analog to digital interpretation has a built in hysteresis defined by minimum and maximum of the selected source, as shown in Figure 15. For example Universal Input signal is interpreted to be ON at or above “Maximum Range” and OFF at or below “Minimum Range”.

Control Constant Data has no unit nor minimum and maximum assigned to it, thus user has to assign appropriate constant values according to intended use.

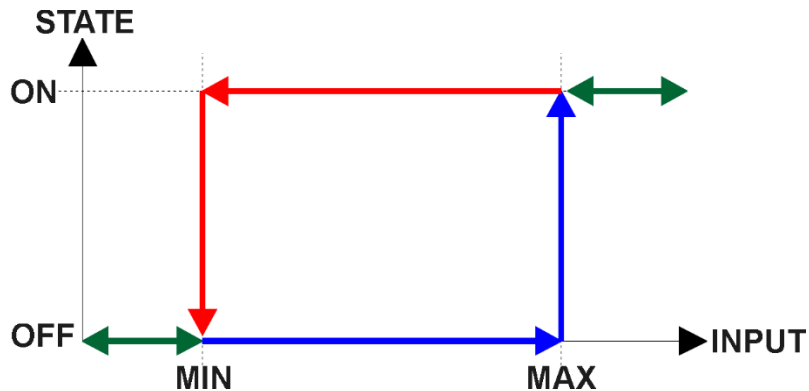


Figure 15 – Analog source to Digital input

### 1.16. Selectable Voltage Reference

The ECU can be configured to provide either 5V or 8V voltage reference. To enable Voltage reference the “**Enable Voltage Reference**” should be set to 1, True. Then, the selection of a voltage output level is available via configuring “**Voltage Reference Output Type**”. In case if a short circuit, the output will shut off and try to reconnect after 1s.

## 2. INSTALLATION INSTRUCTIONS

### 2.1. Dimensions and Pinout

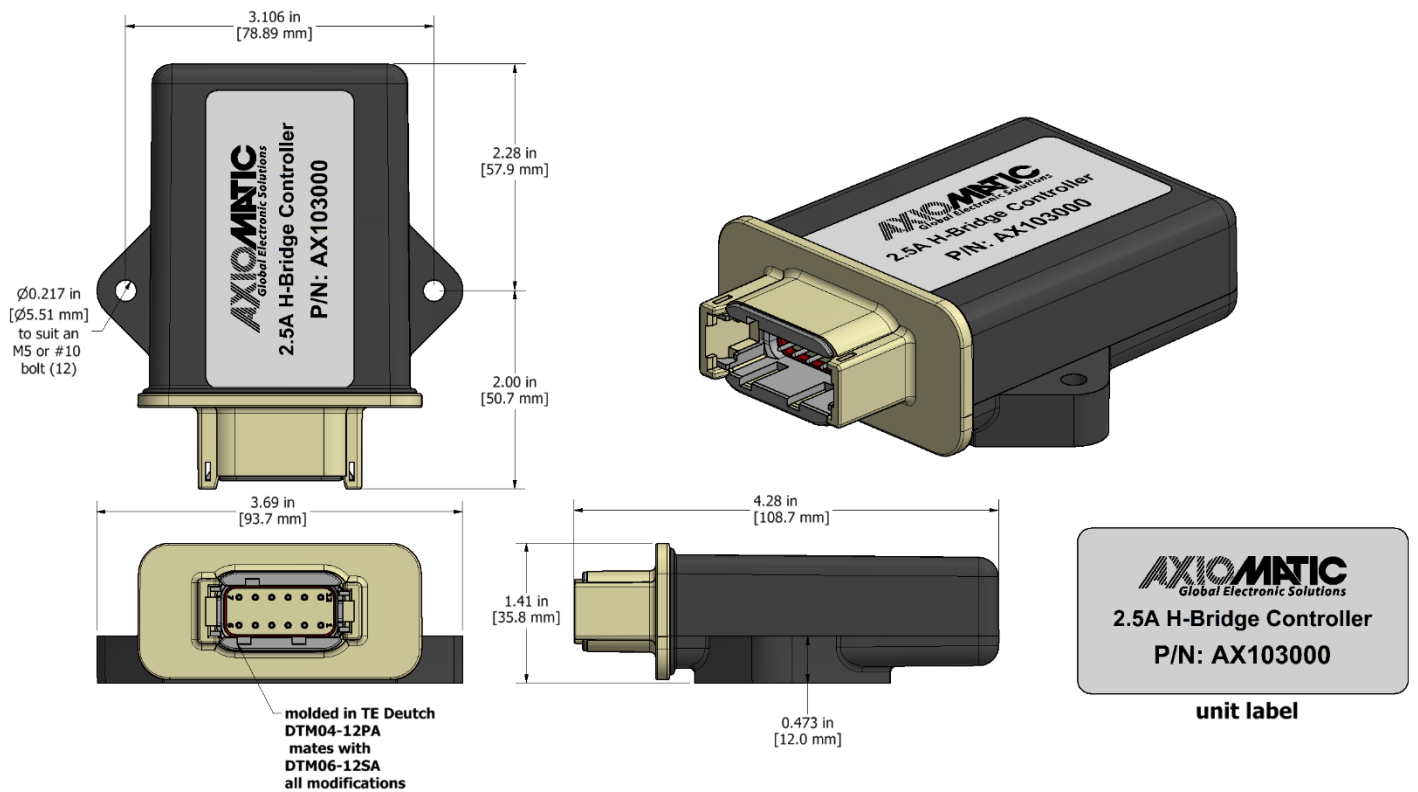


Figure 16 – AX103000 Dimensional Drawing

Table 25 – AX103000 Connector Pinout

Pin #	Description
1	BATT+
2	+5V or +8V Return
3	+5V or +8V
4	Input 1
5	CAN_L
6	CAN_SH
7	CAN_H
8	Input 3
9	Input 2
10	Output 1
11	Output 2
12	BATT-

### 3. OVERVIEW OF J1939 FEATURES

---

The software was designed to provide flexibility to the user with respect to messages sent from the ECU by providing:

- Configurable ECU Instance in the NAME (to allow multiple ECUs on the same network)
- Configurable Input Parameters
- Configurable PGN and Data Parameters
- Configurable Diagnostic Messaging Parameters, as required
- Diagnostic Log, maintained in non-volatile memory

#### 3.1. Introduction to Supported Messages

The ECU is compliant with the standard SAE J1939, and supports following PGNs from the standard.

##### From J1939-21 – Data Link Layer

- |  |            |          |
|--|------------|----------|
| • Request                                    | 59904      | 0x00EA00 |
| • Acknowledgement                            | 59392      | 0x00E800 |
| • Transport Protocol – Connection Management | 60416      | 0x00EC00 |
| • Transport Protocol – Data Transfer Message | 60160      | 0x00EB00 |
| • Proprietary B                              | from 65280 | 0x00FF00 |
|  | to 65535   | 0x00FFFF |

##### From J1939-73 – Diagnostics

- |  |       |          |
|--|-------|----------|
| • DM1 – Active Diagnostic Trouble Codes                        | 65226 | 0x00FECA |
| • DM2 – Previously Active Diagnostic Trouble Codes             | 65227 | 0x00FECB |
| • DM3 – Diagnostic Data Clear/Reset for Previously Active DTCs | 65228 | 0x00FECC |
| • DM11 – Diagnostic Data Clear/Reset for Active DTCs           | 65235 | 0x00FED3 |

##### From J1939-81 – Network Management

- |                                |       |          |
|--------------------------------|-------|----------|
| • Address Claimed/Cannot Claim | 60928 | 0x00EE00 |
| • Commanded Address            | 65240 | 0x00FED8 |

##### From J1939-71 – Vehicle Application Layer

- |                            |       |          |
|----------------------------|-------|----------|
| • Software Identification  | 65242 | 0x00FEDA |
| • Software Identification  | 65242 | 0x00FEDA |
| • Component Identification | 65259 | 0x00FEEB |

None of the application layer PGNs are supported as part of the default configurations, but they can be selected as desired for transmit function blocks.

Setpoints are accessed using standard Memory Access Protocol (MAP) with proprietary addresses. The Axiomatic Electronic Assistant (EA) allows for quick and easy configuration of the unit over CAN network.

### 3.2. NAME, Address and Software ID

The AX103000 ECU has the following default for the J1939 NAME. The user should refer to the SAE J1939/81 standard for more information on these parameters and their ranges.

Arbitrary Address Capable	Yes
Industry Group	0, Global
Vehicle System Instance	0
Vehicle System	0, Non-specific system
Function	66, I/O Controller
Function Instance	0, Axiomatic AX031200
ECU Instance	0, First Instance
Manufacture Code	162, Axiomatic Technologies
Identity Number	Variable, uniquely assigned during factory programming for each ECU

The ECU Instance is a configurable setpoint associated with the NAME. Changing this value will allow multiple ECUs of this type to be distinguishable from one another when they are connected on the same network.

The default value of the “ECU Address” setpoint is 128 (0x80), which is the preferred starting address for self-configurable ECUs as set by the SAE in J1939 tables B3 and B7. The EA will allow the selection of any address between 0 and 253. ***It is user’s responsibility to select an address that complies with the standard.*** The user must also be aware that since the unit is arbitrary address capable, if another ECU with a higher priority NAME contends for the selected address, the AX103000 will continue select the next highest address until it finds one that it can claim. See J1939/81 for more details about address claiming.

#### ECU Identification Information

PGN 64965		ECU Identification Information		-ECUID
Transmission Repetition Rate:		On request		
Data Length:		Variable		
Extended Data Page:		0		
Data Page:		0		
PDU Format:		253		
PDU Specific:		197 PGN Supporting Information:		
Default Priority:		6		
Parameter Group Number:		64965 (0x00FDC5)		
Start Position	Length	Parameter Name	SP	
			N	
a	Variable	ECU Part Number, Delimiter (ASCII “*”)	290	
			1	
b	Variable	ECU Serial Number, Delimiter (ASCII “*”)	290	
			2	



c	Variable	ECU Location, Delimiter (ASCII “*”)	290 3
d	Variable	ECU Type, Delimiter (ASCII “*”)	290 4
e	Variable	ECU Manufacturer Name, Delimiter (ASCII “*”)	430 4
(a)*(b)*(c)*(d)*(e)			
*			

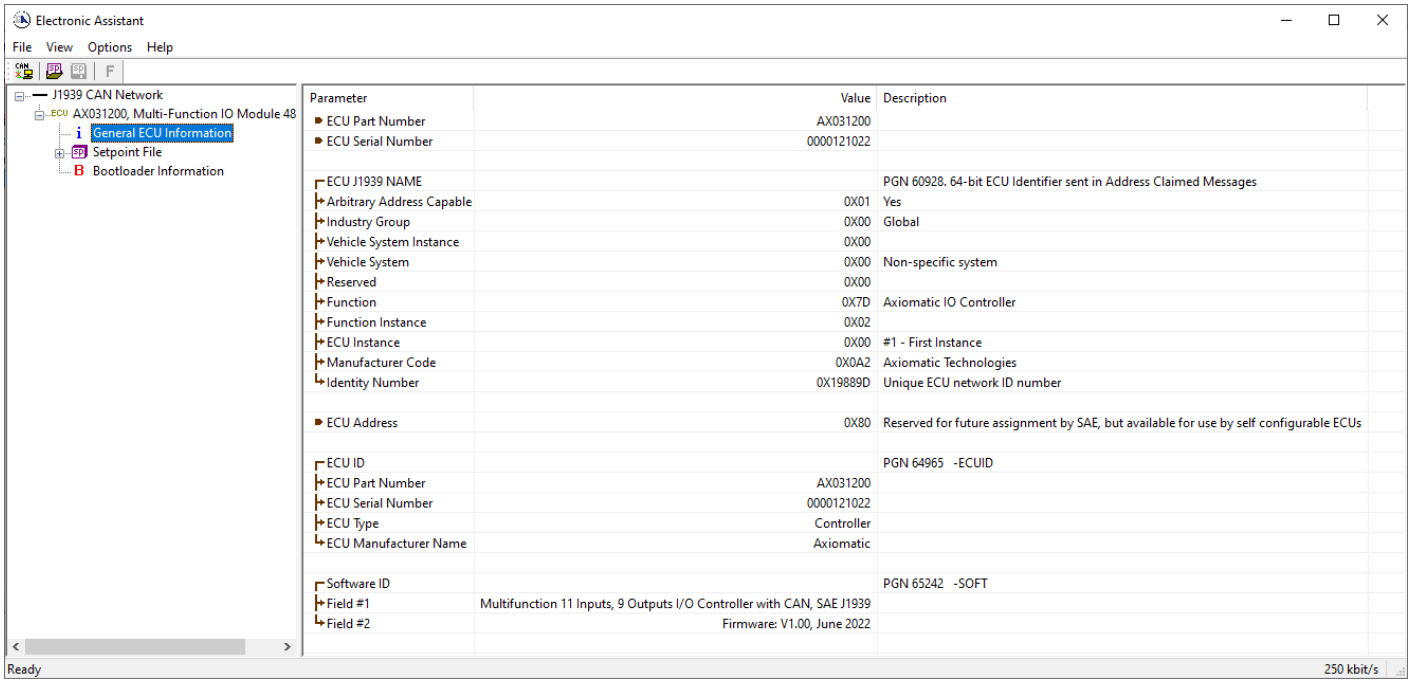


Figure 17 – General ECU Information

## Software Identifier

PGN 65242	Software Identification	- SOFT
Transmission Repetition Rate:	On request	
Data Length:	Variable	
Extended Data Page:	0	
Data Page:	0	
PDU Format:	254	
PDU Specific:	218 PGN Supporting Information:	
Default Priority:	6	
Parameter Group Number:	65242 (0xFEDA)	
Start Position	Length	Parameter Name
1	1 Byte	Number of software identification fields
2-n	Variable	Software identification(s), Delimiter (ASCII “*”)
		SPN
		965
		234

For the AX103000 ECU, Byte 1 is set to 5, and the identification fields are as follows.

**(Part Number)\*(Version)\*(Date)\*(Owner)\*(Description)**

The EA shows all this information in “General ECU Information”, as shown below.

*Note: The information provided in the Software ID is available for any J1939 service tool which supports the PGN -SOFT.*

### Component Identification

PGN 65259		Component Identification	-CI
Transmission Repetition Rate:		On request	
Data Length:		Variable	
Extended Data Page:		0	
Data Page:		0	
PDU Format:		254	
PDU Specific:		235 PGN Supporting Information:	
Default Priority:		6	
Parameter Group Number:		65259 (0x00FEED)	
Start Position	Length	Parameter Name	SPN
a	1-5 Byte	Make, Delimiter (ASCII “*”)	586
b	Variable	Model, Delimiter (ASCII “*”)	587
c	Variable	Serial Number, Delimiter (ASCII “*”)	588
d	Variable	Unit Number (Power Unit), Delimiter (ASCII “*”)	233
(a)*(b)*(c)*(d)*(e)*			

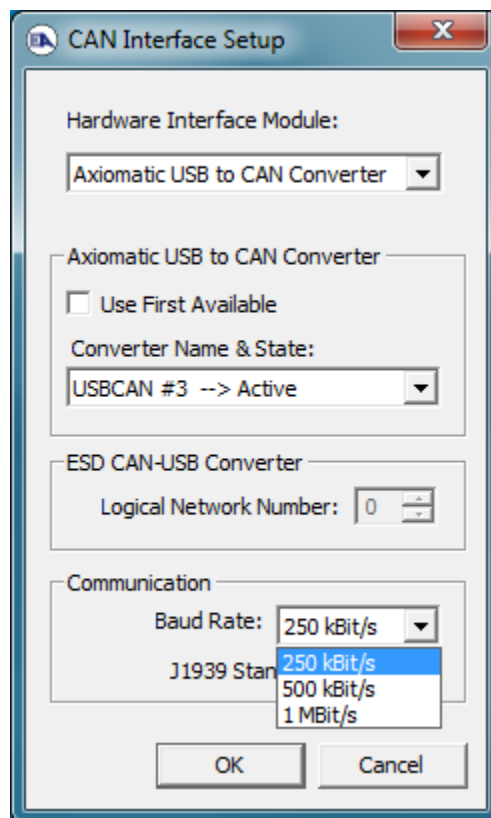
## 4. ECU SETPOINTS ACCESSED WITH AXIOMATIC ELECTRONIC ASSISTANT

---

This section describes in detail each setpoint, and their default and ranges. The setpoints are divided into setpoint groups as they are shown in EA. For more information on how each setpoints, refer to the relevant section in this user manual.

### 4.1. Accessing the ECU Using Axiomatic Electronic Assistant

ECU with P/N AX103000 does not need any specific setup for EA. In order to access the high speed versions the CAN bus Baud Rate needs to be set accordingly. The CAN Interface Setup can be found from “Options” menu in EA. Please refer UMAX07050x **Connecting to the J1939 Bus** section for Axiomatic Electronic Assistant CAN Interface Setup instructions.



### 4.2. J1939 Network Parameters

“ECU Instance Number” and “ECU Address” setpoints and their effect are defined in section 3.2.

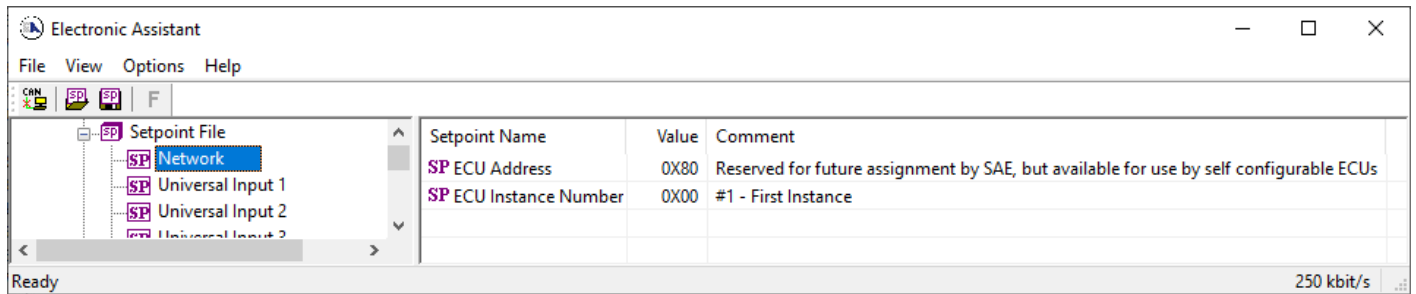


Figure 18 – Screen Capture of J1939 Setpoints

Table 26 – J1939 Network Setpoints

Name	Range	Default	Notes
ECU Address	0x80	0-253	Preferred address for a self-configurable ECU
ECU Instance	0-7	0x00	Per J1939-81

If non-default values for the “**ECU Instance Number**” or “**ECU Address**” are used, they will be mirrored during a setpoint file flashing, and will only take effect once the entire file has been downloaded to the unit. After the setpoint flashing is complete, the unit will claim the new address and/or re-claim the address with the new NAME. If these setpoints are changing, it is recommended to close and re-open the CAN connection on EA after the file is loaded so that only the new NAME and address are showing in the J1939 CAN Network ECU list.

### 4.3. Universal Input Setpoints

The Universal Inputs are defined in section 1.1.

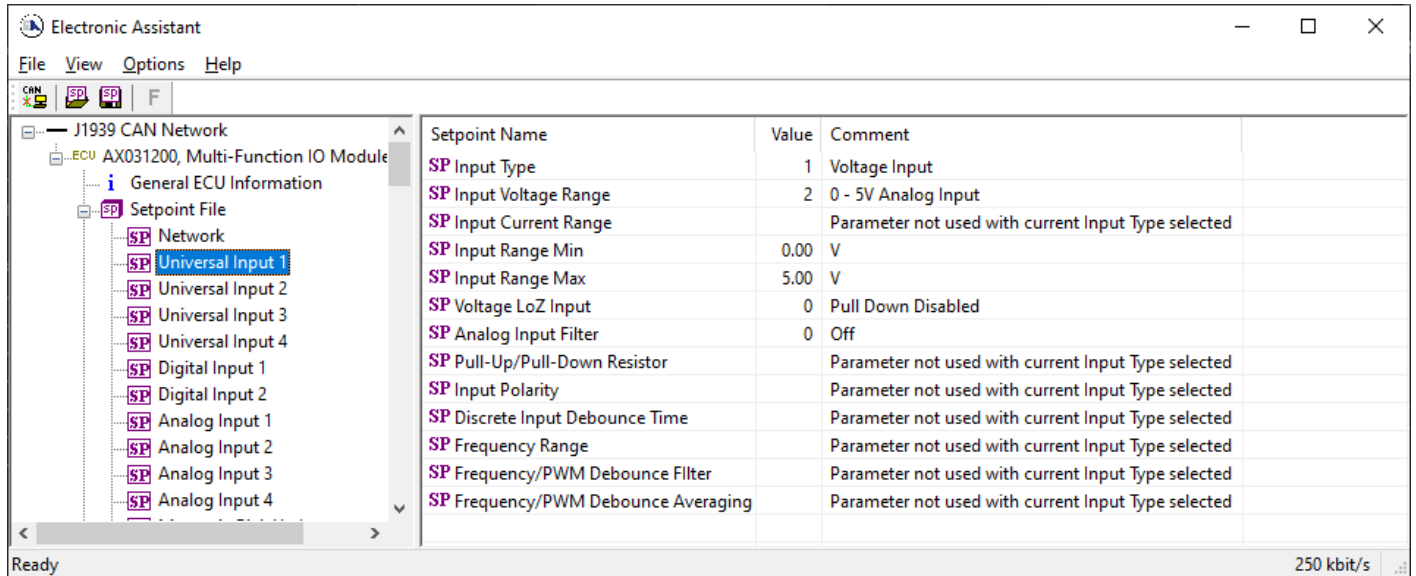


Figure 19 – Screen Capture of Universal Input Setpoints

Table 27 – Universal Input Setpoints

Name	Range	Default	Notes
Input Type	Drop List	Voltage Input	See Section 1.1
Input Voltage Range	Drop List	2, 0-5V Analog Input	See Section 1.1
Input Range Min	0..100	0	See Section 1.1
Input Range Max	0..100	5	See Section 1.1
Voltage LoZ Input	Drop List	0, Pull Down Disabled	See Section 1.1
Analog Input Filter	Drop List	0, Off	See Section 1.1
Pullup/Pulldown Resistor	Drop List	0, No Pull	See Section 1.1
Input Polarity	Drop List	0, Active High	See Section 1.1
Discrete Input Debounce Time	0..60000	50 ms	See Section 1.1
Frequency Range	Read only	1Hz to 10kHz	See Section 1.1
Frequency/PWM Debounce Filter	Drop List	0, No Filter	See Section 1.1
Frequency/PWM Debounce Averaging	Drop List	0, No Averaging	See Section 1.1
Software Filter Type	Drop List	0, Disabled	See Section 1.1.5
Software Filter Constant	0...60000	10	See Section 1.1.5

### 4.4. Proportional Output Setpoints

The Proportional Outputs are defined in sections 1.2.

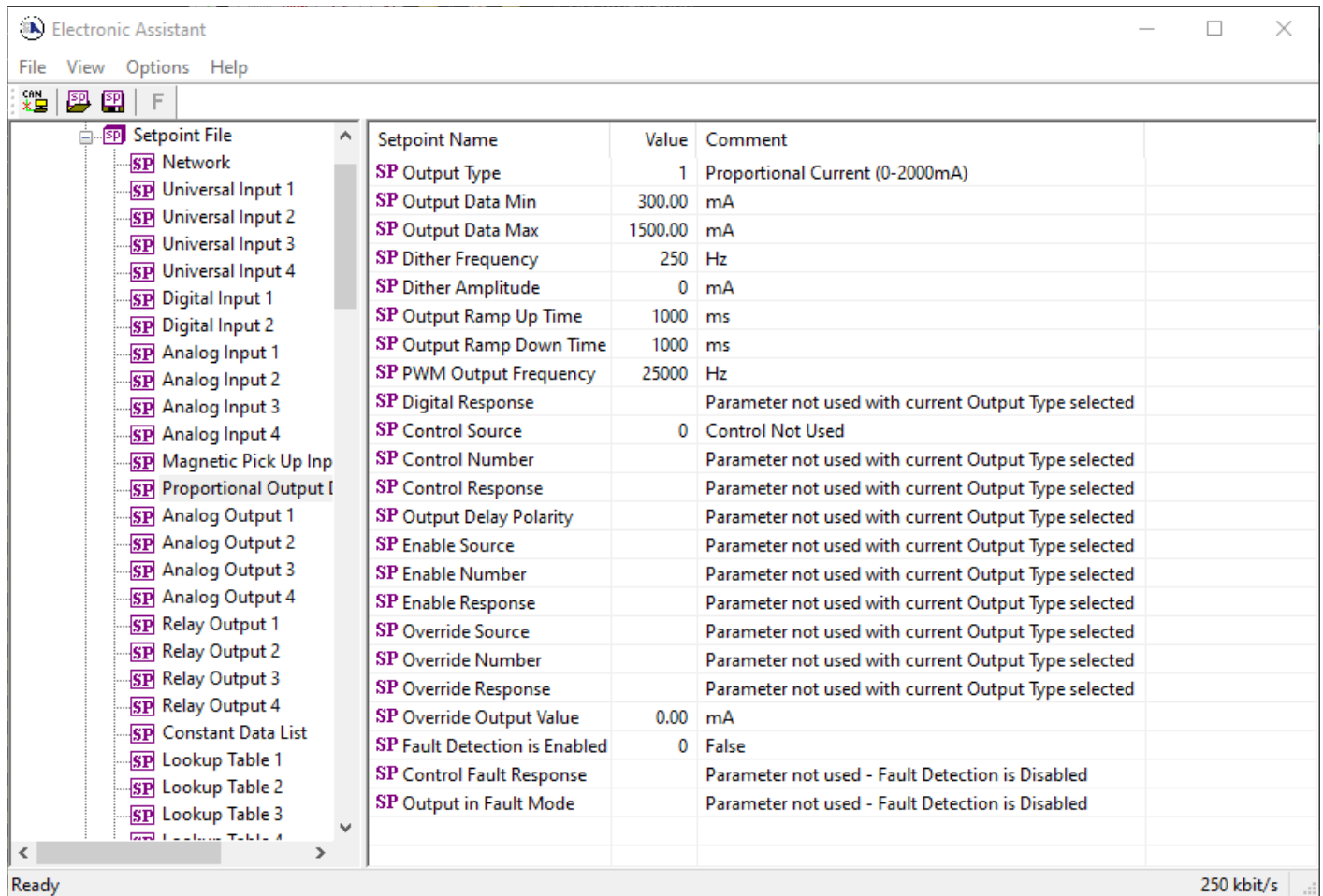


Figure 20 – Screen Capture of Proportional Output Setpoints

Table 28 – Proportional Output Setpoints

Name	Range	Default	Notes
Output Type	Drop List	Proportional current	See Table 8
Output Data Min	0 to Limit	300mA	This setpoint is Hold Current in Digital Hotshot mode
Output Data Max	0 to Limit	1500mA	This setpoint is Hotshot Current in Digital Hotshot mode
Dither Frequency	50 to 400Hz	250Hz	
Dither Amplitude	0 to 500 mA	0	
Ramp Up (Min to Max)	0 to 10 000ms	1000ms	This setpoint is Hotshot Time in Digital Hotshot mode and Digital Delay Time in Digital ON/OFF mode
Ramp Down (Max to Min)	0 to 10 000ms	1000ms	This setpoint is Digital Blink Rate in Digital Hotshot and Digital ON/OFF mode
PWM Output Frequency	1Hz to 25 000Hz	25000Hz	
Digital Response	Drop List	Normal On/Off	See Table 9
Control Source	Drop List	Not Used	See Table 24
Control Number	Depends on control source	1	See Table 24
Enable Source	Drop List	Control not used	See Table 24

Enable Number	Depends on enable source	1	See Table 24
Enable Response	Drop List	Enable When On, Else Shutoff	See Table 6
Override Source	Drop List	Control not used	See Table 24
Override Number	Depends on enable source	1	See Table 24
Override Response	Drop List	Override When On, Else Shutoff	See Table 6
Override Output Value	0-2000	0	
Fault Detection is Enabled	Drop List	0, False	
Control Fault Response	Drop List	1, Apply Fault Value	See Table 10 <b>Table 6</b>
Override Output Value	0-2000	0	

### 4.5. Constant Data List

The Constant Data List Function Block is provided to allow the user to select values as desired for various logic block functions.

The first two constants are fixed values of 0 (False) and 1 (True) for use in binary logic. The remaining 13 constants are fully user programmable to any value between +/- 1 000 000. The default values (shown in Figure 21) are arbitrary and should be configured by the user as appropriate for their application.

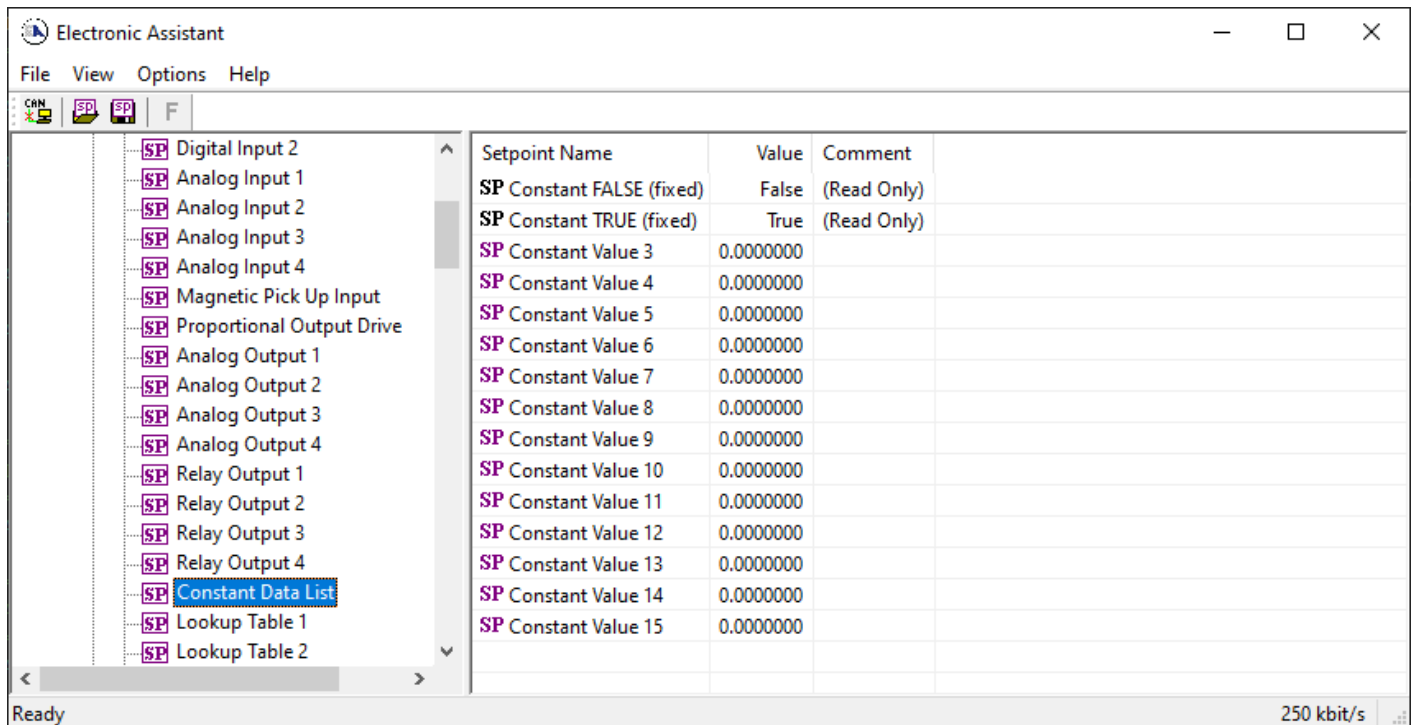


Figure 21 – Screen Capture of Constant Data List Setpoints

### 4.6. Lookup Table

The Lookup Table Function Block is defined in Section 1.9 Please refer there for detailed information about how all these setpoints are used. “X-Axis Source” is set to ‘Control Not Used’ by default. To enable a Lookup Table select appropriate “X-Axis Source”.

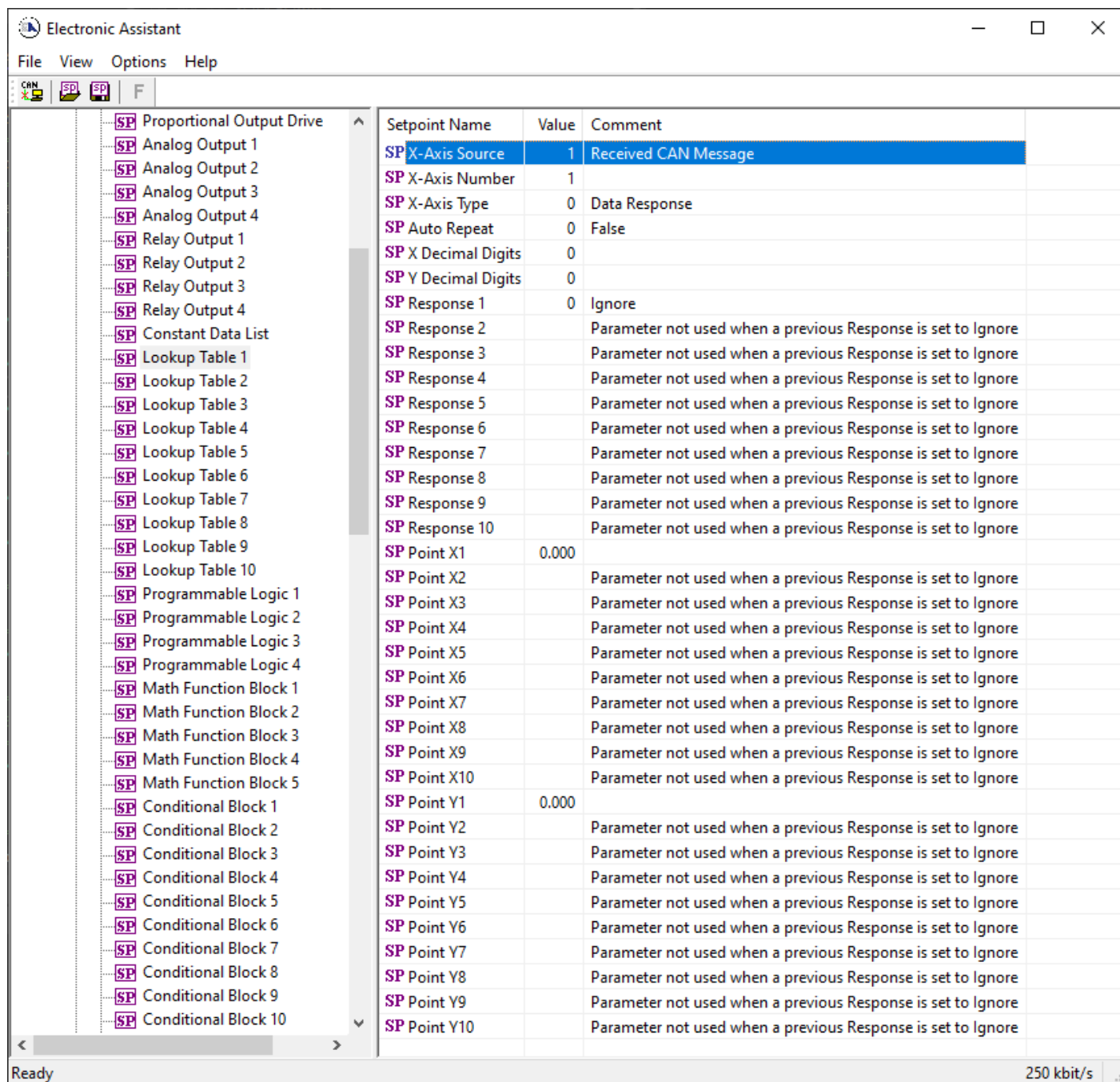


Figure 22 – Screen Capture of Lookup table Setpoints

Table 29 – Lookup Table Setpoints

Name	Range	Default	Notes
X-Axis Source	Drop List	Control Not Used	See Table 24
X-Axis Number	Depends on control source	1	See Table 24
X-Axis Type	Drop List	Data Response	See Table 20
Table Auto-Cycle	Drop List	0	
Point 1 - Response	Drop List	Ramp To	See Table 21
Point 2 - Response	Drop List	Ramp To	See Table 21



Point 3 - Response	Drop List	Ramp To	See Table 21
Point 4 - Response	Drop List	Ramp To	See Table 21
Point 5 - Response	Drop List	Ramp To	See Table 21
Point 6 - Response	Drop List	Ramp To	See Table 21
Point 7 - Response	Drop List	Ramp To	See Table 21
Point 8 - Response	Drop List	Ramp To	See Table 21
Point 9 - Response	Drop List	Ramp To	See Table 21
Point 10 - Response	Drop List	Ramp To	See Table 21
Point 0 - X Value	From X-Axis source minimum	X-Axis source minimum 0.000	See Section 1.9
Point 1 - X Value	From X-Axis source minimum to Point 1 - X Value	0.500	See Section 1.9
Point 2 - X Value	From Point 0 - X Value to Point 2 - X Value	1.000	See Section 1.9
Point 3 - X Value	From Point 1 - X Value to Point 3 - X Value	1.500	See Section 1.9
Point 4 - X Value	From Point 2 - X Value to Point 4 - X Value	2.000	See Section 1.9
Point 5 - X Value	From Point 3 - X Value to Point 5 - X Value source	2.500	See Section 1.9
Point 6 - X Value	From Point 4 - X Value to Point 6 - X Value	3.000	See Section 1.9
Point 7 - X Value	From Point 5 - X Value to Point 7 - X Value	3.500	See Section 1.9
Point 8 - X Value	From Point 6 - X Value to Point 8 - X Value	4.000	See Section 1.9
Point 9 - X Value	From Point 7 - X Value to Point 9 - X Value	4.500	See Section 1.9
Point 10 - X Value	From Point 8 - X Value to Point 10 - X Value	5.000	See Section 1.9
Point 0 - Y Value	-10 <sup>6</sup> to 10 <sup>6</sup>	0.000	
Point 1 - Y Value	-10 <sup>6</sup> to 10 <sup>6</sup>	10.000	
Point 2 - Y Value	-10 <sup>6</sup> to 10 <sup>6</sup>	20.000	
Point 3 - Y Value	-10 <sup>6</sup> to 10 <sup>6</sup>	30.000	
Point 4 - Y Value	-10 <sup>6</sup> to 10 <sup>6</sup>	40.000	
Point 5 - Y Value	-10 <sup>6</sup> to 10 <sup>6</sup>	50.000	
Point 6 - Y Value	-10 <sup>6</sup> to 10 <sup>6</sup>	60.000	
Point 7 - Y Value	-10 <sup>6</sup> to 10 <sup>6</sup>	70.000	
Point 8 - Y Value	-10 <sup>6</sup> to 10 <sup>6</sup>	80.000	
Point 9 - Y Value	-10 <sup>6</sup> to 10 <sup>6</sup>	90.000	
Point 10 - Y Value	-10 <sup>6</sup> to 10 <sup>6</sup>	100.000	

#### 4.7. Programmable Logic

The Programmable Logic function block is defined in Section 1.10. Please refer there for detailed information about how all these setpoints are used. “**Programmable Logic Enabled**” is ‘*False*’ by default. To enable Logic set “**Programmable Logic Enabled**” to ‘*True*’ and select appropriate “**Argument Source**”.

Electronic Assistant

File View Options Help

CAN SP SP F

Setpoint Name	Value	Comment
SP Proportional Output Drive		
SP Analog Output 1		
SP Analog Output 2		
SP Analog Output 3		
SP Analog Output 4		
SP Relay Output 1		
SP Relay Output 2		
SP Relay Output 3		
SP Relay Output 4		
SP Constant Data List		
SP Lookup Table 1		
SP Lookup Table 2		
SP Lookup Table 3		
SP Lookup Table 4		
SP Lookup Table 5		
SP Lookup Table 6		
SP Lookup Table 7		
SP Lookup Table 8		
SP Lookup Table 9		
SP Lookup Table 10		
SP Programmable Logic 1		
SP Programmable Logic 2		
SP Programmable Logic 3		
SP Programmable Logic 4		
SP Math Function Block 1		
SP Math Function Block 2		
SP Math Function Block 3		
SP Math Function Block 4		
SP Math Function Block 5		
SP Conditional Block 1		
SP Conditional Block 2		
SP Conditional Block 3		
SP Conditional Block 4		
SP Conditional Block 5		
SP Conditional Block 6		
SP Conditional Block 7		
SP Conditional Block 8		
SP Conditional Block 9		
SP Conditional Block 10		
SP Set-Reset Latch Block 1		
SP Set-Reset Latch Block 2		
SP Logic Enabled	1	True
SP Table Number 1	1	Lookup Table 1
SP Logical Operator 1	0	Default Table
SP Table 1 - Condition 1 Argument 1 Source		Parameter not used with current Logical Operator selected
SP Table 1 - Condition 1 Argument 1 Number		Parameter not used with current Logical Operator selected
SP Table 1 - Condition 1 Argument 2 Source		Parameter not used with current Logical Operator selected
SP Table 1 - Condition 1 Argument 2 Number		Parameter not used with current Logical Operator selected
SP Table 1 - Condition 1 Operator		Parameter not used with current Logical Operator selected
SP Table 1 - Condition 2 Argument 1 Source		Parameter not used with current Logical Operator selected
SP Table 1 - Condition 2 Argument 1 Number		Parameter not used with current Logical Operator selected
SP Table 1 - Condition 2 Argument 2 Source		Parameter not used with current Logical Operator selected
SP Table 1 - Condition 2 Argument 2 Number		Parameter not used with current Logical Operator selected
SP Table 1 - Condition 2 Operator		Parameter not used with current Logical Operator selected
SP Table 1 - Condition 3 Argument 1 Source		Parameter not used with current Logical Operator selected
SP Table 1 - Condition 3 Argument 1 Number		Parameter not used with current Logical Operator selected
SP Table 1 - Condition 3 Argument 2 Source		Parameter not used with current Logical Operator selected
SP Table 1 - Condition 3 Argument 2 Number		Parameter not used with current Logical Operator selected
SP Table 1 - Condition 3 Operator		Parameter not used with current Logical Operator selected
SP Table Number 2	1	Lookup Table 1
SP Logical Operator 2	0	Default Table
SP Table 2 - Condition 1 Argument 1 Source		Parameter not used with current Logical Operator selected
SP Table 2 - Condition 1 Argument 1 Number		Parameter not used with current Logical Operator selected
SP Table 2 - Condition 1 Argument 2 Source		Parameter not used with current Logical Operator selected
SP Table 2 - Condition 1 Argument 2 Number		Parameter not used with current Logical Operator selected
SP Table 2 - Condition 1 Operator		Parameter not used with current Logical Operator selected
SP Table 2 - Condition 2 Argument 1 Source		Parameter not used with current Logical Operator selected
SP Table 2 - Condition 2 Argument 1 Number		Parameter not used with current Logical Operator selected
SP Table 2 - Condition 2 Argument 2 Source		Parameter not used with current Logical Operator selected
SP Table 2 - Condition 2 Argument 2 Number		Parameter not used with current Logical Operator selected
SP Table 2 - Condition 2 Operator		Parameter not used with current Logical Operator selected
SP Table 2 - Condition 3 Argument 1 Source		Parameter not used with current Logical Operator selected
SP Table 2 - Condition 3 Argument 1 Number		Parameter not used with current Logical Operator selected
SP Table 2 - Condition 3 Argument 2 Source		Parameter not used with current Logical Operator selected
SP Table 2 - Condition 3 Argument 2 Number		Parameter not used with current Logical Operator selected
SP Table 2 - Condition 3 Operator		Parameter not used with current Logical Operator selected
SP Table Number 3	1	Lookup Table 1
SP Logical Operator 3	0	Default Table
SP Table 3 - Condition 1 Argument 1 Source		Parameter not used with current Logical Operator selected
SP Table 3 - Condition 1 Argument 1 Number		Parameter not used with current Logical Operator selected

Ready 250 kbit/s

Figure 23 – Screen Capture of Programmable Logic Setpoints

Setpoint ranges and default values for Programmable Logic Blocs are listed in Table 30. Only “**Table1**” setpoint are listed, because other “**TableX**” setpoints are similar, except for the default value of the “**Lookup Table Block Number**” setpoint, which is X for “**TableX**”.

Table 30 – Programmable Logic Setpoints

<b>Name</b>	<b>Range</b>	<b>Default</b>	<b>Notes</b>
Programmable Logic Enabled	Drop List	False	
Table1 - Lookup Table Block Number	1 to 8	Look up Table 1	
Table1 - Conditions Logical Operation	Drop List	Default Table	See Table 23
Table1 - Condition1, Argument 1 Source	Drop List	Control Not Used	See Table 24
Table1 - Condition1, Argument 1 Number	Depends on control source	1	See Table 24
Table1 - Condition1, Operator	Drop List	=, Equal	See Table 22
Table1 - Condition1, Argument 2 Source	Drop List	Control Not Used	See Table 24
Table1 - Condition1, Argument 2 Number	Depends on control source	1	See Table 24
Table1 - Condition2, Argument 1 Source	Drop List	Control Not Used	See Table 24
Table1 - Condition2, Argument 1 Number	Depends on control source	1	See Table 24
Table1 - Condition2, Operator	Drop List	=, Equal	See Table 22
Table1 - Condition2, Argument 2 Source	Drop List	Control Not Used	See Table 24
Table1 - Condition2, Argument 2 Number	Depends on control source	1	See Table 24
Table1 - Condition3, Argument 1 Source	Drop List	Control Not Used	See Table 24
Table1 - Condition3, Argument 1 Number	Depends on control source	1	See Table 24
Table1 - Condition3, Operator	Drop List	=, Equal	See Table 22
Table1 - Condition3, Argument 2 Source	Drop List	Control Not Used	See Table 24
Table1 - Condition3, Argument 2 Number	Depends on control source	1	See Table 24

#### 4.8. Math Function Block

The Math Function Block is defined in Section 1.6. Please refer there for detailed information about how all these setpoints are used. “**Math Function Enabled**” is ‘False’ by default. To enable a Math function Block, set “**Math Function Enabled**” to ‘True’ and select appropriate “**Input Source**”.

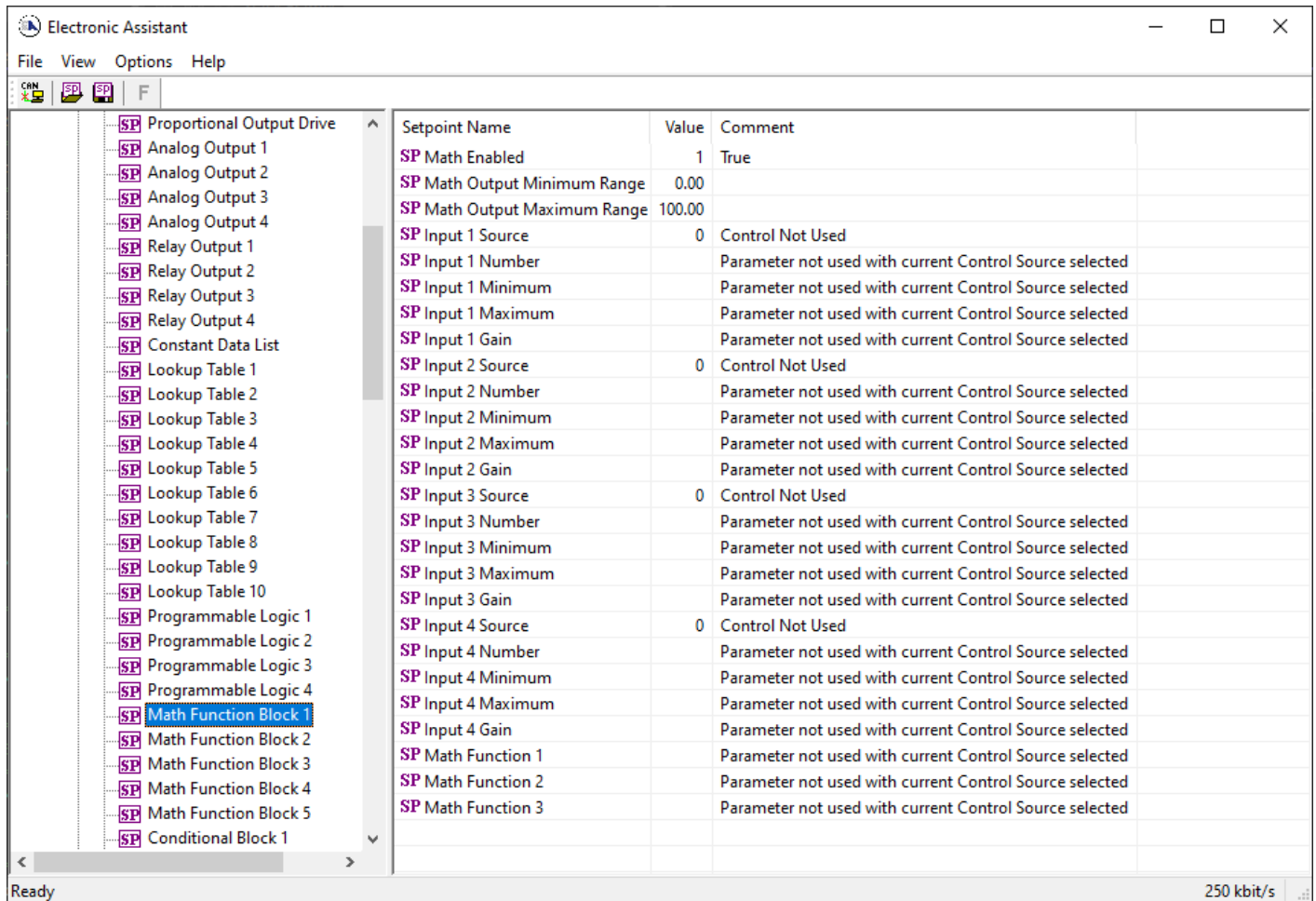


Figure 24 – Screen Capture of Math Function Block Setpoints

Table 31 – Math Function Setpoints

Name	Range	Default	Notes
Math Function Enabled	Drop List	False	
Function 1 Input A Source	Drop List	Control not used	See Table 24
Function 1 Input A Number	Depends on control source	1	See Table 24
Function 1 Input A Minimum	-10 <sup>6</sup> to 10 <sup>6</sup>	0.0	
Function 1 Input A Maximum	-10 <sup>6</sup> to 10 <sup>6</sup>	100.0	
Function 1 Input A Scaler	-1.00 to 1.00	1.00	
Function 1 Input B Source	Drop List	Control not used	See Table 24
Function 1 Input B Number	Depends on control source	1	See Table 24
Function 1 Input B Minimum	-10 <sup>6</sup> to 10 <sup>6</sup>	0.0	
Function 1 Input B Maximum	-10 <sup>6</sup> to 10 <sup>6</sup>	100.0	
Function 1 Input B Scaler	-1.00 to 1.00	1.00	
Math Function 1 Operation	Drop List	=, True when InA Equals InB	See Table 16
Function 2 Input B Source	Drop List	Control not used	See Table 24
Function 2 Input B Number	Depends on control source	1	See Table 24
Function 2 Input B Minimum	-10 <sup>6</sup> to 10 <sup>6</sup>	0.0	
Function 2 Input B Maximum	-10 <sup>6</sup> to 10 <sup>6</sup>	100.0	
Function 2 Input B Scaler	-1.00 to 1.00	1.00	
Math Function 3 Operation	Drop List	=, True when InA Equals InB	See Table 16
Function 3 Input B Source	Drop List	Control not used	See Table 24

Function 3 Input B Number	Depends on control source	1	See Table 24
Function 3 Input B Minimum	-10 <sup>6</sup> to 10 <sup>6</sup>	0.0	
Function 3 Input B Maximum	-10 <sup>6</sup> to 10 <sup>6</sup>	100.0	
Function 3 Input B Scaler	-1.00 to 1.00	1.00	
Math Function 3 Operation	Drop List	=, True when InA Equals InB	See Table 16
Function 4 Input B Source	Drop List	Control not used	See Table 24
Function 4 Input B Number	Depends on control source	1	See Table 24
Function 4 Input B Minimum	-10 <sup>6</sup> to 10 <sup>6</sup>	0.0	
Function 4 Input B Maximum	-10 <sup>6</sup> to 10 <sup>6</sup>	100.0	
Function 4 Input B Scaler	-1.00 to 1.00	1.00	
Math Function 4 Operation	Drop List	=, True when InA Equals InB	See Table 16
Math Output Minimum Range	-10 <sup>6</sup> to 10 <sup>6</sup>	0.0	
Math Outptu Maximum Range	-10 <sup>6</sup> to 10 <sup>6</sup>	100.0	

#### 4.9. Conditional Logic Block Setpoints

The Conditional Block setpoints are defined in Section 1.7. Refer to that section for detailed information on how these setpoints are used. The screen capture in Figure 25 displays the available setpoints for each of the Conditional Blocks. The table below the screen capture highlights the allowable ranges for each setpoint.

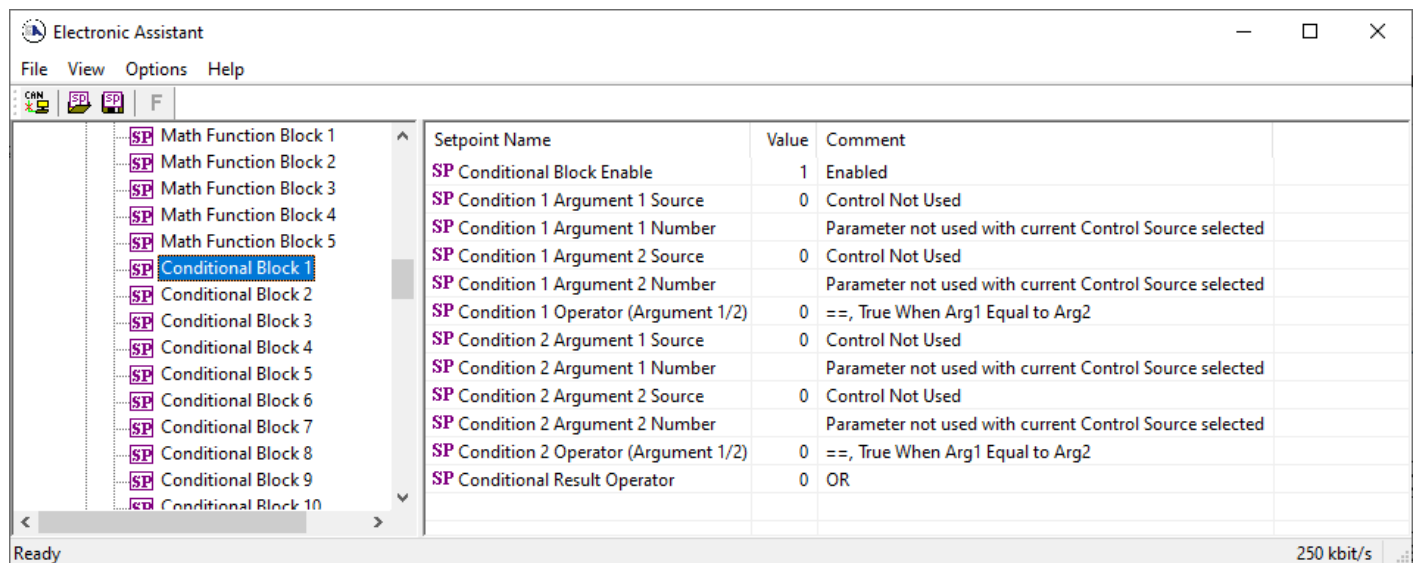


Figure 25: Screen Capture of Conditional Block Setpoints

Table 32. Default Conditional Block Setpoints

Name	Range	Default	Notes
Conditional Function Enabled	Drop List	Disabled	
Condition 1 Argument 1 Source	Drop List	Digital Input	Refer to Table 24
Condition 1 Argument 1 Number	Depends on Source Selected	0	Refer to Table 24
Condition 1 Argument 2 Source	Drop List	Digital Input	Refer to Table 24
Condition 1 Argument 2 Number	Depends on Source Selected	0	Refer to Table 24

Condition 1 Operator (Argument 1/2)	Drop List	0	Refer to Table 17
Condition 2 Argument 1 Source	Drop List	Digital Input	Refer to Table 24
Condition 2 Argument 1 Number	Depends on Source Selected	0	Refer to Table 24
Condition 2 Argument 2 Source	Drop List	Digital Input	Refer to Table 24
Condition 2 Argument 2 Number	Depends on Source Selected	0	Refer to Table 24
Condition 2 Operator (Argument 1/2)	Drop List	0	Refer to Table 17
Conditional Result Operator	Drop List	OR	Refer to Table 18

#### 4.10. Set-Reset Latch Block

The Set-Reset Latch Block setpoints are defined in Section 1.8. Refer to that section for detailed information on how these setpoints are used. The screen capture in Figure 26 displays the available setpoints for each of the Set-Reset Latch Blocks. The table below the screen capture highlights the allowable ranges for each setpoint.

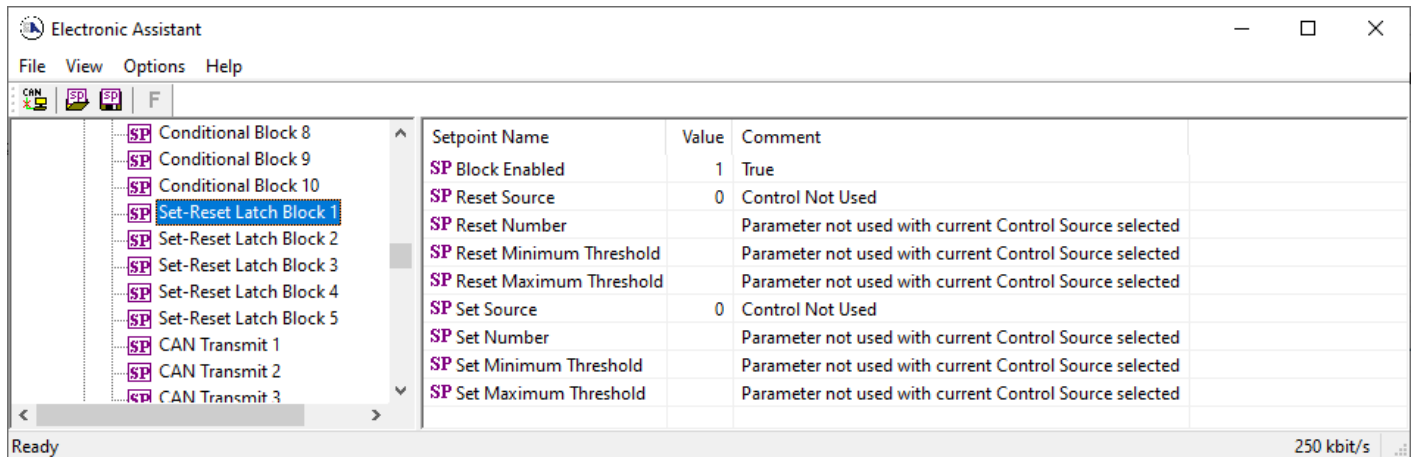


Figure 26: Screen Capture of Set-Reset Latch Block Setpoints

Table 33. Default Set-Reset Latch Block Setpoints

Name	Range	Default	Notes
Block Enabled	Drop List	False	
Reset Source	Drop List	Control Not Used	Refer to Table 24
Reset Number	Depends on Source Selected	1	Refer to Table 24
Reset Minimum Threshold	Drop List	0%	Refer to Section 1.8
Reset Maximum Threshold	Depends on Source Selected	100%	Refer to Section 1.8

Set Source	Drop List	Control Not Used	Refer to Table 24
Set Number	Drop List	1	Refer to Table 24
Set Minimum Threshold	Depends on Source Selected	0%	Refer to Section 1.8
Set Maximum Threshold	Drop List	100%	Refer to Section 1.8

### 4.11. CAN Transmit Setpoints

CAN Transmit Message Function Block is presented in section 1.13. Please refer there for detailed information how these setpoints are used. **“Transmit Repetition Rate”** is 0ms by default, thus no message will be sent.

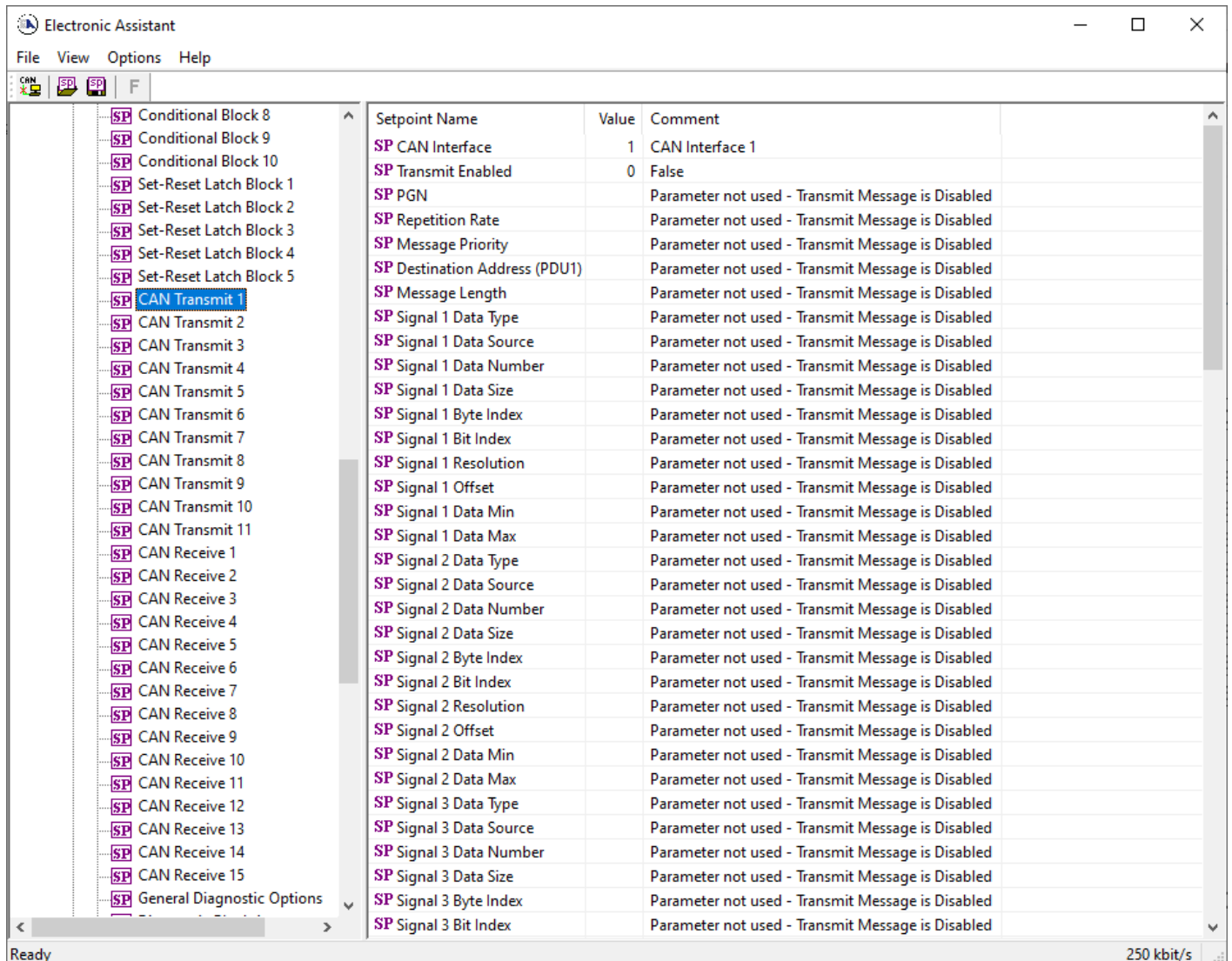


Figure 27 – Screen Capture of CAN Transmit Message Setpoints

Table 34 – CAN Transmit Message Setpoints

Name	Range	Default	Notes
CAN Interface	Drop List	CAN Interface #1	
Transmit Enabled	Drop List	0, False	
Transmit PGN	0xff00 ... 0xffff	Different for each	See section 1.13.1
Transmit Repetition Rate	0 ... 65000 ms	0ms	0ms disables transmit
Transmit Message Priority	0...7	6	Proprietary B Priority
Destination Address	0...255	255	Not used by default
Signal X Control Source	Drop List	Different for each	See Table 24
Signal X Control Number	Drop List	Different for each	See 1.13.2
Signal X Transmit Data Size	Drop List	2 bytes	
Signal X Transmit Data Index in Array	0-7	0	
Signal X Transmit Bit Index In Byte	0-7	0	
Signal X Transmit Data Resolution	-100000.0 to 100000	1/bits	
Signal X Transmit Data Offset	-10000 to 10000	0.0	
Signal X Transmit Data Minimum	-100000.0 to 100000	0.0	
Signal X Transmit Data Maximum	-100000.0 to 100000	65535.0	

## 4.12. CAN Receive Setpoints

The CAN Receive Block is defined in section 1.14. Please refer there for detailed information about how these setpoints are used. “**Receive Message Timeout**” is set to 0ms by default. To enable Receive message set “**Receive Message Timeout**” that differs from zero.

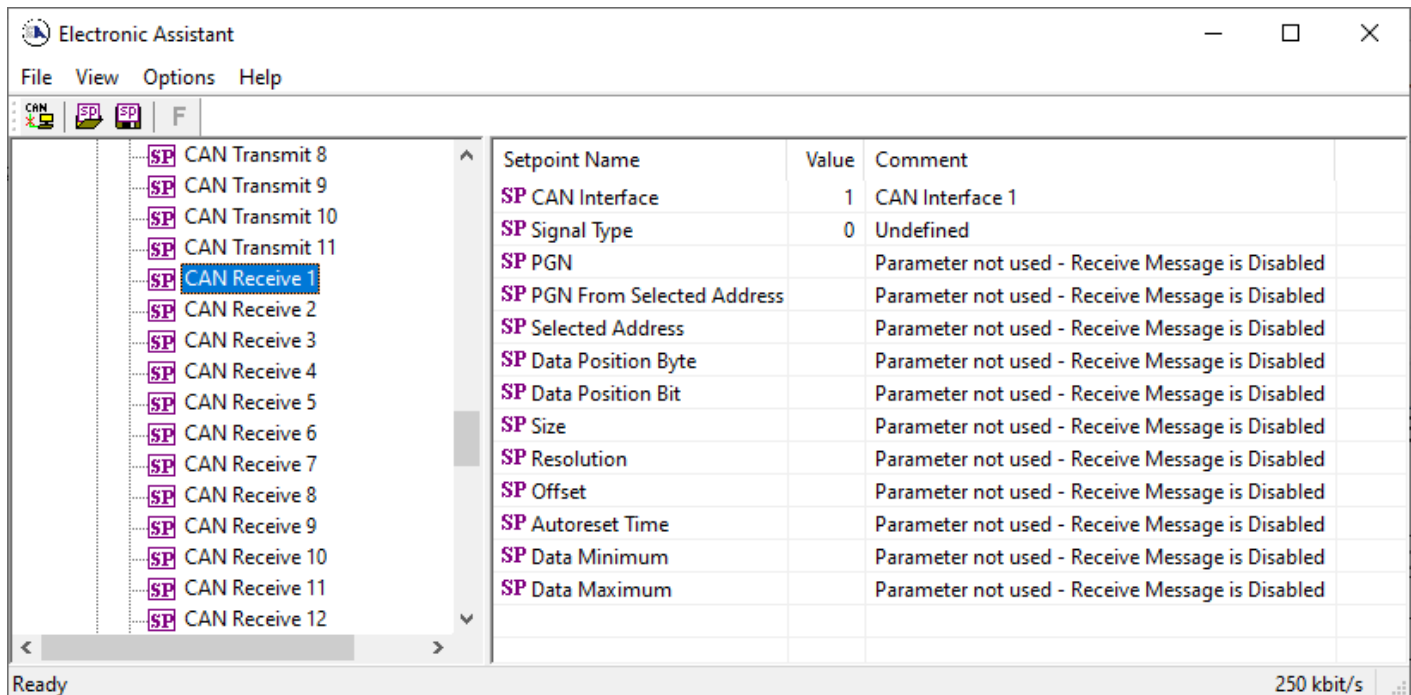


Figure 28 – Screen Capture of CAN Receive Message Setpoints

Table 35 – CAN Receive Setpoints

Name	Range	Default	Notes
CAN Interface	Drop List	CAN Interface #1	
Received Message Enabled	Drop List	False	
Received PGN	0 to 65536	Different for each	
Received Message Timeout	0 to 60 000 ms	0ms	
Specific Address that sends PGN	0 to 255	254 (0xFE, Null Addr)	
Receive Transmit Data Size	Drop List	2 bytes	



Receive Transmit Data Index in Array	0-7	4	
Receive Transmit Bit Index In Byte	0-7	0	
Receive Transmit Data Resolution	-100000.0 to 100000	0.001	
Receive Transmit Data Offset	-10000 to 10000	0.0	
Receive Data Min (Off Threshold)	-1000000 to Max	0.0	
Receive Data Max (On Threshold)	-100000 to 100000	2.0	

### 4.13. General Diagnostics Options

These setpoints control the shutdown of the ECU in case of a power supply or CPU temperature related errors. Refer to section 1.5 for more info.

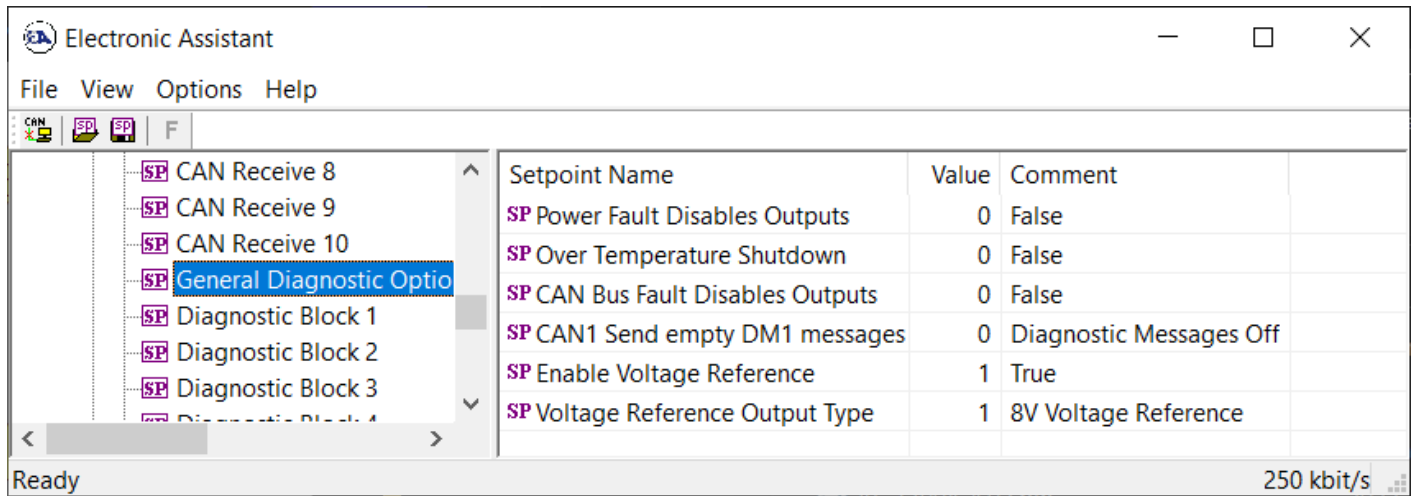


Figure 29 – Screen Capture of General Diagnostics Options Setpoints

Table 36 – General Diagnostics Options Setpoints

Name	Range	Default	Notes
Power Fault Disables Outputs	Drop List	0	
Over Temperature Shutdown	Drop List	0	
CAN Bus Fault Disables Outputs	Drop List	0	
CAN1 Send empty DM1 messages	Drop List	0	
Enable Voltage Reference	Drop List	1	
Voltage Reference Output Type	Drop List	1	

### 4.14. Diagnostics Blocks

There are 16 Diagnostics blocks that can be configured to monitor various parameters of the Controller. The Diagnostic Function Block is defined in section 1.5. Please refer there for detailed information how these setpoints are used.

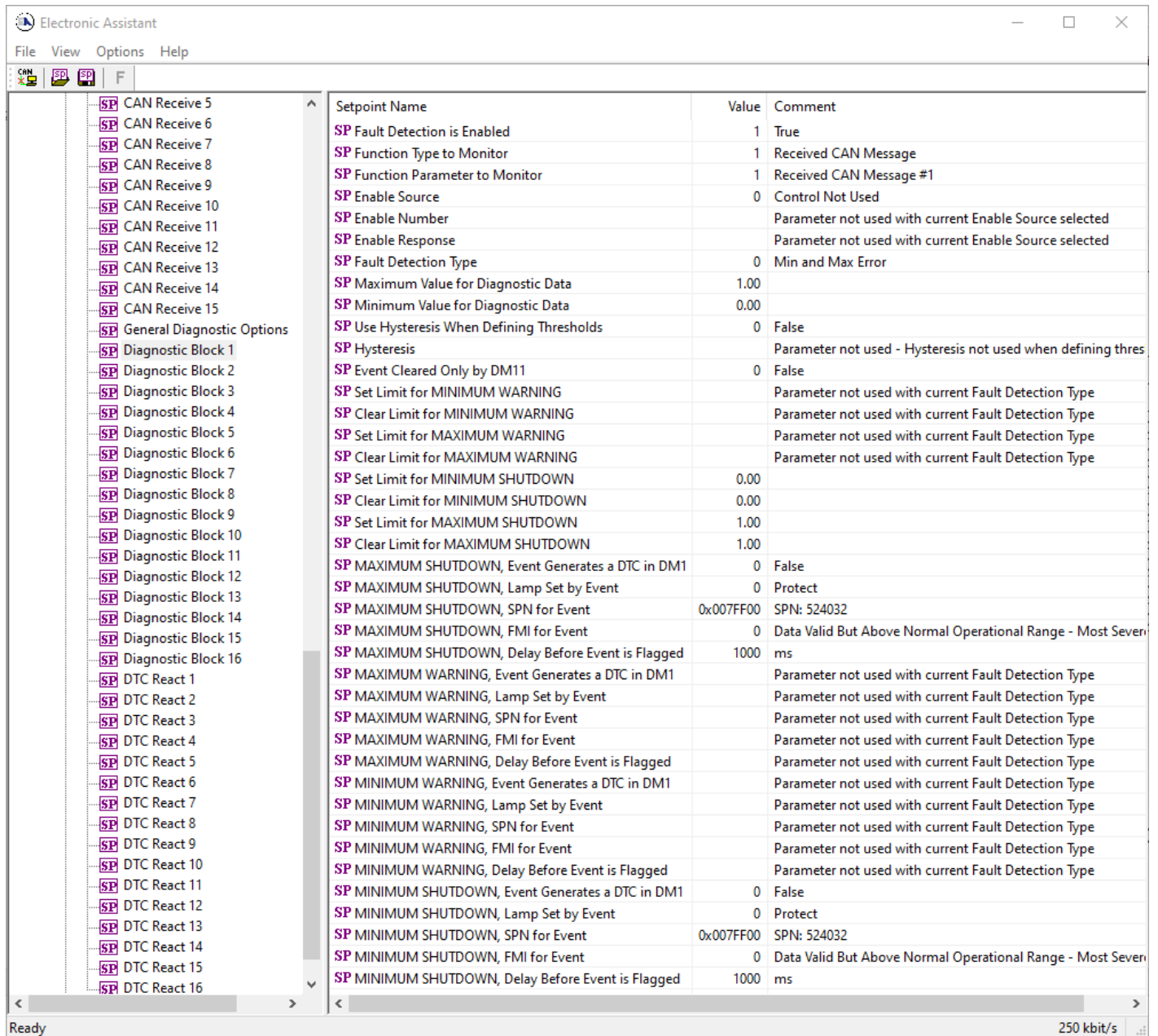


Figure 30 – Screen Capture of Diagnostic Block Setpoints

Table 37 – Diagnostic Block Setpoints

Name	Range	Default	Notes
Fault Detection is Enabled	Drop List	False	
Function Type to Monitor	Drop List	0 – Control not used	
Function parameter to Monitor	Drop List	0 – No selection	
Fault Detection Type	Drop List	0 – Min and Max Error	See section 1.5
Maximum Value for Diagnostic Data	Minimum Value for Diagnostic Data ... 4.28e <sup>9</sup>	5.0	
Minimum Value for Diagnostic Data	0.0 ... Maximum Value for Diagnostic Data	0.0	
Use Hysteresis When Defining Thresholds	Drop List	False	

Hysteresis	0.0 ... Maximum Value for Diagnostic Data	0.0	
Event Cleared only by DM1	Drop List	False	
Set Limit for MAXIMUM SHUTDOWN	Minimum Value for Diagnostic Data ... Maximum Value for Diagnostics Data	4.8	
Clear Limit for MAXIMUM SHUTDOWN	Minimum Value for Diagnostic Data ... Maximum Value for Diagnostics Data	4.6	
Set Limit for MAXIMUM WARNING	Minimum Value for Diagnostic Data ... Maximum Value for Diagnostics Data	0.0	
Clear Limit for MAXIMUM WARNING	Minimum Value for Diagnostic Data ... Maximum Value for Diagnostics Data	0.0	
Clear Limit for MINIMUM WARNING	Minimum Value for Diagnostic Data ... Maximum Value for Diagnostics Data	0.0	
Set Limit for MINIMUM WARNING	Minimum Value for Diagnostic Data ... Maximum Value for Diagnostics Data	0.0	
Clear Limit for MINIMUM SHUTDOWN	Minimum Value for Diagnostic Data ... Maximum Value for Diagnostics Data	0.4	
Set Limit for MINIMUM SHUTDOWN	Minimum Value for Diagnostic Data ... Maximum Value for Diagnostics Data	0.2	
MAXIMUM SHUTDOWN, Event Generates a DTC in DM1	Drop List	True	
MAXIMUM SHUTDOWN, Lamp Set by Event	Drop List	0 – Protect	See Table 13
MAXIMUM SHUTDOWN, SPN for Event	0...524287	520448 (\$7F100)	It is the user's responsibility to select an SPN that will not violate the J1939 standard.
MAXIMUM SHUTDOWN, FMI for Event	Drop List	3, Voltage Above Normal	See Table 14
MAXIMUM SHUTDOWN, Delay Before Event is Flagged	0...60000 ms	1000	
MAXIMUM WARNING, Event Generates a DTC in DM1	Drop List	True	
MAXIMUM WARNING, Lamp Set by Event	Drop List	0 – Protect	See Table 13
MAXIMUM WARNING, SPN for Event	0...524287	520704 (\$7F200)	It is the user's responsibility to select an SPN that will not violate the J1939 standard.

MAXIMUM WARNING, FMI for Event	Drop List	3, Voltage Above Normal	See Table 14
MAXIMUM WARNING, Delay Before Event is Flagged	0...60000 ms	1000	
MINIMUM WARNING, Event Generates a DTC in DM1	Drop List	True	
MINIMUM WARNING, Lamp Set by Event	Drop List	0 – Protect	See Table 13
MAXIMUM WARNING, SPN for Event	0...524287	520960 (\$7F300)	It is the user's responsibility to select an SPN that will not violate the J1939 standard.
MINIMUM WARNING, FMI for Event	Drop List	4, Voltage Below Normal	See Table 14
MINIMUM WARNING, Delay Before Event is Flagged	0...60000 ms	1000	
MINIMUM SHUTDOWN, Event Generates a DTC in DM1	Drop List	True	
MINIMUM SHUTDOWN, Lamp Set by Event	Drop List	Amber Warning	See Table 13
MINIMUM SHUTDOWN, SPN for Event	0...524287	521216 (\$7F400)	It is the user's responsibility to select an SPN that will not violate the J1939 standard.
MINIMUM SHUTDOWN, FMI for Event	Drop List	4, Voltage Below Normal	See Table 14
MINIMUM SHUTDOWN, Delay Before Event is Flagged	0...60000 ms	1000	

#### 4.15. DTC React Function Block

The DTC React function block is described in Section 1.12. The Figure below shows the DTC React function block setpoints. The Table below show the default values. Please note: *The setpoint "DTC React is Enabled" was changed to 1, True.*

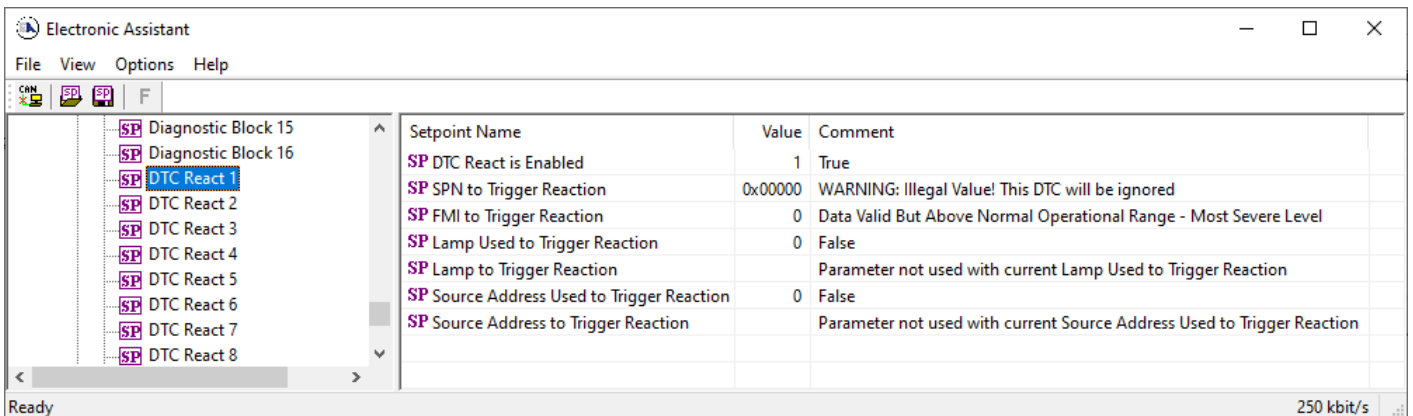


Figure 31 DTC React Setpoints

Table 38 – DTC React Setpoints

Name	Range	Default	Notes
DTC React is Enabled	Drop List	0, False	

SPN to Trigger Reaction	0x00 to 0x3FFFF	0	
FMI to Trigger Reaction	Drop List	0	
Lamp Used to Trigger Reaction	Drop list	0, False	
Lamp to Trigger Reaction	Drop List	0, Protect	
Source Address Used to Trigger Reaction	Drop list	0, False	
Source Address to Trigger Reaction	0x00 to 0xFF	0	

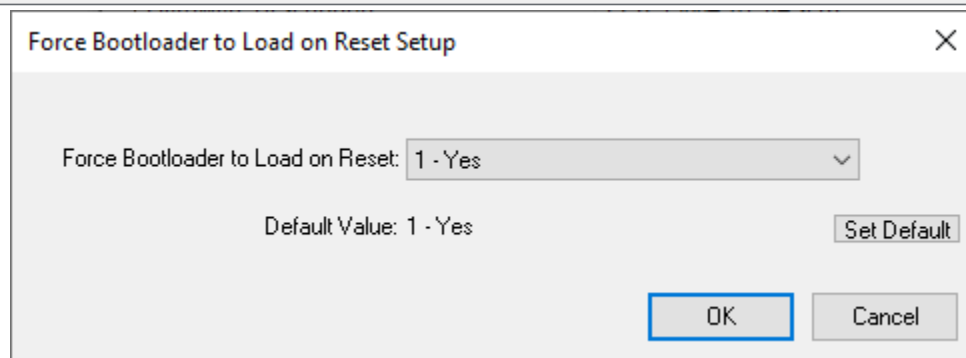
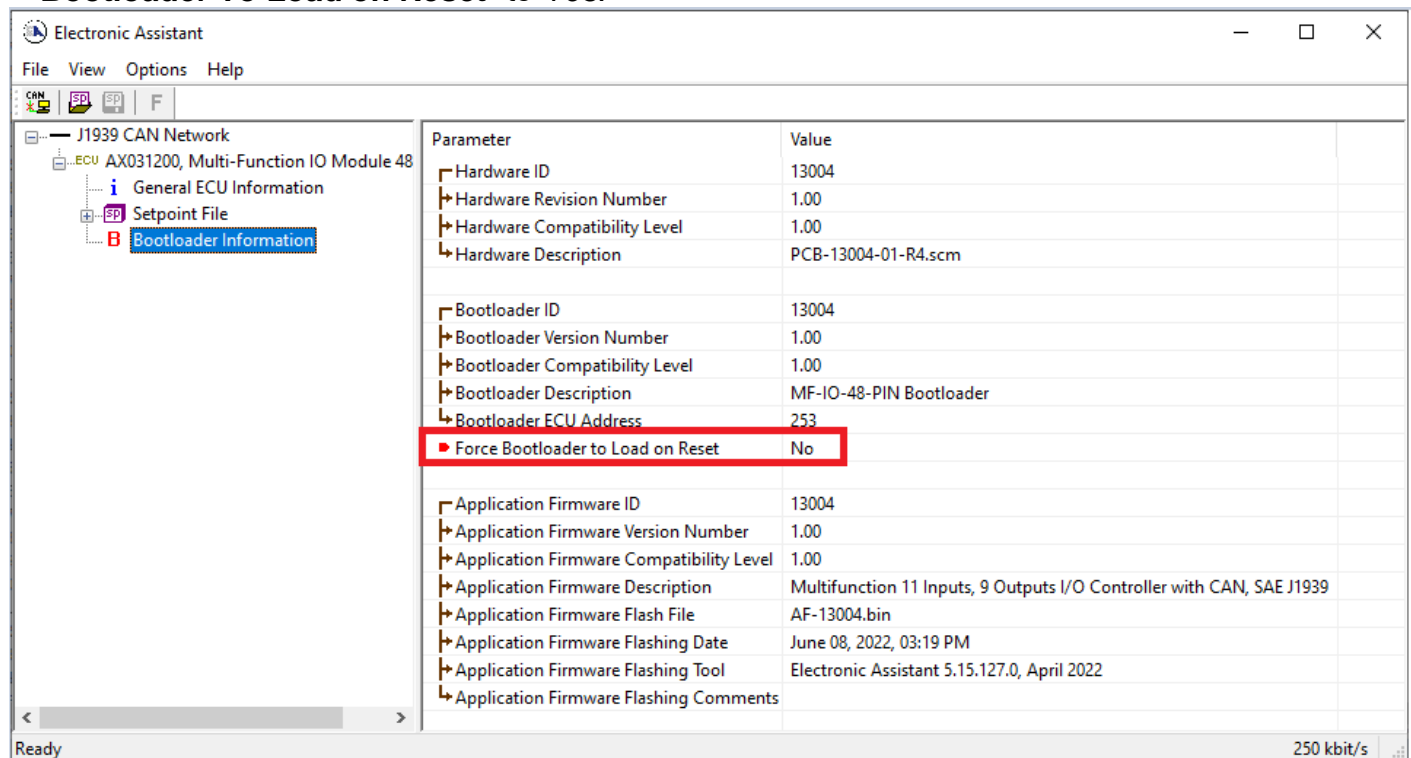
## 5. REFLASHING OVER CAN WITH EA BOOTLOADER

The AX031200 can be upgraded with new application firmware using the **Bootloader Information** section. This section details the simple step-by-step instructions to upload new firmware provided by Axiomatic onto the unit via CAN, without requiring it to be disconnected from the J1939 network.

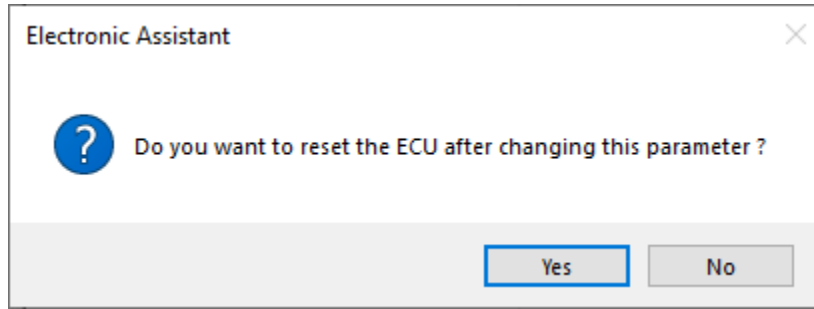
*Note: To upgrade the firmware use Axiomatic Electronic Assistant V4.5.53.0 or higher.*

1. When EA first connects to the ECU, the **Bootloader Information** section will display the following information.

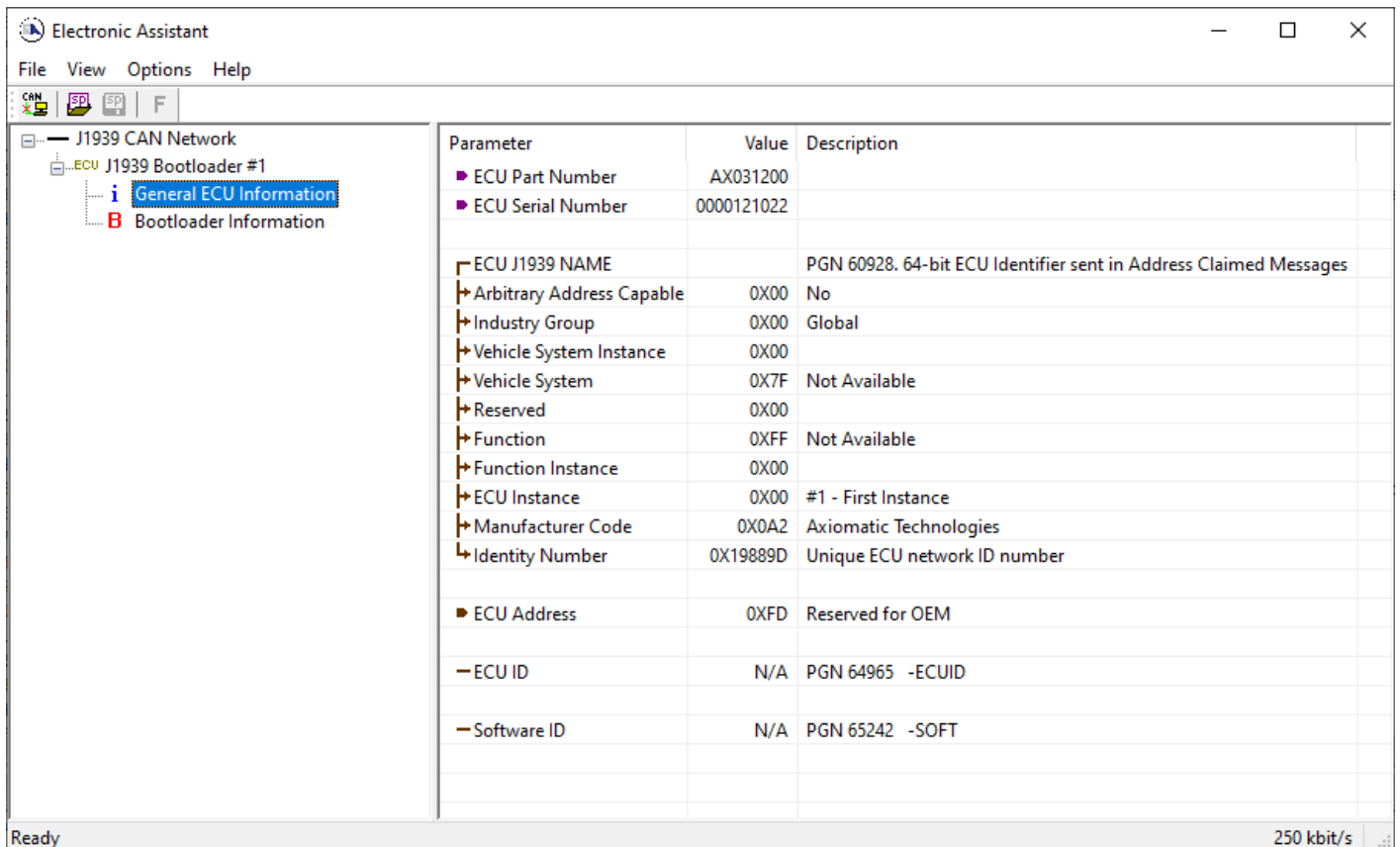
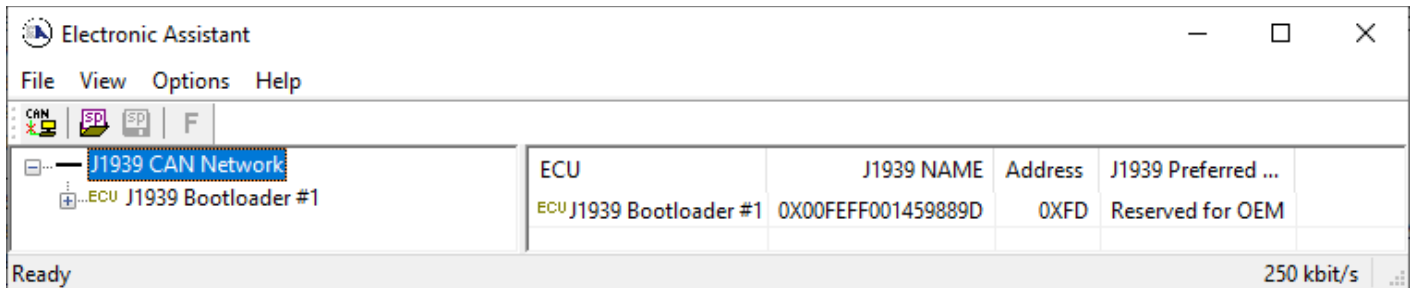
2. To use the bootloader to upgrade the firmware running on the ECU, change the variable “**Force Bootloader To Load on Reset**” to Yes.



3. When the prompt box asks if you want to reset the ECU, select Yes.



4. Upon reset, the ECU will no longer show up on the J1939 network as an AX031200 but rather as **J1939 Bootloader #1**.

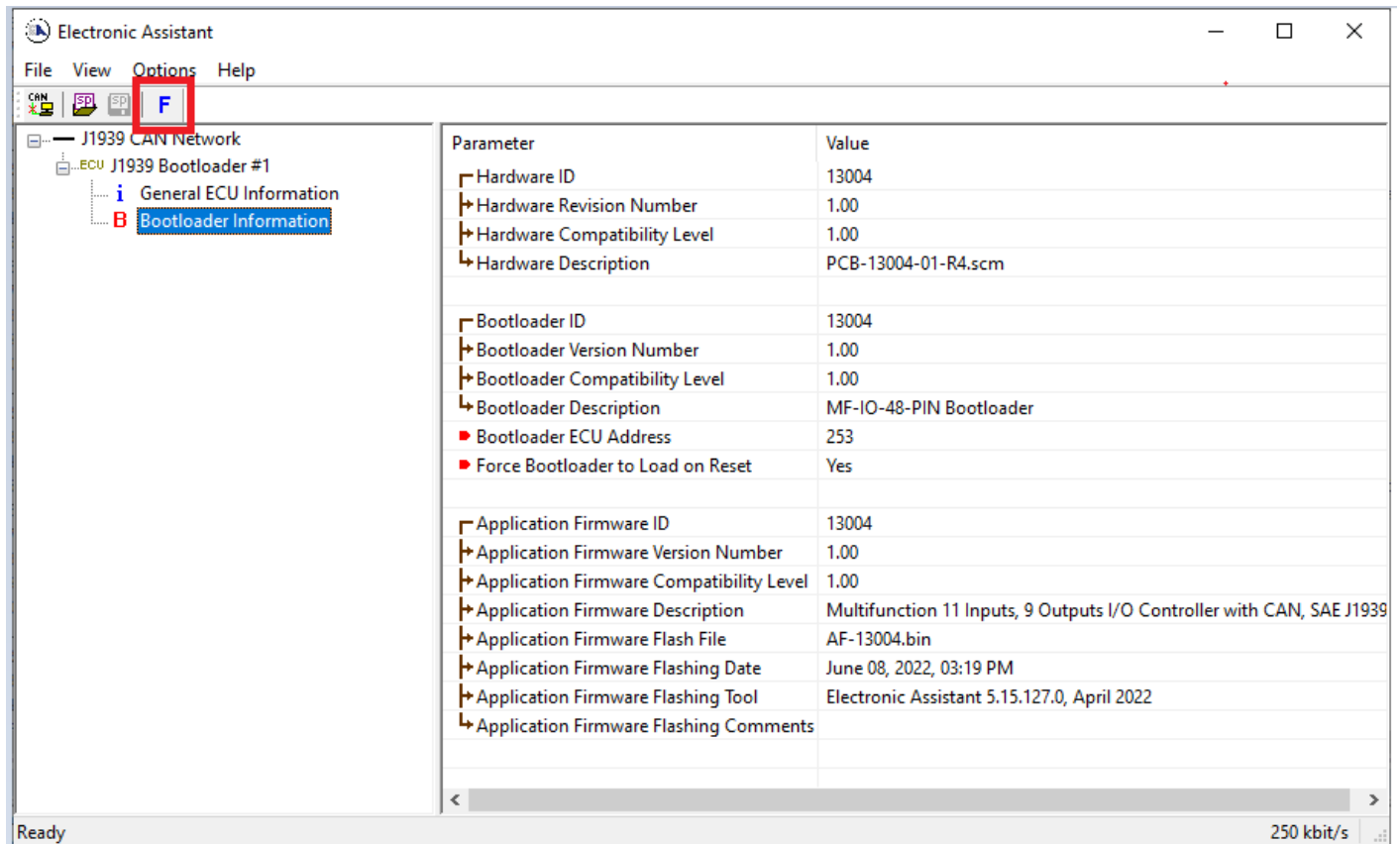


*Note that the bootloader is NOT Arbitrary Address Capable. This means that if you want to have multiple bootloaders running simultaneously (not recommended) you would have to manually change the address for each one before activating the next, or there will be address conflicts. And only one ECU would show up as the bootloader. Once the 'active' bootloader returns to regular functionality, the other ECU(s) would have to be power cycled to re-activate the bootloader feature.*





- When the **Bootloader Information** section is selected, the same information is shown as when it was running the AX031200 firmware, but in this case the **Flashing** feature has been enabled.



- Select the **Flashing** button and navigate to where you had saved the **AF-13004-VX.XX.bin** file sent from Axiomatic. (Note: only binary (.bin) files can be flashed using the EA tool.)
- Once the Flash Application Firmware window opens, you can enter comments such as “Firmware upgraded by [Name]” if you so desire. This is not required, and you can leave the field blank if you do not want to use it.

Note: You do not have to date/time-stamp the file, as this is done automatically by the EA tool when you upload the new firmware.

Flash Application Firmware

Flash File Name: AF-13004.bin

Flashing Comments: Firmware uploaded by Dmytro Tsebrii  
Press CTRL+ENTER to add a new string

Erase All ECU Flash Memory

Flashing Status  
Idle

Flash ECU

Cancel Flashing

Exit



**WARNING:** Do not check the “Erase All ECU Flash Memory” box unless instructed to do so by your Axiomatic contact. Selecting this will erase ALL data stored in non-volatile flash, including the calibration done by Axiomatic during factory testing. It will also erase any configuration of the setpoints that might have been done to the ECU and reset all setpoints to their factory defaults. By leaving this box unchecked, none of the setpoints will be changed when the new firmware is uploaded.

A progress bar will show how much of the firmware has been sent as the upload progresses. The more traffic there is on the J1939 network, the longer the upload process will take.

Flash Application Firmware

Flash File Name: AF-13004.bin

Flashing Comments: Firmware uploaded by Dmytro Tsebrii  
Press CTRL+ENTER to add a new string

Erase All ECU Flash Memory

Flashing Status  
Flashing Memory...

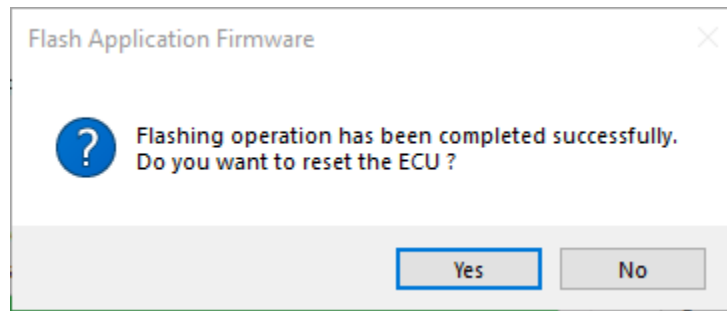
Flash ECU

Cancel Flashing

Exit

Once the firmware has finished uploading, a message will pop up indicating the successful operation. If you select to reset the ECU, the new version of the AX031200 application will start

running, and the ECU will be identified as such by EA. Otherwise, The next time the ECU is power-cycled, the AX031200 application will run rather than the bootloader function.



Note: If at any time during the upload the process is interrupted, the data is corrupted (bad checksum) or for any other reason the new firmware is not correct, i.e. bootloader detects that the file loaded was not designed to run on the hardware platform, the bad or corrupted application will not run. Rather, when the ECU is reset or power-cycled the **J1939 Bootloader** will continue to be the default application until valid firmware has been successfully uploaded into the unit.

## APPENDIX A - TECHNICAL SPECIFICATION

Specifications are indicative and subject to change. Actual performance will vary depending on the application and operating conditions. Users should satisfy themselves that the product is suitable for use in the intended application. All our products carry a limited warranty against defects in material and workmanship. Please refer to our Warranty, Application Approvals/Limitations and Return Materials Process as described on <https://www.axiomatic.com/service/>.

### Power

Power Supply Input	12 V, 24 Vdc nominal 8 Vdc to 36 Vdc range
Quiescent Current Draw	30 mA @ 24 Vdc; 37 mA @ 12 Vdc
Protections	Surge protection is provided. Reverse polarity protection up to -80 Vdc is provided. Input overvoltage (37 V) and input undervoltage (6 V) protection is provided. The unit is designed for 202 Vdc based load dump.

### Inputs

Inputs	3 universal inputs 12-bit analog to digital (voltage)  All 3 inputs are programmable as follows.								
	<table border="1"> <tr> <td>Voltage Inputs</td> <td>Range: 0 to 5 V, Impedance (204 K<math>\Omega</math>) 0 to 10 V, Impedance (136 K<math>\Omega</math>) 1 mV resolution, +/-0.2% error</td> </tr> <tr> <td>PWM Inputs</td> <td>Frequency: 1 to 10,000 Hz Duty Cycle: 0 to 100%</td> </tr> <tr> <td>Frequency Inputs</td> <td>Range: 1 to 10,000 Hz 0.01% resolution, +/-0.1% error</td> </tr> <tr> <td>Digital Inputs</td> <td>Active High or active Low with 10 K<math>\Omega</math> pull-up or pull-down Amplitude: Up to +Vsupply</td> </tr> </table>	Voltage Inputs	Range: 0 to 5 V, Impedance (204 K $\Omega$ ) 0 to 10 V, Impedance (136 K $\Omega$ ) 1 mV resolution, +/-0.2% error	PWM Inputs	Frequency: 1 to 10,000 Hz Duty Cycle: 0 to 100%	Frequency Inputs	Range: 1 to 10,000 Hz 0.01% resolution, +/-0.1% error	Digital Inputs	Active High or active Low with 10 K $\Omega$ pull-up or pull-down Amplitude: Up to +Vsupply
Voltage Inputs	Range: 0 to 5 V, Impedance (204 K $\Omega$ ) 0 to 10 V, Impedance (136 K $\Omega$ ) 1 mV resolution, +/-0.2% error								
PWM Inputs	Frequency: 1 to 10,000 Hz Duty Cycle: 0 to 100%								
Frequency Inputs	Range: 1 to 10,000 Hz 0.01% resolution, +/-0.1% error								
Digital Inputs	Active High or active Low with 10 K $\Omega$ pull-up or pull-down Amplitude: Up to +Vsupply								
Protection	Protected against short circuit to GND or +Vsupply								

### Outputs

Outputs	2 outputs programmable as follows.												
	<table border="1"> <tr> <td>Proportional Current Output</td> <td>1 mA resolution, +/-1% error</td> </tr> <tr> <td>Hotshot Digital Output</td> <td>Firmware programmable waveform</td> </tr> <tr> <td>High frequency drive</td> <td>25 kHz</td> </tr> <tr> <td>PWM Output</td> <td>0.1% resolution, +/-0.1% error</td> </tr> <tr> <td>Proportional Voltage Output</td> <td>0.1 V resolution, +/-5% error</td> </tr> <tr> <td>On/Off Digital Output</td> <td>Sourcing from power supply, sinking from output to ground or off.</td> </tr> </table>	Proportional Current Output	1 mA resolution, +/-1% error	Hotshot Digital Output	Firmware programmable waveform	High frequency drive	25 kHz	PWM Output	0.1% resolution, +/-0.1% error	Proportional Voltage Output	0.1 V resolution, +/-5% error	On/Off Digital Output	Sourcing from power supply, sinking from output to ground or off.
Proportional Current Output	1 mA resolution, +/-1% error												
Hotshot Digital Output	Firmware programmable waveform												
High frequency drive	25 kHz												
PWM Output	0.1% resolution, +/-0.1% error												
Proportional Voltage Output	0.1 V resolution, +/-5% error												
On/Off Digital Output	Sourcing from power supply, sinking from output to ground or off.												
	The outputs are also configurable as 1 H-Bridge or 2 individual High-Side/Low-Side outputs as follows.												
	<table border="1"> <tr> <td>High-Bridge Type</td> <td>Current sensing Load connected between two output pins Sourcing up to 2.5 A</td> </tr> <tr> <td>High-Side Type</td> <td>Half-bridge output Current sensing Load connected to +Vsupply Sourcing up to 2.5 A</td> </tr> <tr> <td>Low-Side Type</td> <td>Switch to GND Current sensing Load connected to +Vsupply Sinking up to 2.5 A</td> </tr> </table>	High-Bridge Type	Current sensing Load connected between two output pins Sourcing up to 2.5 A	High-Side Type	Half-bridge output Current sensing Load connected to +Vsupply Sourcing up to 2.5 A	Low-Side Type	Switch to GND Current sensing Load connected to +Vsupply Sinking up to 2.5 A						
High-Bridge Type	Current sensing Load connected between two output pins Sourcing up to 2.5 A												
High-Side Type	Half-bridge output Current sensing Load connected to +Vsupply Sourcing up to 2.5 A												
Low-Side Type	Switch to GND Current sensing Load connected to +Vsupply Sinking up to 2.5 A												
	Load at power supply voltage must not draw more than 2.5 A.												
Voltage Reference	+5 V or +8 V programmable 100 mA, 2% reference voltage output												
Protection	Overcurrent protection Short-circuit protection in hardware												

### General Specifications

Microcontroller	STM32H725RGV3
Communications	1 CAN SAE J1939-compliant port 250 kbit/s, 500 kbit/s, 667 kbit/s, 1 Mbit/s auto-baud-rate detection
Control Logic	Standard embedded control logic is provided. Refer to the User Manual.

User Interface	User configuration and diagnostics are provided with the Axiomatic Electronic Assistant P/N: <b>AX070502</b> or <b>AX070506K</b>
Compliance	RoHS
Vibration	Pending
Shock	Pending
Operating Conditions	-40°C to 85°C (-40°F to 185°F)
Storage Temperature	-40°C to 105°C (-40°F to 221°F)
Weight	0.25 lb. (0.111 kg)
Protection Rating	IP67
Enclosure and Dimensions	Molded Enclosure, integral connector Nylon 6/6, 30% glass, Laser Welded 4.28 in x 3.69 in x 1.41 in (108.6 mm x 94 mm x 36 mm) Note: L x W x H includes the integral connector Flammability rating: UL 94 HB Refer to Dimensional Drawing.
Electrical Connections	Integral 12-pin receptacle (equivalent to TE Deutsch P/N: <b>DTM04-12P</b> )
Mating Connectors	Mating Plug KIT P/N: <b>PL-DTM06-12SA</b> (includes 1 DTM06-12SA plug, 1 WM-12S wedgelock, 12 0462-201-20141 solid contacts, and 6 0413-204-2005 sealing plugs)
Mounting	Mounting holes are sized for #10 or M5 bolts. The bolt length will be determined by the end-user's mounting plate thickness. The mounting flange of the controller is 0.47 inches (12 mm) thick. It should be mounted with connectors facing left or right to reduce likelihood of moisture entry. All field wiring should be suitable for the operating temperature range. Install the unit with appropriate space available for servicing and for adequate wire harness access (6 inches or 15 cm) and strain relief (12 inches or 30 cm).

## OUR PRODUCTS

AC/DC Power Supplies  
Actuator Controls/Interfaces  
Automotive Ethernet Interfaces  
Battery Chargers  
CAN Controls, Routers, Repeaters  
CAN/WiFi, CAN/Bluetooth, Routers  
Current/Voltage/PWM Converters  
DC/DC Power Converters  
Engine Temperature Scanners  
Ethernet/CAN Converters,  
Gateways, Switches  
Fan Drive Controllers  
Gateways, CAN/Modbus, RS-232  
Gyroscopes, Inclinometers  
Hydraulic Valve Controllers  
Inclinometers, Triaxial  
I/O Controls  
LVDT Signal Converters  
Machine Controls  
Modbus, RS-422, RS-485 Controls  
Motor Controls, Inverters  
Power Supplies, DC/DC, AC/DC  
PWM Signal Converters/Isolators  
Resolver Signal Conditioners  
Service Tools  
Signal Conditioners, Converters  
Strain Gauge CAN Controls  
Surge Suppressors

## OUR COMPANY

Axiomatic provides electronic machine control components to the off-highway, commercial vehicle, electric vehicle, power generator set, material handling, renewable energy and industrial OEM markets. ***We innovate with engineered and off-the-shelf machine controls that add value for our customers.***

## QUALITY DESIGN AND MANUFACTURING

We have an ISO9001:2015 registered design/manufacturing facility in Canada.

## WARRANTY, APPLICATION APPROVALS/LIMITATIONS

Axiomatic Technologies Corporation reserves the right to make corrections, modifications, enhancements, improvements, and other changes to its products and services at any time and to discontinue any product or service without notice. Customers should obtain the latest relevant information before placing orders and should verify that such information is current and complete. Users should satisfy themselves that the product is suitable for use in the intended application. All our products carry a limited warranty against defects in material and workmanship. Please refer to our Warranty, Application Approvals/Limitations and Return Materials Process at <https://www.axiomatic.com/service/>.

## COMPLIANCE

Product compliance details can be found in the product literature and/or on [axiomatic.com](http://axiomatic.com). Any inquiries should be sent to [sales@axiomatic.com](mailto:sales@axiomatic.com).

## SAFE USE

All products should be serviced by Axiomatic. Do not open the product and perform the service yourself.



This product can expose you to chemicals which are known in the State of California, USA to cause cancer and reproductive harm. For more information go to [www.P65Warnings.ca.gov](http://www.P65Warnings.ca.gov).

## SERVICE

All products to be returned to Axiomatic require a Return Materials Authorization Number (RMA#) from [rma@axiomatic.com](mailto:rma@axiomatic.com). Please provide the following information when requesting an RMA number:

- Serial number, part number
- Runtime hours, description of problem
- Wiring set up diagram, application and other comments as needed

## DISPOSAL

Axiomatic products are electronic waste. Please follow your local environmental waste and recycling laws, regulations and policies for safe disposal or recycling of electronic waste.

## CONTACTS

**Axiomatic Technologies Corporation**  
1445 Courtneypark Drive E.  
Mississauga, ON  
CANADA L5T 2E3  
TEL: +1 905 602 9270  
FAX: +1 905 602 9279  
[www.axiomatic.com](http://www.axiomatic.com)  
[sales@axiomatic.com](mailto:sales@axiomatic.com)

**Axiomatic Technologies Oy**  
Höytämöntie 6  
33880 Lempäälä  
FINLAND  
TEL: +358 103 375 750  
[www.axiomatic.com](http://www.axiomatic.com)  
[salesfinland@axiomatic.com](mailto:salesfinland@axiomatic.com)