



**USER MANUAL UMAX022460**  
**UMAX022460-03**  
**UMAX022460-04**

# **2 BIPOLAR INPUTS, 4 PULSE VALVE OUTPUTS CONTROLLER WITH CAN, SAE J1939**

## **USER MANUAL**

**P/N: AX022460**

**P/N: AX022460-03 (33Hz pulse frequency)**

**P/N: AX022460-04 (75Hz pulse frequency)**

## VERSION HISTORY

<b>Version</b>	<b>Date</b>	<b>Author</b>	<b>Modification</b>
1.00	Jan 8, 2020	Ilona Korpelainen	Initial Draft
1.00A	Jan 29, 2020	Ilona Korpelainen	-Removed mentions of input 3 and 4 -Updated appendix A, technical specification
1.00B	Mar 17, 2020	Ilona Korpelainen	-Updated input scan time to reflect current firmware - New dimensional drawing - Added -03 and -04 PNs - Fixed 74Hz to 75Hz
1.00C	August 9, 2023	Kiril Mojsov	Performed Legacy Updates

## ACRONYMS

ACK	Positive Acknowledgement (from SAE J1939 standard)
BATT +/-	Battery positive (a.k.a. Vps) or Battery Negative (a.k.a. GND)
DIN	Digital Input used to measure active high or low signals
DM	Diagnostic Message (from SAE J1939 standard)
DTC	Diagnostic Trouble Code (from SAE J1939 standard)
EA	The Axiomatic Electronic Assistant (A Service Tool for Axiomatic ECUs)
ECU	Electronic Control Unit (from SAE J1939 standard)
GND	Ground reference (a.k.a. BATT-)
I/O	Inputs and Outputs
MAP	Memory Access Protocol
NAK	Negative Acknowledgement (from SAE J1939 standard)
NFC	Near Field Communication
PDU1	A format for messages that are to be sent to a destination address, either specific or global (from SAE J1939 standard)
PDU2	A format used to send information that has been labeled using the Group Extension technique and does not contain a destination address.
PGN	Parameter Group Number (from SAE J1939 standard)
PropA	Message that uses the Proprietary A PGN for peer-to-peer communication
PropB	Message that uses a Proprietary B PGN for broadcast communication
PWM	Pulse Width Modulation
RPM	Rotations per Minute
SPN	Suspect Parameter Number (from SAE J1939 standard)
TP	Transport Protocol
UIN	Universal input used to measure voltage, current, frequency or digital inputs
Vps	Voltage Power Supply (a.k.a. BATT+)
%dc	Percent Duty Cycle (Measured from a PWM input)

**Note:**

An Axiomatic Electronic Assistant KIT may be ordered as P/N: AX070502 or AX070506K

# TABLE OF CONTENTS

<b>1. OVERVIEW OF CONTROLLER</b> .....	<b>9</b>
1.1. Input Function Blocks .....	10
1.2. Input Filtering .....	13
1.3. Output Function Blocks .....	13
1.4. Diagnostic Function Blocks .....	15
1.5. Control Variable Data Blocks.....	18
1.6. PID Control Function Block .....	19
1.7. Lookup Table Function Block .....	21
1.8. Programmable Logic Function Block.....	22
1.9. Math Function Block .....	23
1.10. Delay Timer Block.....	24
1.11. Hysteresis Block .....	25
1.12. Conditional Logic Function Blocks.....	25
1.13. Set / Reset Function Block .....	26
1.14. CAN Transmit Message Function Block.....	27
1.14.1. CAN Transmit Message Setpoints .....	27
1.14.2. CAN Transmit Signal Setpoints .....	27
1.15. CAN Receive Function Block .....	28
1.16. DTC React .....	30
1.17. Available Control Sources .....	30
<b>2. INSTALLATION INSTRUCTIONS</b> .....	<b>32</b>
2.1. Dimensions and Pinout.....	32
<b>3. OVERVIEW OF J1939 FEATURES</b> .....	<b>33</b>
3.1. Introduction to Supported Messages.....	33
3.2. NAME, Address and Software ID .....	34
<b>4. ECU SETPOINTS ACCESSED WITH THE AXIOMATIC ELECTRONIC ASSISTANT</b> .....	<b>36</b>
4.1. J1939 Network Parameters .....	37
4.2. Bipolar Universal Input Setpoints .....	38
4.3. Pulse Valve Output Setpoints .....	39
4.4. Constant Data List Setpoints .....	40
4.5. Variable Data List Setpoints .....	40
4.6. PID Control Setpoints .....	41
4.7. Lookup Table Setpoints .....	43
4.8. Programmable Logic Setpoints .....	45
4.9. Math Function Block Setpoints .....	48
4.10. Delay Timer Block Setpoints .....	50
4.11. Hysteresis Block Setpoints .....	50
4.12. Conditional Block Setpoints .....	51
4.13. Set-Reset state Setpoints .....	52
4.14. CAN Transmit Setpoints .....	53

4.15. CAN Receive Setpoints ..... 56

4.16. DTC React Setpoints ..... 57

4.17. General Diagnostics Options Setpoints..... 57

4.18. Diagnostics Blocks Setpoints ..... 58

**5. REFLASHING OVER CAN WITH THE AXIOMATIC EA BOOTLOADER..... 62**

**APPENDIX A - TECHNICAL SPECIFICATION.....A-1**

Table 1 – Input Sensor Type Options.....	11
Table 2 – Software Debounce Filter Times .....	11
Table 3 – Debounce Time Options.....	11
Table 4 – Pullup/Pulldown Resistor Options .....	11
Table 5 – Active High/Low Options .....	12
Table 6 – Digital Input Sensor Type versus Input State .....	12
Table 7 – Filter Type Options .....	13
Table 8 – Pulse Valve Output PWM Frequency Options .....	13
Table 9 – Fault Response Options.....	14
Table 10 – Lamp Set by Event in DM1 Options .....	17
Table 11 – FMI for Event Options.....	18
Table 12 – Low Fault FMIs and corresponding High Fault FMIs .....	18
Table 13 – PID Response Options .....	19
Table 14 – X-Axis Type Options.....	21
Table 15 – PointN – Response Options .....	21
Table 16 – Table X – Condition Y, Operator Options.....	22
Table 17 – Table X – Conditions Logical Operator Options.....	22
Table 18 – Math function X Operator Options.....	24
Table 19 – Available operations for Operator 1 and Operator 2 .....	26
Table 20 – Available operations for Operator 3.....	26
Table 21 – Set-Reset Function block operation .....	26
Table 22 – CAN Transmit Data Type Options.....	28
Table 23 – Available Control Sources and Numbers .....	31
Table 24 – AX022460 Connector Pinout.....	32
Table 25 – J1939 Network Setpoints.....	37
Table 26 – Universal Input Setpoints.....	38
Table 27 – Pulse Valve Output Setpoints.....	39
Table 28 – Variable Data Setpoints.....	41
Table 29 – Programmable Logic Setpoints .....	42
Table 30 – Lookup Table Setpoints.....	44
Table 31 – Programmable Logic Setpoints .....	47
Table 32 – Math Function Setpoints.....	49
Table 33 – Timer Block Setpoints.....	50
Table 34 – Hysteresis Block Setpoints .....	51
Table 35 – Conditional Block Setpoints.....	52
Table 36 – Set-Reset State Block Setpoints .....	53
Table 37 – CAN Transmit Message Setpoints .....	55
Table 38 – CAN Receive Setpoints .....	56
Table 39 – DTC React Setpoints.....	57
Table 40 – General Diagnostics Options Setpoints.....	58
Table 41 – Diagnostic Block Setpoints .....	61

Figure 1 – AX022460 Block Diagram ..... 9

Figure 2 – Double Minimum and Maximum Error Thresholds ..... 16

Figure 3 – Delay Timer output vs Time ..... 24

Figure 4 – Hysteresis ..... 25

Figure 5 – Analog source to Digital input ..... 31

Figure 6 – AX022460 Dimensional Drawing ..... 32

Figure 7 – Screen Capture of J1939 Setpoints ..... 37

Figure 8 – Screen Capture of Universal Input Setpoints ..... 38

Figure 9 – Screen Capture of Pulse Valve Output Setpoints ..... 39

Figure 10 – Screen Capture of Constant Data List Setpoints ..... 40

Figure 11 – Screen Capture of Variable Data List Setpoints ..... 41

Figure 12 - Screen Capture of PID Control Setpoints ..... 41

Figure 13 – Screen Capture of Lookup table Setpoints ..... 43

Figure 14 – Screen Capture of Programmable Logic Setpoints ..... 46

Figure 15 – Screen Capture of Math Function Block Setpoints ..... 48

Figure 16 – Screen Capture of Timer Block Setpoints ..... 50

Figure 17 – Screen Capture of Hysteresis Block Setpoints ..... 51

Figure 18 – Screen Capture of Conditional Block Setpoints ..... 52

Figure 19 – Screen Capture of Set-Reset State Block Setpoints ..... 53

Figure 20 – Screen Capture of CAN Transmit Message Setpoints ..... 54

Figure 21 – Screen Capture of CAN Receive Message Setpoints ..... 56

Figure 22 – Screen Capture of DTC React Setpoints ..... 57

Figure 23 – Screen Capture of General Diagnostics Options Setpoints ..... 57

Figure 24 – Screen Capture of Diagnostic Block Setpoints ..... 59

## REFERENCES

J1939	Recommended Practice for a Serial Control and Communications Vehicle Network, SAE, April 2011
J1939/21	Data Link Layer, SAE, December 2010
J1939/71	Vehicle Application Layer, SAE, March 2011
J1939/73	Application Layer-Diagnostics, SAE, February 2010
J1939/81	Network Management, SAE, May 2003
TDAX022460-03(04)	Technical Datasheet, 2BIN-4OUT-DR with CAN, Axiomatic Technologies 2020
UMAX07050x	User Manual, Axiomatic Electronic Assistant and USB-CAN, Axiomatic Technologies, August 2023

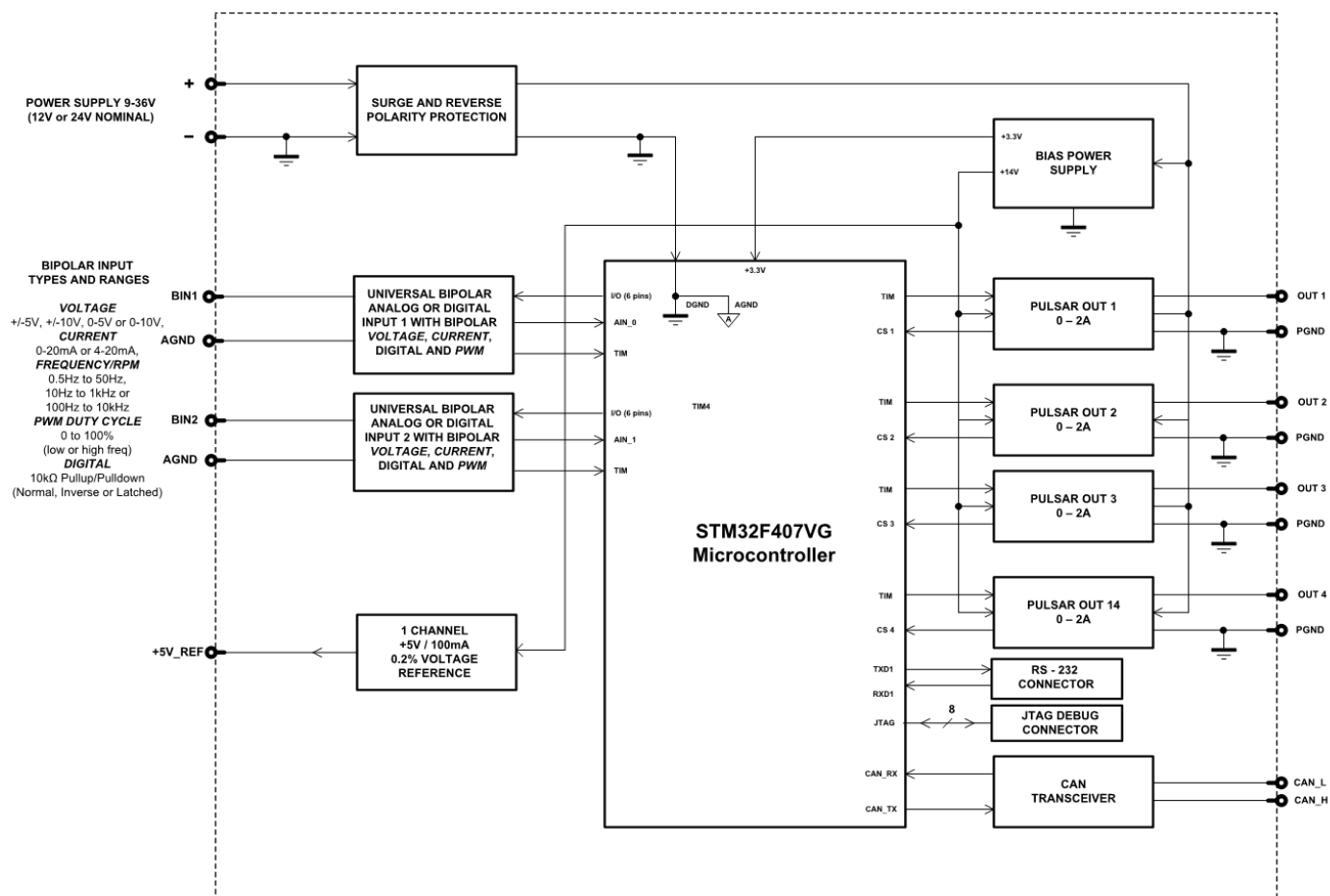
***This document assumes the reader is familiar with the SAE J1939 standard. Terminology from the standard is used, but not described in this document.***



NOTE: This product is supported by Axiomatic Electronic Assistant **VX.XX.XX** and higher.



# 1. OVERVIEW OF CONTROLLER



**Figure 1 – AX022460 Block Diagram**

The 2 Bipolar Inputs, 4 Pulse Valve Outputs Controller (2BIN-4OUT-DR) is designed to control pulse type valves with PWM modulated output signal. Its flexible circuit design gives the user a wide range of configurable input types. The sophisticated control algorithms allow the user to program the controller for a wide range of applications without the need for custom software.

The controller has two Bipolar Inputs that can be configured to measure analog bipolar voltage, analog current, frequency/PMW or digital signal. The two Universal Inputs can be configured to measure analog voltage, analog current, resistance, frequency/PWM of digital signal. In addition, the two universal inputs can be configured to form together an encoder input. Measured input data can be sent to a SAE J1939 CAN Network or used to drive outputs directly or through the configurable control algorithms.

The 4 pulse valve outputs produce pulse width modulated signal from power voltage. Outputs support both 75Hz and 33Hz frequency. The four pulse valve outputs can be configured to use any of the on-board inputs as either a control signal or an enable signal as well as SAE J1939 CAN Network data.

The *Windows*-based Axiomatic Electronic Assistant (EA) is used to configure the controller via an USB-CAN (AX070501) device. Configurable properties, Axiomatic EA setpoints, are outlined in chapter 4. Setpoint configuration can be saved in a file which can be used to easily program the same configuration into another 2BIN-4OUT-DR. Throughout this document Axiomatic EA setpoint names are referred to with bolded text in double-quotes, and the setpoint option is referred to with italicized text in single-quotes. For example, “**Input Sensor Type**” setpoint set to option ‘*Voltage 0 to 5V*’.

In this document the configurable properties of the ECU are divided into function blocks, namely Input Function Block, Output Function Block, Diagnostic Function Block, PID Control Function Block, Lookup Table Function Block, Programmable Logic Function Block, Math Function Block, Timer Block, Hysteresis Block, Conditional Block, Set-Reset State Block, CAN Transmit Message Function Block, CAN Receive Message Function Block and DTC React Function Block. These function blocks are presented in detail in next subchapters.

The 2 Bipolar Inputs, 4 Pulse Valve Outputs Controller can be ordered using the following part numbers depending on the application.

AX022460	Controller with the default J1939 baud rate (250kbits/s).
AX022460-03	Default pulse frequency 33Hz, J1939 baud rate (250kbits/s).
AX022460-04	Default pulse frequency 75Hz, J1939 baud rate (250kbits/s).

## 1.1. Input Function Blocks

The controller has two Bipolar Inputs, that can be configured to measure voltage, bipolar voltage, current, frequency/PWM or digital signal.

Input setpoint group has the “**Input Sensor Type**” setpoint, which is used to configure input type. Selecting input type effects on other setpoints and how they are interpreted and should thus be selected first on this block. All available input sensor types are listed in Table 1.

0	<i>Disabled</i>
12	<i>Voltage 0 to 5 V</i>
13	<i>Voltage 0 to 10 V</i>
14	<i>Voltage -5 to 5 V</i>
15	<i>Voltage -10 to 10 V</i>
20	<i>Current 0 to 20 mA</i>
21	<i>Current 4 to 20 mA</i>
40	<i>Frequency 0.5 to 50 Hz</i>
41	<i>Frequency 10 Hz to 1 kHz</i>
42	<i>Frequency 100 Hz to 20 kHz</i>
50	<i>PWM Low Frequency (&lt;1kHz)</i>
51	<i>PWM High Frequency (&gt;100Hz)</i>
60	<i>Digital (normal)</i>
61	<i>Digital (inverse)</i>
62	<i>Digital (latched)</i>
70	<i>Counter</i>
71	<i>Pulse Counter</i>
72	<i>Pulse Counter (both edges)</i>

**Table 1 – Input Sensor Type Options**

Bipolar Inputs analog voltage (i.e. 0-5V, 0-10V, -5–5V, -10–10V) or current (0-20mA, 4-20mA) signals go directly to a 12-bit analog-to-digital converter (ADC) on the processor. The voltage input is a high impedance input protected against shorts to GND or Vcc. In current mode, a 124Ω resistor is used to measure the input signal.

An additional software debounce filter can be used with Digital Input types for filtering the inputs using longer time constants than with the default debounce filter. The available software implemented debounce times are listed in Table 2.

0	0ms
1	10ms
2	20ms
3	40ms
4	100ms
5	200ms
6	400ms
7	1000ms

**Table 2 – Software Debounce Filter Times**

Frequency/RPM or Pulse Width Modulated (PWM) “**Input Sensor Type**” options connect an input to 16-bit timer pin on the processor. “**Debounce Time**” setpoint is used to select an input capture filter for the timer pin in question. “**Pulse Per Revolution**” setpoint is only associated with the frequency input type. If the setpoint is set to *True*, then the input data will be reported as in rotations-per-minute (RPM). Otherwise, frequency inputs are measured in Hertz.

0	None
1	111ns
2	1.78us
3	14.22us

**Table 3 – Debounce Time Options**

Bipolar Inputs have available three Digital “**Input Sensor Type**” options: Normal, Inverse and Latched. With digital input sensor types, the input measurement is given, either 1 (ON) or 0 (OFF). The Bipolar Inputs measure digital voltage with 3V threshold.

On Frequency, PWM and digital input modes 10kΩ pull-up or pull-down resistors can be enabled or disabled by setting the value of the “**Pullup/Pulldown Resistor**” setpoint. Setpoint options are given in Table 4. By default, pull-down resistors are enabled for both inputs.

0	10 kΩ Pulldown
1	10 kΩ Pullup

**Table 4 – Pullup/Pulldown Resistor Options**

“**Active High/Active Low**” setpoint is used to configure how signal high and low are interpreted. Setpoint options are given in Table 5. By default, all inputs are selected to be Active High, which means that signal high is interpreted as 1(ON) and signal low as 0(OFF).

0	Active High
1	Active Low

**Table 5 – Active High/Low Options**

Table 6 shows the effect of different digital input types on input signal measurement interpretation with recommended “**Pullup/Pulldown Resistor**” and “**Active High/Low**” combinations. Fault diagnostics are not available for digital input types.

Input Sensor Type		Pulldown Active High	Pullup Active Low	Input measured (state)
6	<i>Digital (normal)</i>	High	Low or Open	1 (ON)
		Low or Open	High	0 (OFF)
61	<i>Digital (inverse)</i>	High or Open	Low	1 (ON)
		Low	High or Open	0 (OFF)
62	<i>Digital (latched)</i>	High to Low	Low to High	0 (no change)
		Low to High	High to Low	1 (state change)

**Table 6 – Digital Input Sensor Type versus Input State**

The “**Minimum Range**” and “**Maximum Range**” setpoints are used to define range of the signal input outputs as a control source. For example, if “**Maximum Range**” is set to 4V for an input, the control signal is saturated at 4V if input signal rises above 4V. The “**Minimum Range**” and “**Maximum Range**” setpoints are interpreted in input types units, thus they should be re-adjusted after editing “**Input Sensor Type**”.

Software filters can be applied to the measured input signal. Setpoints “**Software Filter Type**” and “**Software Filter Constant**” are used to configure the software filter. By default, no filter is applied to the signal. Software filtering is described in detail in section below.

## 1.2. Input Filtering

Measured input data from universal inputs can be filtered to form desired CAN message data. Input filters are configured with “**Filter Type**” and “**Filter Constant**” setpoints. Filters are configured for each input individually.

0	<i>No Filtering</i>
1	<i>Moving Average</i>
2	<i>Repeating Average</i>

**Table 7 – Filter Type Options**

“**Filter Type**” setpoint defines the type of software filter used. Setpoint options are ‘*No Filtering*’, ‘*Moving Average*’ and ‘*Repeating Average*’. The ‘*No Filtering*’ option applies no filtering to the measured input data. The ‘*Moving Average*’ option applies the transfer function below to the measured input data, where  $Value_N$  is the current value of the CAN message data,  $Value_{N-1}$  is the previous CAN message data and Filter Constant is the value of the “**Filter Constant setpoint**”.

Equation 1 - Moving Average Transfer Function:

$$Value_N = Value_{N-1} + \frac{(Input - Value_{N-1})}{Filter\ Constant}$$

Equation 2 - Repeating Average Transfer Function:

$$Value = \frac{\sum_0^N Input_N}{N}$$

The ‘*Repeating Average*’ option applies the transfer function above to the measured input data, where N is value of the “**Filter Constant**” setpoint. At every reading of the input value, the value is added to the sum. At every N<sup>th</sup> read, the sum is divided by N, and the result is new CAN message data. The sum is set to zero for the next read and summing is started again.

## 1.3. Output Function Blocks

The controller has four pulse valve outputs with high side sourcing up to 2.5A. Outputs 1 and 2 share a timer as well as outputs 3 and 4. Thus Output PWM Frequency will be same for the two outputs. The Output PWM frequencies are selected with “**Pulse Valve Output 1 and 2 PWM Frequency**” and “**Pulse Valve Output 3 and 4 PWM Frequency**” setpoints. Frequency options are presented in Table 8. By default, 75Hz frequency is used (33Hz for AX0224260-03).

0	75 Hz
1	33 Hz

**Table 8 – Pulse Valve Output PWM Frequency Options**

Pulse Valve Output signal minimum and maximum values are configured with “**Output At Minimum Command**” and “**Output At Maximum Command**” setpoints. Value range, for both setpoints, is 0% to 100%”.

Regardless of what type of control input is selected, the output will always respond in a linear fashion to changes in the input per Equation 3.

$$y = mx + a$$

$$m = \frac{Y_{max} - Y_{min}}{X_{max} - X_{min}}$$

$$a = Y_{min} - m * X_{min}$$

### Equation 3 - Linear Slope Calculations

In the case of the Output Control Logic function block, X and Y are defined as

Xmin = Control Input Minimum    Ymin = “**Output at Minimum Command**”

Xmax = Control Input Maximum    Ymax = “**Output at Maximum Command**”

In all cases, while X-axis has the constraint that Xmin < Xmax, there is no such limitation on the Y-axis. Thus configuring “**Output At Minimum Command**” to be greater than “**Output At Maximum Command**” allows output to follow control signal inversely.

The “**Control Source**” setpoint together with “**Control Number**” setpoint determine which signal is used to drive the output. For example, setting “**Control Source**” to ‘*Universal Input Measured*’ and “**Control Number**” to ‘1’, connects signal measured from Universal Input1 to the output in question. The input signal is scaled per input type range between 0 and 1 to form control signal. Outputs respond in a linear fashion to changes in control signal.

If a fault is detected in any of the active control input the output will respond per “**Control Fault Response**” setpoint as outlined in Table 9. Fault Value is defined by “**Output in Fault Mode**” setpoint value, which is interpreted in selected output units.

0	<i>Shutoff Output</i>
1	<i>Apply Fault Value</i>
2	<i>Hold Last Value</i>

**Table 9 – Fault Response Options**

Another fault response that can be enabled is that a power supply over voltage or under voltage will automatically disable ALL outputs. Note: this setpoint is associated with the **Power Supply Diag** function block. Also, if the **Over Temperature Diag** function block is enabled, then a microprocessor over-temperature reading disables all the outputs until it has cooled back to the operating range.

Fault detection is available for current output types. A current feedback signal is measured and compared to desired output current value. Fault detection and associated setpoints are presented in section 1.4.

The outputs are inherently protected against a short to GND or +Vps by circuitry. In case of a dead short, the hardware will automatically disable the output drive, regardless of what the processor is commanding for the output. When this happens, the processor detects output hardware shutdown and commands off the output in question. It will continue to drive non-shortened outputs normally and periodically (every 5 seconds) try to re-engage the short load, if still commanded to do so. If the fault has gone away since the last time the output was engaged while shorted, the controller will automatically resume normal operation.

In the case of an open circuit, there will be no interruption of the control for any of the outputs. The processor will continue to attempt to drive the open load.

The measured current through the load is available to be broadcasted on a CAN message if desired. It is also used as the input to the diagnostic function block for each output, and an open or shorted output can be broadcasted in a DM1 message on the CAN network

#### 1.4. Diagnostic Function Blocks

The 2BIN-4OUT-DR supports diagnostic messaging. DM1 message is a message, containing Active Diagnostic Trouble Codes (DTC) that is sent to the J1939 network in case a fault has been detected. A Diagnostic Trouble Code is defined by the J1939 standard as a four-byte value.

In addition to supporting the DM1 message, the following are supported:

SPN	Suspect Parameter Number	(user defined)
FMI	Failure Mode Identifier	(see Table 11 and Table 12)
CM	Conversion Method	(always set to 0)
OC	Occurrence Count	(number of times the fault has happened)
DM2	Previously Active Diagnostic Trouble Codes	Sent only on request
DM3	Diagnostic Data Clear/Reset of Previously Active DTCs	Done only on request
DM11	Diagnostic Data Clear/Reset for Active DTCs	Done only on request

Fault detection and reaction is a standalone functionality that can be configured to monitor and report diagnostics of various controller parameters. The 2BIN-4OUT-DR supports 16 Diagnostics Definitions, each freely configurable by the user.

By default, the monitoring of operating voltage, CPU temperature and receive message timeouts is configured to diagnostics blocks 1, 2 and 3., In case any of these three diagnostics blocks are needed for some other use, the default settings can be adjusted by the user to suit the application.

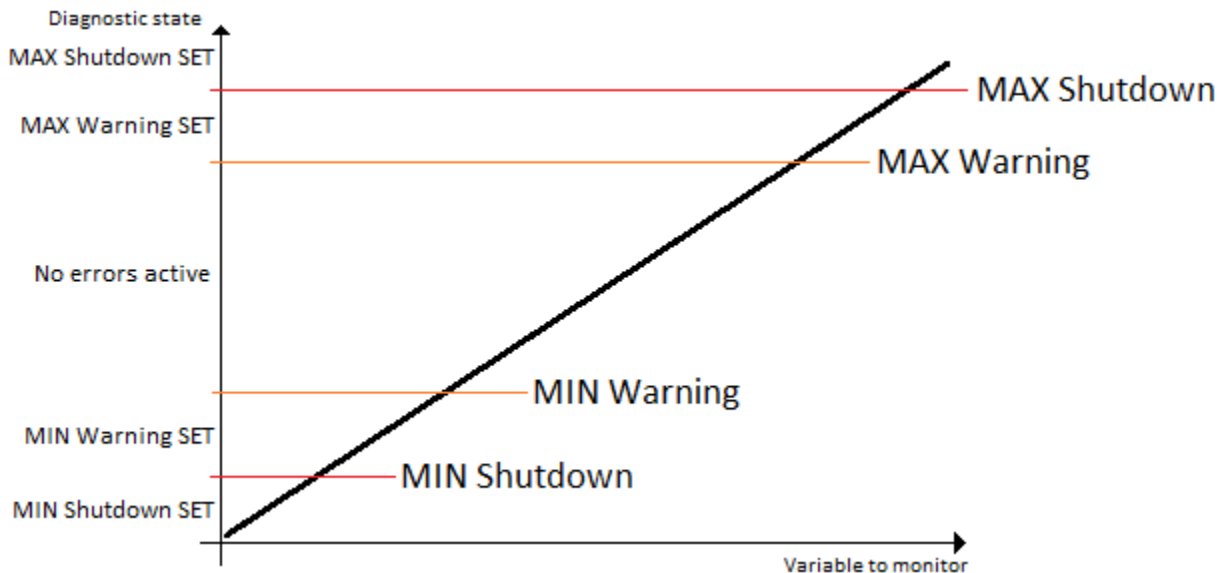
There are 4 fault types that can be used, “**Minimum and maximum error**”, “**Absolute value error**”, “**State error**” and “**Double minimum and maximum error**”.

**Minimum and maximum error** has two thresholds, “MIN Shutdown” and “MAX Shutdown” that have configurable, independent diagnostics parameters (SPN, FMI, Generate DTCs, delay before flagging status). In case the parameter to monitor stays between these two thresholds, the diagnostic is not flagged.

**Absolute value error** has one configurable threshold with configurable parameters. In case the parameter to monitor stays below this threshold, the diagnostic is not flagged.

**State error** is like the Absolute value error, the only difference is that State error does not allow the user to specify specific threshold values; thresholds '1' and '0' are used instead. This is ideal for monitoring state information, such as received message timeouts.

**Double minimum and maximum error** lets user to specify four thresholds, each with independent diagnostic parameters. The diagnostic status and threshold values is determined and expected as show in Figure 2 below.



**Figure 2 – Double Minimum and Maximum Error Thresholds**

In case any of the Diagnostics blocks is configured to monitor Output Current Feedback, there is an internal error status flag maintained automatically for that output. This internal flag can be used for driving the output to a specified state in case of diagnostic event using Proportional Current Output setpoints “Control Fault Response”, “Output in Fault Mode” and “Fault Detection Enabled”.

There is also built in error status flags for power supply and CPU temperature monitoring. In case any of the diagnostics blocks is measuring these two parameters, the corresponding internal error status flags can be used for shutting down the unit in case of failure. The setpoints “**Power Fault Disables Outputs**” and “**Over Temperature Shutdown**” can be used for enabling the shutdown of the unit (shutdown == output driving is turned off).

While there are no active DTCs, the 2BIN-4OUT-DR will send “No Active Faults” message. If a previously inactive DTC becomes active, a DM1 will be sent immediately to reflect this. As soon as the last active DTC goes inactive, a DM1 indicating that there are no more active DTCs will be sent.

If there is more than one active DTC at any given time, the regular DM1 message will be sent using a multipacket message to the Requester Address using the Transport Protocol (TP).





At power up, the DM1 message will not be broadcasted until after 5 second delay. This is done to prevent any power up or initialization conditions from being flagged as an active error on the network.

When the fault is linked to a DTC, a non-volatile log of the occurrence count (OC) is kept. As soon as the controller detects a new (previously inactive) fault, it will start decrementing the **“Delay before Event is flagged”** timer for that Diagnostic function block. If the fault has remained present during the delay time, then the controller will set the DTC to active, and will increment the OC in the log. A DM1 will immediately be generated that includes the new DTC. The timer is provided so that intermittent faults do not overwhelm the network as the fault comes and goes, since a DM1 message would be sent every time the fault shows up or goes away.

By default, the fault flag is cleared when error condition that has caused it goes away. The DTC is made Previously Active and is it is no longer included in the DM1 message. To identify a fault having happened, even if the condition that has caused is one away, the **“Event Cleared only by DM11”** setpoint can be set to *‘True’*. This configuration enables DTC to stay Active, even after the fault flag has been cleared, and be included in DM1 message until a Diagnostic Data Clear/Reset for Active DTCs (DM11) has been requested.

As defined by J1939 Standard the first byte of the DM1 message reflects the Lamp status. **“Lamp Set by Event”** setpoint determines the lamp type set in this byte of DTC. **“Lamp Set by Event”** setpoint options are listed in Table 10. By default, the *‘Amber, Warning’* lamp is typically the one set be any active fault.

0	<i>Protect</i>
1	<i>Amber Warning</i>
2	<i>Red Stop</i>
3	<i>Malfunction</i>

**Table 10 – Lamp Set by Event in DM1 Options**

**“SPN for Event”** defines suspect parameter number used as part of DTC. The default value zero is not allowed by the standard, thus no DM will be sent unless **“SPN for Event”** in is configured to be different from zero. **It is user’s responsibility to select SPN that will not violate J1939 standard.** When the **“SPN for Event”** is changed, the OC of the associated error log is automatically reset to zero.

0	<i>Data Valid But Above Normal Operational Range - Most Severe Level</i>
1	<i>Data Valid But Below Normal Operational Range - Most Severe Level</i>
2	<i>Data Intermittent</i>
3	<i>Voltage Above Normal, Or Shorted To High Source</i>
4	<i>Voltage Below Normal, Or Shorted To Low Source</i>
5	<i>Current Below Normal Or Open Circuit</i>
6	<i>Current Above Normal Or Grounded Circuit</i>
7	<i>Mechanical Error</i>
8	<i>Abnormal Frequency Or Pulse Width Or Period</i>
9	<i>Abnormal Update Rate</i>
10	<i>Abnormal Rate Of Change</i>

11	<i>Root Cause Not Known</i>
12	<i>Bad Component</i>
13	<i>Out Of Calibration</i>
14	<i>Special Instructions</i>
15	<i>Data Valid But Above Normal Operating Range – Least Severe Level</i>
16	<i>Data Valid But Above Normal Operating Range – Moderately Severe Level</i>
17	<i>Data Valid But Below Normal Operating Range – Least Severe Level</i>
18	<i>Data Valid But Below Normal Operating Range – Moderately Severe Level</i>
19	<i>Network Error</i>
20	<i>Data Drifted High</i>
21	<i>Data Drifted Low</i>
31	<i>Condition Exists</i>

**Table 11 – FMI for Event Options**

Every fault has associated a default FMI with them. The used FMI can be configured with “**FMI for Event**” setpoint, presented in Table 11. When an FMI is selected from Low Fault FMIs in Table 12 for a fault that can be flagged either high or low occurrence, it is recommended that the user would select the high occurrence FMI from the right column of Table 12. There is no automatic setting of High and Low FMIs in the firmware, the user can configure these freely.

Low Fault FMIs	High Fault FMIs
<i>FMI=1, Data Valid But Below Normal Operation Range – Most Severe Level</i>	<i>FMI=0, Data Valid But Above Normal Operational Range – Most Severe Level</i>
<i>FMI=4, Voltage Below Normal, Or Shorted to Low Source</i>	<i>FMI=3, Voltage Above Normal, Or Shorted To High Source</i>
<i>FMI=5, Current Below Normal Or Open Circuit</i>	<i>FMI=6, Current Above Normal Or Grounded Circuit</i>
<i>FMI=17, Data Valid But Below Normal Operating Range – Least Severe Level</i>	<i>FMI=15, Data Valid But Above Normal Operating Range – Least Severe Level</i>
<i>FMI=18, Data Valid But Below Normal Operating Level – Moderately Severe Level</i>	<i>FMI=16, Data Valid But Above Normal Operating Range – Moderately Severe Level</i>
<i>FMI=21, Data Drifted Low</i>	<i>FMI=20, Data Drifted High</i>

**Table 12 – Low Fault FMIs and corresponding High Fault FMIs**

### 1.5. Control Variable Data Blocks

In case run time settable, non-volatile data is required in the control algorithm, the Control Variable Data Blocks offer one possible solution. These function blocks contain a single variable with rules for updating the value at run time, without the need for the user to trigger the variable update process as it is done with the Control Constant Data Blocks.

The “**Variable Value**” setpoint shows the current value for the variable. This setpoint is user configurable, so it is possible to modify the value using the Axiomatic EA.

“**Variable Value Data Source**” and “**Variable Data Data Number**” define the source from which the new Variable Data value is read at update event.

The variable data update process is controlled using the next five setpoints, namely “**Variable Value Update Trigger Source**”, “**Variable Value Update Trigger Number**”, “**Variable Value Update Trigger Threshold Source**”, “**Variable Value Update Trigger Threshold Number**” and “**Variable Value Update Function**”. The trigger number and source define the control signal to be compared with the trigger threshold control signal. The comparison is done using the logical (or mathematical) operator that can be selected using “**Variable Value Update Function**” setpoint.

In case the logical operation evaluates as *True* (for the Math functions, greater than zero) the variable data value is updated from the selected data source and the new value is stored into Flash memory. The save is done only once per evaluating the update function as *True*. Before the next save can happen, the update function must evaluate as *False* (for the Math functions, equal to zero) at least once. Also, the minimum time between two variable data saving events is set to 10 seconds (not user configurable limit).

## 1.6. PID Control Function Block

The PID Control function block is an independent logic block, but it is normally intended to be associated with proportional output control blocks described earlier. When the “**Control Source**” for an output has been setup as a ‘*PID Function Block*’, the command from the selected PID block drives the physical output on the 2BIN-4OUT-DR.

The “**PID Target Command Source**” and “**PID Target Command Number**” setpoints determine control input and the “**PID Feedback Input Source**” and “**PID Feedback Input Number**” setpoints determine the established the feedback signal to the PID function block. The “**PID Response Profile**” will use the selected inputs as per the options listed in Table 13. When active, the PID algorithm will be called every “**PID Loop Update Rate**” in milliseconds.

0	<i>Single Output</i>
1	<i>Setpoint Control</i>
2	<i>On When Over Target</i>
3	<i>On When Below Target</i>

**Table 13 – PID Response Options**

When a ‘*Single Output*’ response is selected, the Target and Feedback inputs do not have to share the same units. In both cases, the signals are converted to a percentage values based on the minimum and maximum values associated with the source function block.

For example, a CAN command could be used to set the target value, in which case it would be converted to a percentage value using “**Receive Data Min**” and “**Receive Data Max**” setpoints in the appropriate ‘*CAN Receive X*’ function block. The closed-loop feedback signal (i.e. a 0-5V input) could be connected to ‘*Universal Input 1*’ and selected as the feedback source. In this case the value of the input would be converted to a percentage based on the “**Minimum Range**” and “**Maximum Range**” setpoints in the input block. The output of the PID function would depend on the difference between the commanded target and the measured feedback as a percentage of each signals range. In this mode, the output of the block would be a value from -100% to 100%.

When a 'Setpoint Control' response is selected, the "PID Target Command Source" automatically gets updated to 'Control Constant Data' and cannot be changed. The value set in the associated constant in the Constant Data List function block becomes the desired target value. In this case, both the target and the feedback values are assumed to be in same units and range. The minimum and maximum values for the feedback automatically become the constraints on the constant target. In this mode, the output of the block would be a value from 0% to 100%.

For example, if the feedback was setup as a 4-20mA input, a "Constant Value X" setpoint set to 14.2 would automatically be converted to 63.75%. The PID function would adjust the output as needed to have the measured feedback to maintain that target value.

The last two response options, 'On When Over Target' and 'On When Under Target', are designed to allow the user to combine the two proportional outputs as a push-pull drive for a system. Both outputs must be setup to use the same control input (linear response) and feedback signal in order to get the expected output response. In this mode, the output would be between 0% to 100%.

In Order to allow the output to stabilize, the user can select a non-zero value for "PID Delta Tolerance". If the absolute value of  $Error_k$  is less than this value,  $Error_k$  in the formula below will be set to zero.

The PID algorithm used is shown below, where  $G$ ,  $K_i$ ,  $T_i$ ,  $K_d$ ,  $T_d$  and  $Loop\_Update\_Rate$  are configurable parameters.

$$PIDOutput_k = P_k + I_k + D_k$$

$$P_k = P\_Gain * Error_k$$

$$I_k = I\_Gain * ErrorSum_k$$

$$D_k = D\_Gain * (Error_k - Error_{k-1})$$

$$Error_k = Target - Feedback$$

$$ErrorSum_k = ErrorSum_{k-1} + Error_k$$

$$P\_Gain = G$$

$$I\_Gain = G * K_i * T / T_i \text{ (Note: If } T_i \text{ is zero, } I\_Gain = 0)$$

$$D\_Gain = G * K_d * T_d / T$$

$$T = Loop\_Update\_Rate * 0.001$$

#### Equation 4 - PID Control Algorithm

Each system will have to be turned for the optimum output response. Response times, overshoots and other variables will have to be decided by the customer using an appropriate PID tuning strategy. Axiomatic is not responsible for tuning the control system.

## 1.7. Lookup Table Function Block

Lookup Tables are used to give output response up to 10 slopes per input. If more than 10 slopes are required, A Programmable Logic Block can be used to combine up to three tables to get 30 slopes as described in Section 1.8.

Lookup tables have three differing modes defined by “**X-Axis Type**” setpoint, given in Table 14. Option ‘0 – Data Response’ is the normal mode where block input signal is selected with the “**X-Axis Source**” and “**X-Axis Number**” setpoints and X values present directly input signal values. With option ‘1 – Time Response’ the input signal is time and X values present time in milliseconds. And selected input signal is used as digital enable. Option ‘2 – Enabled Data Response’ works like the Data Response option with a configurable threshold for the input signal to enable and disable the output. The output value in ‘disabled’ mode can be defined by the user with “**Output value when disabled**” setpoint.

The Enabled Data Response X-Axis type is targeted for joystick applications, where it is needed to disable the output drive when joystick position exceeds a certain threshold and can be enabled only when the joystick is returned to neutral position.

0	<i>Data Response</i>
1	<i>Time Response</i>
2	<i>Enabled Data Response</i>

**Table 14 – X-Axis Type Options**

The slopes are defined with (x, y) points and associated point response. X value presents input signal value and Y value corresponding Lookup Table output value. “PointN – Response” setpoint defines type of the slope from preceding point to the point in question. Response options are given in Table 15. ‘Ramp To’ gives a linearized slope between points, whereas ‘Jump to’ gives a point to point response, where any input value between  $X_{N-1}$  and  $X_N$  will result Lookup Table output being  $Y_N$ . “Point0 – Response” is always ‘Jump To’ and cannot be edited. Choosing ‘Ignored’ response causes associated point and all the following points to be ignored.

0	<i>Ignore</i>
1	<i>Ramp To</i>
2	<i>Jump To</i>

**Table 15 – PointN – Response Options**

In case Time Response is used, the “**Autocycle**” setpoint can be used for generating a repeating, cyclic output while the selected control source enables the time response output of the particular lookup table.

The X values are limited by minimum and maximum range of the selected input source if the source is one of the Input Blocks or a Math Function Block. For the fore mentioned sources X-Axis data will be redefined when ranges are changed, therefore inputs should be adjusted before changing X-Axis values. For other sources Xmin and Xmax are 0 and 10,000. The X-Axis is constraint to be in rising order, thus value of the next index is greater than or equal to preceding one. Therefore, when adjusting the X-Axis data, it is recommended that  $X_{10}$  is changed first, then lower indexes in descending order.

$$X_{min} \leq X_0 \leq X_1 \leq X_2 \leq X_3 \leq X_4 \leq X_5 \leq X_6 \leq X_7 \leq X_8 \leq X_9 \leq X_{10} \leq X_{max}$$

The Y-Axis has no constraints on the data it presents, thus inverse, decreasing, increasing or other response can be easily established. The Smallest of the Y-Axis values is used as Lookup Table output min and the largest of the Y-Axis values is used as Lookup Table output max (i.e. used as Xmin and Xmax values in linear calculation, Section 1.3). Ignored points are not considered for min and max values.

### 1.8. Programmable Logic Function Block

The Programmable Logic Function Block is very powerful tool. A Programmable Logic can be linked to up to three Lookup Tables, any of which would be selected only under given conditions. Thus, output of a Programmable Logic at any given time will be the output of the Lookup Table selected by defined logic. Therefore, up to three different responses to the same input, or three different responses to different inputs, can become the input to another function block.

In order to enable any one of the Programmable Logic blocks, the “**Programmable Logic Enabled**” setpoint must be set to ‘*True*’. By default, all Logic blocks are disabled.

The three associated tables are selected by setting “**Table X – Lookup Table Block Number**” setpoint to desired Lookup Table number, for example selecting 1 would set Lookup Table 1 as TableX.

For each TableX there are three conditions that define the logic to select the associated Lookup Table as Logic output. Each condition implements function *Argument1 Operator Argument2* where Operator is logical operator defined by setpoint “**Table X – Condition Y, Operator**”. Setpoint options are listed in Table 16. Condition arguments are selected with “**Table x – Condition Y, Argument Z Source**” and “**Table x – Condition Y, Argument Z Number**” setpoints. If ‘0 – Control not Used’ option is selected as “**Table x – Condition Y, Argument Z Source**” the argument is interpreted as 0.

0	=, <i>Equal</i>
1	!=, <i>Not Equal</i>
2	>, <i>Greater Than</i>
3	>=, <i>Greater Than or Equal</i>
4	<, <i>Less Than</i>
5	<=, <i>Less Than or Equal</i>

**Table 16 – Table X – Condition Y, Operator Options**

The three conditions are evaluated and if the result satisfies logical operation defined with “**Table X – Conditions Logical Operator**” setpoint, given in Table 17, the associated Lookup Table is selected as output of the Logical block. Option ‘0 – Default Table’ selects associated Lookup Table in all conditions.

0	<i>Default Table (Table1)</i>
1	<i>Cnd1 And Cnd2 And Cnd3</i>
2	<i>Cnd1 Or Cnd2 Or Cnd3</i>
3	<i>(Cnd1 And Cnd2) Or Cnd3</i>
4	<i>(Cnd1 Or Cnd2) And Cnd3</i>

**Table 17 – Table X – Conditions Logical Operator Options**

The three logical operations are evaluated in order and the first to satisfy gets selected, thus if Table1 logical operation is satisfied, the Lookup Table associated with Table1 gets selected regardless of two other logical operations. In addition, if none of the logical operations is satisfied the Lookup Table associated with Table1 gets selected.

## 1.9. Math Function Block

There are six mathematical function blocks that allow the user to define basic algorithms. Two of the Math blocks, Math Function Block 1 and Math Function 2, are full sized math function blocks, that can take up to five input signals and have four selectable functions. The rest of the Math Function Blocks, from Small Math Function Bock 3 to Small Math Function Bock 6, are smaller simplified version of math blocks, that can take up to two input signals and have only one selectable function. Otherwise, all Math Blocks function similarly.

Inputs are converted into percentage value based on the “**Function X Input Y Minimum**” and “**Function X Input Y Maximum**” values selected. For additional control the user can also adjust the “**Function X Input Y Scaler**”. By default, each input has a scaling ‘weight’ of 1.0 However, each input can be scaled from -1.0 to 1.0 as necessary before it is applied in the function.

For example, in the case where the user may want to combine two inputs such that a joystick (Input 1) is the primary control of an output, but the speed can be incremented or decremented based on a potentiometer (Input 2), it may be desired that 75% of the scale is controlled by the joystick position, while the potentiometer can increase or decrease the min/max output by up to 25%. In this case, Input 1 would be scaled with 0.75, while Input 2 uses 0.25. The resulting addition will give a command from 0 to 100% based on the combined positions of both inputs.

A mathematical function block includes four selectable functions, which each implements equation  $A \text{ operator } B$ , where A and B are function inputs and operator is function selected with setpoint “**Math function X Operator**”. Setpoint options are presented in Table 18. The functions are connected together, so that result of the preceding function goes into Input A of the next function. Thus Function 1 has both Input A and Input B selectable with setpoints, where Functions 2 to 4 have only Input B selectable. Input is selected by setting “**Function X Input Y Source**” and “**Function X Input Y Number**”. If “**Function X Input B Source**” is set to 0 ‘Control not used’ signal goes through function unchanged.

$$\text{Math Block Output} = (((A1 \text{ op1 } B1) \text{ op2 } B2) \text{ op3 } B3) \text{ op4 } B4$$

0	=, True when InA equals InB
1	!=, True when InA not equal InB
2	>, True when InA greater than InB
3	>=, True when InA greater than or equal InB
4	<, True when InA less than InB
5	<=, True when InA less than or equal InB
6	OR, True when InA or InB is True
7	AND, True when InA and InB are True
8	XOR, True when either InA or InB is True, but not both
9	+, Result = InA plus InB
10	-, Result = InA minus InB

11	<i>x</i> , Result = InA times InB
12	<i>/</i> , Result = InA divided by InB
13	<i>MIN</i> , Result = Smallest of InA and InB
14	<i>MAX</i> , Result = Largest of InA and InB
15	<i>MAX-MIN</i> , Result = Absolute value of (InA – InB)
16	<i>SIN</i> , Result = InA * SIN(InB)
17	<i>COS</i> , Result = InA * COS(InB)
18	<i>SQRT</i> , Result = InA * SQRT(InB)

**Table 18 – Math function X Operator Options**

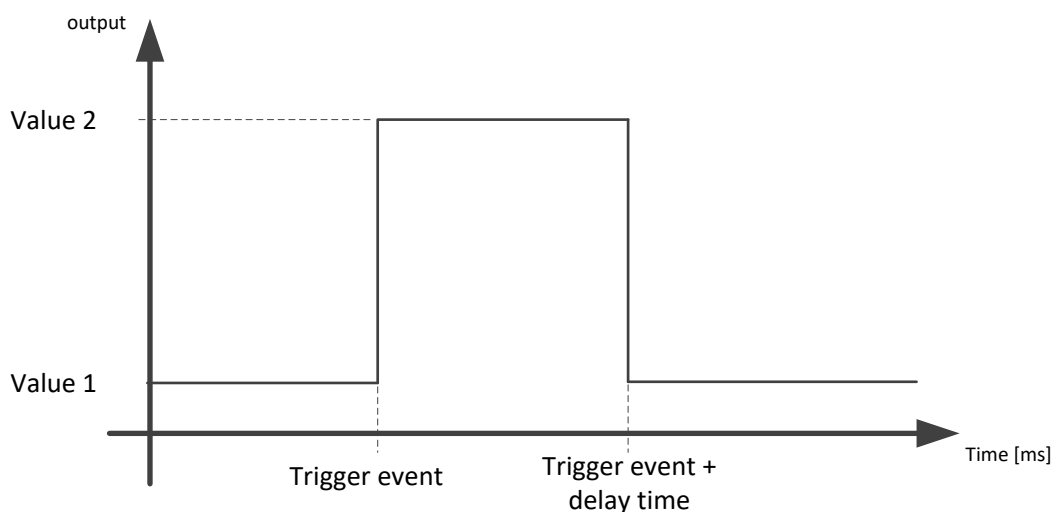
For logic operations (6, 7, 8) scaled input greater or equal to 1 is treated as TRUE. For logic operations (0 to 5), the result of the function will always be 0 (FALSE) or 1 (TRUE). For the arithmetic functions (9 to 14), it is recommended to scale the data such that the resulting operation will not exceed full scale (0 to 100%) and saturate the output result.

When dividing, a zero divider will always result in a 100% output value for the associated function.

Lastly the resulting mathematical calculation, presented as a percentage value, can be scaled into the appropriate physical units using the “**Math Output Minimum Range**” and “**Math Output Maximum Range**” setpoints. These values are also used as the limits when the Math Function I selected as the input source for another function block.

### 1.10. Delay Timer Block

The Delay Timer Block implements a user configurable delay. The delay start is triggered by monitoring using a data source and comparing that with a threshold value using a logic operation. All the different data sources and the logic operation to use for evaluating the trigger event are user configurable.



**Figure 3 – Delay Timer output vs Time**

Figure 3 shows the operation of the Delay Timer Block. When the block is inactive or the timer has elapsed, the output value is equal to what is configured using “**Timer Data 1 Source**” and “**Timer**

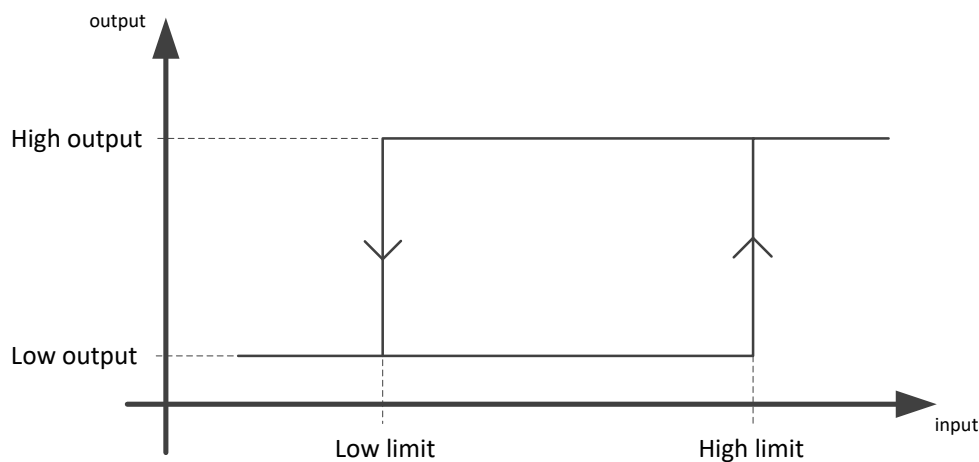


**Data 1 Number**". When the timer is counting down from "**Timer Reload Value**" to 0, the output of the Timer Block is equal to what is configured using "**Timer Data 2 Source**" and "**Timer Data 2 Number**"

The Timer block starts counting down when the logic involving data ("**Timer Trigger Source**") compared with threshold ("**Timer Trigger Threshold**") using the operation defined with "**Timer Trigger Function**" becomes true.

### 1.11. Hysteresis Block

The Hysteresis Block implements a hysteresis function with configurable high and low limits. Also, the output high and low values are user configurable.



**Figure 4 – Hysteresis**

As shown in Figure 4, when the input data from "**Data Source**" and "**Data Number**" is higher than the '**High Threshold**', the block output is set to a value defined using "**High Output Data Source**" and "**High Output Data Number**".

When the input data from "**Data Source**" and "**Data Number**" is lower than the "**Low Threshold**", the block output is set to a value defined using "**Low Output Data Source**" and "**Low Output Data Number**".

### 1.12. Conditional Logic Function Blocks

The Simple Conditional Logic Blocks provide a way of connecting different blocks and comparing them to one another. The output of the Conditional Logic Blocks is either 0 (FALSE) or 1 (TRUE).

There are three operations that take place in the Conditional Logic Blocks which allows the user to make more elaborate comparisons. The first two operations, '**Operator 1 (Input 1, Input 2)**' and

'Operator 2 (Input 3, Input4)' compare two separate values from different selectable control sources. The operations for these two operators are listed in Table 22.

Value	Operation	Meaning
0	<i>Not Used</i>	<i>Result = False</i>
1	=	<i>True when InA Equals InB</i>
2	!=	<i>True when InA Not Equal InB</i>
3	>	<i>True when InA Greater Than InB</i>
4	>=	<i>True when InA Greater Than or Equal InB</i>
5	<	<i>True when InA Less Than InB</i>
6	<=	<i>True when InA Less Than or Equal InB</i>
7	OR	<i>True when InA or InB is True</i>
8	AND	<i>True when InA and InB are True</i>
9	XOR	<i>True when InA/InB is True, but not both</i>

**Table 19 – Available operations for Operator 1 and Operator 2**

The last operation is used between the results of both Operator 1 and Operator 2 using logic gates operations. The list of available operations for 'Operator 3 (Operator 1, Operator 2)' are listed in Table 23.

Value	Operation	Meaning
0	<i>Not Used</i>	<i>Result = False</i>
1	OR	<i>True when Op1 or Op2 is True</i>
2	AND	<i>True when Op1 and Op2 are True</i>
3	XOR	<i>True when Op1/Op2 is True, but not both</i>

**Table 20 – Available operations for Operator 3**



When configuring a Conditional Block and only one comparison is needed, it is necessary that operation selected for 'Operator 3 (Operator 1, Operator 2)' is set to 1 ('OR, True When Op1 or Op2 is True')

### 1.13. Set / Reset Function Block

**Set-Reset Block** consists of only 2 control sources: **Reset Source** and **Set Source**. The purpose of these blocks is to simulate a modified latching function in which the 'Reset Signal' has more precedence. The 'latching' function works as per the Table 24 below.

'Set Signal'	'Reset Signal'	'Set-Reset Block Output' (Initial State: OFF)
OFF	OFF	<i>Latched State</i>
OFF	ON	OFF
ON	OFF	ON
ON	ON	OFF

**Table 21 – Set-Reset Function block operation**

The **Reset** and **Set** sources have associated with them a minimum and maximum threshold values which determine the ON and OFF state. For the **Reset Source** are **Reset Minimum Threshold** and **Reset Maximum Threshold**. Similarly, for the **Set Source** are **Set Minimum Threshold** and **Set Maximum Threshold**. These setpoints also allow to have a dead band in between ON/OFF states and they are in terms of percentage of input selected.

As seen in Table 24 above, the 'Reset Signal' has more precedence over the 'Set Signal' - if the state of 'Reset Signal' is *ON*, the state of 'Set-Reset Block Output' will be *OFF*. To create an *ON* state in 'Set-Reset Block Output' the state of 'Reset Signal' must be *OFF* while the state of 'Set Signal' is *ON*. In this case, the state of 'Set-Reset Block Output' will remain *ON* even if 'Set Signal' turns *OFF* as long as 'Reset Signal' remains *OFF*. As soon as the 'Reset Signal' turns *ON* the 'Set-Reset Block Output' will turn *OFF* regardless of the state of 'Set Signal'.

## 1.14. CAN Transmit Message Function Block

The CAN Transmit function block is used to send any output from another function block (i.e. input, CAN receive) to the J1939 network. The AX022460 ECU has six CAN Transmit Messages and each message has four completely user defined signals.

### 1.14.1. CAN Transmit Message Setpoints

Each CAN Transmit Message setpoint group includes setpoints that effect the whole message and are thus mutual for all signals of the message. These setpoints are presented in this section. The setpoints that configure an individual signal are presented in next section.

The "**Transmit PGN**" setpoint sets PGN used with the message. **User should be familiar with the SAE J1939 standard and select values for PGN/SPN combinations as appropriate from section J1939/71.**

"**Repetition Rate**" setpoint defines the interval used to send the message to the J1939 network. If the "**Repetition Rate**" is set to zero, the message is disabled unless it shares its PGN with another message. In case of a shared PGN repetition rate of the LOWEST numbered message are used to send the message 'bundle'.



At power up, transmitted message will not be broadcasted until after a 5 second delay. This is done to prevent any power up or initialization conditions from creating problems on the network.

By default, all messages are sent on Proprietary B PGNs as broadcast messages. Thus "**Transmit Message Priority**" is always initialized to 6 (low priority) and the "**Destination Address**" setpoint is not used. This setpoint is only valid when a PDU1 PGN has been selected, and it can be set either to the Global Address (0xFF) for broadcasts or sent to a specific address as setup by the user.

### 1.14.2. CAN Transmit Signal Setpoints

Each CAN transmit message has four associated signals, which define data inside the Transmit message. "**Control Source**" setpoint together with "**Control Number**" setpoint define the signal

source of the message. “**Control Source**” and “**Control Number**” options are listed in Table 23. Setting “**Control Source**” to ‘*Control Not Used*’ disables the signal.

“**Transmit Data Type**” setpoint options are listed in Table 22. By default, ‘*CAN signal continuous*’ is selected and signal data is presented continuous form. If ‘*CAN signal discrete*’ the signal data is considered as digital and is interpreted as 0 below “**CAN Transmit Data Maximum**”. When ‘*CAN signal undefined*’ signal data is considered undefined and all signal bits are set to 1.

0	<i>CAN signal undefined</i>
1	<i>CAN signal discrete</i>
2	<i>CAN signal continuous</i>

**Table 22 – CAN Transmit Data Type Options**

“**Transmit Data Width**” setpoint determines how many bits signal reserves from the message. “**Transmit Data Index in Array**” determines in which of 8 bytes of the CAN message LSB of the signal is located. Similarly, “**Transmit Bit Index in Byte**” determines in which of 8 bits of a byte the LSB is located. These setpoints are freely configurable, thus **it is the User’s responsibility to ensure that signals do not overlap and mask each other.**

“**Transmit Data Resolution**” setpoint determines the scaling done on the signal data before it is sent to the bus. “**Transmit Data Offset**” setpoint determines the value that is subtracted from the signal data before it is scaled. Offset and Resolution are interpreted in units of the selected source signal.

### 1.15. CAN Receive Function Block

The CAN Receive function block is designed to take any SPN from the J1939 network and use it as an input to another function block (i.e. Outputs).

The “**Receive Message Enabled**” is the most important setpoint associated with this function block and it should be selected first. Changing it will result in other setpoints being enabled/disabled as appropriate. By default, ALL receive messages are disabled.

Once a message has been enabled, a Lost Communication fault will be flagged if that message is not received off the bud within the “**Receive Message Timeout**” period. This could trigger a Lost Communication event as described in section 1.4. In order to avoid timeouts on a heavily saturated network, it is recommended to set the period at least three times longer than the expected update rate. To disable the timeout feature, simply set this value to zero, in which case the received message will never trigger a Lost Communication fault.

By default, all control messages are expected to be sent to the 2BIN-4OUT-DR on Proprietary B PGNs. However, should a PDU1 message be selected, the 2BIN-4OUT-DR can be setup to receive it from any ECU by setting the “**Specific Address that sends the PGN**” to the Global Address (0xFF). If a specific address is selected instead, then any other ECU data on the PGN will be ignored.

The “**Receive Data Type**”, “**Receive Data Width**”, “**Receive Data Index in Array (LSB)**”, “**Receive Bit Index in Byte (LSB)**”, “**Receive Resolution**” and “**Receive Offset**” can all be used to map any SPN supported by the J1939 standard to the output data of the Received function block.

As mentioned earlier, a CAN receive function clock can be selected as the source of the control input for the output function blocks. When this is case, the “**Received Data Min (Off Threshold)**” and “**Received Data Max (On Threshold)**” setpoints determine the minimum and maximum values of the control signal. As the names imply, they are also used as the On/Off thresholds for digital output types. These values are in whatever units the data is AFTER the resolution and offset is applied to CAN receive signal.

The 2BIN-4OUT-DR I/O supports up to five unique CAN Receive Messages. Defaults setpoint values are listed in section 0.

## 1.16. DTC React

The DTC React function block is a very simple function which will allow a received DTC, sent from another ECU on a DM1 message, to disable an output or be used as input to another type of logic block. Up to five SPN/FMI combinations can be selected.

Should a DM1 message be received with the SPN/FMI combination defined, the corresponding DTC State will be set to ON. Once ON, if the same SPN/FMI combination has not been received again after 3 seconds, the DTC State will be reset to OFF.

The DTC could be used as a digital input for any function block as appropriate.

## 1.17. Available Control Sources

Many of the Function Blocks have selectable input signals, which are determined with “[Name] Source” and “[Name] Number” setpoints. Together, these setpoints uniquely select how the I/O of the various function blocks are linked together. “[Name] Source” setpoint determines the type of the source and “[Name] Number” selects the actual source if there is more than one of the same type. Available “[Name] Source” options and associated “[Name] Number” ranges are listed in Table 23. All sources, except “CAN message reception timeout”, are available for all blocks, including output control blocks and CAN Transmit messages. Thought input Sources are freely selectable, not all options would make sense for any particular input, and it is up to the user to program the controller in a logical and functional manner.

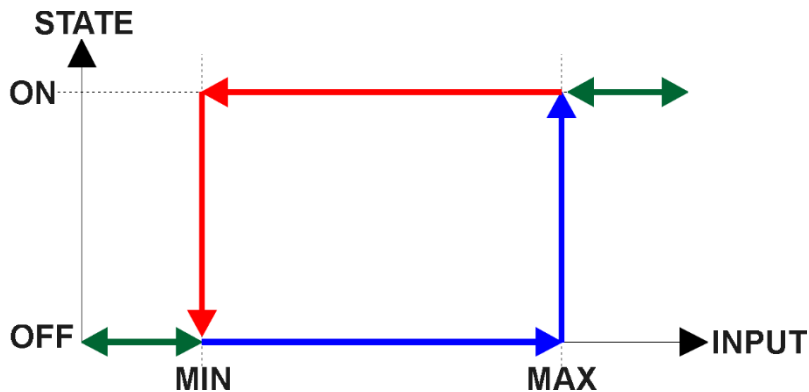
Sources	Number Range	Notes
<i>0: Control Not Used</i>	N/A	When this is selected, it disables all other setpoints associated with the signal in question.
<i>1: Received CAN Message</i>	1 to 5	User must enable the function block, as it is disabled by default.
<i>2: Input Measured</i>	1 to 2	1 – Bipolar Input1 2 – Bipolar Input2
<i>3: PID Function Block</i>	1 to 2	User must enable the function block, as it is disabled by default.
<i>4: Lookup Table</i>	1 to 8	
<i>5: Programmable Logic Block</i>	1 to 2	User must enable the function block, as it is disabled by default.
<i>6: Math Function Block</i>	1 to 6	User must enable the function block, as it is disabled by default.
<i>7: Control Constant Data</i>	1 to 15	1 = FALSE, 2 = TRUE, 3 to 15 = User Selectable
<i>8: Comparator Block</i>	1 to 2	User must enable the function block, as it is disabled by default.
<i>9: Set-Reset Block</i>	1 to 2	User must enable the function block, as it is disabled by default.
<i>10: Diagnostic Trouble Code</i>	1 to 5	Will only be valid if the corresponding DTC has a non-zero SPN
<i>11: Output Target Value</i>	1 to 4	1 – Pulse Valve Output 1 2 – Pulse Valve Output 2

		3 – Pulse Valve Output 3 4 – Pulse Valve Output 4
12: Output Current Feedback	1 to 4	Measured Feedback current from the Pulse Valve Output in mA, used in Output Diagnostics.
13: Power Supply Measured	1	Measured power supply value in Volts.
14: Processor Temperature Measured	1	Measured processor temperature in °C.
15: CAN Reception Timeout	1	
16: Control Variable Data	1 to 6	
17: Delay Timer	1 to 2	User must enable the function block, as it is disabled by default.
18: Hysteresis Block	1 to 2	User must enable the function block, as it is disabled by default.

**Table 23 – Available Control Sources and Numbers**

If a non-digital signal is selected to drive a digital input, the signal is interpreted to be OFF at or below the minimum of selected source and ON at or above the maximum of the selected source, and it will not change in between those points. Thus, analog to digital interpretation has a built-in hysteresis defined by minimum and maximum of the selected source, as shown in Figure 5. For example, Universal Input signal is interpreted to be ON at or above “Maximum Range” and OFF at or below “Minimum Range”.

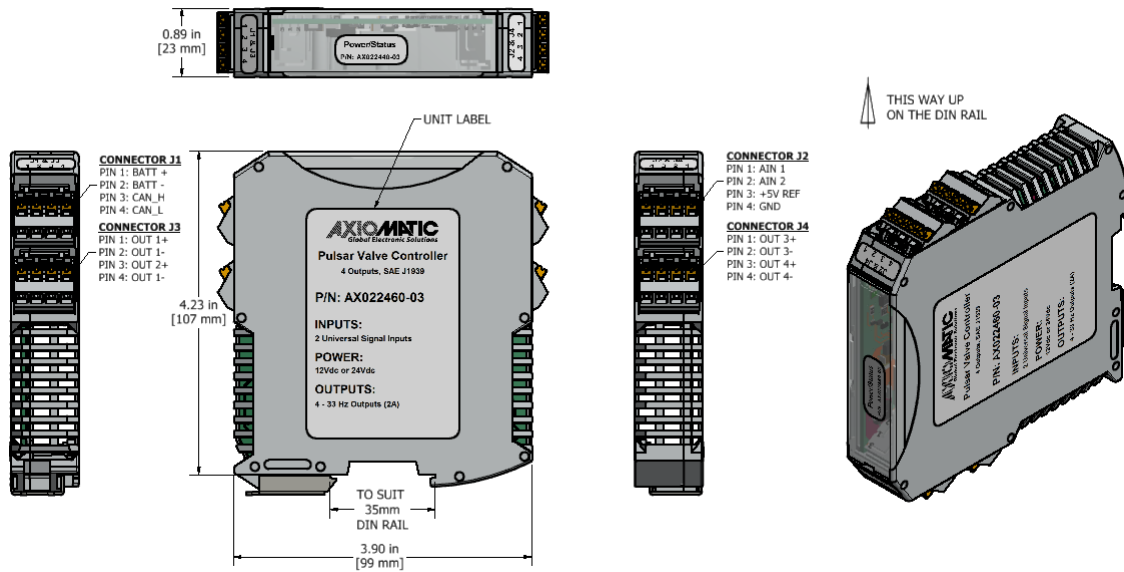
Control Constant Data has no unit nor minimum and maximum assigned to it, thus user has to assign appropriate constant values according to intended use.



**Figure 5 – Analog source to Digital input**

## 2. INSTALLATION INSTRUCTIONS

### 2.1. Dimensions and Pinout



**Figure 6 – AX022460-03 Dimensional Drawing**

Power and CAN (J1)		Outputs (J3)		Inputs (J2)		Reference and GNDs (J4)	
PIN #	Function	PIN #	Function	PIN #	Function	PIN #	Function
1	BATT +	1	Output 1+	1	Bipolar Input 1	1	Output 3+
2	BATT –	2	Output 1-	2	Bipolar Input 2	2	Output 3-
3	CAN_H	3	Output 2+	3	+5V Reference	3	Output 4+
4	CAN_L	4	Output 2-	4	Common Analog GND	4	Output 4-

**Table 24 – AX022460 Connector Pinout**



### 3. OVERVIEW OF J1939 FEATURES

---

The software was designed to provide flexibility to the user with respect to messages sent from the ECU by providing:

- Configurable ECU Instance in the NAME (to allow multiple ECUs on the same network)
- Configurable Input Parameters
- Configurable PGN and Data Parameters
- Configurable Diagnostic Messaging Parameters, as required
- Diagnostic Log, maintained in non-volatile memory

#### 3.1. Introduction to Supported Messages

The ECU is compliant with the standard SAE J1939, and supports following PGNs from the standard.

##### From J1939-21 – Data Link Layer

- Request 59904 0x00EA00
- Acknowledgement 59392 0x00E800
- Transport Protocol – Connection Management 60416 0x00EC00
- Transport Protocol – Data Transfer Message 60160 0x00EB00
- Proprietary B from 65280 0x00FF00  
to 65535 0x00FFFF

##### From J1939-73 – Diagnostics

- DM1 – Active Diagnostic Trouble Codes 65226 0x00FECA
- DM2 – Previously Active Diagnostic Trouble Codes 65227 0x00FECB
- DM3 – Diagnostic Data Clear/Reset for Previously Active DTCs 65228 0x00FECC
- DM11 – Diagnostic Data Clear/Reset for Active DTCs 65235 0x00FED3
- DM14 – Memory Access Request 55552 0x00D900
- DM15 – Memory Access Response 55296 0x00D800
- DM16 – Binary Data Transfer 55040 0x00D700

##### From J1939-81 – Network Management

- Address Claimed/Cannot Claim 60928 0x00EE00
- Commanded Address 65240 0x00FED8

##### From J1939-71 – Vehicle Application Layer

- Software Identification 65242 0x00FEDA

None of the application layer PGNs are supported as part of the default configurations, but they can be selected as desired for transmit function blocks.

Setpoints are accessed using standard Memory Access Protocol (MAP) with proprietary addresses. The Axiomatic Electronic Assistant (EA) allows for quick and easy configuration of the unit over CAN network.

### 3.2. NAME, Address and Software ID

The 2BIN-4OUT-DR I/O ECU has the following default for the J1939 NAME. The user should refer to the SAE J1939/81 standard for more information on these parameters and their ranges.

Arbitrary Address Capable	Yes
Industry Group	0, Global
Vehicle System Instance	0
Vehicle System	0, Non-specific system
Function	126, Axiomatic I/O Controller
Function Instance	19, Axiomatic AX022460
ECU Instance	0, First Instance
Manufacture Code	162, Axiomatic Technologies
Identity Number	Variable, uniquely assigned during factory programming for each ECU

The ECU Instance is a configurable setpoint associated with the NAME. Changing this value will allow multiple ECUs of this type to be distinguishable from one another when they are connected on the same network.

The default value of the “ECU Address” setpoint is 128 (0x80), which is the preferred starting address for self-configurable ECUs as set by the SAE in J1939 tables B3 and B7. The Axiomatic EA supports the selection of any address between 0 and 253. ***It is user’s responsibility to select an address that complies with the standard.*** The user must also be aware that since the unit is arbitrary address capable, if another ECU with a higher priority NAME contends for the selected address, the 2BIN-4OUT-DR I/O will continue select the next highest address until it finds one that it can claim. See J1939/81 for more details about address claiming.

#### Software Identifier

PGN 65242		Software Identification	- SOFT
Transmission Repetition Rate:		On request	
Data Length:		Variable	
Extended Data Page:		0	
Data Page:		0	
PDU Format:		254	
PDU Specific:		218 PGN Supporting Information:	
Default Priority:		6	
Parameter Group Number:		65242 (0xFEDA)	
Start Position	Length	Parameter Name	SPN
1	1 Byte	Number of software identification fields	965
2-n	Variable	Software identification(s), Delimiter (ASCII “**”)	234

Byte 1 is set to 5, and the identification fields are as follows.

<b>(Part Number)*(Version)*(Date)*(Owner)*(Description)</b>
---

The Axiomatic EA shows all this information in “General ECU Information”, as shown below.

*Note: The information provided in the Software ID is available for any J1939 service tool which supports the PGN -SOFT.*

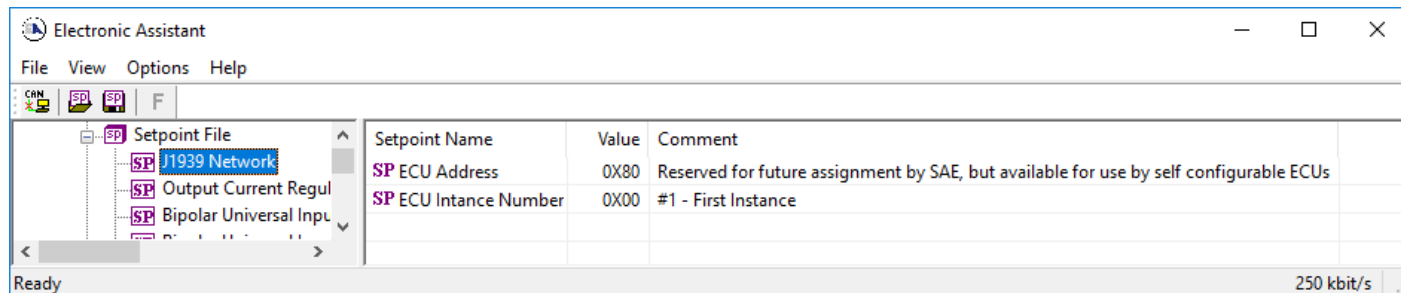
#### **4. ECU SETPOINTS ACCESSED WITH THE AXIOMATIC ELECTRONIC ASSISTANT**

---

This section describes in detail each setpoint, and their default and ranges. Default values presented in tables are values used when setpoint in question is active. Many of the setpoints are dependent on other setpoints and they may not be active by default. Associated Figures show screen capture of initial operation, however some of the setpoints are not in default condition as they are set differently to activate more setpoints for the image. The setpoints are divided into setpoint groups as they are shown in the Axiomatic EA. For more information on how each setpoint is used by 2BIN-4OUT-DR, refer to the relevant section in this user manual.

## 4.1. J1939 Network Parameters

“ECU Instance Number” and “ECU Address” setpoints and their effect are defined in Section 3.2.



**Figure 7 – Screen Capture of J1939 Setpoints**

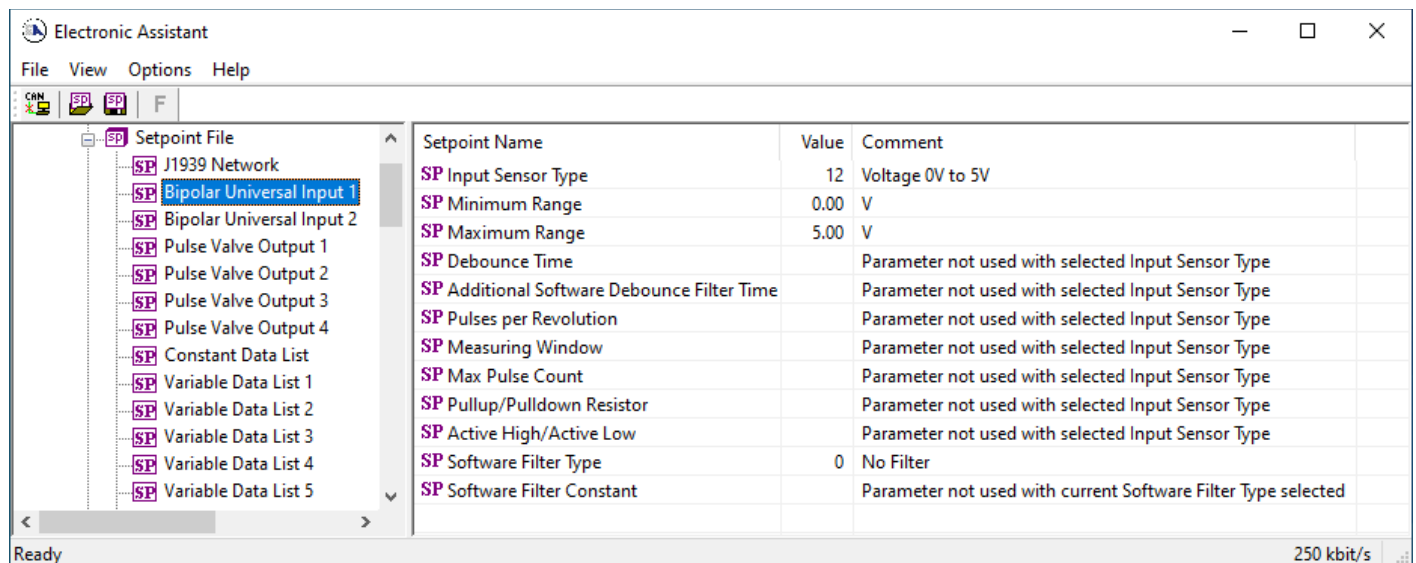
Name	Range	Default	Notes
ECU Address	0x80	0-253	Preferred address for a self-configurable ECU
ECU Instance	0-7	0x00	Per J1939-81

**Table 25 – J1939 Network Setpoints**

If non-default values for the “ECU Instance Number” or “ECU Address” are used, they will be mirrored during a setpoint file flashing, and will only take effect once the entire file has been downloaded to the unit. After the setpoint flashing is complete, the unit will claim the new address and/or re-claim the address with the new NAME. If these setpoints are changing, it is recommended to close and re-open the CAN connection on the Axiomatic EA after the file is loaded, such that only the new NAME and address appear in the J1939 CAN Network ECU list.

## 4.2. Bipolar Universal Input Setpoints

The Universal Inputs are defined in Section 1.1. The setpoint group includes diagnostic related setpoints, which are presented in Section 1.3 in detail.



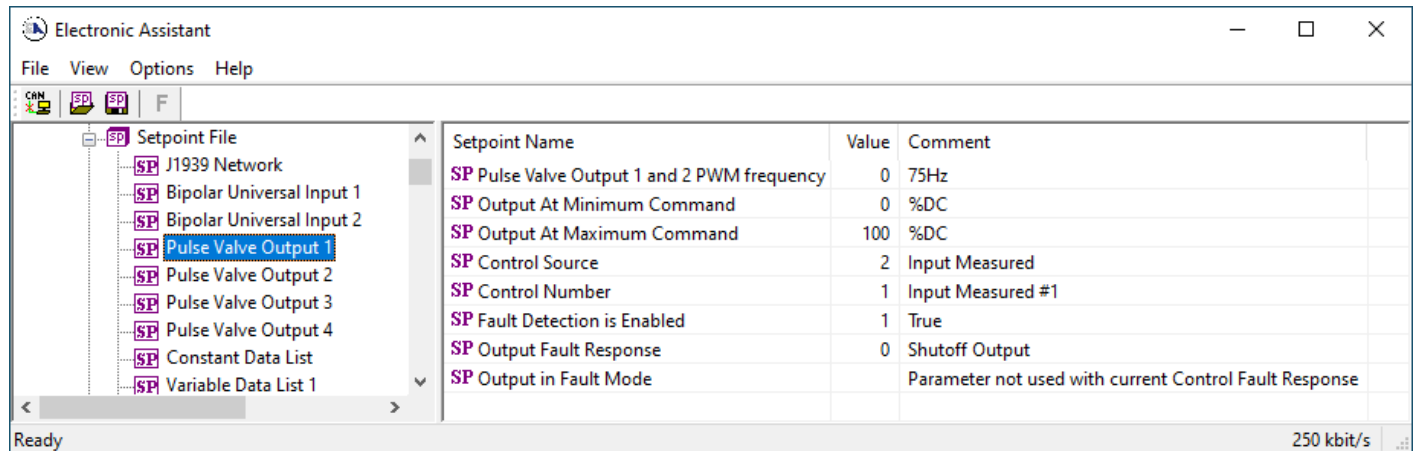
**Figure 8 – Screen Capture of Universal Input Setpoints**

Name	Range	Default	Notes
Input Sensor Type	Drop List	VOLTAGE_0_TO_5V	See Table 1
Minimum Range	From Minimum Error to Maximum Range	Depends on Input Sensor Type	
Maximum Range	From Minimum Range to Maximum Error	Depends on Input Sensor Type	
Debounce Time	Drop List	None	See Table 3
Additional Software Debounce Filter Time	Drop List	0ms	See Table 2
Pulses per Revolution	Drop List	FALSE	See Section 1.1
Measuring Window	1..65535	1000 Pulse(s)	
Maximum Pulse Count	1..65535	10 Pulse(s)	
Pullup/Pulldown Resistor	Drop List	10kΩ Pulldown	See Table 4
Active High/Active Low	Drop List	Active High	See Table 5
Software Filter Type	Drop List	No Filtering	See Table 7
Software Filter Constant	1..1000	1	

**Table 26 – Universal Input Setpoints**

### 4.3. Pulse Valve Output Setpoints

The Pulse Valve Output Function Block is defined in Section 1.3. Please refer there for detailed information about how these setpoints are used. Outputs are disabled by default. To enable an output “**Control Source**” must be chosen.



**Figure 9 – Screen Capture of Pulse Valve Output Setpoints**

Name	Range	Default	Notes
Output Frequency	Drop List	75Hz (33Hz for AX022460-03)	See Table 8
Output At Minimum Command	0 to 100	0	
Output At Maximum Command	0 to 100	100	
Control Source	Drop List	Control not used	See Table 23
Control Number	Depends on control source	1	See Table 23
Fault Detection is Enabled	Drop List	True	
Output Fault Response	Drop List	Shutoff Output	See Table 9
Output in Fault Mode	0 to 100	100	

**Table 27 – Pulse Valve Output Setpoints**

#### 4.4. Constant Data List Setpoints

The Constant Data List Function Block is provided to allow the user to select values as desired for various logic block functions.

The first two constants are fixed values of 0 (False) and 1 (True) for use in binary logic. The remaining 13 constants are fully user programmable to any value between +/- 1 000 000. The default values (shown in Figure 10) are arbitrary and should be configured by the user as appropriate for their application.

Setpoint Name	Value	Comment
SP Constant FALSE (fixed)	False	(Read Only)
SP Constant TRUE (fixed)	True	(Read Only)
SP Constant Value 3	10.0000000	
SP Constant Value 4	20.0000000	
SP Constant Value 5	30.0000000	
SP Constant Value 6	40.0000000	
SP Constant Value 7	50.0000000	
SP Constant Value 8	60.0000000	
SP Constant Value 9	70.0000000	
SP Constant Value 10	80.0000000	
SP Constant Value 11	90.0000000	
SP Constant Value 12	100.0000000	
SP Constant Value 13	25.0000000	
SP Constant Value 14	75.0000000	
SP Constant Value 15	1.0000000	

Figure 10 – Screen Capture of Constant Data List Setpoints

#### 4.5. Variable Data List Setpoints

The Variable Data List Function Block is provided to allow the user to select values as desired for various logic block functions and defining rule for updating this data at run time. This functionality is explained in more detail in section 1.5.

Setpoint Name	Value	Comment
SP Variable Value 1	0.0	
SP Variable Value #1 Data Source	0	Control Not Used
SP Variable Value #1 Data Number	1	Control Not Used #1
SP Variable Value #1 Update Trigger Source	0	Control Not Used
SP Variable Value #1 Update Trigger Number	1	Control Not Used #1
SP Variable Value #1 Update Trigger Threshold Source	0	Control Not Used
SP Variable Value #1 Update Trigger Threshold Number	1	Control Not Used #1
SP Variable Value #1 Update Function	0	=, True when InA Equals InB



**Figure 11 – Screen Capture of Variable Data List Setpoints**

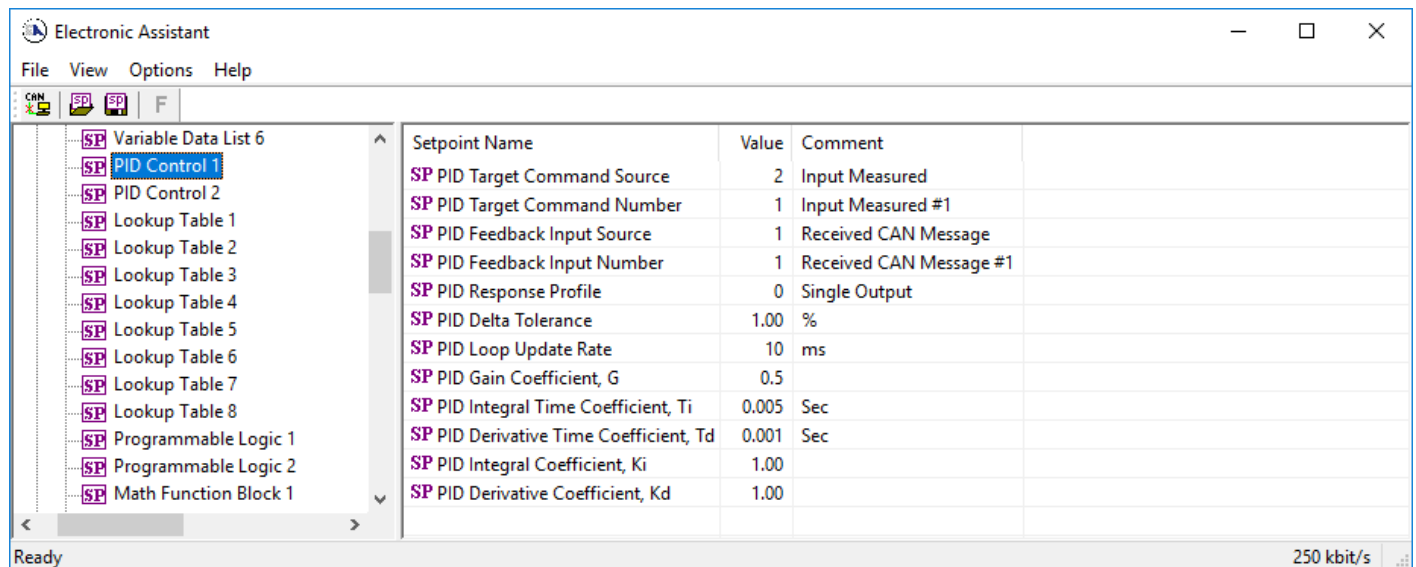
Name	Range	Default	Notes
Variable Value		0	
Variable Value Data Source	Drop List	Control Not Used	See Table 23
Variable Value Data Number	Depends on control source	1	See Table 23
Variable Value Update Trigger Source	Drop List	Control Not Used	See Table 23
Variable Value Update Trigger Number	Depends on control source	1	See Table 23
Variable Value Update Trigger Threshold Source	Drop List	Control Not Used	See Table 23
Variable Value Update Trigger Threshold Number	Depends on control source	1	See Table 23
Variable Value Update Function	0...17	0	See Table 18

**Table 28 – Variable Data Setpoints**

#### 4.6. PID Control Setpoints

The PID Control Function Block is defined in Section 1.6. Please refer there for detailed information about how all these setpoints are used.

Command Source is set to ‘Control Not Used’ by default. To enable a PID Control, select appropriate “PID Target Command Source” and “PID Feedback Input Source”.



**Figure 12 - Screen Capture of PID Control Setpoints**

Name	Range	Default	Notes
PID Target Command Source	Drop List	Control Not Used	See Table 23
PID Target Command Number	Depends on control source	1	See Table 23
PID Feedback Input Source	Drop List	Control Not Used	See Table 23

PID Feedback Input Number	Depends on control source	1	See Table 23
PID Response Profile	Drop List	Single Output	See Table 13
PID Delta Tolerance	0 to 100	1.00 %	%
PID Loop Update Rate	1 to 60 000 ms	10ms	1 ms resolution
PID Gain Coefficient, G	0.1 to 10	0.5	See Equation 4
PID Integral Time Coefficient, Ti	0.001 to 10 Sec	0.005 Sec	0.001 Sec (1ms) resolution
PID Derivative Time Coefficient, Td	0.001 to 10 Sec	0.001 Sec	0.001 Sec (1ms) resolution
PID Integral Coefficient, Ki	0 to 10	1.00	0 disables integral, PD ctrl
PID Derivative Coefficient, Kd	0 to 10	1.00	0 disables derivative, PI ctrl

**Table 29 – Programmable Logic Setpoints**

## 4.7. Lookup Table Setpoints

The Lookup Table Function Block is defined in Section 1.7 Please refer there for detailed information about how all these setpoints are used. “**X-Axis Source**” is set to ‘*Control Not Used*’ by default. To enable a Lookup Table select appropriate “**X-Axis Source**”.

The screenshot shows the 'Electronic Assistant' software interface. On the left, a tree view lists various function blocks, with 'Lookup Table' selected. The main window displays a table of setpoints for the selected block.

Setpoint Name	Value	Comment
SP X-Axis Source	2	Input Measured
SP X-Axis Number	1	Input Measured #1
SP X-Axis Type	0	Data Response
SP Disable limit (X Value)		Parameter not used with current Control Source selected
SP Enable limit (X Value)		Parameter not used with current Control Source selected
SP Output value when disabled		Parameter not used with current Control Source selected
SP Table Auto-Cycle		Parameter not used with selected X-Axis Type
SP Point 1 - Response	1	Ramp To
SP Point 2 - Response	1	Ramp To
SP Point 3 - Response	1	Ramp To
SP Point 4 - Response	1	Ramp To
SP Point 5 - Response	1	Ramp To
SP Point 6 - Response	1	Ramp To
SP Point 7 - Response	1	Ramp To
SP Point 8 - Response	1	Ramp To
SP Point 9 - Response	1	Ramp To
SP Point 10 - Response	1	Ramp To
SP Point 0 - X Value	0.000	
SP Point 1 - X Value	0.500	
SP Point 2 - X Value	1.000	
SP Point 3 - X Value	1.500	
SP Point 4 - X Value	2.000	
SP Point 5 - X Value	2.500	
SP Point 6 - X Value	3.000	
SP Point 7 - X Value	3.500	
SP Point 8 - X Value	4.000	
SP Point 9 - X Value	4.500	
SP Point 10 - X Value	5.000	
SP Point 0 - Y Value	0.000	
SP Point 1 - Y Value	10.000	
SP Point 2 - Y Value	20.000	
SP Point 3 - Y Value	30.000	
SP Point 4 - Y Value	40.000	
SP Point 5 - Y Value	50.000	
SP Point 6 - Y Value	60.000	
SP Point 7 - Y Value	70.000	
SP Point 8 - Y Value	80.000	
SP Point 9 - Y Value	90.000	
SP Point 10 - Y Value	100.000	

Figure 13 – Screen Capture of Lookup table Setpoints

Name	Range	Default	Notes
X-Axis Source	Drop List	Control Not Used	See Table 23
X-Axis Number	Depends on control source	1	See Table 23
X-Axis Type	Drop List	Data Response	See Table 14
Disable limit (X Value)	From X-Axis source minimum to X-Axis source maximum	X-Axis source maximum 5.000	See Section 1.7
Enable limit (X Value)	From X-Axis source minimum to X-Axis source maximum	2.500	See Section 1.7
Output value when disabled	-10 <sup>6</sup> to 10 <sup>6</sup>	0.000	See Section 1.7
Table Auto-Cycle	Drop List	0	
Point 1 - Response	Drop List	Ramp To	See Table 15
Point 2 - Response	Drop List	Ramp To	See Table 15
Point 3 - Response	Drop List	Ramp To	See Table 15
Point 4 - Response	Drop List	Ramp To	See Table 15
Point 5 - Response	Drop List	Ramp To	See Table 15
Point 6 - Response	Drop List	Ramp To	See Table 15
Point 7 - Response	Drop List	Ramp To	See Table 15
Point 8 - Response	Drop List	Ramp To	See Table 15
Point 9 - Response	Drop List	Ramp To	See Table 15
Point 10 - Response	Drop List	Ramp To	See Table 15
Point 0 - X Value	From X-Axis source minimum to Point 1 - X Value	X-Axis source minimum 0.000	See Section 1.7
Point 1 - X Value	From Point 0 - X Value to Point 2 - X Value	0.500	See Section 1.7
Point 2 - X Value	From Point 1 - X Value to Point 3 - X Value	1.000	See Section 1.7
Point 3 - X Value	From Point 2 - X Value to Point 4 - X Value	1.500	See Section 1.7
Point 4 - X Value	From Point 3 - X Value to Point 5 - X Value source	2.000	See Section 1.7
Point 5 - X Value	From Point 4 - X Value to Point 6 - X Value	2.500	See Section 1.7
Point 6 - X Value	From Point 5 - X Value to Point 7 - X Value	3.000	See Section 1.7
Point 7 - X Value	From Point 6 - X Value to Point 8 - X Value	3.500	See Section 1.7
Point 8 - X Value	From Point 7 - X Value to Point 9 - X Value	4.000	See Section 1.7
Point 9 - X Value	From Point 8 - X Value to Point 10 - X Value	4.500	See Section 1.7
Point 10 - X Value	From Point 9 - X Value to X-Axis source maximum	X-Axis source maximum 5.000	See Section 1.7
Point 0 - Y Value	-10 <sup>6</sup> to 10 <sup>6</sup>	0.000	
Point 1 - Y Value	-10 <sup>6</sup> to 10 <sup>6</sup>	10.000	
Point 2 - Y Value	-10 <sup>6</sup> to 10 <sup>6</sup>	20.000	
Point 3 - Y Value	-10 <sup>6</sup> to 10 <sup>6</sup>	30.000	
Point 4 - Y Value	-10 <sup>6</sup> to 10 <sup>6</sup>	40.000	
Point 5 - Y Value	-10 <sup>6</sup> to 10 <sup>6</sup>	50.000	
Point 6 - Y Value	-10 <sup>6</sup> to 10 <sup>6</sup>	60.000	
Point 7 - Y Value	-10 <sup>6</sup> to 10 <sup>6</sup>	70.000	
Point 8 - Y Value	-10 <sup>6</sup> to 10 <sup>6</sup>	80.000	
Point 9 - Y Value	-10 <sup>6</sup> to 10 <sup>6</sup>	90.000	
Point 10 - Value	-10 <sup>6</sup> to 10 <sup>6</sup>	100.000	

**Table 30 – Lookup Table Setpoints**

#### 4.8. Programmable Logic Setpoints

The Programmable Logic function block is defined in Section 1.8. Please refer there for detailed information about how all these setpoints are used. “**Programmable Logic Enabled**” is ‘*False*’ by default. To enable Logic set “**Programmable Logic Enabled**” to ‘*True*’ and select appropriate “**Argument Source**”.

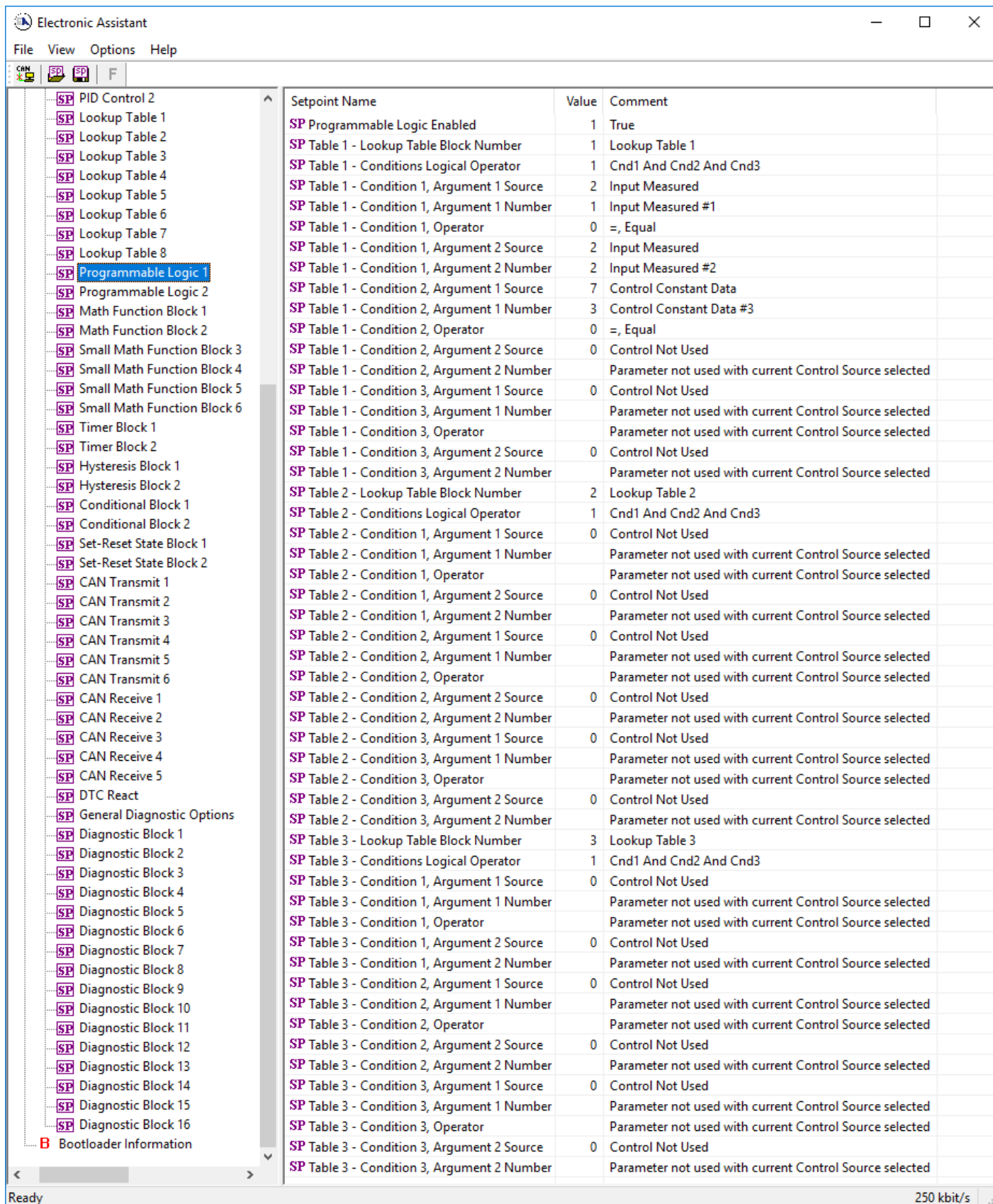


Figure 14 – Screen Capture of Programmable Logic Setpoints

Setpoint ranges and default values for Programmable Logic Blocs are listed in Table 31. Only “**Table1**” setpoint are listed, because other “**TableX**” setpoints are similar, except for the default value of the “**Lookup Table Block Number**” setpoint, which is X for “**TableX**”.

<b>Name</b>	<b>Range</b>	<b>Default</b>	<b>Notes</b>
Programmable Logic Enabled	Drop List	False	
Table1 - Lookup Table Block Number	1 to 8	Look up Table 1	
Table1 - Conditions Logical Operation	Drop List	Default Table	See Table 17
Table1 - Condition1, Argument 1 Source	Drop List	Control Not Used	See Table 23
Table1 - Condition1, Argument 1 Number	Depends on control source	1	See Table 23
Table1 - Condition1, Operator	Drop List	=, Equal	See Table 16
Table1 - Condition1, Argument 2 Source	Drop List	Control Not Used	See Table 23
Table1 - Condition1, Argument 2 Number	Depends on control source	1	See Table 23
Table1 - Condition2, Argument 1 Source	Drop List	Control Not Used	See Table 23
Table1 - Condition2, Argument 1 Number	Depends on control source	1	See Table 23
Table1 - Condition2, Operator	Drop List	=, Equal	See Table 16
Table1 - Condition2, Argument 2 Source	Drop List	Control Not Used	See Table 23
Table1 - Condition2, Argument 2 Number	Depends on control source	1	See Table 23
Table1 - Condition3, Argument 1 Source	Drop List	Control Not Used	See Table 23
Table1 - Condition3, Argument 1 Number	Depends on control source	1	See Table 23
Table1 - Condition3, Operator	Drop List	=, Equal	See Table 16
Table1 - Condition3, Argument 2 Source	Drop List	Control Not Used	See Table 23
Table1 - Condition3, Argument 2 Number	Depends on control source	1	See Table 23

**Table 31 – Programmable Logic Setpoints**

## 4.9. Math Function Block Setpoints

The Math Function Block is defined in Section 1.9. Please refer there for detailed information about how all these setpoints are used. **“Math Function Enabled”** is ‘False’ by default. To enable a Math Function Block, set **“Math Function Enabled”** to ‘True’ and select appropriate **“Input Source”**.

Setpoint Name	Value	Comment
SP Math Function Enabled	1	True
SP Function 1 Input A Source	2	Input Measured
SP Function 1 Input A Number	1	Input Measured #1
SP Function 1 Input A Minimum	0.00	
SP Function 1 Input A Maximum	100.00	
SP Function 1 Input A Scaler	1.00	
SP Function 1 Input B Source	2	Input Measured
SP Function 1 Input B Number	2	Input Measured #2
SP Function 1 Input B Minimum	0.00	
SP Function 1 Input B Maximum	100.00	
SP Function 1 Input B Scaler	1.00	
SP Math Function 1 Operation	9	+, Result = InA plus InB
SP Function 2 Input B Source	0	Control Not Used
SP Function 2 Input B Number		Parameter not used with current Control Source sele
SP Function 2 Input B Minimum		Parameter not used with current Control Source sele
SP Function 2 Input B Maximum		Parameter not used with current Control Source sele
SP Function 2 Input B Scaler		Parameter not used with current Control Source sele
SP Math Function 2 Operation (Input A = Result of Function 1)		Parameter not used with current Control Source sele
SP Function 3 Input B Source	0	Control Not Used
SP Function 3 Input B Number		Parameter not used with current Control Source sele
SP Function 3 Input B Minimum		Parameter not used with current Control Source sele
SP Function 3 Input B Maximum		Parameter not used with current Control Source sele
SP Function 3 Input B Scaler		Parameter not used with current Control Source sele
SP Math Function 3 Operation (Input A = Result of Function 2)		Parameter not used with current Control Source sele
SP Function 4 Input B Source	0	Control Not Used
SP Function 4 Input B Number		Parameter not used with current Control Source sele
SP Function 4 Input B Minimum		Parameter not used with current Control Source sele
SP Function 4 Input B Maximum		Parameter not used with current Control Source sele
SP Function 4 Input B Scaler		Parameter not used with current Control Source sele
SP Math Function 4 Operation (Input A = Result of Function 3)		Parameter not used with current Control Source sele
SP Math Output Minimum Range	0.00	
SP Math Output Maximum Range	100.00	
SP Math Output Initial Value	0.00	

Figure 15 – Screen Capture of Math Function Block Setpoints



Name	Range	Default	Notes
Math Function Enabled	Drop List	False	
Function 1 Input A Source	Drop List	Control not used	See Table 23
Function 1 Input A Number	Depends on control source	1	See Table 23
Function 1 Input A Minimum	$-10^6$ to $10^6$	0.0	
Function 1 Input A Maximum	$-10^6$ to $10^6$	100.0	
Function 1 Input A Scaler	-1.00 to 1.00	1.00	
Function 1 Input B Source	Drop List	Control not used	See Table 23
Function 1 Input B Number	Depends on control source	1	See Table 23
Function 1 Input B Minimum	$-10^6$ to $10^6$	0.0	
Function 1 Input B Maximum	$-10^6$ to $10^6$	100.0	
Function 1 Input B Scaler	-1.00 to 1.00	1.00	
Math Function 1 Operation	Drop List	=, True when InA Equals InB	See Table 18
Function 2 Input B Source	Drop List	Control not used	See Table 23
Function 2 Input B Number	Depends on control source	1	See Table 23
Function 2 Input B Minimum	$-10^6$ to $10^6$	0.0	
Function 2 Input B Maximum	$-10^6$ to $10^6$	100.0	
Function 2 Input B Scaler	-1.00 to 1.00	1.00	
Math Function 3 Operation	Drop List	=, True when InA Equals InB	See Table 18
Function 3 Input B Source	Drop List	Control not used	See Table 23
Function 3 Input B Number	Depends on control source	1	See Table 23
Function 3 Input B Minimum	$-10^6$ to $10^6$	0.0	
Function 3 Input B Maximum	$-10^6$ to $10^6$	100.0	
Function 3 Input B Scaler	-1.00 to 1.00	1.00	
Math Function 3 Operation	Drop List	=, True when InA Equals InB	See Table 18
Function 4 Input B Source	Drop List	Control not used	See Table 23
Function 4 Input B Number	Depends on control source	1	See Table 23
Function 4 Input B Minimum	$-10^6$ to $10^6$	0.0	
Function 4 Input B Maximum	$-10^6$ to $10^6$	100.0	
Function 4 Input B Scaler	-1.00 to 1.00	1.00	
Math Function 4 Operation	Drop List	=, True when InA Equals InB	See Table 18
Math Output Minimum Range	$-10^6$ to $10^6$	0.0	
Math Output Maximum Range	$-10^6$ to $10^6$	100.0	
Math Output Initial Value	$-10^6$ to $10^6$	0.0	

**Table 32 – Math Function Setpoints**

## 4.10. Delay Timer Block Setpoints

The Delay Timer Block is defined in Section 1.10. Please refer there for detailed information about how all these setpoints are used. To enable a Delay Timer Block, select appropriate “**Timer Data 1 Source**”, “**Timer Data 2 Source**” and trigger configuration.

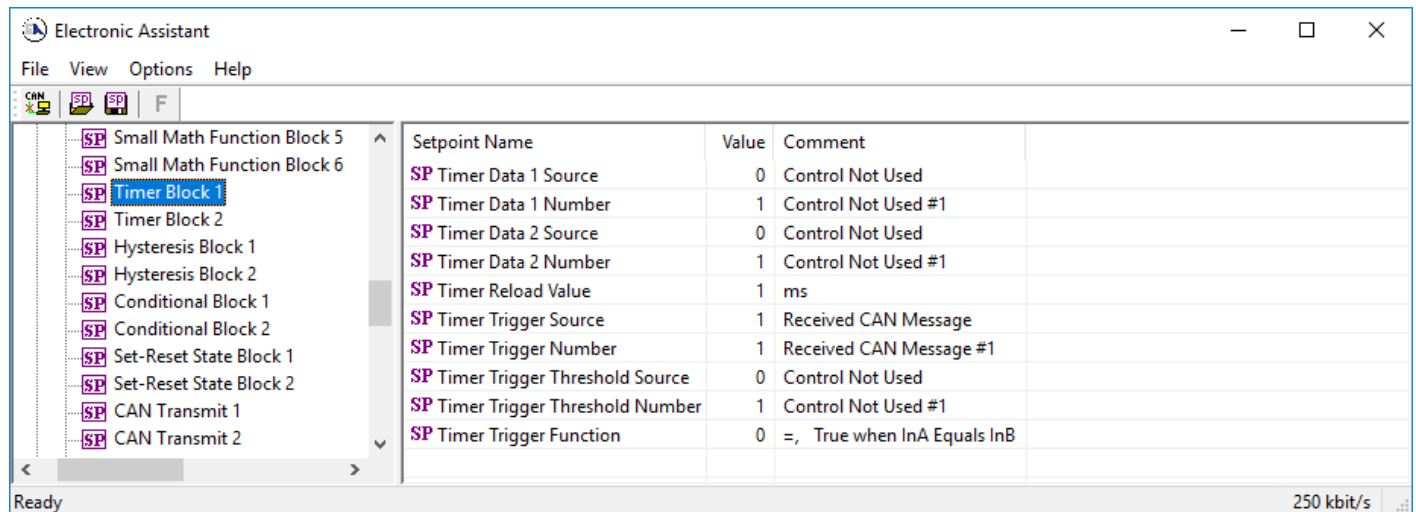


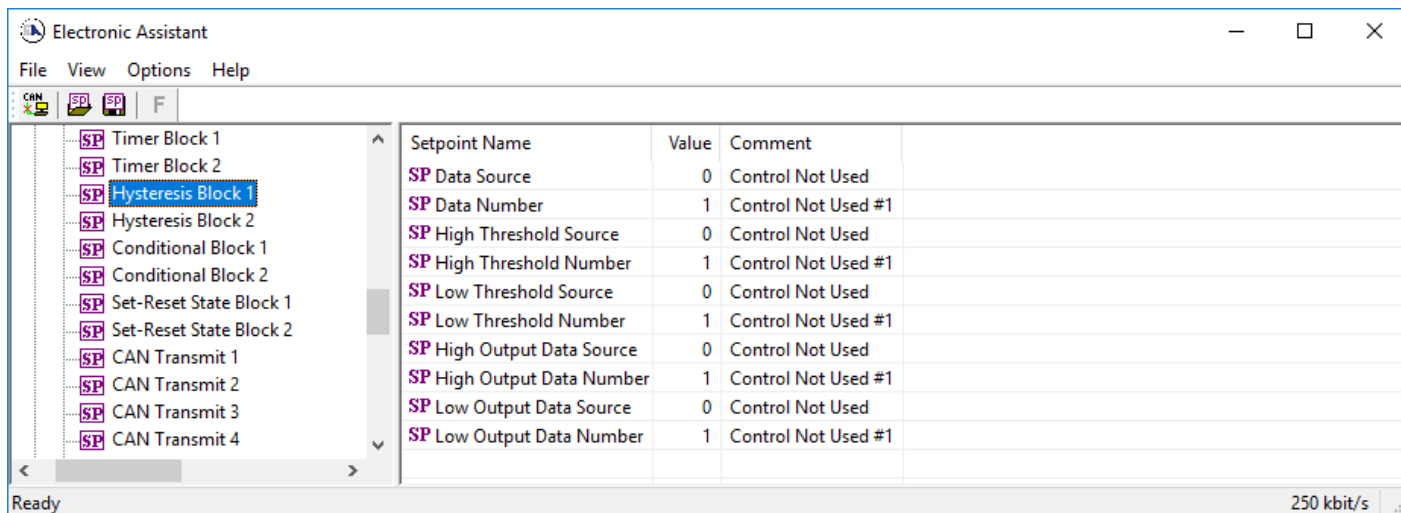
Figure 16 – Screen Capture of Timer Block Setpoints

Name	Range	Default	Notes
Timer Data 1 Source	Drop List	Control not used	
Timer Data 1 Number	Drop List	Control not used #1	See Table 23
Timer Data 2 Source	Drop List	Control not used	
Timer Data 2 Number	Drop List	Control not used #1	See Table 23
Timer Reload Value	0..65535	1	milliseconds
Timer Trigger Source	Drop List	Control not used	
Timer Trigger Number	Drop List	Control not used #1	See Table 23
Timer Trigger Threshold Source	Drop List	Control not used	
Timer Trigger Threshold Number	Drop List	Control not used #1	See Table 23
Timer Trigger Function	Drop List	=, True when InA Equals InB	See Table 18

Table 33 – Timer Block Setpoints

## 4.11. Hysteresis Block Setpoints

The Hysteresis Block is defined in Section 1.11. Please refer that section for detailed information about how all these setpoints are used. To enable a Hysteresis Block, select appropriate “**Data Source**” and hysteresis thresholds.



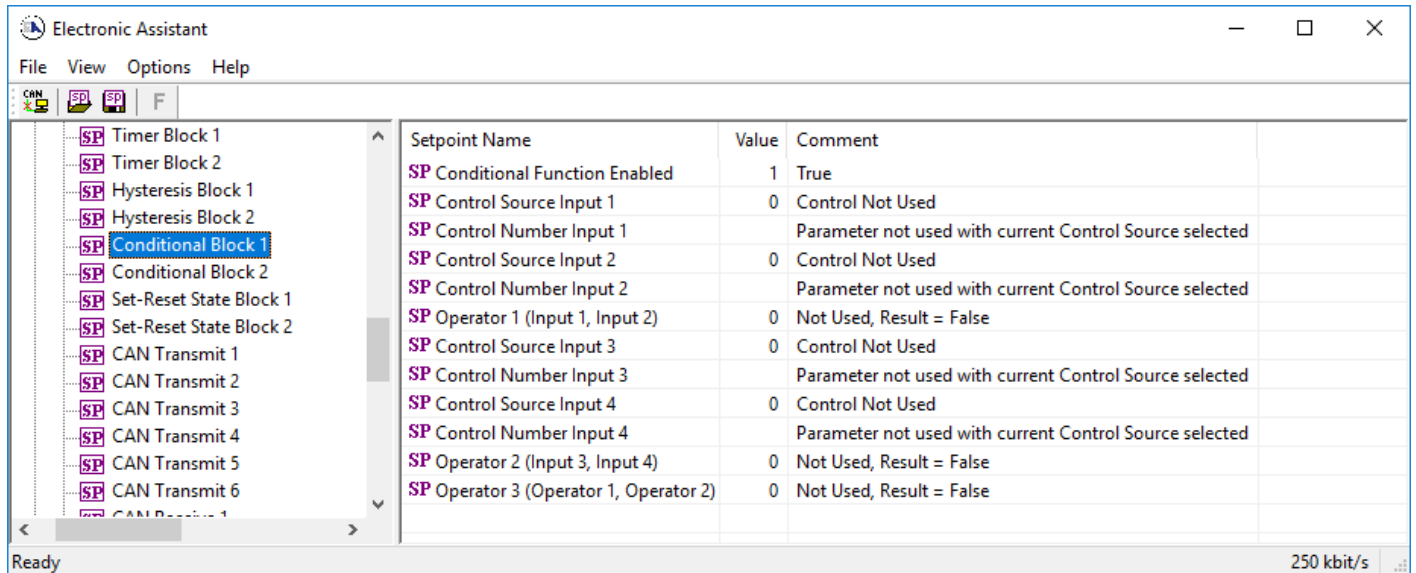
**Figure 17 – Screen Capture of Hysteresis Block Setpoints**

Name	Range	Default	Notes
Data Source	Drop List	Control not used	
Data Number	Drop List	Control not used #1	See Table 23
High Threshold Source	Drop List	Control not used	
High Threshold Number	Drop List	Control not used #1	See Table 23
Low Threshold Source	Drop List	Control not used	
Low Threshold Number	Drop List	Control not used #1	See Table 23
High Output Data Source	Drop List	Control not used	
High Output Data Number	Drop List	Control not used #1	See Table 23
Low Output Data Source	Drop List	Control not used	
Low Output Data Number	Drop List	Control not used #1	See Table 23

**Table 34 – Hysteresis Block Setpoints**

#### 4.12. Conditional Block Setpoints

The Conditional Block is defined in Section 1.12. Please refer there for detailed information about how all these setpoints are used. “**Conditional Function Enabled**” is ‘False’ by default. To enable a Conditional Function Block, set “**Conditional Function Enabled**” to ‘True’ and select appropriate “**Control Input Source 1**” and “**Control Input Source 2**”.



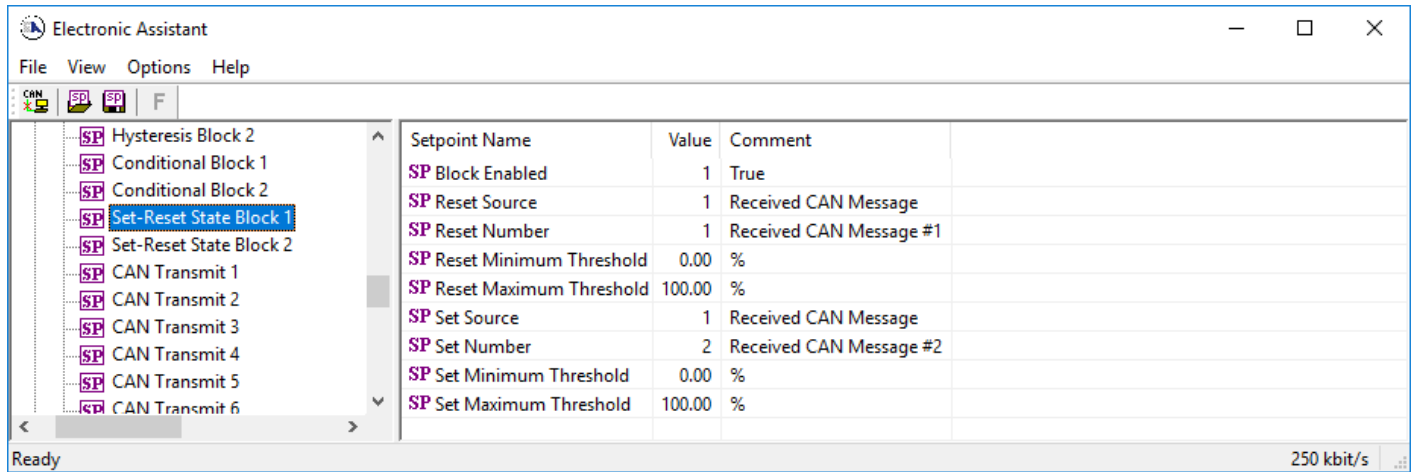
**Figure 18 – Screen Capture of Conditional Block Setpoints**

Name	Range	Default	Notes
Conditional Function Enabled	Drop List	False	
Control Source Input 1	Drop List	Control not used	
Control Number Input 1	Drop List	Control not used #1	See Table 23
Control Source Input 2	Drop List	Control not used	
Control Number Input 2	Drop List	Control not used #1	See Table 23
Operator 1 (Input 1, Input 2)	Drop List	=, True when InA Equals InB	See Table 18
Control Source Input 3	Drop List	Control not used	
Control Number Input 3	Drop List	Control not used #1	See Table 23
Control Source Input 4	Drop List	Control not used	
Control Number Input 5	Drop List	Control not used #1	See Table 23
Operator 2 (Input 3, Input 4)	Drop List	=, True when InA Equals InB	See Table 18
Operator 3 (Operator 1, Operator 2)	Drop List	=, True when InA Equals InB	See Table 18

**Table 35 – Conditional Block Setpoints**

#### 4.13. Set-Reset state Setpoints

The Set-Reset State Block is defined in Section 1.13. Please refer there for detailed information about how all these setpoints are used. **“Block Enabled”** is ‘False’ by default. To enable a Set-Reset State Block, set **“Block Enabled”** to ‘True’ and select appropriate **“Reset Source”** and **“Set Source”**.



**Figure 19 – Screen Capture of Set-Reset State Block Setpoints**

Name	Range	Default	Notes
Block Enabled	Drop List	False	
Reset Source	Drop List	Control not used	
Reset Number	Drop List	Control not used #1	See Table 23
Reset Minimum Threshold	0..100	0%	
Reset Maximum Threshold	0..100	100%	
Set Source	Drop List	Control not used	
Set Number	Drop List	Control not used #1	See Table 23
Set Minimum Threshold	0..100	0%	
Set Maximum Threshold	0..100	100%	

**Table 36 – Set-Reset State Block Setpoints**

#### 4.14. CAN Transmit Setpoints

CAN Transmit Message Function Block is presented in Section 1.14. Please refer there for detailed information how these setpoints are used. **“Transmit Repetition Rate”** is 0ms by default, thus no message will be sent.

Electronic Assistant

File View Options Help

CAN SP SP F

Setpoint Name	Value	Comment
SP Transmit PGN	0xFF00	Transmit PGN: 65280
SP Transmit Repetition Rate	0	ms
SP Transmit Message Priority	6	
SP Destination Address (PDU1)	0	Destination ECU Address: 0x0
SP Signal 1 Data Source	2	Input Measured
SP Signal 1 Data Number	1	Input Measured #1
SP Signal 1 Transmit Data Type	2	CAN signal continuous
SP Signal 1 Transmit Data Width	8	
SP Signal 1 Transmit Data Index in Array (LSB)	0	1st Byte Position
SP Signal 1 Transmit Bit Index in Byte (LSB)	0	1st Bit Position
SP Signal 1 Transmit Data Resolution	1.0000000	
SP Signal 1 Transmit Data Offset	0.0000000	
SP Signal 1 Transmit Data Minimum	0.0000000	
SP Signal 1 Transmit Data Maximum	255.0000000	
SP Signal 2 Data Source	0	Control Not Used
SP Signal 2 Data Number		Parameter not used with current Data Source
SP Signal 2 Transmit Data Type		Parameter not used with current Data Source
SP Signal 2 Transmit Data Width		Parameter not used with current Data Source
SP Signal 2 Transmit Data Index in Array (LSB)		Parameter not used with current Data Source
SP Signal 2 Transmit Bit Index in Byte (LSB)		Parameter not used with current Data Source
SP Signal 2 Transmit Data Resolution		Parameter not used with current Data Source
SP Signal 2 Transmit Data Offset		Parameter not used with current Data Source
SP Signal 2 Transmit Data Minimum		Parameter not used with current Data Source
SP Signal 2 Transmit Data Maximum		Parameter not used with current Data Source
SP Signal 3 Data Source	0	Control Not Used
SP Signal 3 Data Number		Parameter not used with current Data Source
SP Signal 3 Transmit Data Type		Parameter not used with current Data Source
SP Signal 3 Transmit Data Width		Parameter not used with current Data Source
SP Signal 3 Transmit Data Index in Array (LSB)		Parameter not used with current Data Source
SP Signal 3 Transmit Bit Index in Byte (LSB)		Parameter not used with current Data Source
SP Signal 3 Transmit Data Resolution		Parameter not used with current Data Source
SP Signal 3 Transmit Data Offset		Parameter not used with current Data Source
SP Signal 3 Transmit Data Minimum		Parameter not used with current Data Source
SP Signal 3 Transmit Data Maximum		Parameter not used with current Data Source
SP Signal 4 Data Source	0	Control Not Used
SP Signal 4 Data Number		Parameter not used with current Data Source
SP Signal 4 Transmit Data Type		Parameter not used with current Data Source
SP Signal 4 Transmit Data Width		Parameter not used with current Data Source
SP Signal 4 Transmit Data Index in Array (LSB)		Parameter not used with current Data Source
SP Signal 4 Transmit Bit Index in Byte (LSB)		Parameter not used with current Data Source
SP Signal 4 Transmit Data Resolution		Parameter not used with current Data Source
SP Signal 4 Transmit Data Offset		Parameter not used with current Data Source
SP Signal 4 Transmit Data Minimum		Parameter not used with current Data Source
SP Signal 4 Transmit Data Maximum		Parameter not used with current Data Source

Ready 250 kbit/s

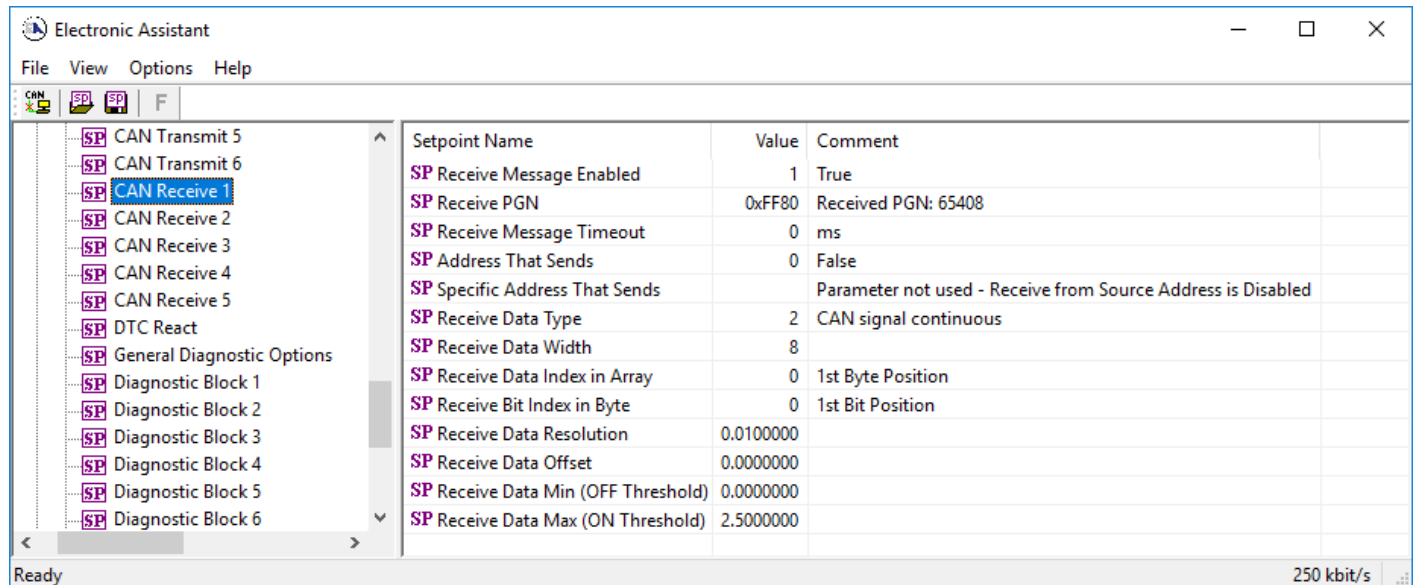
Figure 20 – Screen Capture of CAN Transmit Message Setpoints

Name	Range	Default	Notes
Transmit PGN	0xff00 ... 0xffff	Different for each	See Section 1.14.1
Transmit Repetition Rate	0 ... 65000 ms	0ms	0ms disables transmit
Transmit Message Priority	0...7	6	Proprietary B Priority
Destination Address	0...255	255	Not used by default
Signal 1 Control Source	Drop List	Signal undefined	See Table 23
Signal 1 Control Number	Drop List	Signal undefined	See 1.14.2
Signal 1 Transmit Data Type	Drop List	CAN signal continuous	
Signal 1 Transmit Data Width	1-32	8	
Signal 1 Transmit Data Index in Array	0-7	0	
Signal 1 Transmit Bit Index In Byte	0-7	0	
Signal 1 Transmit Data Resolution	-100000.0 to 100000	0.001	
Signal 1 Transmit Data Offset	-10000 to 10000	0.0	
Signal 1 Transmit Data Minimum	-1000000 to Max	0.0	
Signal 1 Transmit Data Maximum	Min to 100000	2.5	
Signal 2 Control Source	Drop List	Signal undefined	See Table 23
Signal 2 Control Number	Drop List	Signal undefined	See 1.14.2
Signal 2 Transmit Data Type	Drop List	CAN signal continuous	
Signal 2 Transmit Data Width	1-32	8	
Signal 2 Transmit Data Index in Array	0-7	1	
Signal 2 Transmit Bit Index In Byte	0-7	0	
Signal 2 Transmit Data Resolution	-100000.0 to 100000	0.001	
Signal 2 Transmit Data Offset	-10000 to 10000	0.0	
Signal 2 Transmit Data Minimum	-1000000 to Max	0.0	
Signal 2 Transmit Data Maximum	Min to 100000	2.5	
Signal 3 Control Source	Drop List	Signal undefined	See Table 23
Signal 3 Control Number	Drop List	Signal undefined	See 1.14.2
Signal 3 Transmit Data Type	Drop List	CAN signal continuous	
Signal 3 Transmit Data Width	1-32	8	
Signal 3 Transmit Data Index in Array	0-7	2	
Signal 3 Transmit Bit Index In Byte	0-7	0	
Signal 3 Transmit Data Resolution	-100000.0 to 100000	0.001	
Signal 3 Transmit Data Offset	-10000 to 10000	0.0	
Signal 3 Transmit Data Minimum	-1000000 to Max	0.0	
Signal 3 Transmit Data Maximum	Min to 100000	2.5	
Signal 4 Control Source	Drop List	Signal undefined	See Table 23
Signal 4 Control Number	Drop List	Signal undefined	See 1.14.2
Signal 4 Transmit Data Type	Drop List	CAN signal continuous	
Signal 4 Transmit Data Width	1-32	8	
Signal 4 Transmit Data Index in Array	0-7	3	
Signal 4 Transmit Bit Index In Byte	0-7	0	
Signal 4 Transmit Data Resolution	-100000.0 to 100000	0.001	
Signal 4 Transmit Data Offset	-10000 to 10000	0.0	
Signal 4 Transmit Data Minimum	-1000000 to Max	0.0	
Signal 4 Transmit Data Maximum	Min to 100000	2.5	

**Table 37 – CAN Transmit Message Setpoints**

## 4.15. CAN Receive Setpoints

The Math Function Block is defined in Section 1.15. Please refer there for detailed information about how these setpoints are used. **“Receive Message Timeout”** is set to 0ms by default. To enable Receive message set **“Receive Message Timeout”** that differs from zero.



**Figure 21 – Screen Capture of CAN Receive Message Setpoints**

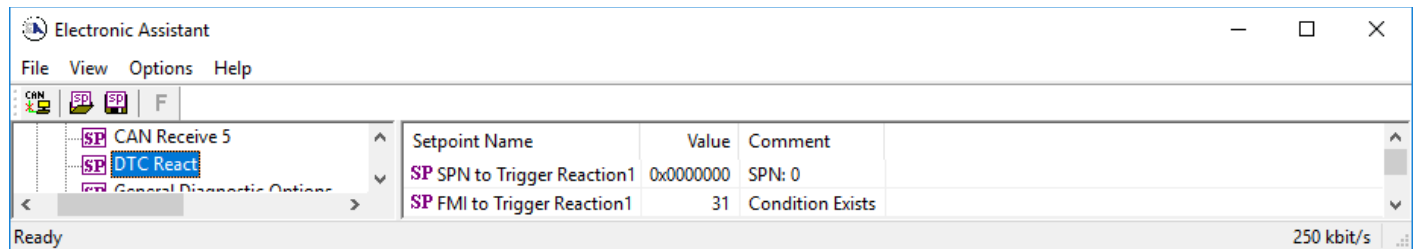
Name	Range	Default	Notes
Received Message Enabled	Drop List	False	
Received PGN	0 to 65536	Different for each	
Received Message Timeout	0 to 60 000 ms	0ms	
Address That Sends	Drop List	False	
Specific Address That Sends	0 to 255	0x00	
Receive Data Type	Drop List	CAN signal continuous	
Receive Data Width	1-32	8	
Receive Data Index in Array	0-7	0	
Receive Bit Index In Byte	0-7	0	
Receive Data Resolution	-100000.0 to 100000	0.01	
Receive Data Offset	-10000 to 10000	0.0	
Receive Data Min (OFF Threshold)	-1000000 to Max	0.0	
Receive Data Max (ON Threshold)	-100000 to 100000	2.5	

**Table 38 – CAN Receive Setpoints**



## 4.16. DTC React Setpoints

The DTC React Function Block is defined in Section 1.16. Please refer there for detailed information about how these setpoints are used.



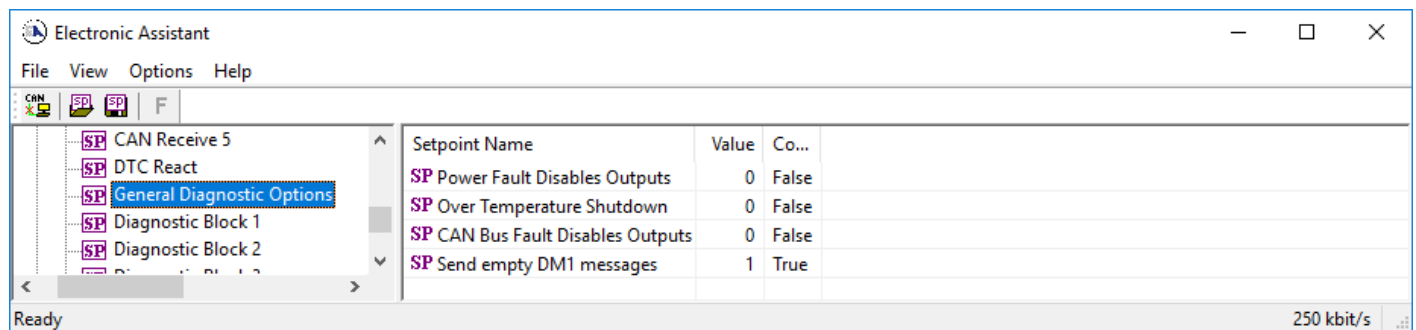
**Figure 22 – Screen Capture of DTC React Setpoints**

Name	Range	Default	Notes
SPN to Trigger Reaction #1	0 to 524287	0	0 is an illegal value, and disables the DTC
FMI to Trigger Reaction #X	Drop List	31, Condition Exists	Supports all FMIs in the J1939 standard

**Table 39 – DTC React Setpoints**

## 4.17. General Diagnostics Options Setpoints

These setpoints control the shutdown of the ECU in case of a power supply or CPU temperature related errors. Refer to section 1.4 for more info.



**Figure 23 – Screen Capture of General Diagnostics Options Setpoints**

<b>Name</b>	<b>Range</b>	<b>Default</b>	<b>Notes</b>
Power Fault Disables Outputs	Drop List	False	
Over Temperature Shutdown	Drop List	False	
CAN Bus Fault Disables Outputs	Drop List	False	
Send empty DM1 messages	Drop List	True	

**Table 40 – General Diagnostics Options Setpoints**

#### **4.18. Diagnostics Blocks Setpoints**

There are 16 Diagnostics blocks that can be configured to monitor various parameters of the Controller. The Diagnostic Function Block is defined in section 1.4. Please refer there for detailed information how these setpoints are used.

Electronic Assistant

File View Options Help

CAN SP SP F

Setpoint Name	Value	Comment
SP Fault Detection is Enabled	1	True
SP Function Type to Monitor	13	Power Supply Measured
SP Function Parameter to Monitor	1	Power Supply Measured
SP Enable Source	0	Control Not Used
SP Enable Number		Parameter not used with current Enable Source selected
SP Enable Response		Parameter not used with current Enable Source selected
SP Fault Detection Type	1	Min and Max Error
SP Maximum Value for Diagnostic Data	45.00	
SP Minimum Value for Diagnostic Data	0.00	
SP Use Hysteresis When Defining Thresholds	1	True
SP Hysteresis	2.00	
SP Event Cleared Only by DM11	0	False
SP Set Limit for MAXIMUM SHUTDOWN	30.00	
SP Clear Limit for MAXIMUM SHUTDOWN		Parameter not used - Hysteresis used when defining thresh
SP Set Limit for MAXIMUM WARNING		Parameter not used with current Fault Detection Type
SP Clear Limit for MAXIMUM WARNING		Parameter not used with current Fault Detection Type
SP Clear Limit for MINIMUM WARNING		Parameter not used with current Fault Detection Type
SP Set Limit for MINIMUM WARNING		Parameter not used with current Fault Detection Type
SP Clear Limit for MINIMUM SHUTDOWN		Parameter not used - Hysteresis used when defining thresh
SP Set Limit for MINIMUM SHUTDOWN	9.00	
SP MAXIMUM SHUTDOWN, Event Generates a DTC in DM1	1	True
SP MAXIMUM SHUTDOWN, Lamp Set by Event	1	Amber,Warning
SP MAXIMUM SHUTDOWN, SPN for Event	0x007F300	SPN: 520960
SP MAXIMUM SHUTDOWN, FMI for Event	3	Voltage Above Normal, Or Shorted To High Source
SP MAXIMUM SHUTDOWN, Delay Before Event is Flagged	1000	ms
SP MAXIMUM WARNING, Event Generates a DTC in DM1		Parameter not used with current Fault Detection Type
SP MAXIMUM WARNING, Lamp Set by Event		Parameter not used with current Fault Detection Type
SP MAXIMUM WARNING, SPN for Event		Parameter not used with current Fault Detection Type
SP MAXIMUM WARNING, FMI for Event		Parameter not used with current Fault Detection Type
SP MAXIMUM WARNING, Delay Before Event is Flagged		Parameter not used with current Fault Detection Type
SP MINIMUM WARNING, Event Generates a DTC in DM1		Parameter not used with current Fault Detection Type
SP MINIMUM WARNING, Lamp Set by Event		Parameter not used with current Fault Detection Type
SP MINIMUM WARNING, SPN for Event		Parameter not used with current Fault Detection Type
SP MINIMUM WARNING, FMI for Event		Parameter not used with current Fault Detection Type
SP MINIMUM WARNING, Delay Before Event is Flagged		Parameter not used with current Fault Detection Type
SP MINIMUM SHUTDOWN, Event Generates a DTC in DM1	1	True
SP MINIMUM SHUTDOWN, Lamp Set by Event	1	Amber,Warning
SP MINIMUM SHUTDOWN, SPN for Event	0x007F300	SPN: 520960
SP MINIMUM SHUTDOWN, FMI for Event	4	Voltage Below Normal, Or Shorted To Low Source
SP MINIMUM SHUTDOWN, Delay Before Event is Flagged	1000	ms

Ready 250 kbit/s

Figure 24 – Screen Capture of Diagnostic Block Setpoints

Name	Range	Default	Notes
Fault Detection is Enabled	Drop List	False	
Function Type to Monitor	Drop List	0 – Control not used	
Function parameter to Monitor	Drop List	0 – No selection	
Fault Detection Type	Drop List	1 – Min and Max Error	See section 1.4
Maximum Value for Diagnostic Data	Minimum Value for Diagnostic Data ... 4.28e <sup>9</sup>	5.0	
Minimum Value for Diagnostic Data	0.0 ... Maximum Value for Diagnostic Data	0.0	
Use Hysteresis When Defining Thresholds	Drop List	False	
Hysteresis	0.0 ... Maximum Value for Diagnostic Data	0.0	
Event Cleared only by DM11	Drop List	False	
Set Limit for MAXIMUM SHUTDOWN	Minimum Value for Diagnostic Data ... Maximum Value for Diagnostics Data	4.8	
Clear Limit for MAXIMUM SHUTDOWN	Minimum Value for Diagnostic Data ... Maximum Value for Diagnostics Data	4.6	
Set Limit for MAXIMUM WARNING	Minimum Value for Diagnostic Data ... Maximum Value for Diagnostics Data	0.0	
Clear Limit for MAXIMUM WARNING	Minimum Value for Diagnostic Data ... Maximum Value for Diagnostics Data	0.0	
Clear Limit for MINIMUM WARNING	Minimum Value for Diagnostic Data ... Maximum Value for Diagnostics Data	0.0	
Set Limit for MINIMUM WARNING	Minimum Value for Diagnostic Data ... Maximum Value for Diagnostics Data	0.0	
Clear Limit for MINIMUM SHUTDOWN	Minimum Value for Diagnostic Data ... Maximum Value for Diagnostics Data	0.4	
Set Limit for MINIMUM SHUTDOWN	Minimum Value for Diagnostic Data ... Maximum Value for Diagnostics Data	0.2	
MAXIMUM SHUTDOWN, Event Generates a DTC in DM1	Drop List	True	
MAXIMUM SHUTDOWN, Lamp Set by Event	Drop List	0 – Protect	See Table 10
MAXIMUM SHUTDOWN, SPN for Event	0...524287	520448 (\$7F100)	It is the user's responsibility to select an SPN that will not violate the J1939 standard.

MAXIMUM SHUTDOWN, FMI for Event	Drop List	3, Voltage Above Normal	See Table 11
MAXIMUM SHUTDOWN, Delay Before Event is Flagged	0...60000 ms	1000	
MAXIMUM WARNING, Event Generates a DTC in DM1	Drop List	True	
MAXIMUM WARNING, Lamp Set by Event	Drop List	0 – Protect	See Table 10
MAXIMUM WARNING, SPN for Event	0...524287	520704 (\$7F200)	It is the user's responsibility to select an SPN that will not violate the J1939 standard.
MAXIMUM WARNING, FMI for Event	Drop List	3, Voltage Above Normal	See Table 11
MAXIMUM WARNING, Delay Before Event is Flagged	0...60000 ms	1000	
MINIMUM WARNING, Event Generates a DTC in DM1	Drop List	True	
MINIMUM WARNING, Lamp Set by Event	Drop List	0 – Protect	See Table 10
MAXIMUM WARNING, SPN for Event	0...524287	520960 (\$7F300)	It is the user's responsibility to select an SPN that will not violate the J1939 standard.
MINIMUM WARNING, FMI for Event	Drop List	4, Voltage Below Normal	See Table 11
MINIMUM WARNING, Delay Before Event is Flagged	0...60000 ms	1000	
MINIMUM SHUTDOWN, Event Generates a DTC in DM1	Drop List	True	
MINIMUM SHUTDOWN, Lamp Set by Event	Drop List	Amber Warning	See Table 10
MINIMUM SHUTDOWN, SPN for Event	0...524287	521216 (\$7F400)	It is the user's responsibility to select an SPN that will not violate the J1939 standard.
MINIMUM SHUTDOWN, FMI for Event	Drop List	4, Voltage Below Normal	See Table 11
MINIMUM SHUTDOWN, Delay Before Event is Flagged	0...60000 ms	1000	

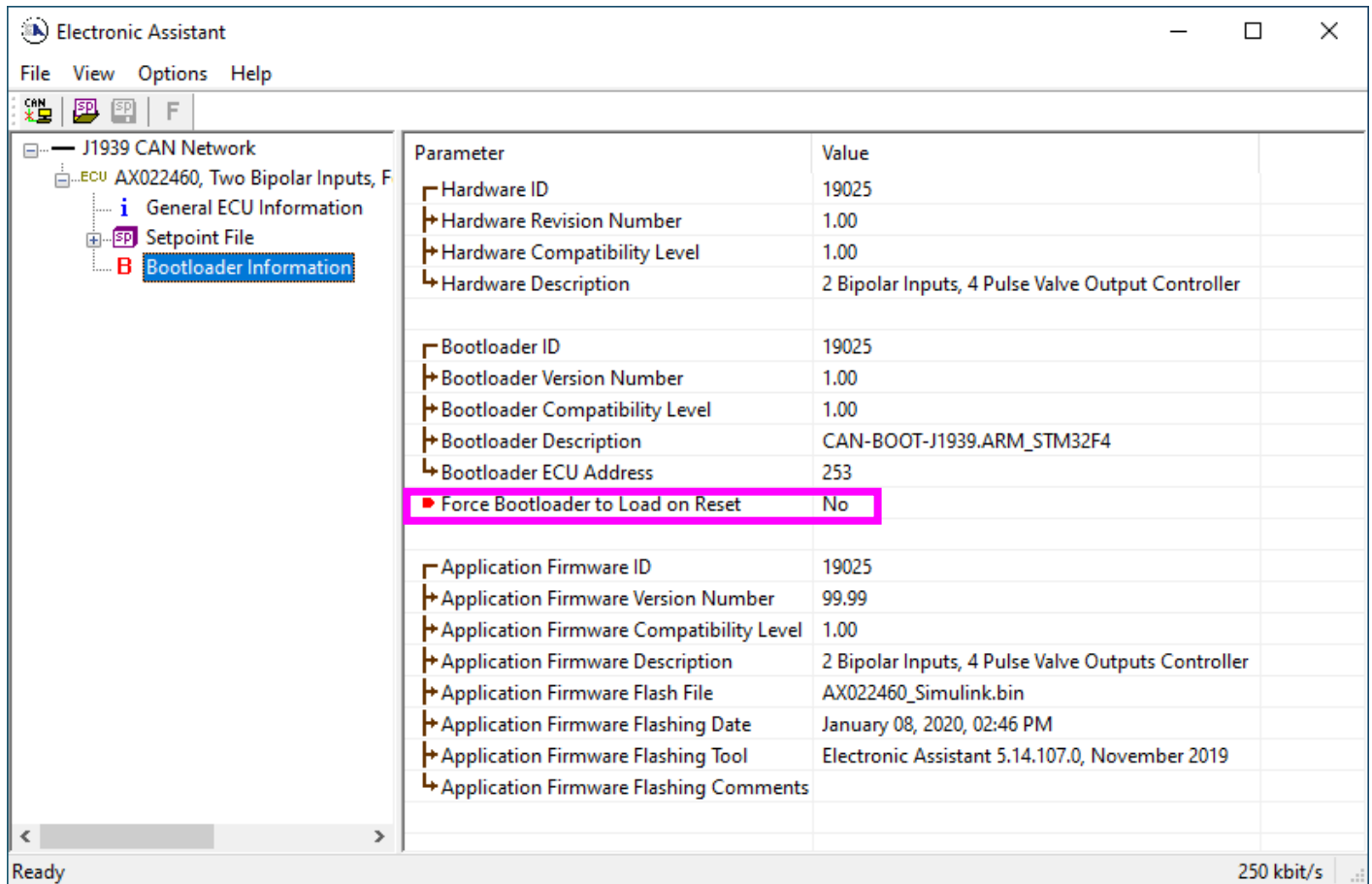
**Table 41 – Diagnostic Block Setpoints**

## 5. REFLASHING OVER CAN WITH THE AXIOMATIC EA BOOTLOADER

The AX022460 can be upgraded with new application firmware using the **Bootloader Information** section. This section details the simple step-by-step instructions to upload new firmware provided by Axiomatic onto the unit via CAN, without requiring it to be disconnected from the J1939 network.

*Note: To upgrade the firmware use Axiomatic Electronic Assistant VX.XX.XX.0 or higher.*

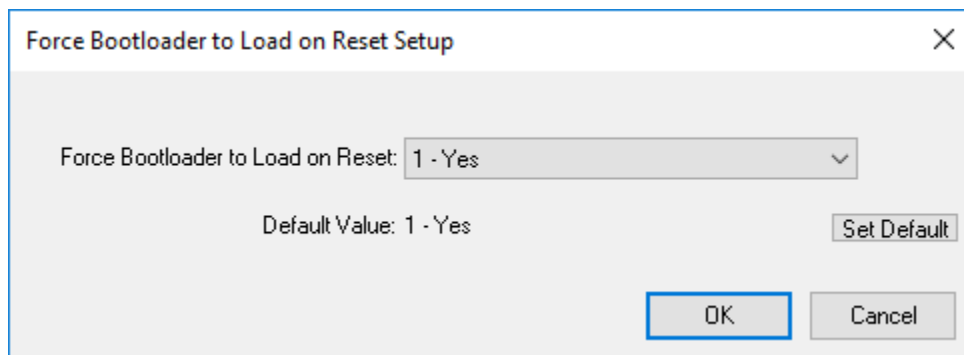
1. When the Axiomatic EA first connects to the ECU, the **Bootloader Information** section will display the following information.



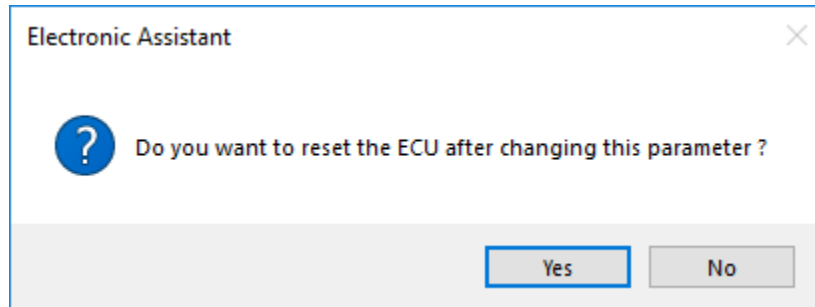
The screenshot shows the Electronic Assistant software interface. The left sidebar displays a tree view with 'Bootloader Information' selected. The main window shows a table of parameters and their values. The 'Force Bootloader to Load on Reset' parameter is highlighted in pink and set to 'No'.

Parameter	Value
Hardware ID	19025
Hardware Revision Number	1.00
Hardware Compatibility Level	1.00
Hardware Description	2 Bipolar Inputs, 4 Pulse Valve Output Controller
Bootloader ID	19025
Bootloader Version Number	1.00
Bootloader Compatibility Level	1.00
Bootloader Description	CAN-BOOT-J1939.ARM_STM32F4
Bootloader ECU Address	253
<b>Force Bootloader to Load on Reset</b>	<b>No</b>
Application Firmware ID	19025
Application Firmware Version Number	99.99
Application Firmware Compatibility Level	1.00
Application Firmware Description	2 Bipolar Inputs, 4 Pulse Valve Outputs Controller
Application Firmware Flash File	AX022460_Simulink.bin
Application Firmware Flashing Date	January 08, 2020, 02:46 PM
Application Firmware Flashing Tool	Electronic Assistant 5.14.107.0, November 2019
Application Firmware Flashing Comments	

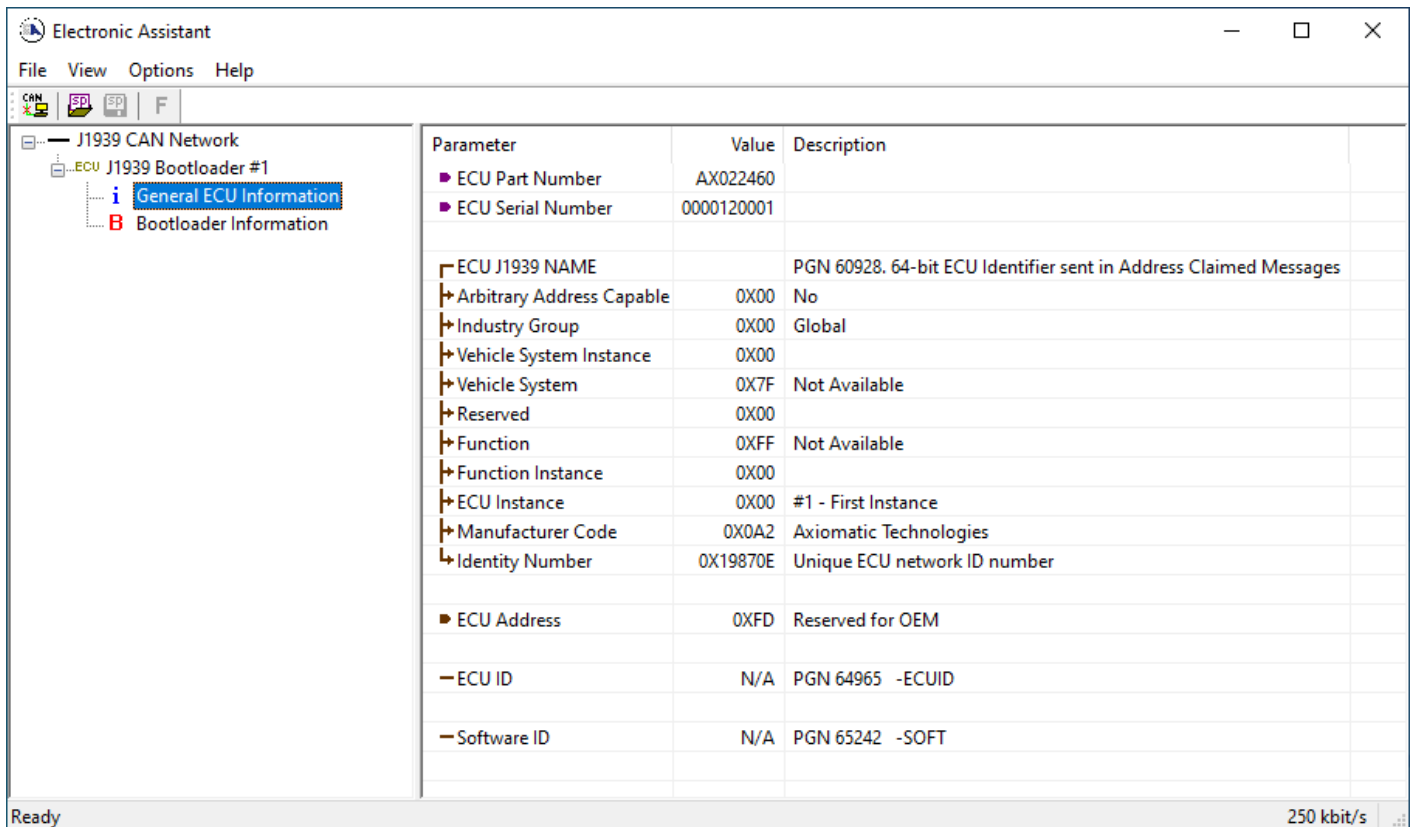
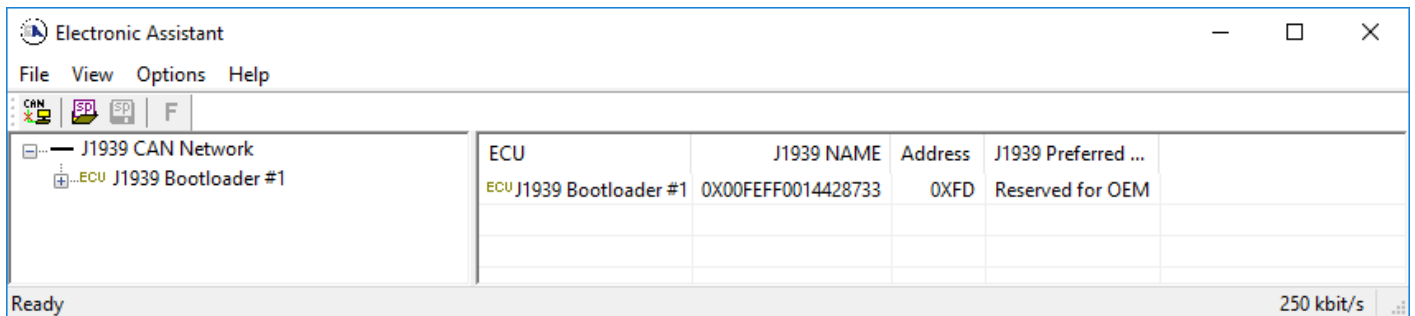
2. To use the bootloader to upgrade the firmware running on the ECU, change the variable “**Force Bootloader To Load on Reset**” to Yes.



3. When the prompt box asks if you want to reset the ECU, select Yes.



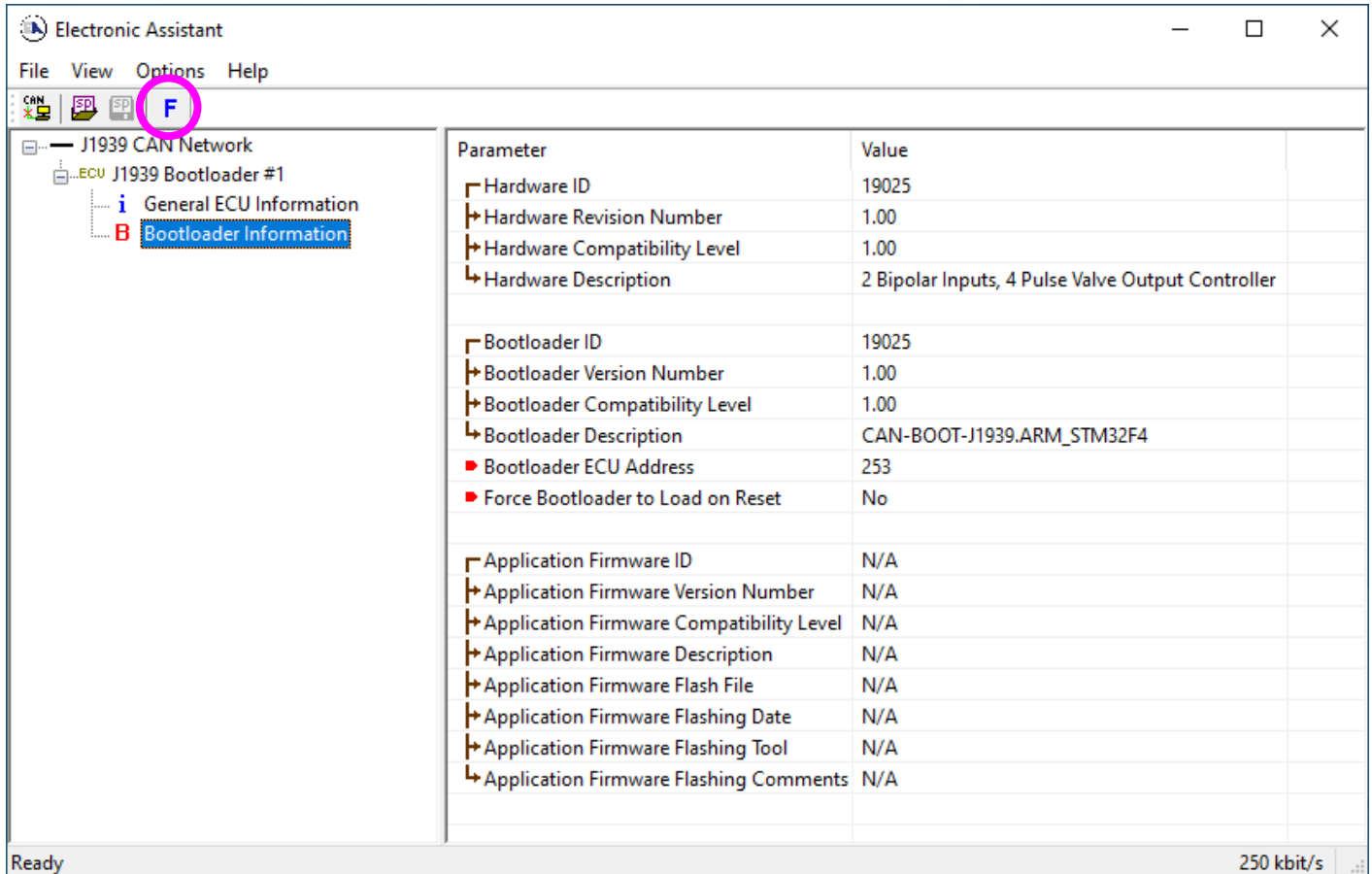
4. Upon reset, the ECU will no longer show up on the J1939 network as an AX022460 but rather as **J1939 Bootloader #1**.



*Note that the bootloader is NOT Arbitrary Address Capable. This means that if you want to have multiple bootloaders running simultaneously (not recommended) you would have to manually change the address for each one before activating the next, or there will be address conflicts. And*

only one ECU would show up as the bootloader. Once the 'active' bootloader returns to regular functionality, the other ECU(s) would have to be power cycled to re-activate the bootloader feature.

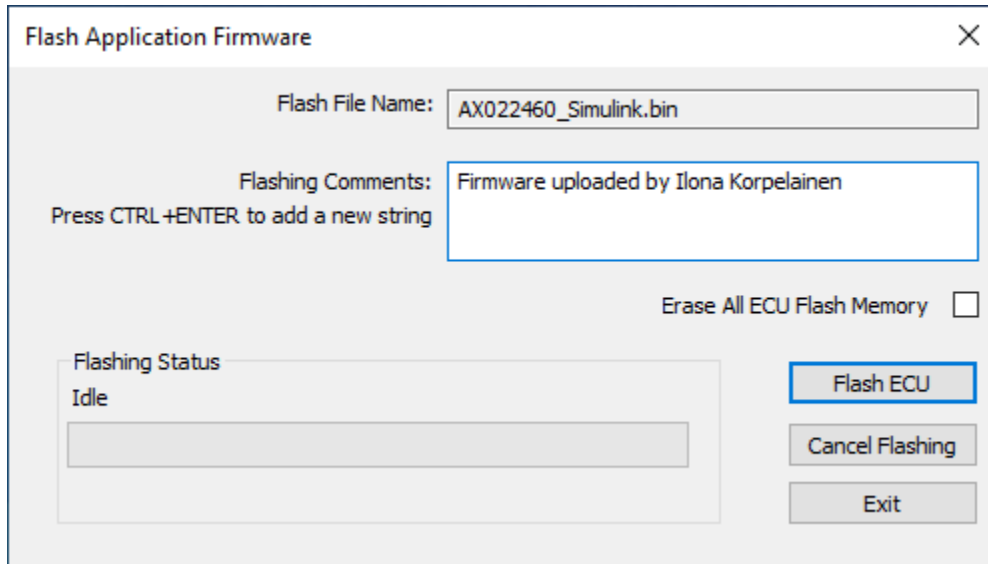
- When the **Bootloader Information** section is selected, the same information is shown as when it was running the AX022460 firmware, but in this case the **F**lashing feature has been enabled.



- Select the **F**lashing button and navigate to where you had saved the **AX022460\_Simulink.bin** file sent from Axiomatic. (Note: only binary (.bin) files can be flashed using the Axiomatic EA tool.)
- Once the Flash Application Firmware window opens, you can enter comments such as "Firmware upgraded by [Name]" if you so desire. This is not required, and you can leave the field blank if you do not want to use it.

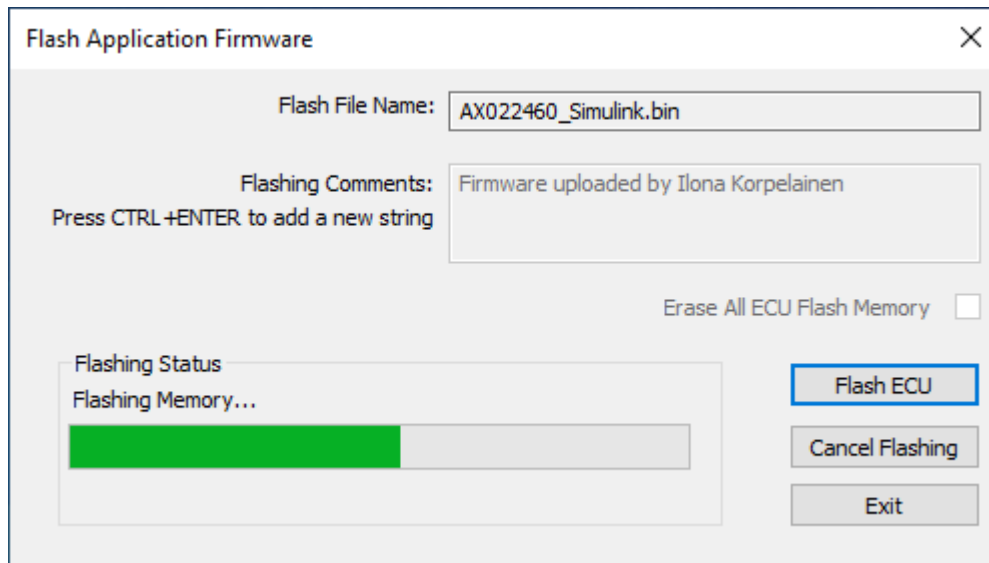
Note: You do not have to date-stamp or timestamp the file, as all of this is done automatically by the Axiomatic EA tool when you upload the new firmware.





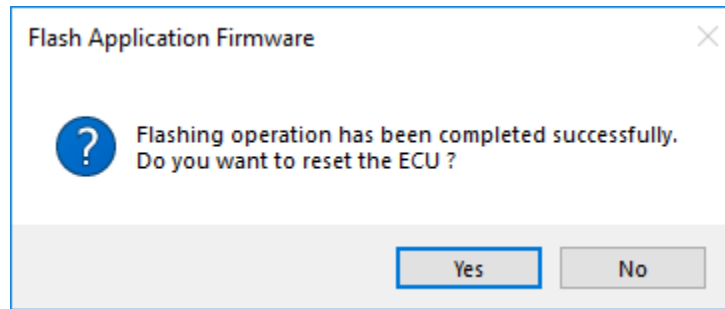
**WARNING:** Do not check the “Erase All ECU Flash Memory” box unless instructed to do so by your Axiomatic contact. Selecting this will erase ALL data stored in non-volatile flash including the calibration from Axiomatic factory testing. It will also erase any configuration of the setpoints that might have been done to the ECU and reset all setpoints to their factory defaults. By leaving this box unchecked, none of the setpoints will be changed when the new firmware is uploaded.

A progress bar will show how much of the firmware has been sent as the upload progresses. The more traffic there is on the J1939 network, the longer the upload process will take.



Once the firmware has finished uploading, a message will pop up indicating the successful operation. If you select to reset the ECU, the new version of the AX022460 application will start

running, and the ECU will be identified as such by the Axiomatic EA. Otherwise, the next time the ECU is power-cycled, the AX022460 application will run rather than the bootloader function.



Note: If at any time during the upload the process is interrupted, the data is corrupted (bad checksum) or for any other reason the new firmware is not correct, i.e. bootloader detects that the file loaded was not designed to run on the hardware platform, the bad or corrupted application will not run. Rather, when the ECU is reset or power-cycled the **J1939 Bootloader** will continue to be the default application until valid firmware has been successfully uploaded into the unit.

## APPENDIX A - TECHNICAL SPECIFICATION

### Technical Specifications:

Specifications are indicative and subject to change. Actual performance will vary depending on the application and operating conditions. Users should satisfy themselves that the product is suitable for use in the intended application. All our products carry a limited warranty against defects in material and workmanship. Please refer to our Warranty, Application Approvals/Limitations and Return Materials Process as described on <https://www.axiomatic.com/service/>.

### Power Supply

Power Supply Input	12 Vdc or 24 Vdc nominal 8...36 Vdc power supply range Shutdown voltage is 6.0 Vdc.
Protection	Reverse polarity protection is provided. Surge protection up to 150V is provided. Overvoltage shutdown of the output load is provided at 41V. Undervoltage protection (hardware and software shutdown at 6V) is provided.

### Inputs

2 Bipolar Analog or Digital Signal Inputs	User programmable as Voltage, Current, Frequency, RPM, PWM or Digital signal inputs types. Refer to Table 1.0.																																								
<b>Table 1.0 –User Programmable Bipolar Voltage or Other Signal Inputs</b>																																									
Analog & Digital Input Functions	Voltage Input, Current Input, Resistive Input or Digital Input 12-bit Analog to Digital resolution																																								
Voltage Input	0-5 V (Impedance 110 k $\Omega$ ) 0-10 V (Impedance 130 k $\Omega$ ) +/- 5V (Impedance 110 k $\Omega$ ) +/- 10V (Impedance 130 k $\Omega$ ) 1mV resolution, accuracy +/- 0.2% error																																								
Current Input	0-20 mA (Impedance 124 $\Omega$ ) 4-20 mA (Impedance 124 $\Omega$ ) 1 $\mu$ A resolution, accuracy +/- 0.2% error																																								
Digital Input Level	Accepts 5 V TTL Accepts up to Vps Threshold: Low <1 V High >2.2 V																																								
Digital Input	1 M $\Omega$ Impedance Active High or Active Low with 10 k $\Omega$ pull-up or pull-down																																								
Timer Input Functions	PWM Input, Frequency Input or RPM Input																																								
PWM Input	Low Frequency (0.50 Hz to 1 kHz) High Frequency (100 Hz to 10 kHz) 0 to 100% D.C. 0.01% resolution, accuracy +/- 0.1% error																																								
Frequency/RPM Input	0.5 Hz to 50 Hz; 10 Hz to 1 kHz; or 100 Hz to 20 kHz 0.01% resolution, accuracy +/- 0.1% error																																								
Maximum and Minimum Ratings	<table border="1"> <thead> <tr> <th>Characteristic</th> <th>Min</th> <th>Max</th> <th>Units</th> </tr> </thead> <tbody> <tr> <td>Power Supply</td> <td>8</td> <td>36</td> <td>V dc</td> </tr> <tr> <td>Voltage Input</td> <td>0</td> <td>36</td> <td>V dc</td> </tr> <tr> <td>Current Input 0(4)-20 mA</td> <td>0</td> <td>12</td> <td>Vdc</td> </tr> <tr> <td>Digital Input</td> <td>0</td> <td>36</td> <td>Vdc</td> </tr> <tr> <td>PWM Duty Cycle</td> <td>0</td> <td>100</td> <td>%</td> </tr> <tr> <td>PWM Low Frequency</td> <td>10</td> <td>1 000</td> <td>Hz</td> </tr> <tr> <td>PWM High Frequency</td> <td>100</td> <td>10 000</td> <td>Hz</td> </tr> <tr> <td>PWM Voltage pk - pk</td> <td>0</td> <td>36</td> <td>V dc</td> </tr> <tr> <td>RPM Frequency</td> <td>0.5</td> <td>20 000</td> <td>Hz</td> </tr> </tbody> </table>	Characteristic	Min	Max	Units	Power Supply	8	36	V dc	Voltage Input	0	36	V dc	Current Input 0(4)-20 mA	0	12	Vdc	Digital Input	0	36	Vdc	PWM Duty Cycle	0	100	%	PWM Low Frequency	10	1 000	Hz	PWM High Frequency	100	10 000	Hz	PWM Voltage pk - pk	0	36	V dc	RPM Frequency	0.5	20 000	Hz
Characteristic	Min	Max	Units																																						
Power Supply	8	36	V dc																																						
Voltage Input	0	36	V dc																																						
Current Input 0(4)-20 mA	0	12	Vdc																																						
Digital Input	0	36	Vdc																																						
PWM Duty Cycle	0	100	%																																						
PWM Low Frequency	10	1 000	Hz																																						
PWM High Frequency	100	10 000	Hz																																						
PWM Voltage pk - pk	0	36	V dc																																						
RPM Frequency	0.5	20 000	Hz																																						

Protection	All inputs are protected against short to GND. All inputs, except current inputs, are protected against shorts to Nominal Vps (36Vdc).
Sampling Time	10ms
Analog GND References	Three GND connections are provided.
+5V Reference	One +5V Reference, +/- 0.5%, 100 mA

## Outputs

Pulse Valve Outputs	Four Pulse Type Valve Outputs  Four independent outputs are PWM type Model AX022460-03 is factory set at 33Hz Model AX022460-04 is factory set at 75Hz  Output type: Up to 2.0A sourcing (high-side)  All outputs have configurable minimum and maximum level.
Protection	Fully protected against short circuit to ground or +Vps Grounded short circuit protection will engage at 4.0A +/- 0.5A. Unit will fail safe in the case of a short-circuit condition and is self-recovering when the short is removed.
Power GND Reference	Four (4) are provided.

## General Specifications

Microprocessor	STM32F407VG, 32-bit, 1MByte flash memory
Quiescent Current	85mA @ 12V; 59 mA @ 24V Typical
LED Indicator	1 bicolour LED (Red and Green) Input fault indication.
CAN Communications	1 CAN port (SAE J1939, 250 kbps baud rate)
Control Logic	User programmable functionality using the Axiomatic Electronic Assistant service tool Refer to the User Manual for details.
CAN Communications	Compliant to SAE CAN J1939 Standard 1 CAN port (SAE J1939)
User Interface	The Axiomatic Electronic Assistant KIT, P/Ns: <b>AX070502</b> or <b>AX070506K</b>
Software Reflashing	The Axiomatic Electronic Assistant KIT, P/Ns: <b>AX070502</b> or <b>AX070506K</b>
CAN Response Time	Per the J1939 standard, the maximum recommended transmit rate for any message is 10ms. Response time of feedback on the CAN to changes at the I/O will be a combination of the I/O type's response time and the configurable software filtering, ramps, delays, etc. that were selected in the application.
Compliance	CE marking
Protection	Protection IP20
Weight	0.25 lb. (0.113 kg)
Temperature Rating	Operating: -40 to 85°C (-40 to 185°F) Storage: -50 to 105°C (-58 to 221°F)
Enclosure and Dimensions	Phoenix Contact: PHO ME MAX 22.5 2-2 KMGY – 2713625 (vented) Polyamide, UL94V0, cULus recognized, China RoHS DIN rail TH 35-7.5 99 x 114.5 x 22.6 mm (L x H x D) Refer to Figure 2.0.
Electrical Conn	4 Phoenix Contact PSPT 2,5/ 4-ST KMGY spring clamp connectors Accepts 24-14 AWG wire. Refer to Table 3.0 and Figure 2.0. for pin out.
Installation	DIN rail mount, TH 35-7.5
Network Termination	It is necessary to terminate the network with external termination resistors. The resistors are 120 Ohm, 0.25W minimum, metal film or similar type. They should be placed between CAN_H and CAN_L terminals at both ends of the network.

## OUR PRODUCTS

AC/DC Power Supplies  
Actuator Controls/Interfaces  
Automotive Ethernet Interfaces  
Battery Chargers  
CAN Controls, Routers, Repeaters  
CAN/WiFi, CAN/Bluetooth, Routers  
Current/Voltage/PWM Converters  
DC/DC Power Converters  
Engine Temperature Scanners  
Ethernet/CAN Converters,  
Gateways, Switches  
Fan Drive Controllers  
Gateways, CAN/Modbus, RS-232  
Gyroscopes, Inclinometers  
Hydraulic Valve Controllers  
Inclinometers, Triaxial  
I/O Controls  
LVDT Signal Converters  
Machine Controls  
Modbus, RS-422, RS-485 Controls  
Motor Controls, Inverters  
Power Supplies, DC/DC, AC/DC  
PWM Signal Converters/Isolators  
Resolver Signal Conditioners  
Service Tools  
Signal Conditioners, Converters  
Strain Gauge CAN Controls  
Surge Suppressors

## OUR COMPANY

Axiomatic provides electronic machine control components to the off-highway, commercial vehicle, electric vehicle, power generator set, material handling, renewable energy and industrial OEM markets. ***We innovate with engineered and off-the-shelf machine controls that add value for our customers.***

## QUALITY DESIGN AND MANUFACTURING

We have an ISO9001:2015 registered design/manufacturing facility in Canada.

## WARRANTY, APPLICATION APPROVALS/LIMITATIONS

Axiomatic Technologies Corporation reserves the right to make corrections, modifications, enhancements, improvements, and other changes to its products and services at any time and to discontinue any product or service without notice. Customers should obtain the latest relevant information before placing orders and should verify that such information is current and complete. Users should satisfy themselves that the product is suitable for use in the intended application. All our products carry a limited warranty against defects in material and workmanship. Please refer to our Warranty, Application Approvals/Limitations and Return Materials Process at <https://www.axiomatic.com/service/>.

## COMPLIANCE

Product compliance details can be found in the product literature and/or on [axiomatic.com](http://axiomatic.com). Any inquiries should be sent to [sales@axiomatic.com](mailto:sales@axiomatic.com).

## SAFE USE

All products should be serviced by Axiomatic. Do not open the product and perform the service yourself.



This product can expose you to chemicals which are known in the State of California, USA to cause cancer and reproductive harm. For more information go to [www.P65Warnings.ca.gov](http://www.P65Warnings.ca.gov).

## SERVICE

All products to be returned to Axiomatic require a Return Materials Authorization Number (RMA#) from [sales@axiomatic.com](mailto:sales@axiomatic.com). Please provide the following information when requesting an RMA number:

- Serial number, part number
- Runtime hours, description of problem
- Wiring set up diagram, application and other comments as needed

## DISPOSAL

Axiomatic products are electronic waste. Please follow your local environmental waste and recycling laws, regulations and policies for safe disposal or recycling of electronic waste.

## CONTACTS

**Axiomatic Technologies Corporation**  
1445 Courtneypark Drive E.  
Mississauga, ON  
CANADA L5T 2E3  
TEL: +1 905 602 9270  
FAX: +1 905 602 9279  
[www.axiomatic.com](http://www.axiomatic.com)  
[sales@axiomatic.com](mailto:sales@axiomatic.com)

**Axiomatic Technologies Oy**  
Höytämöntie 6  
33880 Lempäälä  
FINLAND  
TEL: +358 103 375 750  
[www.axiomatic.com](http://www.axiomatic.com)  
[salesfinland@axiomatic.com](mailto:salesfinland@axiomatic.com)