

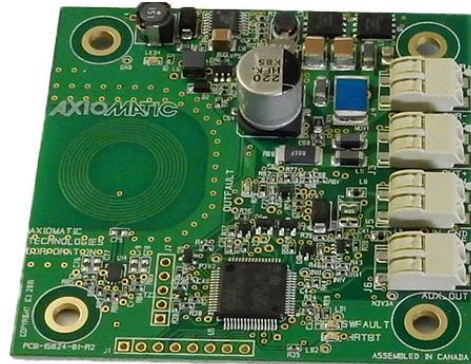
Universal Input, Single Output Valve Controller

With Near Field Communication (NFC)
Configurable with Android and Apple iOS Devices and Smartphones

P/N: AX020700

Features:

- 1 universal signal input, user selectable as:
 - Voltage;
 - Current;
 - PWM;
 - Frequency;
 - or Digital.
- 1 output drives a solenoid, user selectable as:
 - proportional current 0-3 A;
 - proportional voltage up to Vps;
 - PWM signal;
 - or digital on/off.
- 1 auxiliary 0-5V output feedback
- +5V Reference output;
- 12Vdc, 24Vdc nominal
- PCB assembly with four (4) 2-pin push-in terminal blocks
- Multiple LED indicators
- Smartphone with E-Write NFC Android application configures the controller when placed in proximity. The application is also available for Apple iOS devices like iPhones.
- E-Write NFC provides flexible user configurability for application-specific input-output relationship with slope or time response.
- Protected and secure communication



Ordering Part Number:

AX020700 – Universal Input, Single Valve Controller, NFC, 4 2-pin Push-In Terminals, PCB

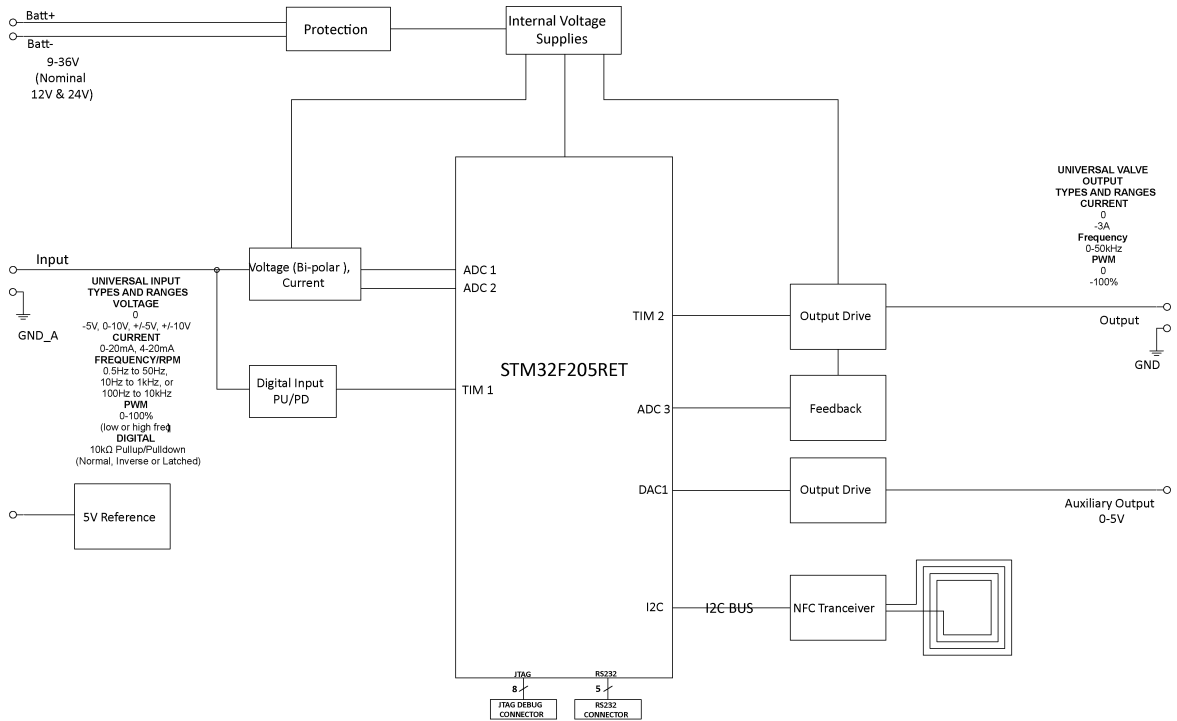
Description:

As a highly flexible controller, it accepts one command signal input and drives a solenoid up to 3A. Many control profile parameters are user configurable. A PCB form factor is available. Operation is from -40 to 85 °C. Designed to interface with 12V or 24V battery power, it is suitable for machine and industrial applications.

Using Near Field Communication (NFC), the wireless valve controller is remotely configurable via a smartphone application. Bringing the two devices within 3 cm* (1 inch) of each other, the NFC technology uses magnetic induction between two loop antennas to communicate within the globally available radio frequency ISM band of 13.56 MHz.

**The distance will vary with different phones.*

BLOCK DIAGRAM



Technical Specifications:

Specifications are indicative and subject to change. Actual performance will vary depending on the application and operating conditions. Users should satisfy themselves that the product is suitable for use in the intended application. All our products carry a limited warranty against defects in material and workmanship. Please refer to our Warranty, Application Approvals/Limitations and Return Materials Process as described on <https://www.axiomatic.com/service/>.

All specifications typical at nominal input voltage and 25°C unless otherwise specified.

Input Specifications

Power Supply Input - Nominal	12Vdc or 24Vdc nominal (9...36 VDC power supply range)
Protection	Reverse polarity protection is provided. Overvoltage protection up to 45V is provided. Overvoltage (undervoltage) shutdown of the output load is provided.
Universal Signal Input	Refer to Table 1.0 All inputs are user selectable.

Table 1.0 –User Configurable Universal Input																																									
Analog Input Functions	Voltage Input or Current Input																																								
Voltage Input	0-5 V (Impedance 110 kΩ) 0-10 V (Impedance 130 kΩ) +/- 5V (Impedance 110 kΩ) +/- 10V (Impedance 130 kΩ)																																								
Current Input	0-20 mA (Impedance 249 Ω) 4-20 mA (Impedance 249 Ω)																																								
Discrete Input Functions	Digital Input, PWM Input or Frequency Input																																								
Input	12-bit ADC																																								
Digital Input Level	Accepts 5V TTL and up to Vps Threshold: Low <1 V; High >2.2 V																																								
Digital Input	Active High or Active Low Amplitude: 0 to +Vps																																								
Input Impedance	1 MOhm High impedance, 10KOhm pull down, 10KOhm pull up to +6V																																								
PWM Input	Low Frequency (10 Hz to 1 kHz) High Frequency (100 Hz to 10 kHz) 0 to 100% D.C.																																								
Frequency Input	0.5 Hz to 50 Hz; 10 Hz to 1 kHz; or 100 Hz to 10 kHz 1 to 99% D.C.																																								
Input Accuracy	< 1%																																								
Input	16-bit Timer																																								
Maximum and Minimum Ratings	<table border="1"> <thead> <tr> <th>Characteristic</th> <th>Min</th> <th>Max</th> <th>Units</th> </tr> </thead> <tbody> <tr> <td>Power Supply</td> <td>9</td> <td>36</td> <td>V dc</td> </tr> <tr> <td>Voltage Input</td> <td>0</td> <td>36</td> <td>V dc</td> </tr> <tr> <td>Current Input 0(4)-20 mA</td> <td>0</td> <td>12</td> <td>Vdc</td> </tr> <tr> <td>Digital Input</td> <td>0</td> <td>36</td> <td>Vdc</td> </tr> <tr> <td>PWM Duty Cycle</td> <td>0</td> <td>100</td> <td>%</td> </tr> <tr> <td>PWM Low Frequency</td> <td>10</td> <td>1 000</td> <td>Hz</td> </tr> <tr> <td>PWM High Frequency</td> <td>100</td> <td>10 000</td> <td>Hz</td> </tr> <tr> <td>PWM Voltage pk - pk</td> <td>0</td> <td>36</td> <td>V dc</td> </tr> <tr> <td>Frequency</td> <td>0.5</td> <td>10 000</td> <td>Hz</td> </tr> </tbody> </table>	Characteristic	Min	Max	Units	Power Supply	9	36	V dc	Voltage Input	0	36	V dc	Current Input 0(4)-20 mA	0	12	Vdc	Digital Input	0	36	Vdc	PWM Duty Cycle	0	100	%	PWM Low Frequency	10	1 000	Hz	PWM High Frequency	100	10 000	Hz	PWM Voltage pk - pk	0	36	V dc	Frequency	0.5	10 000	Hz
Characteristic	Min	Max	Units																																						
Power Supply	9	36	V dc																																						
Voltage Input	0	36	V dc																																						
Current Input 0(4)-20 mA	0	12	Vdc																																						
Digital Input	0	36	Vdc																																						
PWM Duty Cycle	0	100	%																																						
PWM Low Frequency	10	1 000	Hz																																						
PWM High Frequency	100	10 000	Hz																																						
PWM Voltage pk - pk	0	36	V dc																																						
Frequency	0.5	10 000	Hz																																						

Lookup Table Specifications

Lookup Table	Can be used to create different input-to-output responses Ramp or Time Response Up to 5 Slopes/Time slots The user can map the Universal Input as control to the Lookup Table and configure the required slopes for the output
--------------	---

Output Specifications

Output	Up to 3A Half-bridge, High Side Sourcing, Current Sensing, Grounded Load High Frequency (25 kHz) The user can select the following options for output using the E-Write NFC. <ul style="list-style-type: none"> Proportional Output Current (with current sensing) (0-3A) Proportional Output Voltage (up to Vps) Output PWM Duty Cycle (0-100% D.C.) Digital On/Off (Gnd-Vps) 																					
Configurable Parameters	Refer to Table 2.0.																					
<table border="1"> <thead> <tr> <th colspan="3">Table 2.0 Configurable Output Parameters</th> </tr> <tr> <th>Parameter</th> <th>Minimum Range</th> <th>Maximum Range</th> </tr> </thead> <tbody> <tr> <td>Output Current</td> <td>0A</td> <td>3A</td> </tr> <tr> <td>Ramp Up / Ramp Down</td> <td>0ms (no ramp)</td> <td>60,000ms</td> </tr> <tr> <td>Dither amplitude (level)</td> <td>0mA (no dither)</td> <td>400mA</td> </tr> <tr> <td>Current dither frequency</td> <td>50Hz</td> <td>500Hz</td> </tr> <tr> <td>PWM frequency</td> <td>1Hz</td> <td>25kHz</td> </tr> </tbody> </table>		Table 2.0 Configurable Output Parameters			Parameter	Minimum Range	Maximum Range	Output Current	0A	3A	Ramp Up / Ramp Down	0ms (no ramp)	60,000ms	Dither amplitude (level)	0mA (no dither)	400mA	Current dither frequency	50Hz	500Hz	PWM frequency	1Hz	25kHz
Table 2.0 Configurable Output Parameters																						
Parameter	Minimum Range	Maximum Range																				
Output Current	0A	3A																				
Ramp Up / Ramp Down	0ms (no ramp)	60,000ms																				
Dither amplitude (level)	0mA (no dither)	400mA																				
Current dither frequency	50Hz	500Hz																				
PWM frequency	1Hz	25kHz																				
Output Accuracy	Output Current mode $\leq 1\%$ Output Voltage mode $\leq 1\%$ Output PWM Duty Cycle mode $\leq 1\%$																					

Output Resolution	Output Current mode 1 mA Output Voltage mode 0.1V Output PWM mode 0.1%
Protection	Overcurrent and short circuit protection
Auxiliary Output	0-5V output is proportional to the proportional output range. Short circuit protection is provided.
Auxiliary Output Scale	20% of proportional output range
Voltage Reference	+5V, 50 mA maximum load

General Specifications

Microprocessor	STM32F205RET6 32-bit, 512 Kbit program flash																		
Quiescent Current	34 mA @ 24Vdc																		
LED Indicator	Power, heartbeat, input fault indication and output fault indication																		
Control Logic	User configurable																		
Communications	Near Field Communication Full-duplex Data rate: 106 kbit/s Complies with ISO1443 (RF protocol), ISO13239, and ISO7816 Protected and secure configuration																		
User Interface	E-WRITE NFC Application is available from Google Play for Android devices. https://play.google.com/store/apps/details?id=axiomatic.nfcproject The application is also available for Apple iOS devices like iPhones.																		
Operating Conditions	-40 to 85 °C (-40 to 185 °F)																		
Dimensions	2.70 x 2.72 x 0.75 inches (68.59 x 69.09 x 19.00 mm) L x W x H Refer to the dimensional drawing Figure 1.																		
Protection	IP00 for PCB																		
Vibration - Pending	MIL-STD-202G, Method 204D test condition C (Sine) and Method 214A, test condition B (Random) 10 g peak (Sine) 7.68 Grms peak (Random)																		
Shock - Pending	MIL- STD-202G, Method 213B, test condition A 50g (half sine pulse, 9ms long, 8 per axis)																		
Approvals	CE / UKCA marking																		
Weight	0.05 lb. (0.023 kg)																		
Electrical Connections	Model AX020700: 4 2-pin push-in terminal blocks (Wago P/N: 2060-402/998-404) Use 18-20 AWG wire for connection to power and solenoid. <table border="1" data-bbox="589 1150 1040 1419"> <thead> <tr> <th>PIN #</th> <th>FUNCTION</th> </tr> </thead> <tbody> <tr> <td>1</td> <td>POWER +</td> </tr> <tr> <td>2</td> <td>POWER -</td> </tr> <tr> <td>3</td> <td>SOLENOID -</td> </tr> <tr> <td>4</td> <td>SOLENOID +</td> </tr> <tr> <td>5</td> <td>INPUT +</td> </tr> <tr> <td>6</td> <td>INPUT GND</td> </tr> <tr> <td>7</td> <td>+5V REFERENCE</td> </tr> <tr> <td>8</td> <td>AUXILIARY OUTPUT</td> </tr> </tbody> </table>	PIN #	FUNCTION	1	POWER +	2	POWER -	3	SOLENOID -	4	SOLENOID +	5	INPUT +	6	INPUT GND	7	+5V REFERENCE	8	AUXILIARY OUTPUT
PIN #	FUNCTION																		
1	POWER +																		
2	POWER -																		
3	SOLENOID -																		
4	SOLENOID +																		
5	INPUT +																		
6	INPUT GND																		
7	+5V REFERENCE																		
8	AUXILIARY OUTPUT																		
Mounting	Program the unit before installing in a control panel or box. Mounting holes are sized for #6 or M4 bolts. The bolt length will be determined by the end-user's mounting plate thickness. The mounting flange of the controller is 0.062 inches (1.5 mm) thick. If the module is mounted without an enclosure, it should be mounted vertically with connectors facing left or right to reduce likelihood of moisture entry. All field wiring should be suitable for the operating temperature range. Install the unit with appropriate space available for servicing and for adequate wire harness access.																		

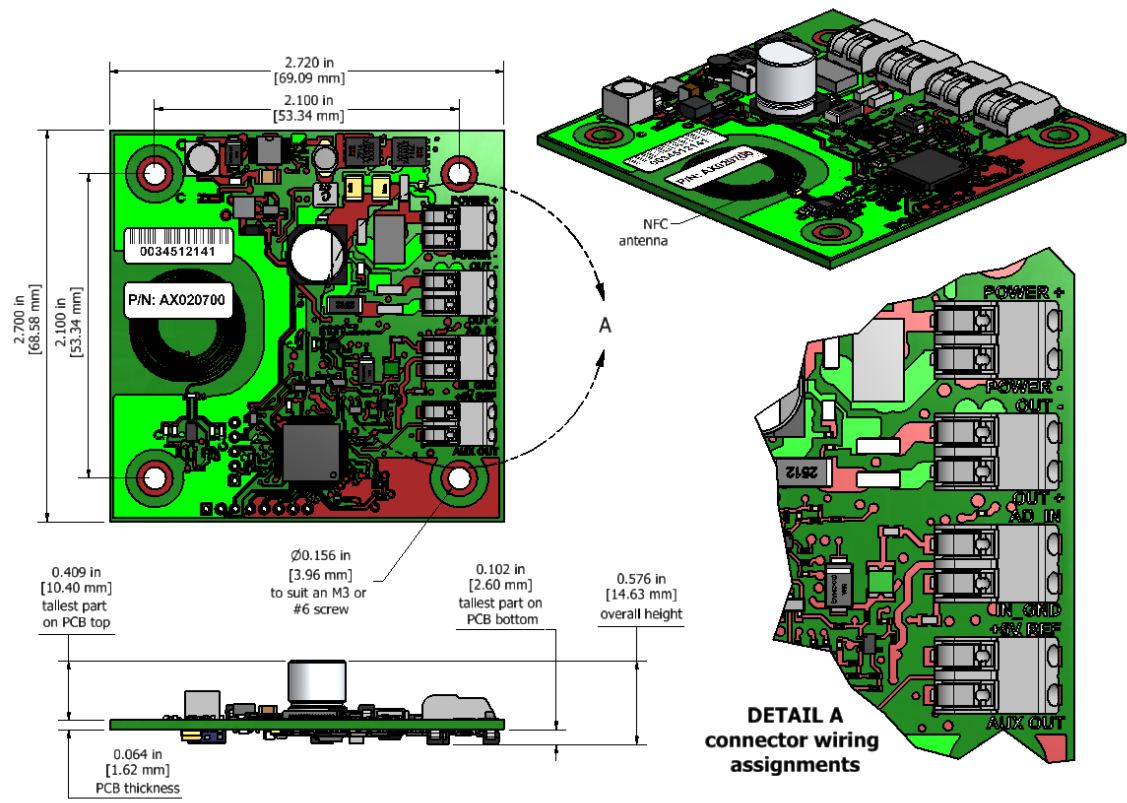


Figure 1.0. – Dimensional Drawing of AX020700

Form: TDAX020700A-02/13/2024