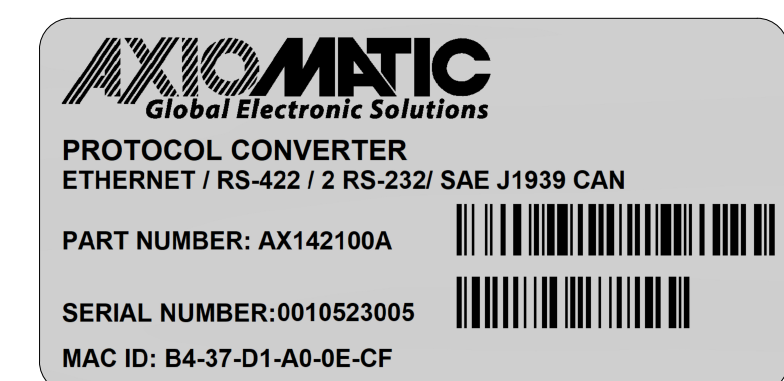
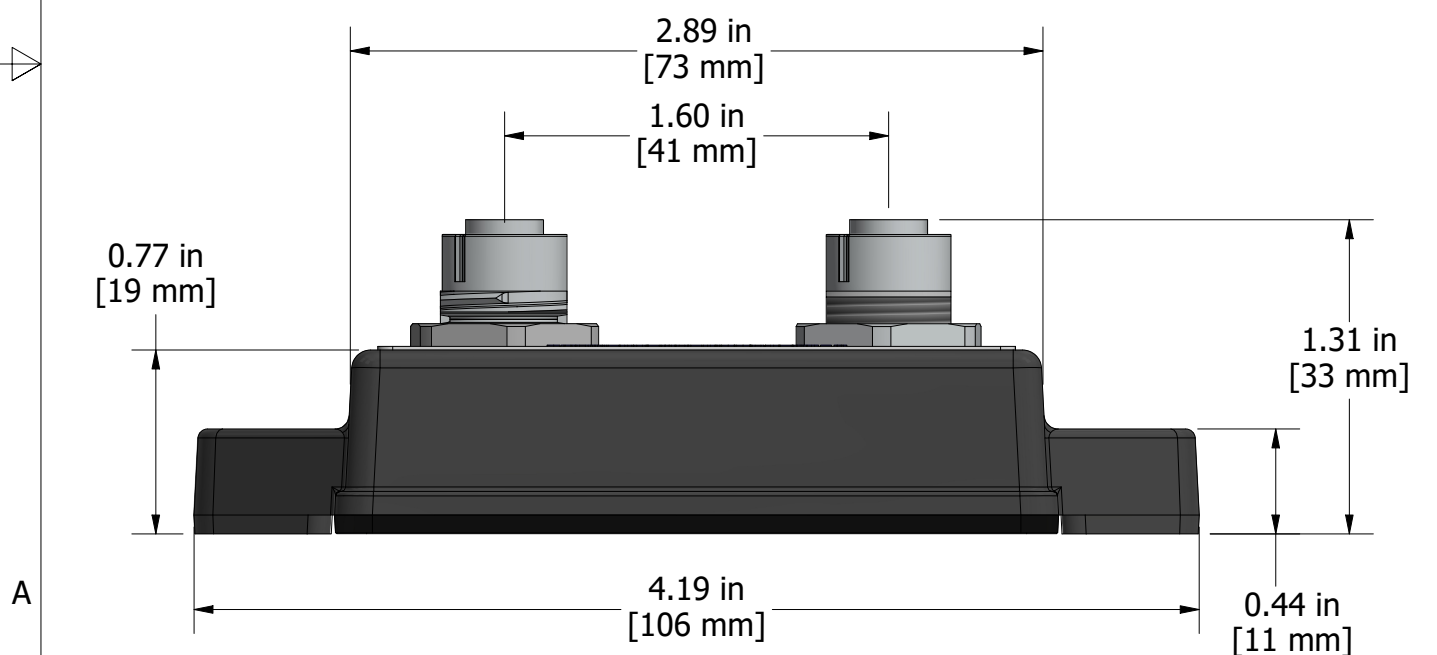
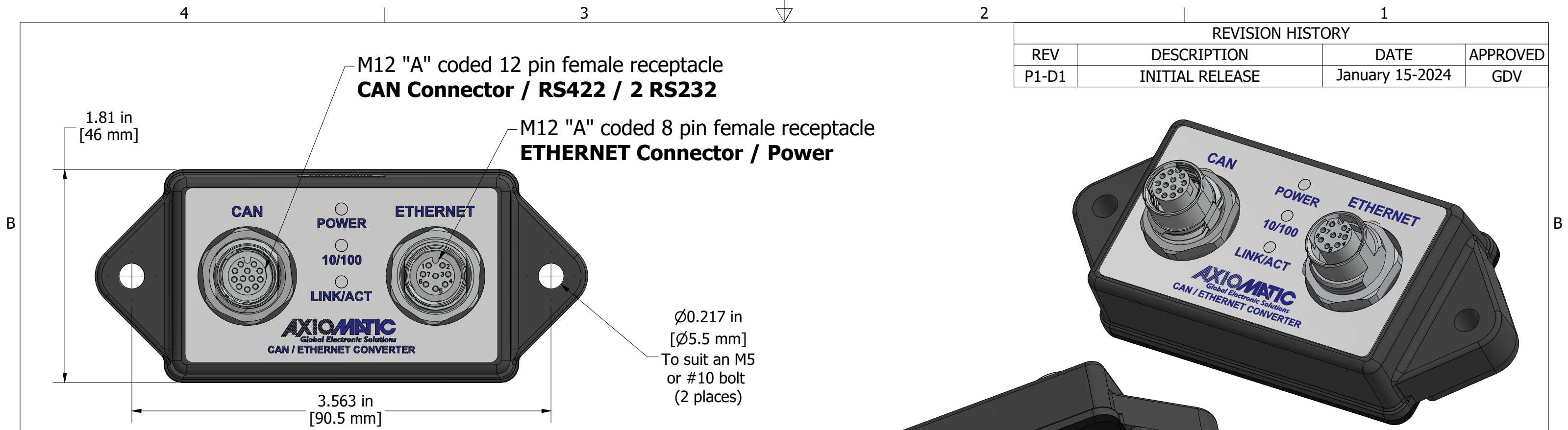
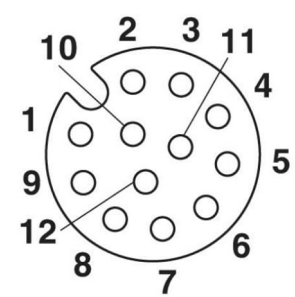


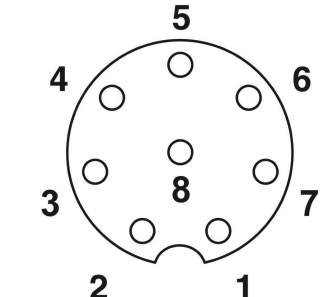
REVISION HISTORY			
REV	DESCRIPTION	DATE	APPROVED
P1-D1	INITIAL RELEASE	January 15-2024	GDV



M12 12 PIN FEMALE CONNECTOR			
PIN	FUNCTION	PIN	FUNCTION
1	RS422_RX+	7	CAN_H
2	RS422_TX+	8	RS232_TX1
3	RS422_RX-	9	RS232_RX1
4	RS232_TX2	10	RS422_TX-
5	RS232_RX2	11	GND
6	CAN_L	12	GND



M12 8 PIN FEMALE CONNECTOR			
PIN	FUNCTION	PIN	FUNCTION
1	PWR+	5	ETH_RX+
2	PWR-	6	ETH_TX+
3	PWR-	7	PWR+
4	ETH_TX-	8	ETH_RX-



MATERIAL NA		DRAWN TF	DATE 2024-01-15	TITLE Protocol Converter, H7, Ethernet / RS-422 / 2 RS-232 / SAE J1939 CAN	
FINISH NA		CHECKED	DATE	DWG REV D1	DWG NO AX142100A-MD
THIRD ANGLE PROJECTION		TOOL INVENTOR SIZE B	APPROVED DATE	SCALE 1.25	PART NO AX142100A
<small>PROPRIETARY THE INFORMATION CONTAINED IN THIS DRAWING IS CONFIDENTIAL AND PROPRIETARY AND REMAINS THE EXCLUSIVE PROPERTY OF AXIOMATIC TECHNOLOGIES CORPORATION. THIS DRAWING MAY NOT BE USED, REPRODUCED IN WHOLE OR IN PART, NOR REVEALED TO OTHERS WITHOUT THE PRIOR WRITTEN CONSENT OF AXIOMATIC TECHNOLOGIES CORPORATION. BY ACCEPTANCE OF THIS DRAWING, THE BEARER AGREES TO THESE CONDITIONS.</small>				<small>AXIOMATIC TECHNOLOGIES CORPORATION 1445 Courtneypark Dr. MISSISSAUGA, ON CANADA L5T2E3 905-602-9270</small>	
				SHEET 1 of 1	