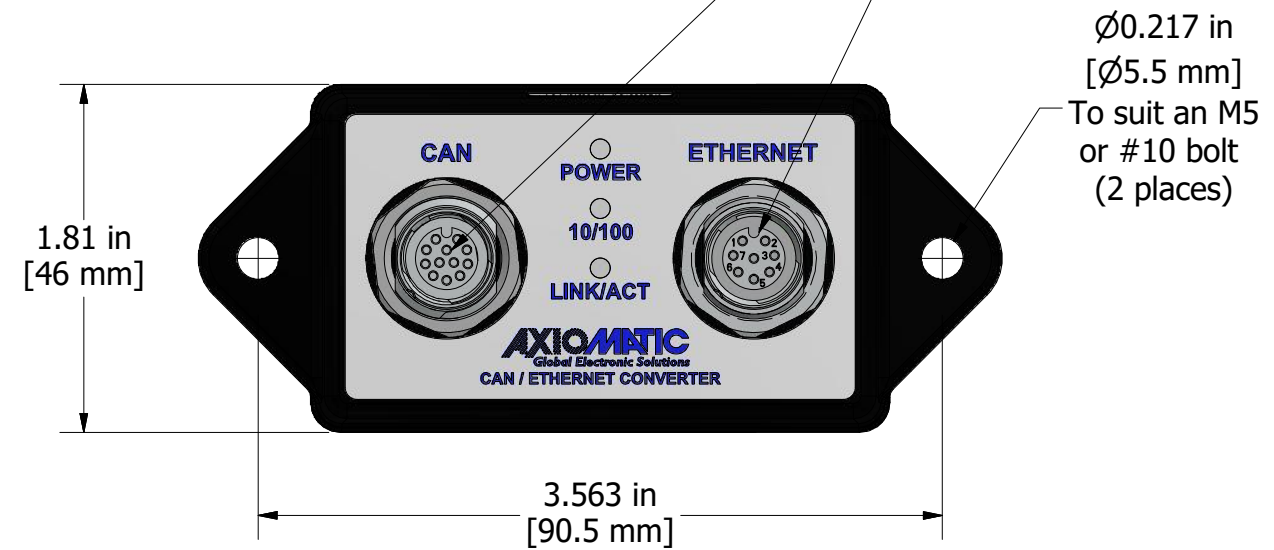


M12 "A" coded 12 pin female receptacle
CAN Connector / RS422 / 2 RS232

M12 "A" coded 8 pin female receptacle
ETHERNET Connector / Power

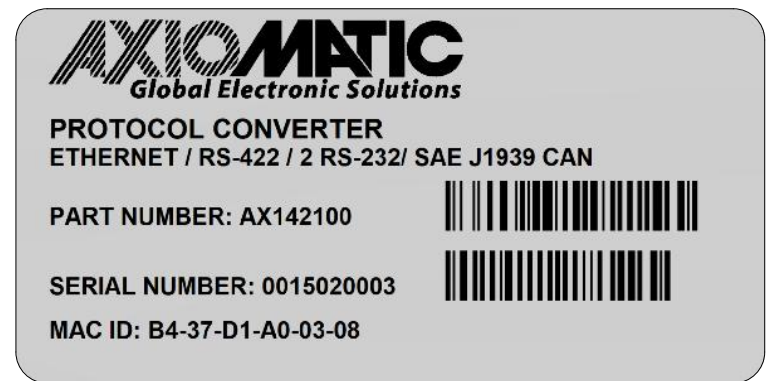
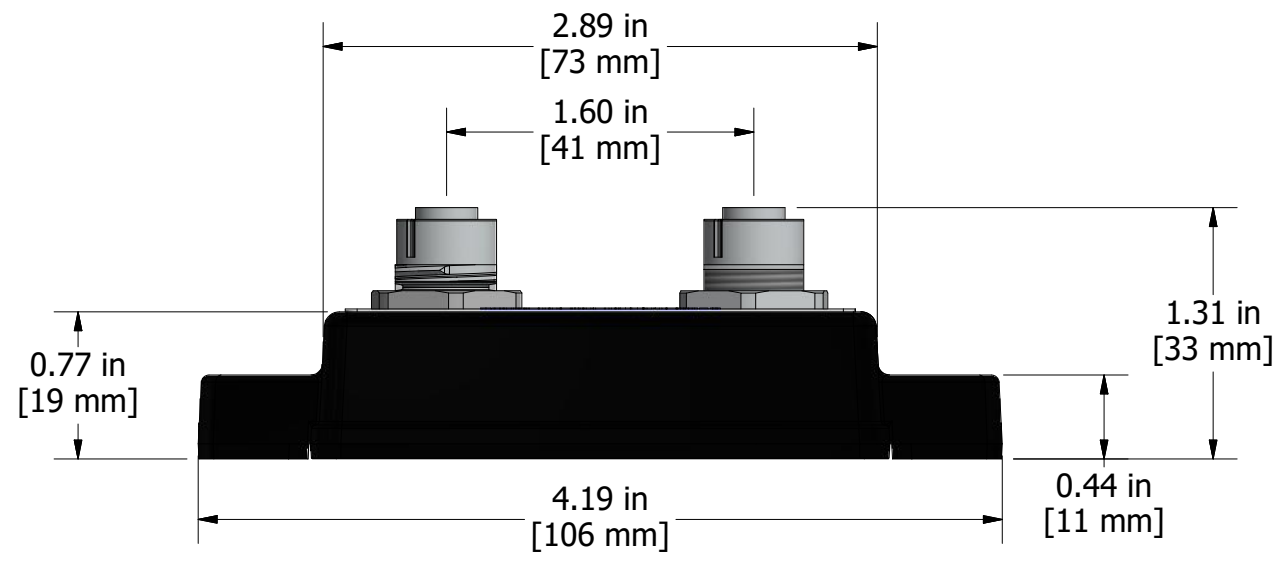
REVISION HISTORY			
REV	DESCRIPTION	DATE	APPROVED
P1-D1	INITIAL RELEASE	2020-07-08	GDV
P1-D2	OVERLAY CHANGED	2020-08-25	GDV
P2-D3	PCB UPDATED AND 8 PIN MALE CONNECTOR CHANGED	2020-10-27	GDV

B



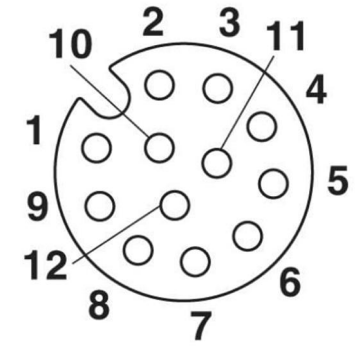
B

A



Unit Label

M12 12 PIN FEMALE CONNECTOR			
PIN	FUNCTION	PIN	FUNCTION
1	RS422_RX+	7	CAN_H
2	RS422_TX+	8	RS232_TX1
3	RS422_RX-	9	RS232_RX1
4	RS232_TX2	10	RS422_TX-
5	RS232_RX2	11	
6	CAN_L	12	



M12 8 PIN FEMALE CONNECTOR			
PIN	FUNCTION	PIN	FUNCTION
1	PWR+	5	ETH_RX+
2	PWR-	6	ETH_TX+
3	PWR-	7	PWR+
4	ETH_TX-	8	ETH_RX-



<small>PROPRIETARY</small> THE INFORMATION CONTAINED IN THIS DRAWING IS CONFIDENTIAL AND PROPRIETARY AND REMAINS THE EXCLUSIVE PROPERTY OF AXIOMATIC TECHNOLOGIES CORPORATION. THIS DRAWING MAY NOT BE USED, REPRODUCED IN WHOLE OR IN PART, NOR REVEALED TO OTHERS WITHOUT THE PRIOR WRITTEN CONSENT OF AXIOMATIC TECHNOLOGIES CORPORATION. BY ACCEPTANCE OF THIS DRAWING, THE BEARER AGREES TO THESE CONDITIONS.				<small>AXIOMATIC TECHNOLOGIES CORPORATION 5915 WALLACE ST. MISSISSAUGA, ON CANADA L4Z 1Z8 905-602-9270</small>			
MATERIAL NA	EL	DATE 2020-10-27	TITLE Protocol Converter-2 RS232, RS422, CAN, 1 ENET				
FINISH NA	CHECKED	DATE	DWG REV D3	DWG NO AX142100-MD	PART REV P2		
THIRD ANGLE PROJECTION	TOOL INVENTOR SIZE B	APPROVED	DATE	SCALE 1	PART NO AX142100		
				SHEET 1 of 1			

4

3

2

1

A