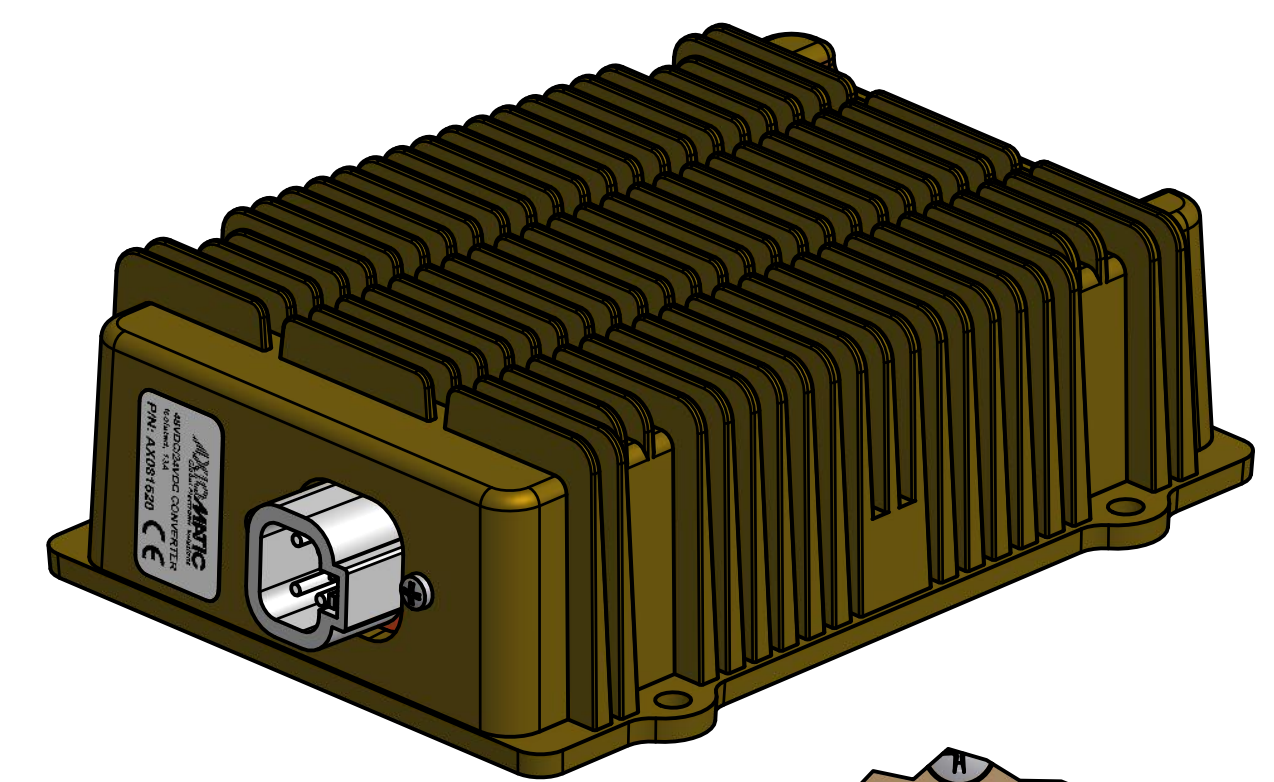
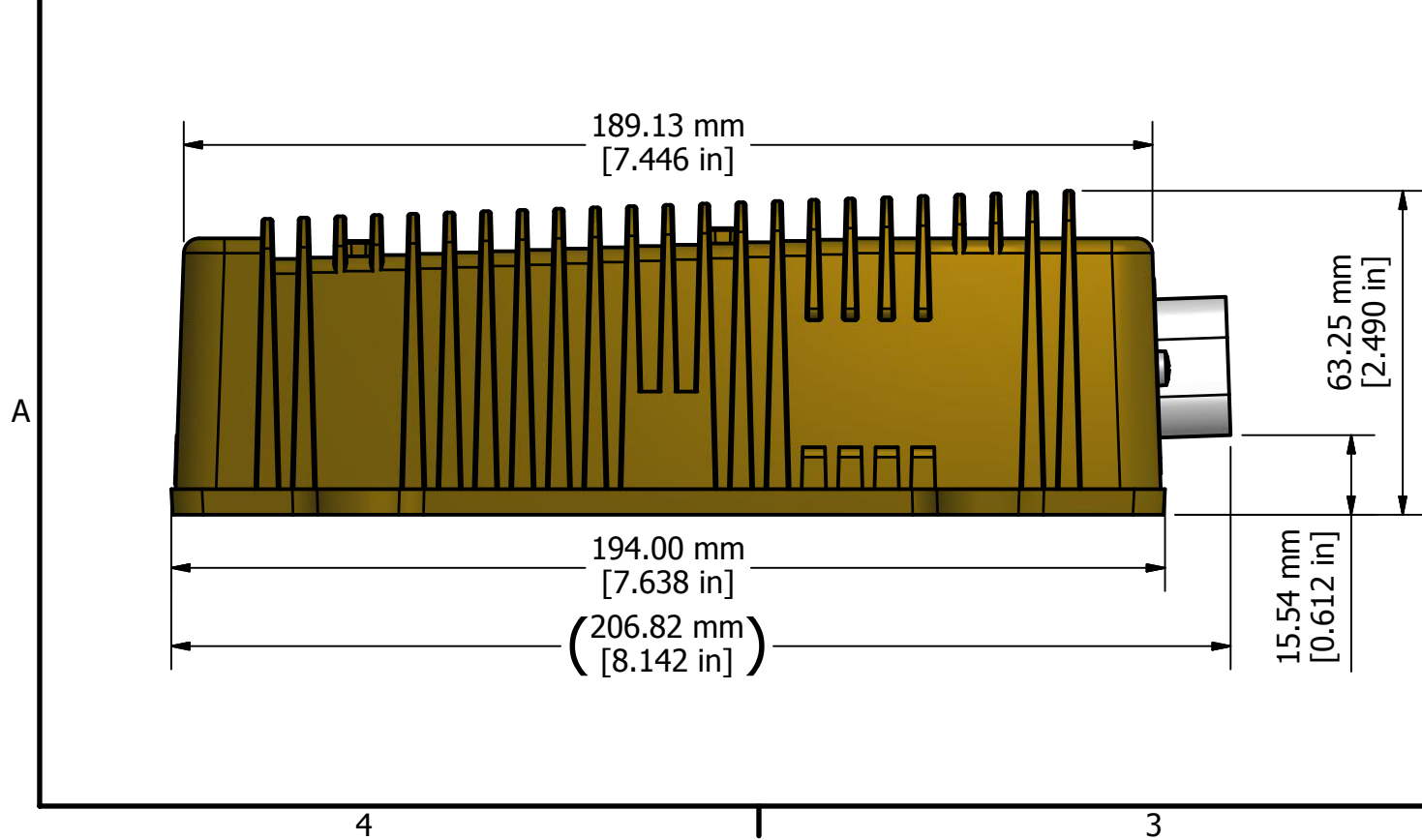
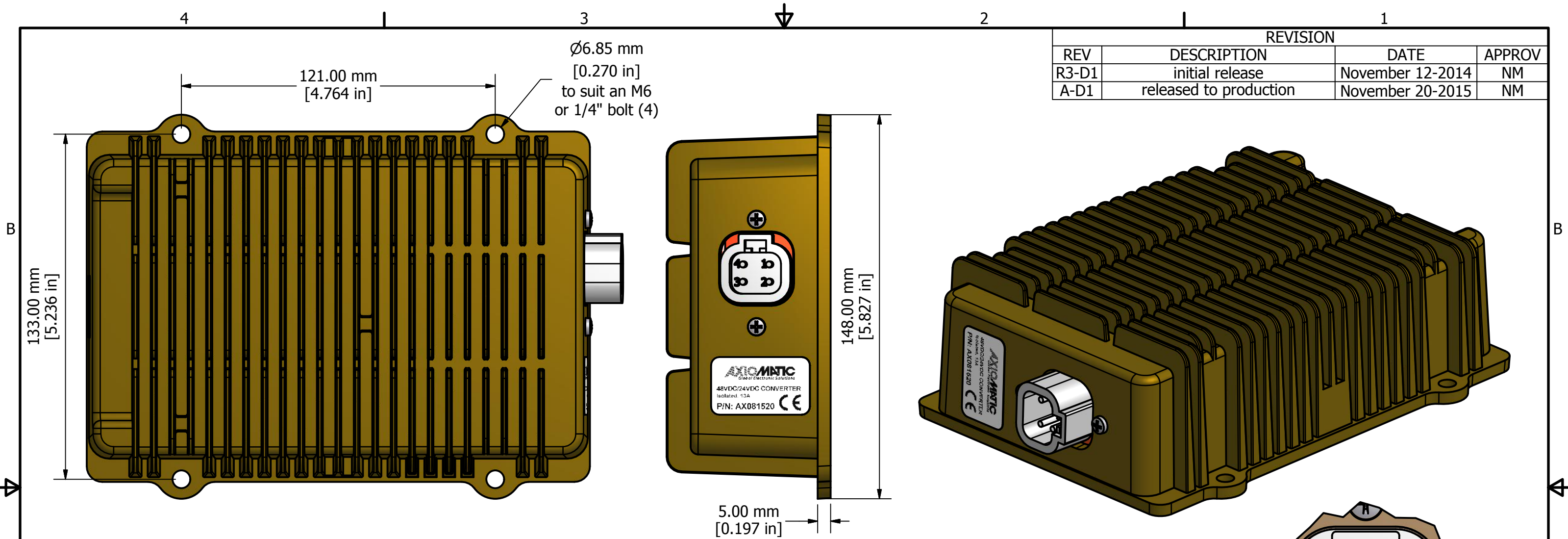
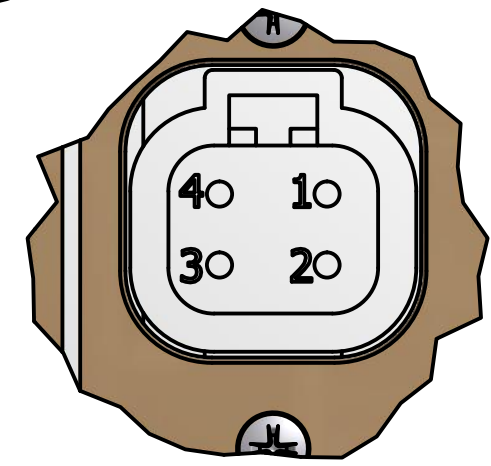


REVISION			
REV	DESCRIPTION	DATE	APPROV
R3-D1	initial release	November 12-2014	NM
A-D1	released to production	November 20-2015	NM



**unit label**



**DETAIL A  
connector pinout**

TOLERANCES			
fabrication		machining	
X.XXX	+/- 0.015	X.XXX	+/- 0.005
X.XX	+/- 0.031	X.XX	+/- 0.010
X.X	+/- 0.031	X.X	+/- 0.015
fractional	+/- 0.031	fractional	+/- 0.031

<small>PROPRIETARY</small> <small>THE INFORMATION CONTAINED IN THIS DRAWING IS CONFIDENTIAL AND PROPRIETARY AND REMAINS THE EXCLUSIVE PROPERTY OF AXIOMATIC TECHNOLOGIES CORPORATION. THIS DRAWING MAY NOT BE USED, REPRODUCED IN WHOLE OR IN PART, NOR REVEALED TO OTHERS WITHOUT THE PRIOR WRITTEN CONSENT OF AXIOMATIC TECHNOLOGIES CORPORATION. BY ACCEPTANCE OF THIS DRAWING, THE BEARER AGREES TO THESE CONDITIONS.</small>				<small>AXIOMATIC TECHNOLOGIES CORPORATION</small> <small>5915 WALLACE ST.</small> <small>MISSISSAUGA, ON</small> <small>CANADA L4Z1Z8</small> <small>905-602-9270</small>	
MATERIAL	die cast aluminum chassis	DRAWN	TF	DATE	11/12/2014
FINISH	hard anodized	CHECKED		DATE	
APPROVED		DATE		TITLE	48-24-13A isolated power supply
		DWG REV	D1	DWG NO	AX081520-MD-A
		PART NO	AX081520	PART REV	A
		SCALE	full	SHEET	1 of 1