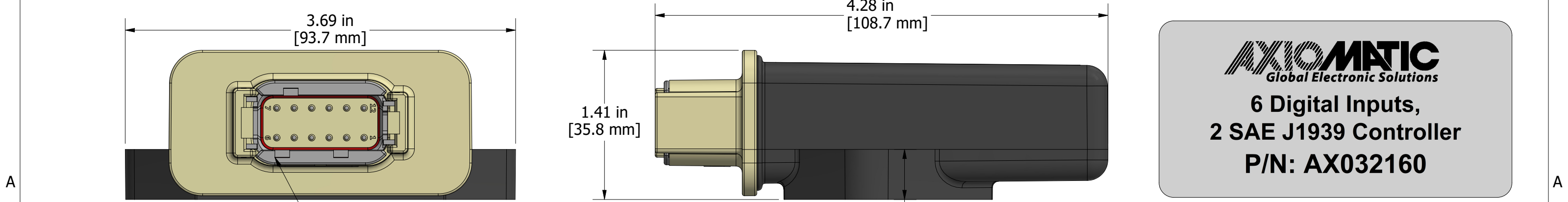
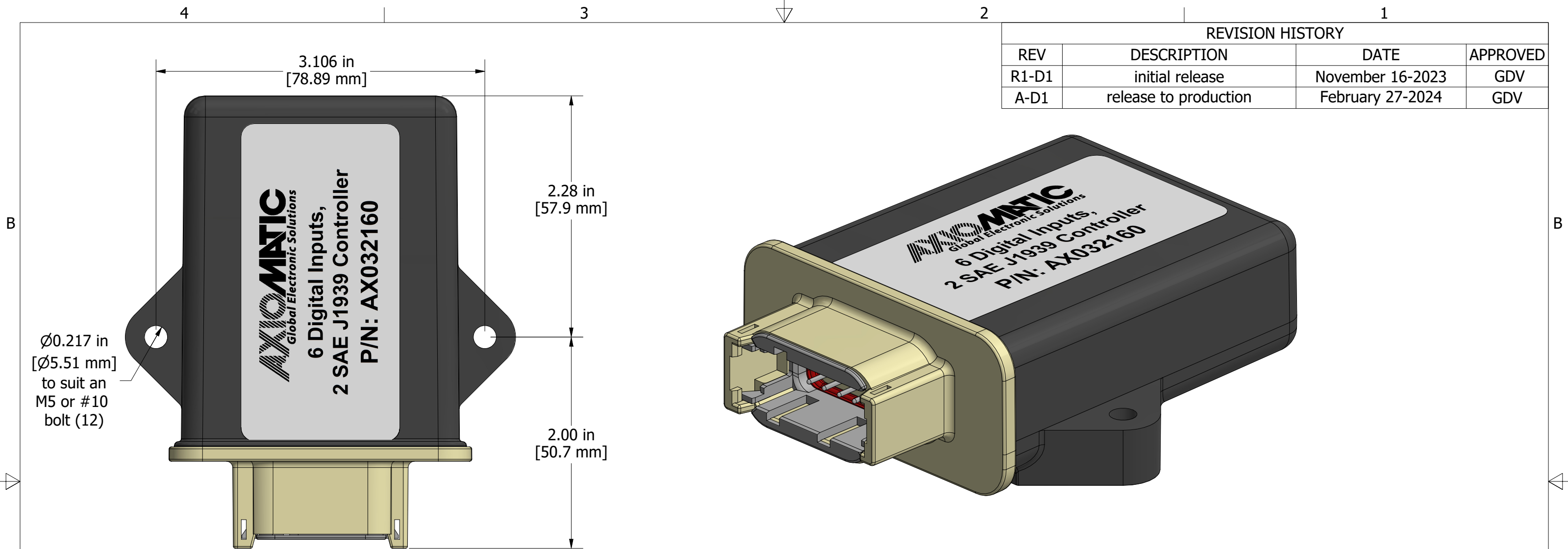


REVISION HISTORY			
REV	DESCRIPTION	DATE	APPROVED
R1-D1	initial release	November 16-2023	GDV
A-D1	release to production	February 27-2024	GDV



**unit label**

**molded in TE Deutch  
DTM04-12PA  
mates with  
DTM06-12SA  
all modifications**

<small>PROPRIETARY</small> THE INFORMATION CONTAINED IN THIS DRAWING IS CONFIDENTIAL AND PROPRIETARY AND REMAINS THE EXCLUSIVE PROPERTY OF AXIOMATIC TECHNOLOGIES CORPORATION. THIS DRAWING MAY NOT BE USED, REPRODUCED IN WHOLE OR IN PART, NOR REVEALED TO OTHERS WITHOUT THE PRIOR WRITTEN CONSENT OF AXIOMATIC TECHNOLOGIES CORPORATION. BY ACCEPTANCE OF THIS DRAWING, THE BEARER AGREES TO THESE CONDITIONS.				<small>AXIOMATIC TECHNOLOGIES CORPORATION</small> 1445 Courtneypark Dr. MISSISSAUGA, ON CANADA L5T2E3 905-602-9270	
<small>DIMENSIONS ARE IN mm UNLESS OTHERWISE SPECIFIED IN DRAWING TOLERANCE ON:</small> X.X ± 0.5 X. ± 1 ANGLES ± 1.0		<small>MATERIAL</small> PA66 30% glass fill UL94HB	<small>DRAWN</small> TF	<small>DATE</small> 2024-02-16	<small>TITLE</small> Six digital inputs, dual CAN, J1939
<small>FINISH</small> NA		<small>CHECKED</small> TF	<small>DATE</small> 	<small>DWG REV</small> D1	<small>DWG NO</small> AX032160-MD
<small>THIRD ANGLE PROJECTION</small> 		<small>TOOL</small> 	<small>APPROVED</small> GDV	<small>SCALE</small> 1.375	<small>PART NO</small> FG-AX032160
<small>INVENTOR</small> SIZE B		<small>DATE</small> 	<small>SHEET</small> 1 of 1		