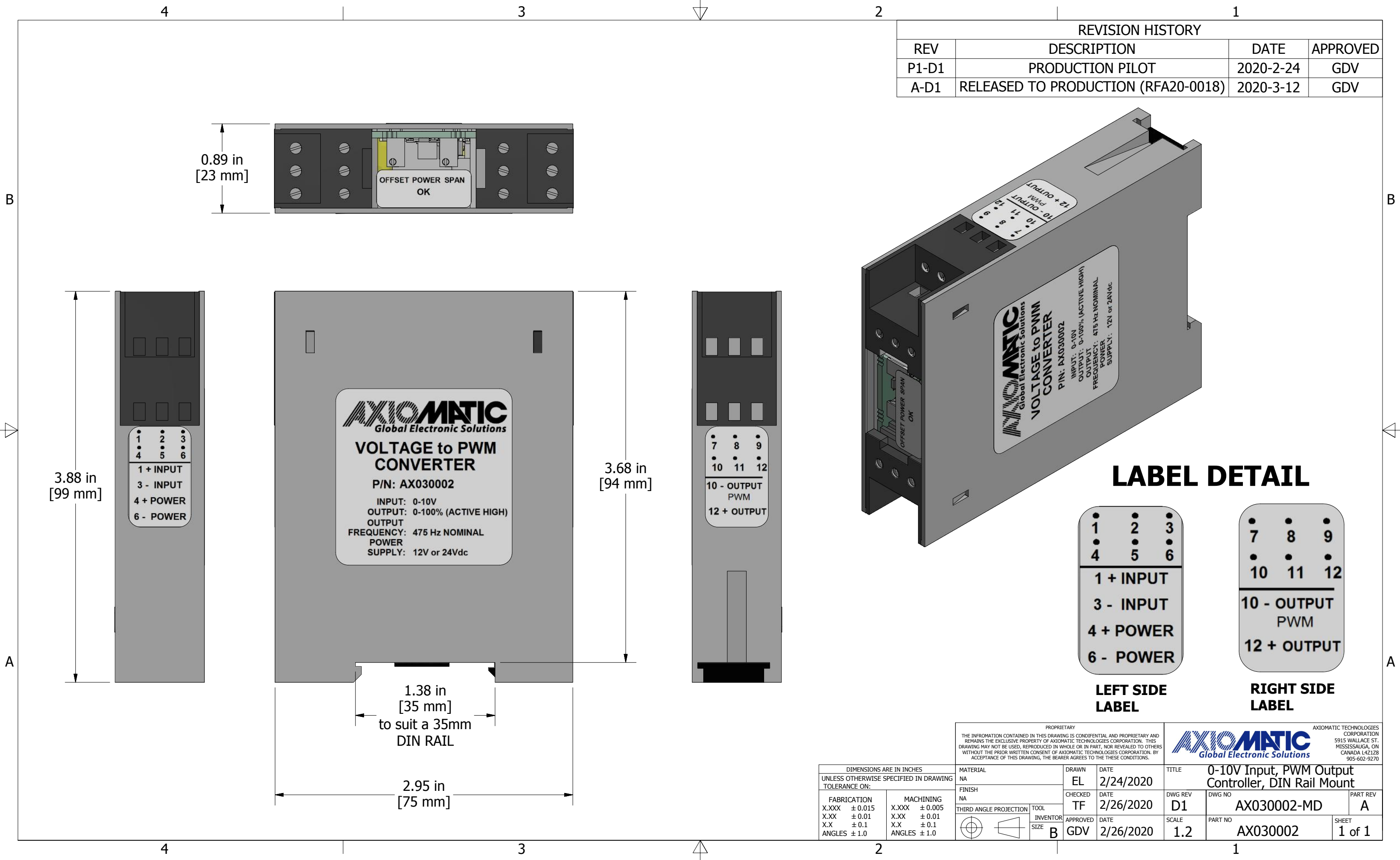
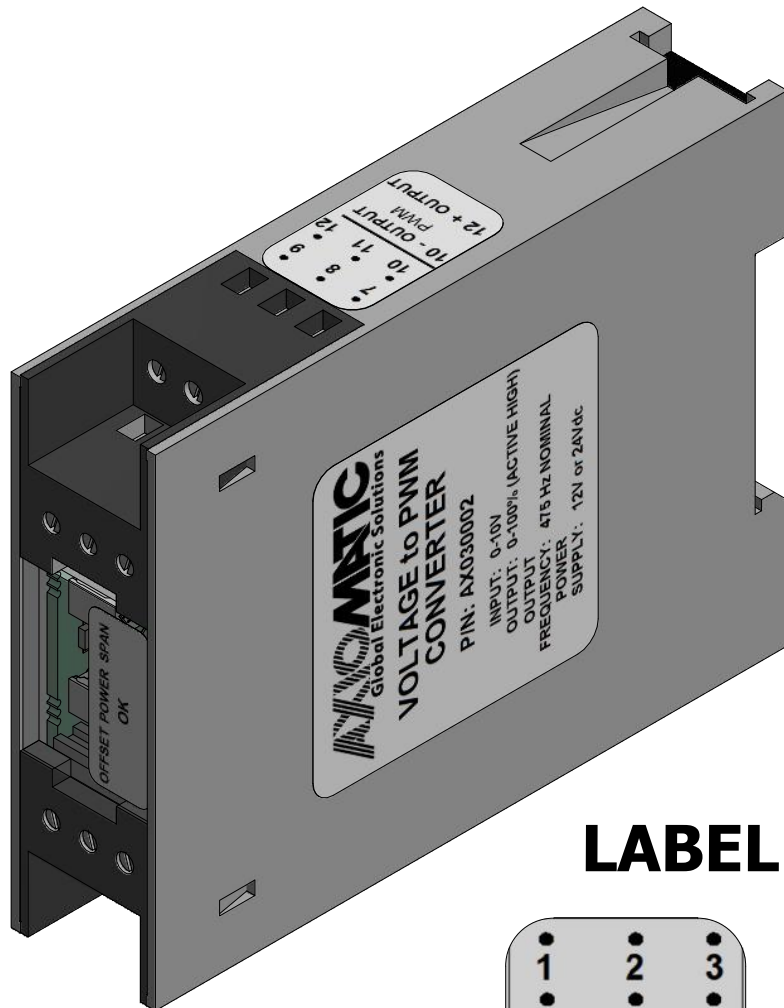
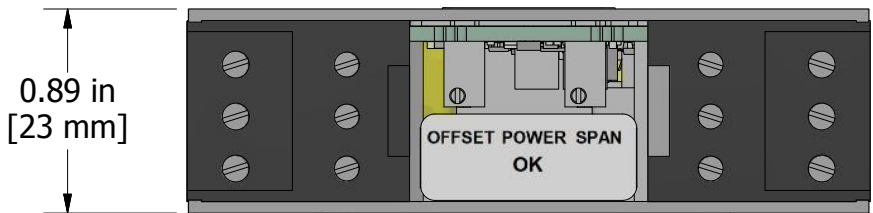


REVISION HISTORY			
REV	DESCRIPTION	DATE	APPROVED
P1-D1	PRODUCTION PILOT	2020-2-24	GDV
A-D1	RELEASED TO PRODUCTION (RFA20-0018)	2020-3-12	GDV



AXIOMATIC
Global Electronic Solutions

VOLTAGE to PWM CONVERTER

P/N: AX030002

INPUT: 0-10V
OUTPUT: 0-100% (ACTIVE HIGH)
OUTPUT FREQUENCY: 475 Hz NOMINAL
POWER SUPPLY: 12V or 24Vdc

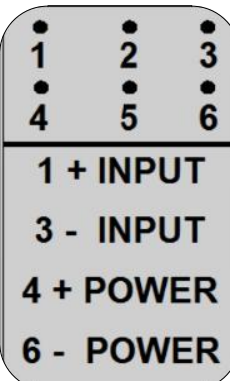
AXIOMATIC
Global Electronic Solutions

VOLTAGE to PWM CONVERTER

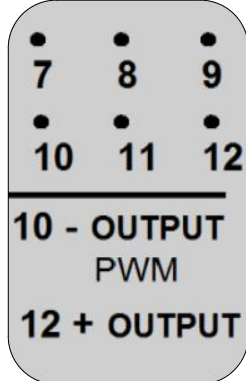
P/N: AX030002

INPUT: 0-10V
OUTPUT: 0-100% (ACTIVE HIGH)
OUTPUT FREQUENCY: 475 Hz NOMINAL
POWER SUPPLY: 12V or 24Vdc

LABEL DETAIL



LEFT SIDE LABEL



RIGHT SIDE LABEL

<small>PROPRIETARY</small> THE INFORMATION CONTAINED IN THIS DRAWING IS CONFIDENTIAL AND PROPRIETARY AND REMAINS THE EXCLUSIVE PROPERTY OF AXIOMATIC TECHNOLOGIES CORPORATION. THIS DRAWING MAY NOT BE USED, REPRODUCED IN WHOLE OR IN PART, NOR REVEALED TO OTHERS WITHOUT THE PRIOR WRITTEN CONSENT OF AXIOMATIC TECHNOLOGIES CORPORATION. BY ACCEPTANCE OF THIS DRAWING, THE BEARER AGREES TO THESE CONDITIONS.				<small>AXIOMATIC TECHNOLOGIES CORPORATION</small> 5915 WALLACE ST. MISSISSAUGA, ON CANADA L4Z 1Z8 905-602-9270	
<small>DIMENSIONS ARE IN INCHES</small> UNLESS OTHERWISE SPECIFIED IN DRAWING TOLERANCE ON:		MATERIAL NA	DRAWN EL	DATE 2/24/2020	TITLE 0-10V Input, PWM Output Controller, DIN Rail Mount
FABRICATION X.XXX ± 0.015 X.XX ± 0.01 X.X ± 0.1 ANGLES ± 1.0	MACHINING X.XXX ± 0.005 X.XX ± 0.01 X.X ± 0.1 ANGLES ± 1.0	FINISH NA	CHECKED TF	DATE 2/26/2020	DWG REV D1
<small>THIRD ANGLE PROJECTION</small>		TOOL INVENTOR SIZE B	APPROVED GDV	DATE 2/26/2020	SCALE 1.2
		DWG NO AX030002-MD		PART REV A	
		PART NO AX030002		SHEET 1 of 1	