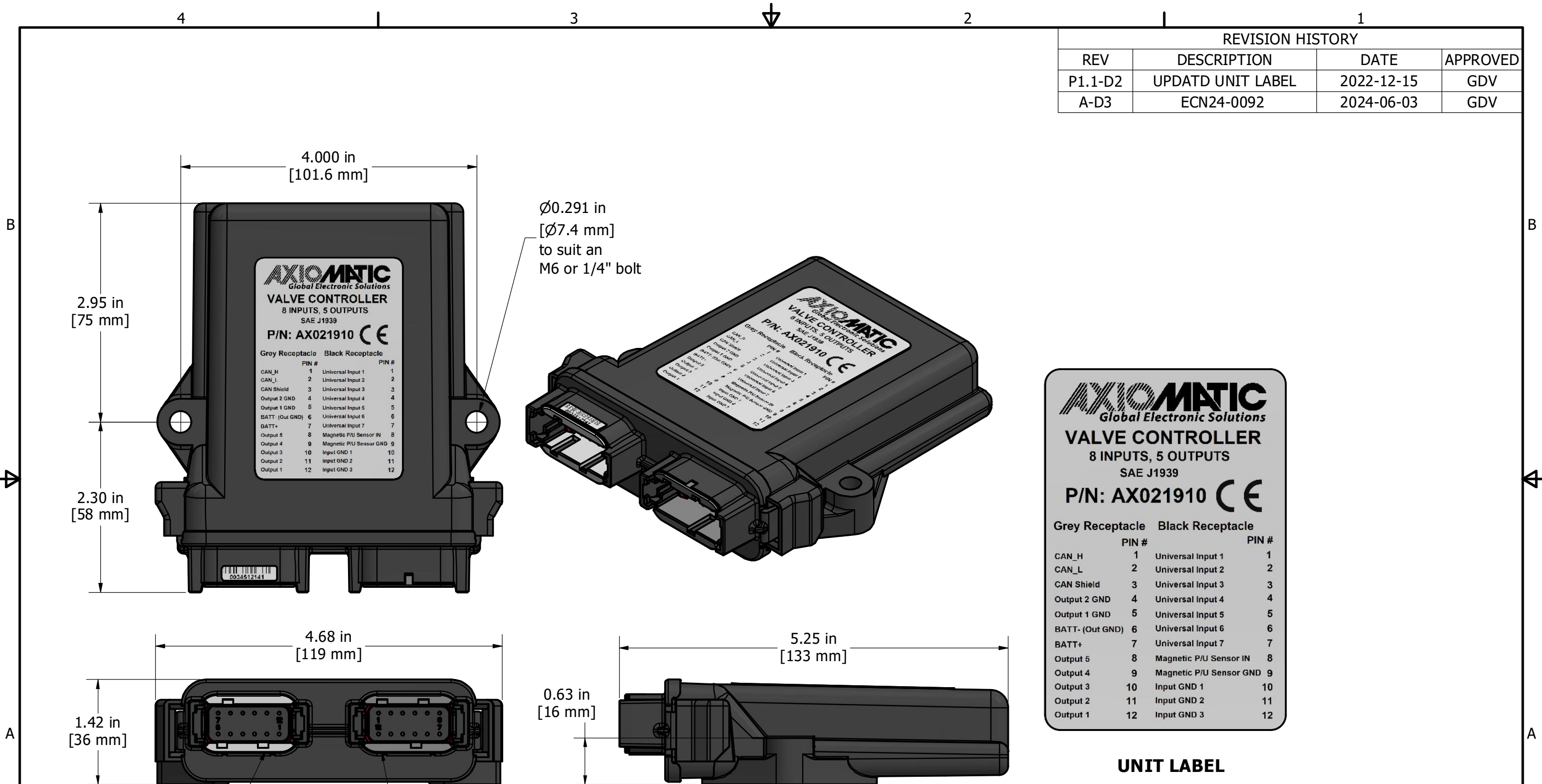


REVISION HISTORY			
REV	DESCRIPTION	DATE	APPROVED
P1.1-D2	UPDATD UNIT LABEL	2022-12-15	GDV
A-D3	ECN24-0092	2024-06-03	GDV



Ø0.291 in
[Ø7.4 mm]
to suit an
M6 or 1/4" bolt

Gray receptacle keyed "A"
mates with DTM06-12SA

Black receptacle keyed "B"
mates with DTM06-12SB

UNIT LABEL

PROPRIETARY THE INFORMATION CONTAINED IN THIS DRAWING IS CONFIDENTIAL AND PROPRIETARY AND REMAINS THE EXCLUSIVE PROPERTY OF AXIOMATIC TECHNOLOGIES CORPORATION. THIS DRAWING MAY NOT BE USED, REPRODUCED IN WHOLE OR IN PART, NOR REVEALED TO OTHERS WITHOUT THE PRIOR WRITTEN CONSENT OF AXIOMATIC TECHNOLOGIES CORPORATION. BY ACCEPTANCE OF THIS DRAWING, THE BEARER AGREES TO THESE CONDITIONS.				AXIOMATIC TECHNOLOGIES CORPORATION 5915 WALLACE ST. MISSISSAUGA, ON CANADA L4Z 1Z8 905-602-9270	
DIMENSIONS ARE IN mm UNLESS OTHERWISE SPECIFIED IN DRAWING TOLERANCE ON:		MATERIAL: NA FINISH: NA THIRD ANGLE PROJECTION:		TITLE: VALVE CONTROLLER 8 INPUT 5 OUTPUT	
X.XXX [.XX] ± 0.008 [0.20] X.XX [X.X] ± 0.02 [0.51] (X.XX [X.X]) ± 0.04 [1.00] ANGLES ± 1.0° Others follow ISO 2768-2, tolerance class K		DRAWN: AZ DATE: 2022-06-06 CHECKED: TF DATE: 2022-06-08 APPROVED: GDV DATE: 2022-06-08		DWG REV: D3 DWG NO: AX021910-MD PART NO: AX021910 SCALE: 0.8 SHEET: 1 of 1	